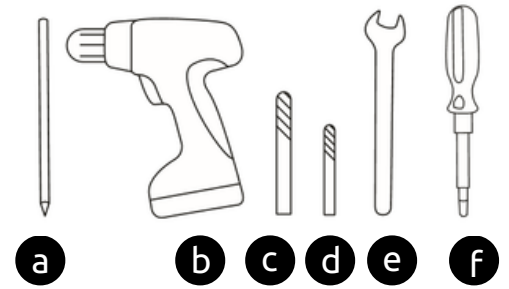


# Tab-Secure - Flex Assembly Instructions

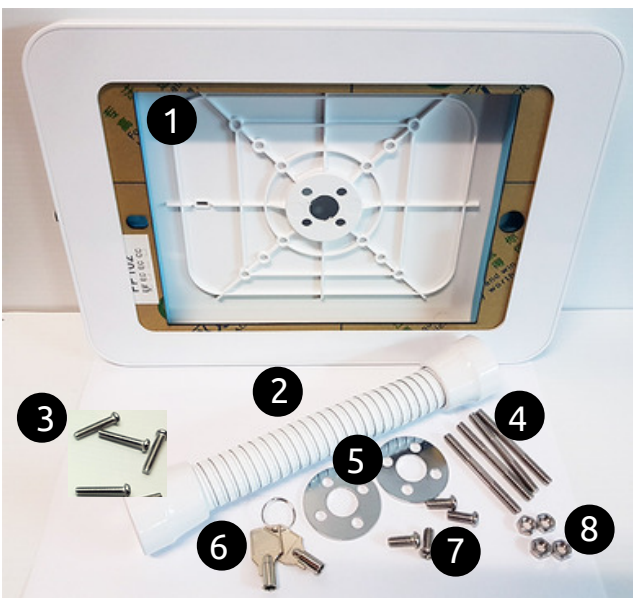


Tools you will need:



Tool key:

- a** Pencil
- b** Drill
- c** 16mm Drill Bit
- d** 6.5mm Drill Bit
- e** Spanner
- f** Phillips Screwdriver



Components key:

- 1** Tablet Case
- 2** Flex Stalk
- 3** M5 x 25mm Buttonhead Screw x4
- 4** M5 x 50mm Threaded Rod x4
- 5** Washer Plate x2
- 6** Keys
- 7** M5 Countersunk Screw x 4
- 8** M5 Hex Nut x4

# 1

**Drill the mounting holes into your surface using the washer plate as a template.**

Tip: Use a smaller drill bit to drill a pilot hole.



- 2** Attach the rotating base component to the stalk using the button head screws.



- 3** Attach the threaded rod to the bottom of the rotating base.

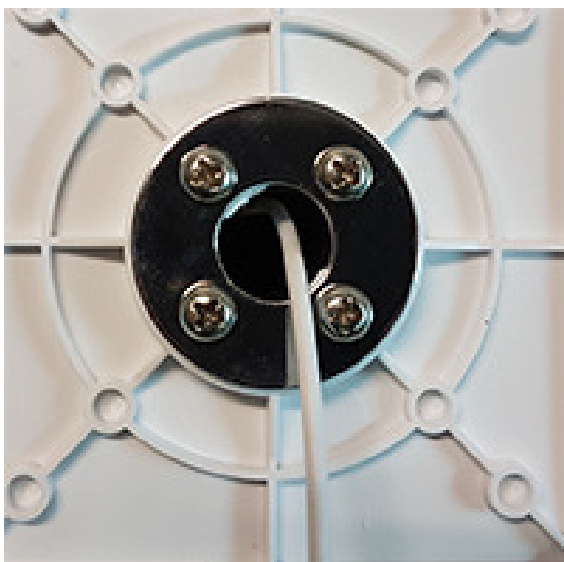
- 4** Thread the power cable through through the stalk.



- 5** Attach the stalk to your surface.



- 6** Place the washers and nuts onto the threaded rod and tighten.



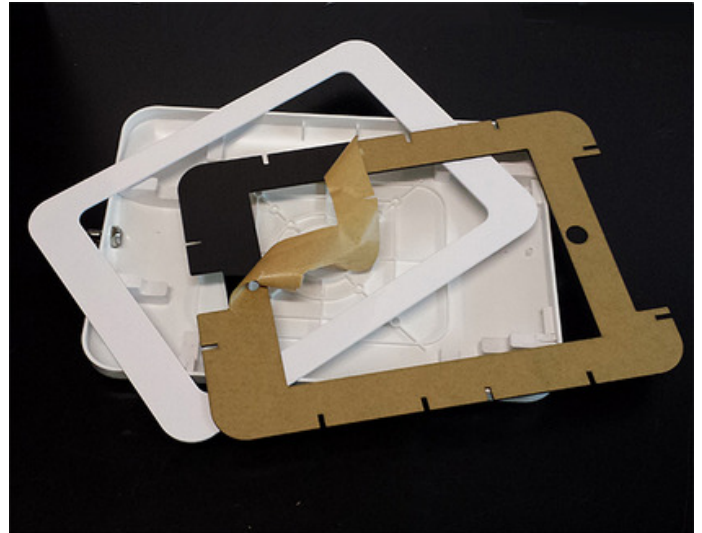
- 7** Attach the tablet case to the stalk using the steel washer and nuts.



- 8** Place the iPad in the holder and plug the power cable in.



- 9** Remove the protective brown paper from the faceplate.



- 10** Place the faceplate on top of the iPad.

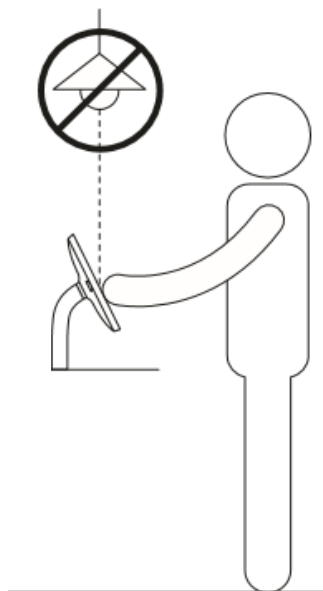


- 11** Cover with the metal faceplate and push the button on the key barrel to lock the unit.



#### Installation Guidelines:

To minimise the glare on the screen, avoid installing the iPad directly below a source of light.



#### Maintenance of your iPad kiosk:

To keep the display looking its best, clean regularly with screen wipes.