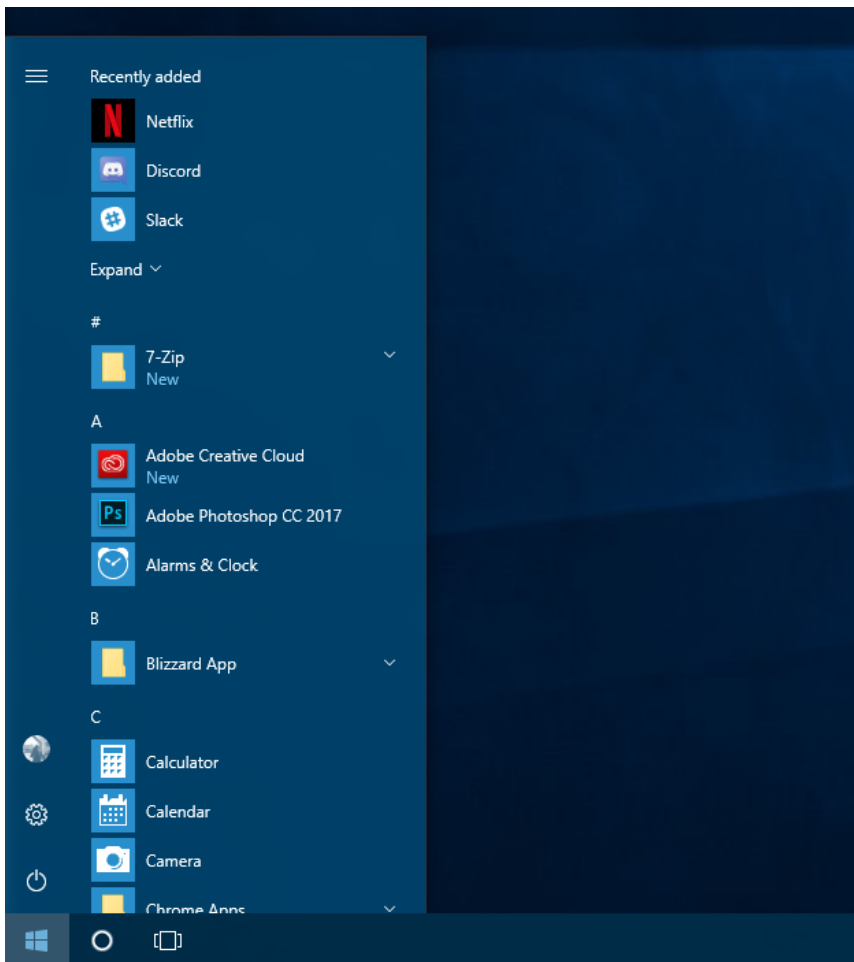


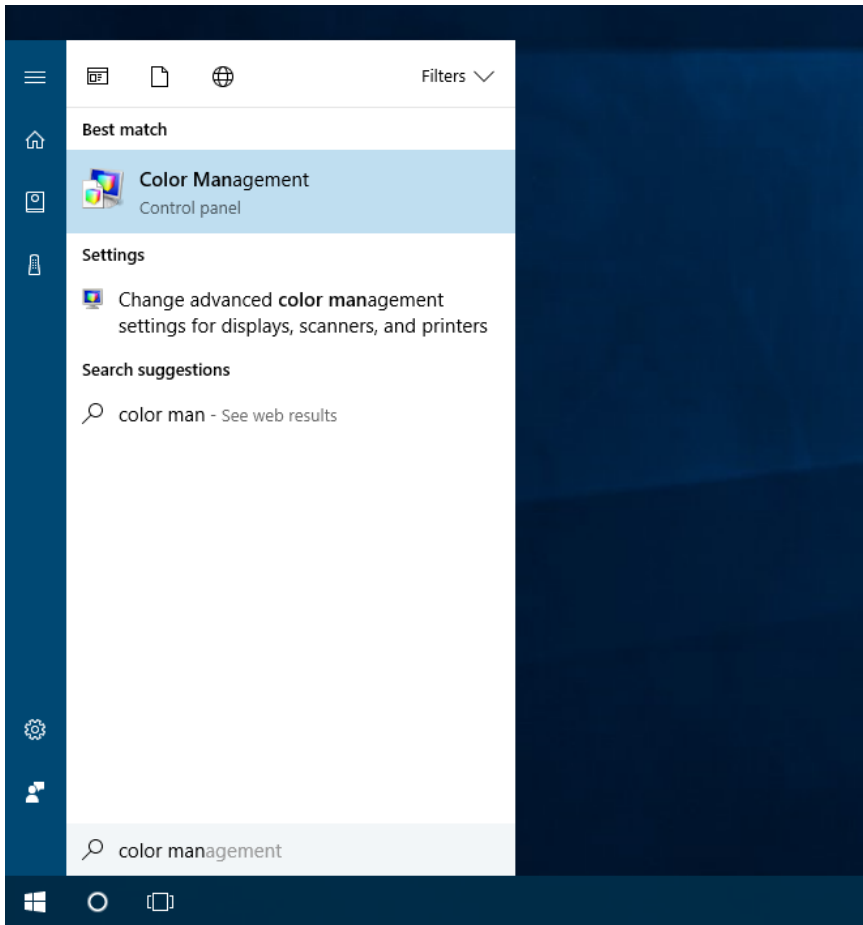
PRISM+

ICC Profile Instructions

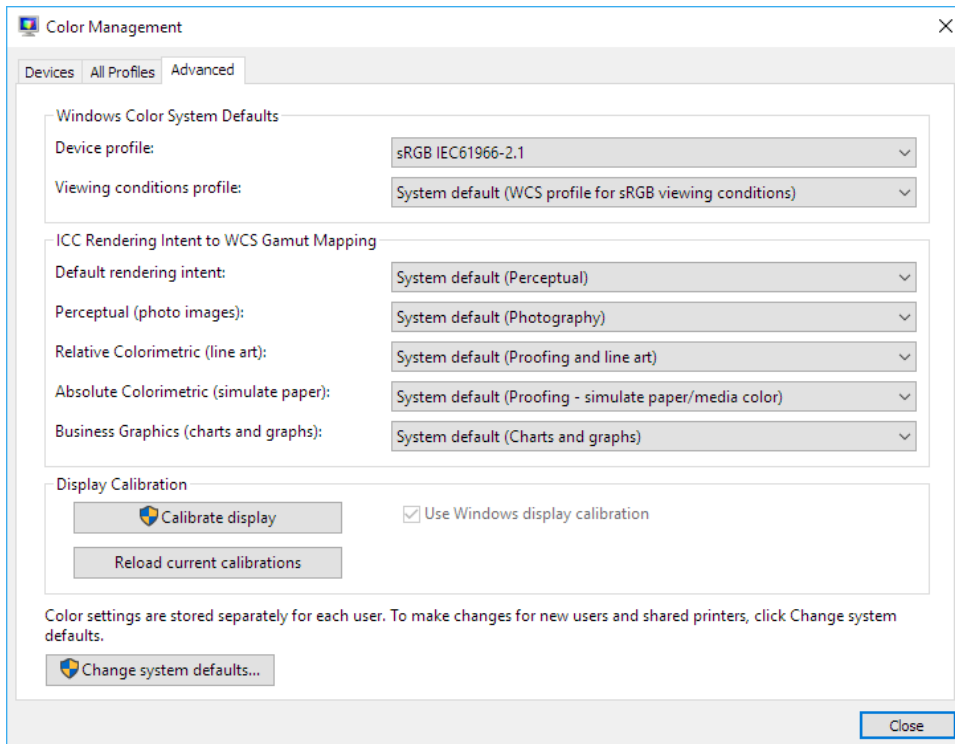
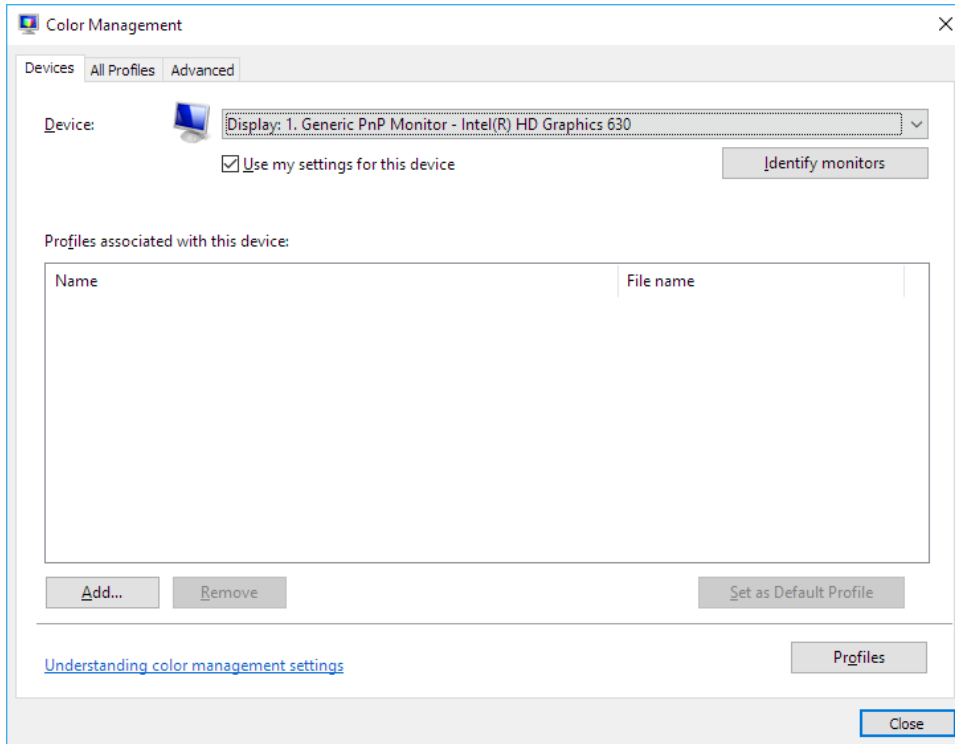
1. Ensure the monitor is set to its Default Factory Settings (perform a Reset of the monitor if unsure.)
2. Bring up the Start Menu by pressing the Windows Key or clicking on the Windows icon on the bottom right of the screen



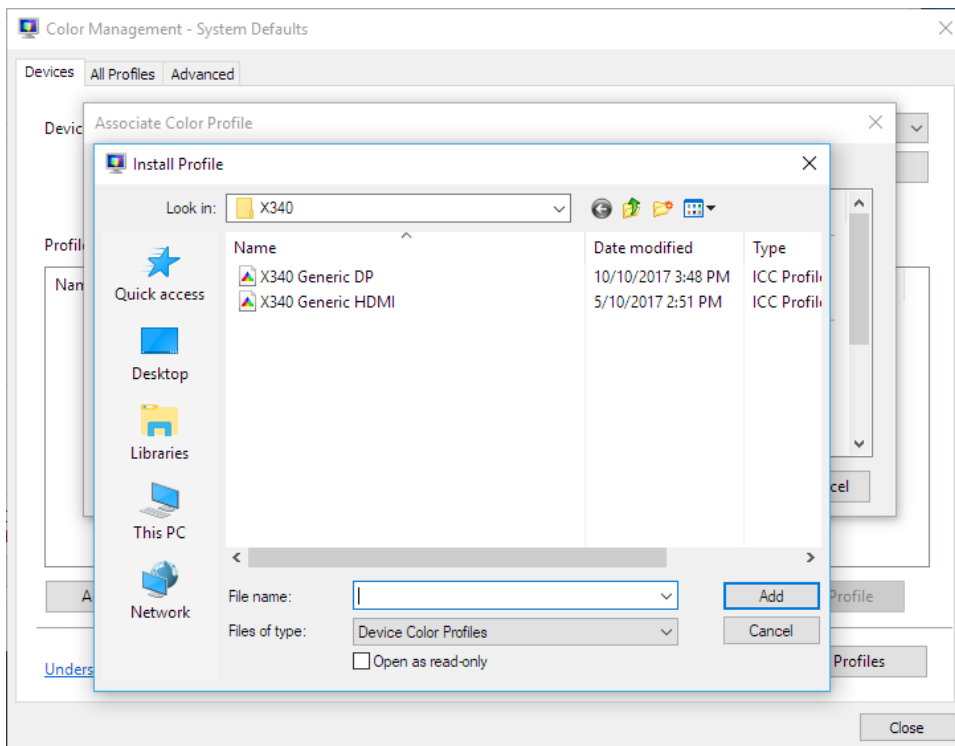
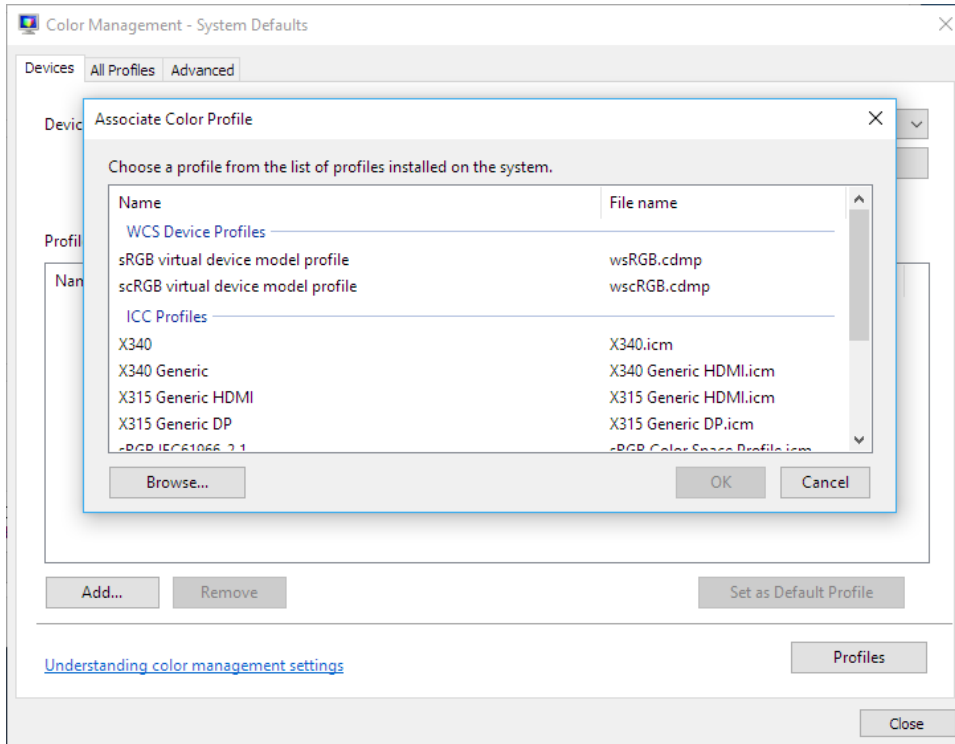
3. Type "Color Management" to find the Color Management Control Panel Item and select it.



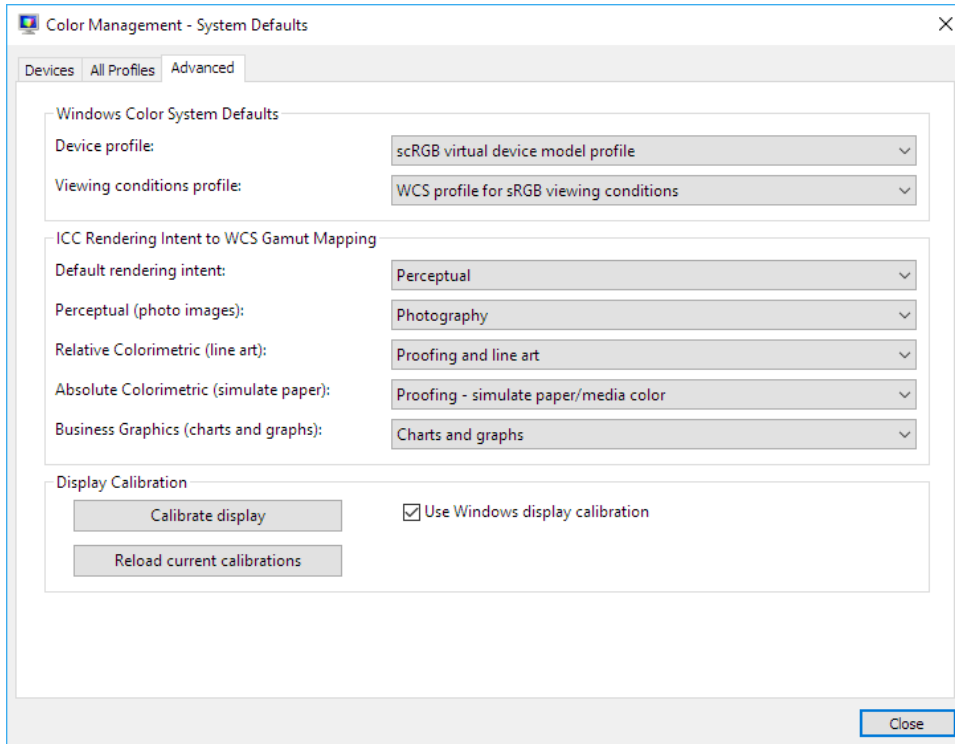
4. Click On the Advanced Tab and Select the "Change System Default" option



5. Select "Add", followed by "Browse" and select the included ICC Profile File for the respective input (HDMI/DP etc)



6. Next Select the Advanced tab and ensure the option of windows display calibration is selected/ticked.



7. The ICC Profile is now successfully configured! 😊

Items to Note

- The ICC Profile is Calibrated to a color temperature of 6500K and a Gamma of 2.2
- The ICC Profile might not work as intended when using Full Screen Applications (Games etc.)
- The ICC Profile Might not reload upon exiting full screen applications (Games etc)
 - This is normal behavior due to how Windows Handle ICC Profiles. To reload the profile, you'll have to go into Color Management and click "Reload Current Calibrations". If that does not work, You can try unticking and reticking the "Use Windows display calibration" option
- The ICC Profile provided is not guaranteed to be completely accurate for your monitor due to panel variance. If you do wish for a calibration of your screen, the screen can be brought down to our showroom for us to do a calibration for your Display.
 - It is strongly advised to bring both the display and the computer used to run the display to ensure the best results.