

# Turonic PH950

Air Purifier + Humidifier



## **WI-FI GUIDE**

Please read this manual before connecting the product to Wi-Fi

## WI-FI CONTROL

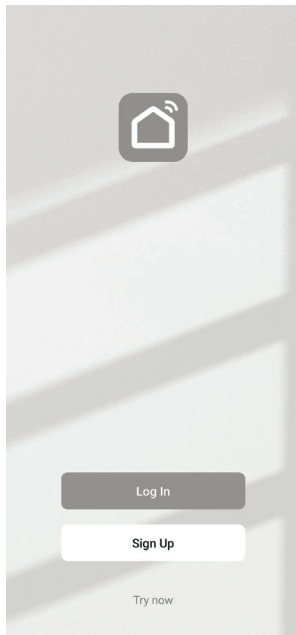
The **PH950** purifier is equipped with the Wi-Fi feature compatible with almost all popular Smart Home Kits (Google, etc.).

To start using it:

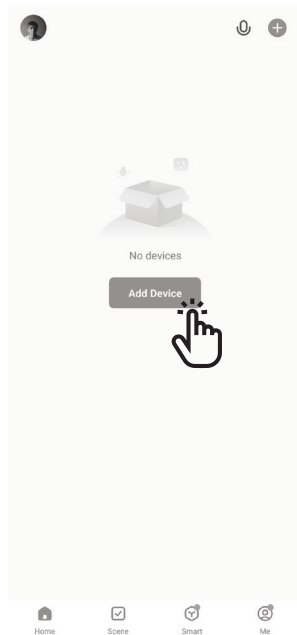
1. Download the Smart Life app using the following QR code (available for Android and iOS) and open it:



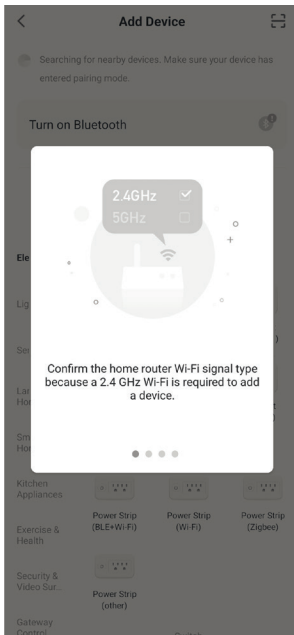
**2. Log in or Sign up to use all the features of this app:**



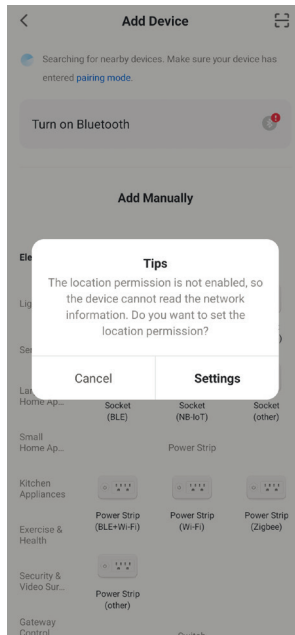
**3. On the Home tab, tap on Add Device:**



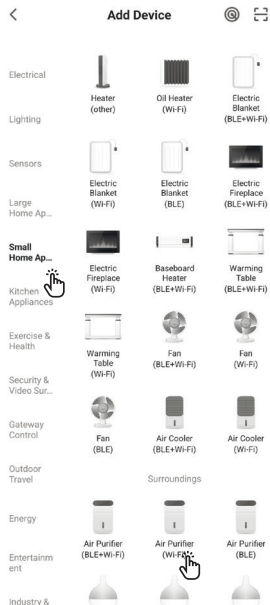
#### 4. Read the tips through (if any):



#### 5. Give all the required permissions to the app:



**6.** In the list on the left, select **Small Home Appliances**, and in the list on the right, select **Air Purifier (Wi-Fi)**:

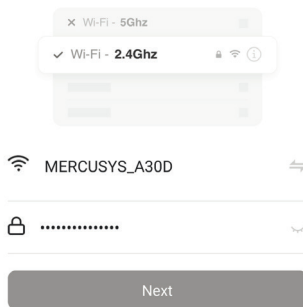


**7.** In the next screen, select the Wi-Fi network you want to connect the purifier in and enter the password to this network.

Please note that the purifier supports only 2.4GHz Wi-Fi networks, it will not connect to the app if 5GHz network is used:

**Select 2.4 GHz Wi-Fi Network and enter password.**

If your Wi-Fi is 5GHz, please set it to be 2.4GHz.  
Common router setting method



**8.** After that, from the Standby state, press and hold the IONIZER button on the purifier's control panel until you hear the sound prompt and the WiFi LED starts flashing:



**9.** In the app, confirm that you entered the Wi-Fi pairing mode on the purifier and, in the popped up window, select Blink Quickly:

#### Reset the device



Press and hold the RESET button for 5 seconds until the indicator blinks (subject to the user manual).

#### Reset the device



Press and hold the RESET button for 5 seconds until the indicator blinks (subject to the user manual).

Confirm the indicator is blinking rapidly.



Reset Device Step by Step

Select the status of the indicator light or hear the beep:

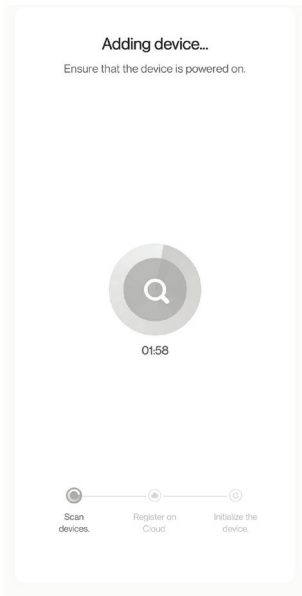
Blink Slowly



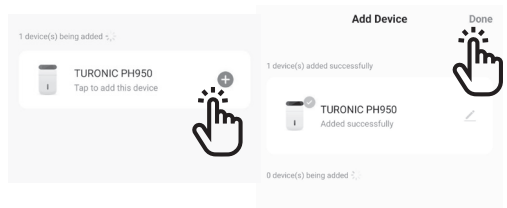
Blink Quickly



**10.** Wait until the app finds the **TURONIC PH950** purifier:



**11.** Press the + button and then Done:



**Note:** Once connected, you will be able to control the **PH950** purifier using not only Wi-Fi, but also 4G/5G networks.

