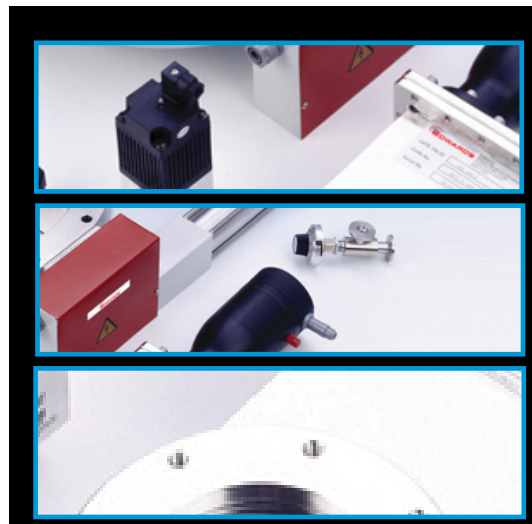


ELECTROPNEUMATIC CONTROL VALVES



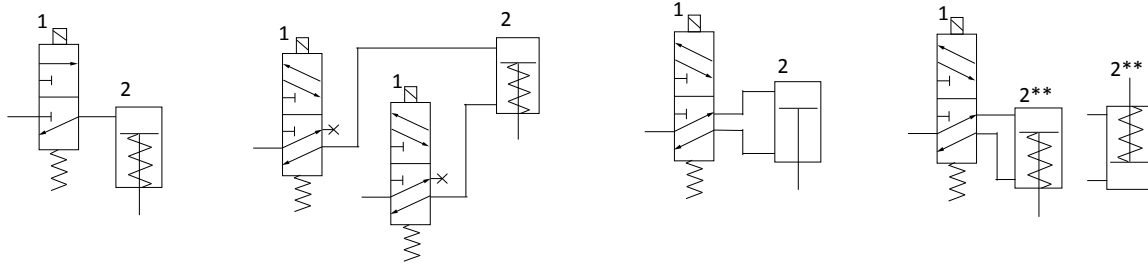
Electropneumatic control valves can be used to control the operation of pneumatically activated vacuum valves. Control valves are available with different electrical supply voltages and frequencies to suit your application.

Features and benefits

- Compatible with Edwards Pneumatic vacuum valves.



Electropneumatic Control Valve Dimensions



- 1 Pneumatic circuit for 3-port control valve
- 2 Pneumatic circuit for two 5-port lightweight control valves
- 3 Pneumatic circuit 5-port lightweight control valve
- 4 Pneumatic circuit for 5-port control valve

Technical Data

Valve	Valve Type	Recommend Control Valve Configuration	Schematic
GV gate valves	Double-acting cylinder with no spring return	1 x 5-port	3
PVPK pipeline valves soft start	Single-acting cylinder with spring return	1 x 3-port	1
BRV backing/ roughing valve	Double-acting cylinder with spring return to the mid-position (that is, isolated position)	2 x 5-port or (1 x 5-port)	2*(4†)
QSB63/100/160 quarter swing butterfly valves, Diffstak isolation-valves	Double-acting cylinder with no spring return	1 x 5-port	4
Supply pressure	3-port	5-port	
Bar gauge	2.1-8	3.4-4.8	
Psig	30-115	50-70	

* This configuration allows the use of the isolated position of the vacuum valve.

† This configuration only allows the use of the roughing and backing positions of the vacuum valve

Electropneumatic Control Valve

Ordering information



Product description	Order no:
3-Port, 24 V d.c, 1/8 Inch BSP	H06200124
3-Port, 24 V a.c, 50/60 Hz, 1/8 Inch BSP	H06200125
3-Port, 110 V a.c, 50/60 Hz, 1/8 Inch BSP	H06200126
3-Port, 230 V a.c, 50/60 Hz, 1/8 Inch BSP	H06200138
5-Port, 24 V d.c, 6 mm BSP	B28703055
5-Port, 24 V a.c, 50/60 Hz, 6 mm BSP	B28703030
5-Port, 110 V a.c, 50/60 Hz, 6 mm BSP	B28703031
5-Port, 230 V a.c, 50/60 Hz, 6 mm BSP	B28703032