

AV5A AIR ADMITTANCE VALVE WITH COUPLINGS



The AV5A is manufactured in aluminium alloy. It has a control knob attached to a screw-actuated plunger: turn the control knob clockwise to close the valve. A nitrile 'O' ring seals the plunger to the valve body.

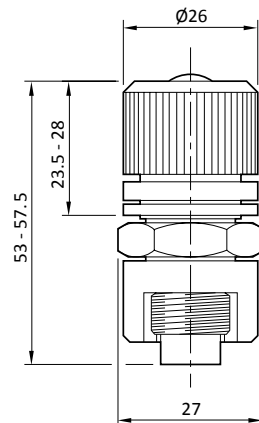
The valve can be connected directly, pipeline supported or panel mounted, and is connected to the vacuum system with the Edwards SC5 coupling (supplied).

Features and benefits

- Simple manual air admit valve.



AV5A Dimension



Technical Data

AV5A	
Materials of construction	
Body	HE30 aluminium/nickel plated brass
Plunger	HE30 aluminium
Seal	Nitrile
Leak rate across seat	10^{-7} mbar ls ⁻¹ / 8×10^{-8} Torr ls ⁻¹
Leak rate through body	10^{-1} mbar ls ⁻¹ / 8×10^{-2} Torr ls ⁻¹
Panel mounting	Ø17 mm/Ø0.66 in hole, 3 mm/0.117 in maximum thickness
Vacuum connections	SC5 couplings or 3/8 inch BSP threaded body and bonded seal
Weight	85 g/3 oz

AV5A

Ordering information

Product description	Order no:
AV5A Air Admittance Valve With Couplings	C35003000



O Ring Nitrile

Product description	Order no:
O Ring Nitrile Vor 2A Pk 10	H02105115

Dowty Seal

Product description	Order no:
Dowty Seal 3/8 BSP MkC	H02104003