

Before using the lamp, please read this manual carefully and keep it for future reference.

## LED SOLAR LIGHTING

### Specifications

- 1) Charging : USB charging cord 5V1A
- 2) Power : LED RGB 0.5W+ White 0.5W ( Built-in , non replaceable )
- 3) Battery : 1800 mAh ( Built-in , non replaceable )
- 4) Working time : 7~8 hours.
- 5) Charging time : Auto solar charge 15 hours,DC charge 5 hours
- 6) Water resistance:IP65

### Warning

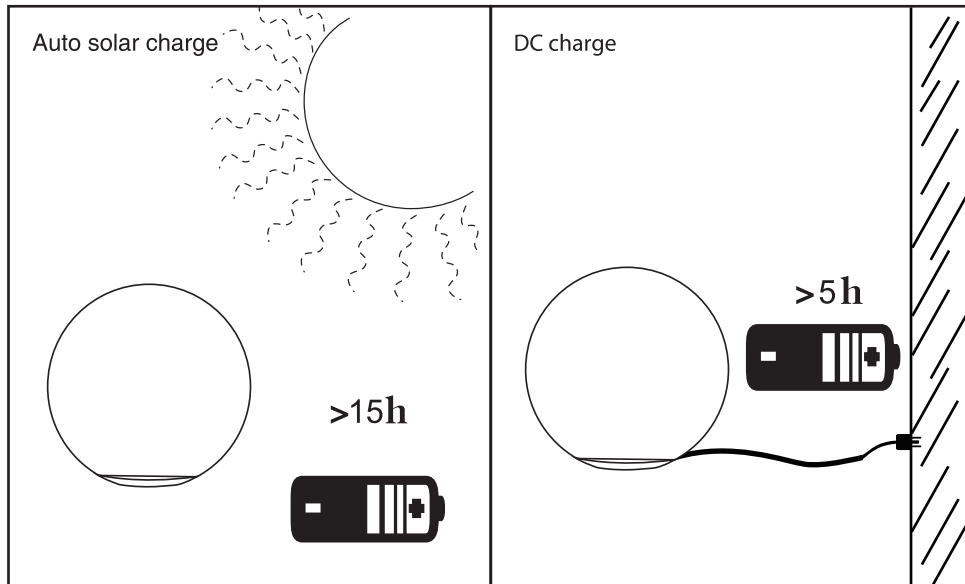
- 1) To avoid drop, electrical shock, broken etc, do not change any parts of lamp personally.

### User Manual

- 1) To avoid fire, do not put near high temperature for long time.
- 2) To avoid fire, do not charge the lamp with excessive voltage.
- 3) Please shut down the power supply if there are any abnormal, and contact the qualified personnel.

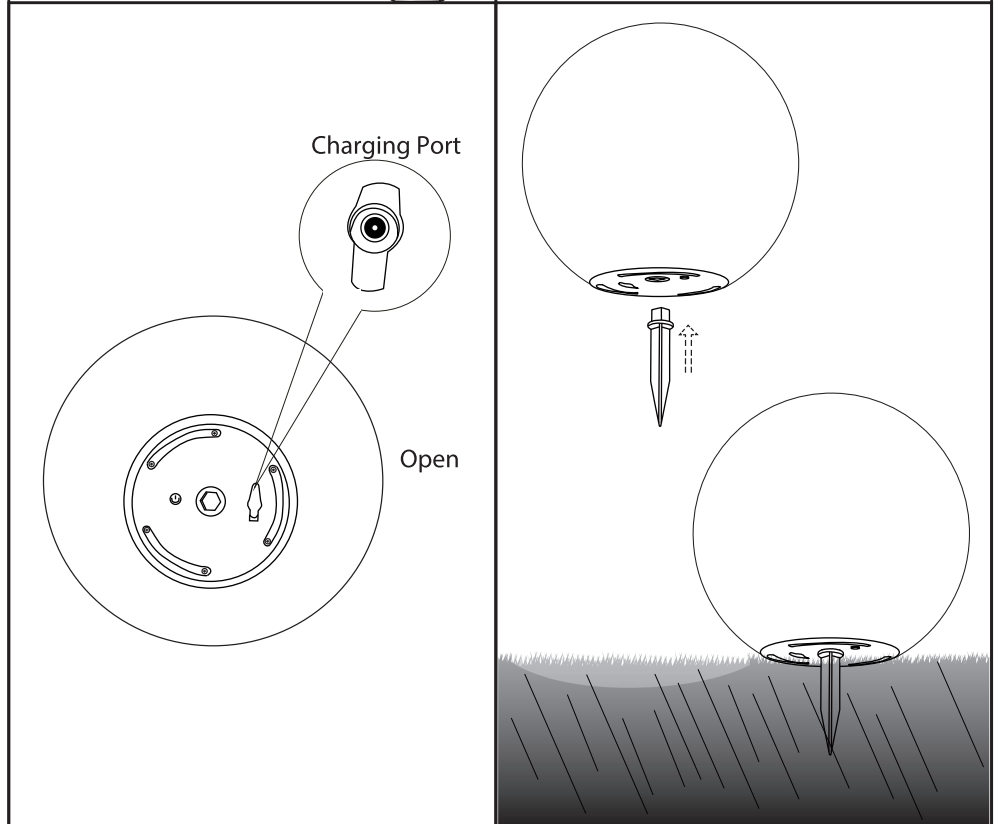
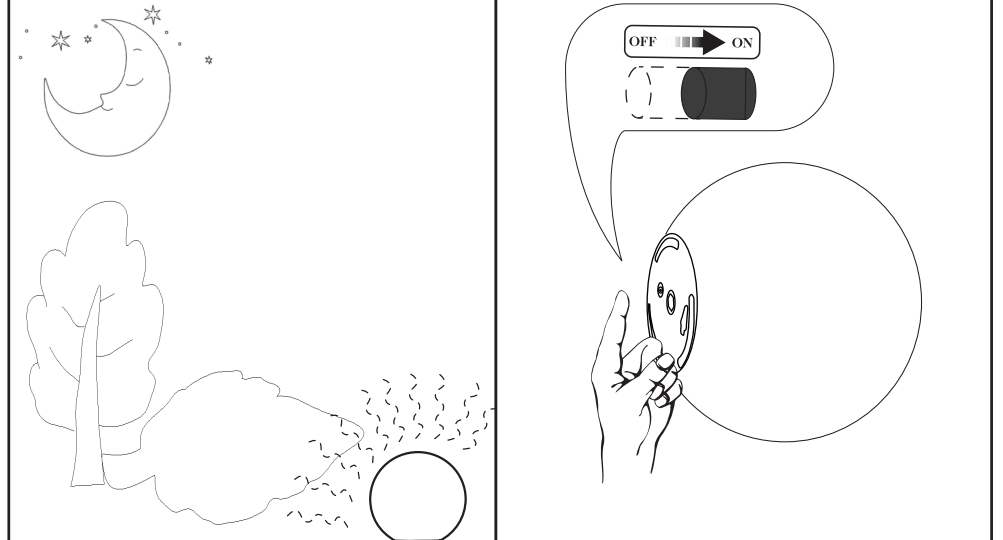
### Charging instructions

- 1) Before first use, make sure the battery is fully charged.
- 2) When charging, the indicator on the base will turn red; and when full charged, the indicator will blue.



P.1

Lighting in dim environment automatically



P.2

# Remote control instructions



1. Brightness Increase
2. Brightness Decrease
3. Switch OFF
4. Switch ON
5. Color Selection-Static Color
6. Flash-colors keep alternating automatically
7. Strobe - flash of 16 colors like disco lights
8. Fade- light fade in and out of 16 colors automatically
9. Smooth - colors changing in a slow motion