

INVEST CHERISH PASS ON



LUCIA HALL
JEWELLERY

A former stylist at Liberty of London, now living and working in Sussex, Lucia Hall trained with the award-winning designer and master craftsman Roger Doyle. She has now launched her own jewellery line, in Gold and Silver.

Hand-crafted mainly in 9ct and 18ct gold, for its timeless lustre, Lucia's range has a highly personal elegance all of its own. Her bespoke pieces are collector's items of the future, desired by the discerning.

All Lucia's work is handmade and hallmarked in the UK.

Lucia's creative philosophy is simple, based upon a passion for objects of beauty that make an emotional connection, underpinned by extraordinary craft skills and meticulous attention to detail...

"Invest, cherish and pass on. Jewellery should tell your story, it can represent a moment of strength, a memory to hold onto, or a celebration of achievement.

By wearing solid gold, you can ensure your pieces will last the test of time."

– Lucia Hall –



ALBERT CHAIN BRACELET | PRICES START AT £245

SOLID 9CT YELLOW GOLD
CHAIN STYLE: CLASSIC

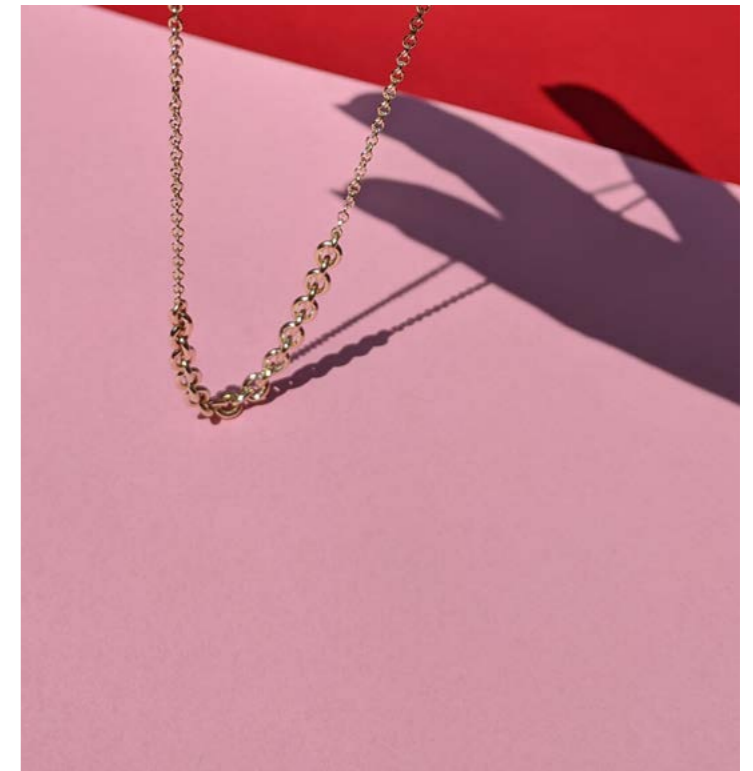
Inspired by vintage guard chains, and charm bracelets.
The focus here, being the beauty of the clasp.



**HEART PADLOCK
PRICES START AT £210**

SOLID 9CT YELLOW GOLD
CHAIN STYLE: BARLEY CORN / TRACE

Reproduced gold padlocks, inspired
by the Antique charms and clasps,
re-imagined as a simple pendant.



MIXED-LINK NECKLACE 16"
£240

SOLID 9CT YELLOW GOLD
CHAIN STYLE: CHUNKY OR SLIM
CABLE CHAIN

Chain is such a wonderful,
effective and timeless material.
This necklace brings the
focus back to the chain in a
contemporary yet classic way.



INITIAL CHARM
£180

SOLID 9CT YELLOW GOLD

Personalising your Jewellery allows
you to tell your story, highlight a
loved one, or use multiple charms
to create your own message



THE SHELL NECKLACE
£195

SOLID 9CT YELLOW GOLD OR
STERLING SILVER
CHAIN STYLE: 16" TRACE CHAIN
(OTHER LENGTHS AVAILABLE
ON REQUEST)

Cast from a tiny shell found
in West Sussex. It is a perfect
representation of how
beautiful nature is.