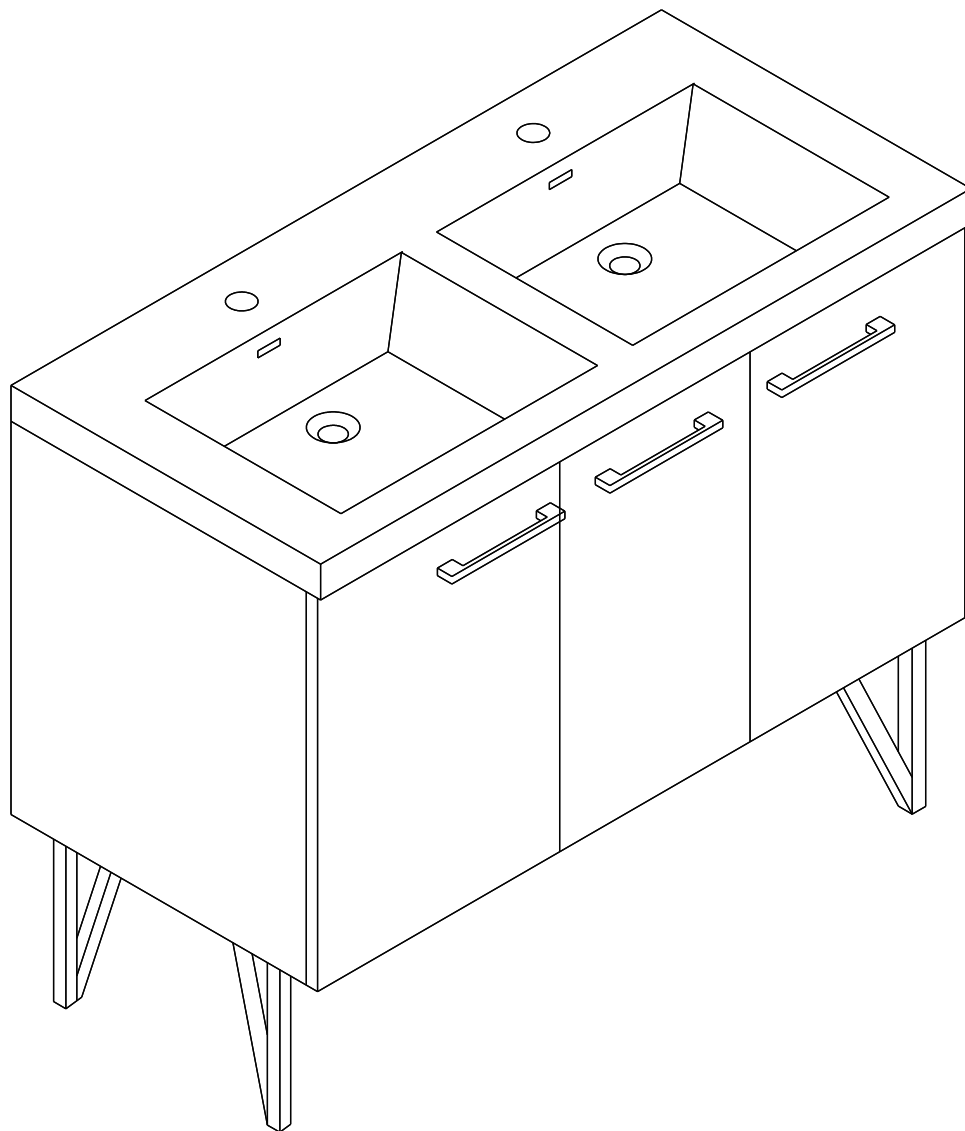


# INSTALLATION INSTRUCTIONS

*Swiss Madison*  
well made forever

## Annecy Bathroom Vanity



Share your pictures for a feature!  
using **#SwissMadison**





## Prior to Installation:

- Inspect vanity to ensure no damages have occurred while in shipping.
- Observe all plumbing and building codes in accordance with your state and local requirements.
- Additional floor and wall preparations may be necessary to avoid damage to the product.
- All dimensions are nominal! Be sure to measure your vanity prior to installation.

**General Recommendations:** Read installation and maintenance instructions thoroughly before installing the vanity. Be sure to use proper tools and always wear proper personal safety accessories for your protection.

**If you have any questions or concerns please contact us:**

1-434-623-4766  
info@swissmadison.com

## Thank you for your purchase

Thank you for purchasing a Swiss Madison Vanity.

We appreciate your business and know you will enjoy your sink for many years to come.

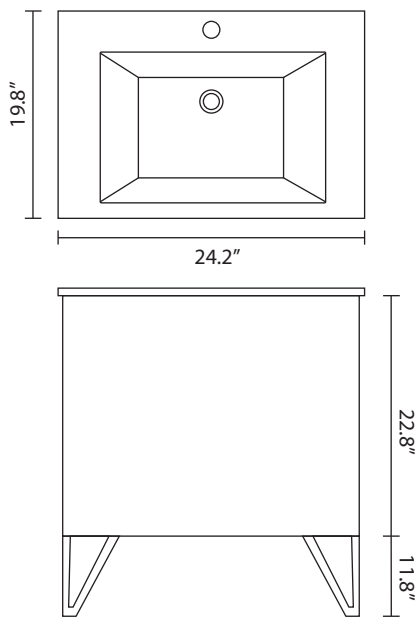
If you have any questions or require assistance we would be happy to help,  
please contact us at 1-434-6234766 or [info@swissmadison.com](mailto:info@swissmadison.com).

To learn more about our products, please visit:

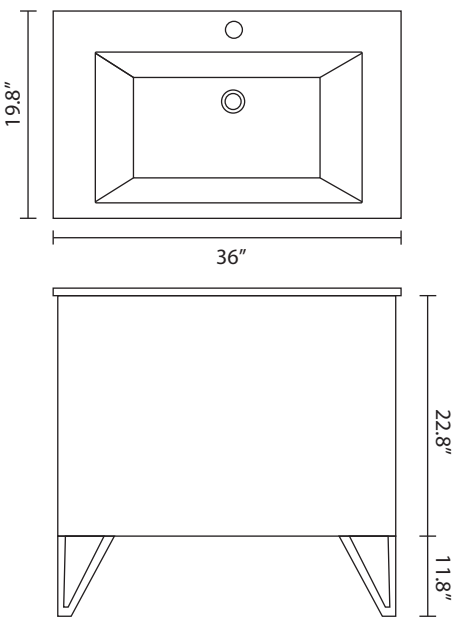
**[www.swissmadison.com](http://www.swissmadison.com)**

*Sincerely,*

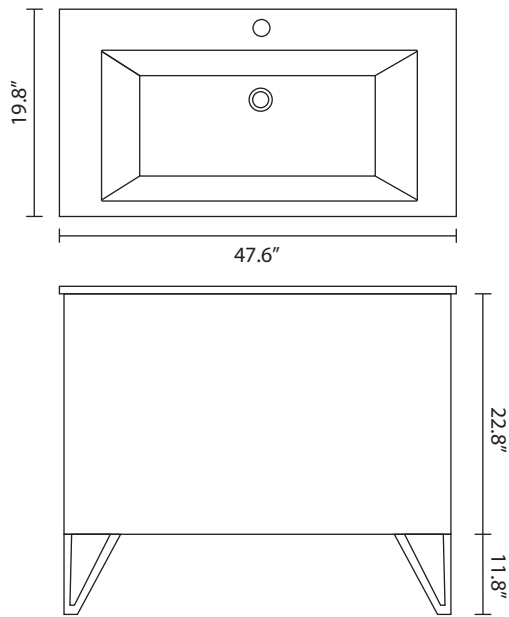
*The Swiss Madison Team*



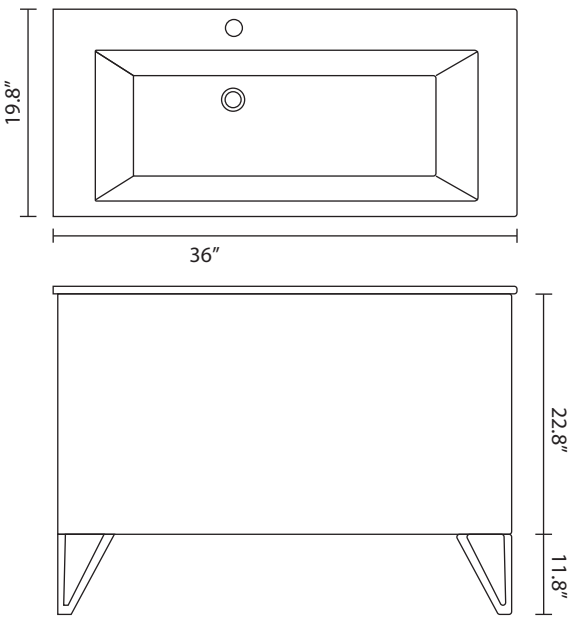
SM-BV212, SM-BV222, SM-BV232  
24.2" x 19.8" x 34.6"



SM-BV213, SM-BV223, SM-BV233  
36" x 19.8" x 34.6"

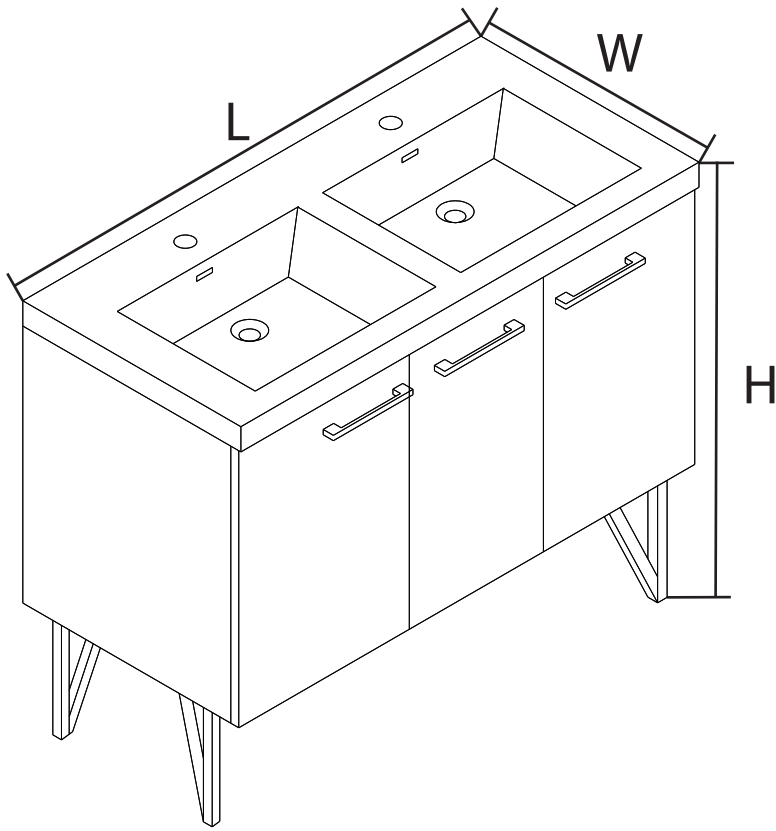


SM-BV214, SM-BV224, SM-BV234  
47.6" x 19.8" x 34.6"



SM-BV216, SM-BV226, SM-BV236  
59" x 19.8" x 34.6"

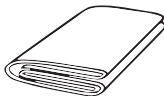
NOTE: All dimensions are nominal.



## SUGGESTED TOOLS AND MATERIALS



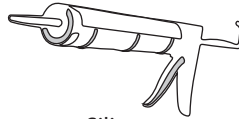
Safety Glasses



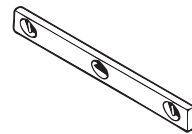
Drop Cloth



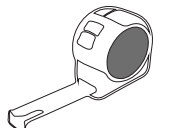
Gloves



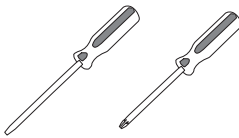
Silicone



Level



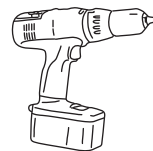
Tape Measure



Screw Drivers



Pencil



Drill

## PARTS LIST

- Swiss Madison Sink
- Vanity Components
- Mounting Hardware
- Drain (not included)\*  
SM-PD23B  
SM-PD23Z

**NOTE:** Specialized tools may be necessary to install Swiss Madison Vanity.

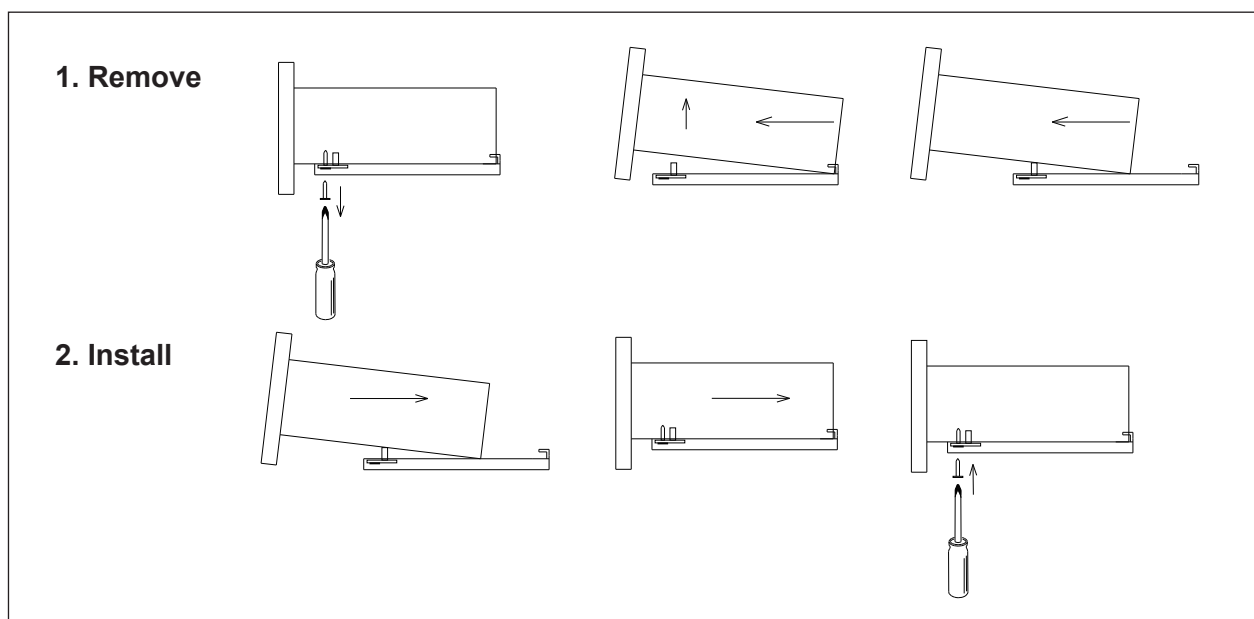
**\*Matching drains are not included, please contact us if you wish to purchase one.**

The step-by-step guidelines in the installation instructions are a general reference for installing a Swiss Madison Vanity.  
Should there be any discrepancies, Swiss Madison cannot be held liable.  
It is recommended to install all Swiss Madison products by hiring a licensed professional



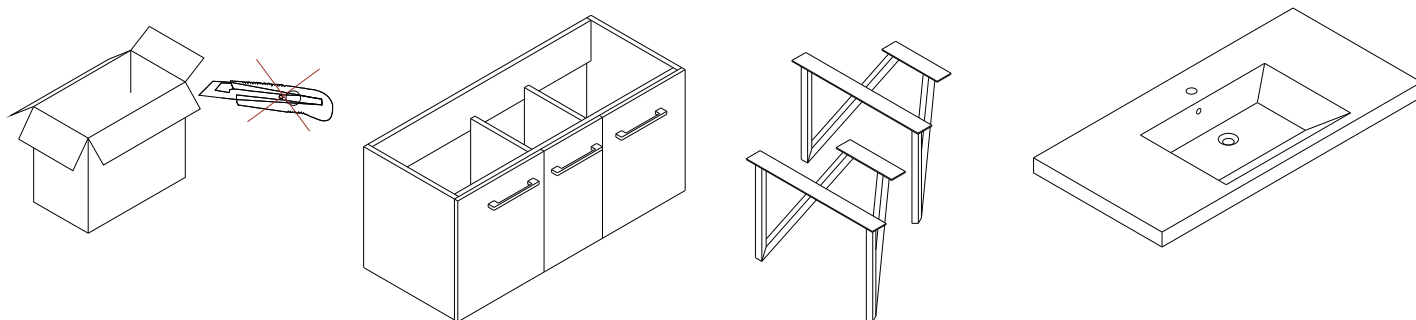
1. Read the complete instruction manual before beginning installation.
2. This vanity should be installed by an experienced plumber.
3. Not all drawings on this manual are drawn to scale. Please refer to the model chart.
4. Drain pipe and drain trap are not supplied. Connect to an existing drain pipe.
5. Always use drop cloth to protect vanity from damage during installation.
6. Two people are recommended to install and move this product.

## Draw Removal (if applicable)



## Remove Vanity and Sink from Box

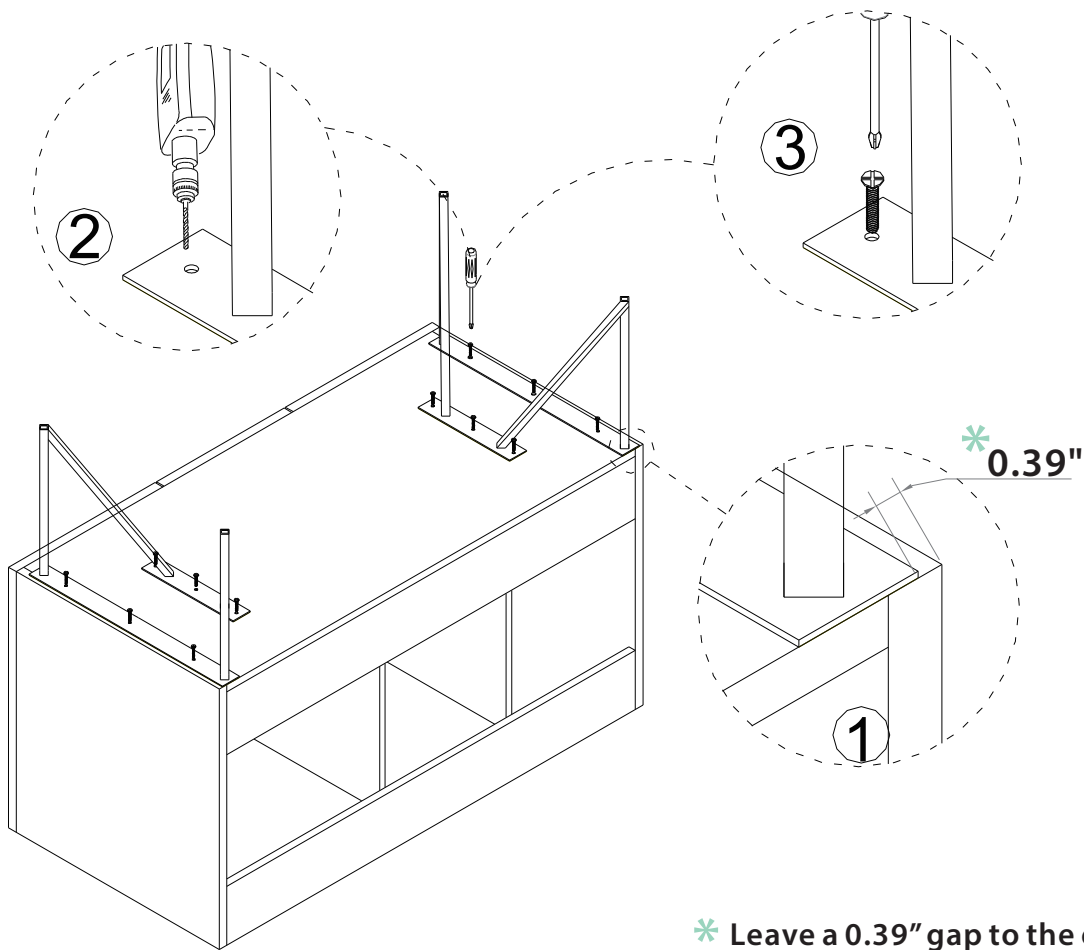
- Carefully remove vanity and sink from box.  
DO NOT use a box cutter to open box to avoid damaging the finish.



**NOTE:** Drawings may not exactly define contour of china.

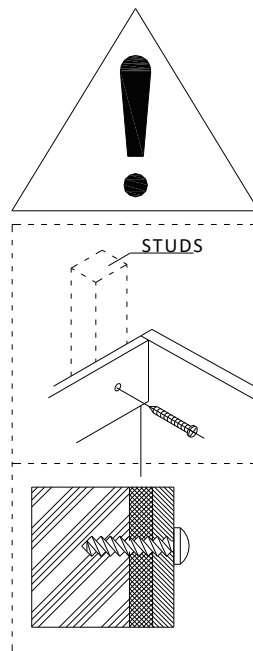
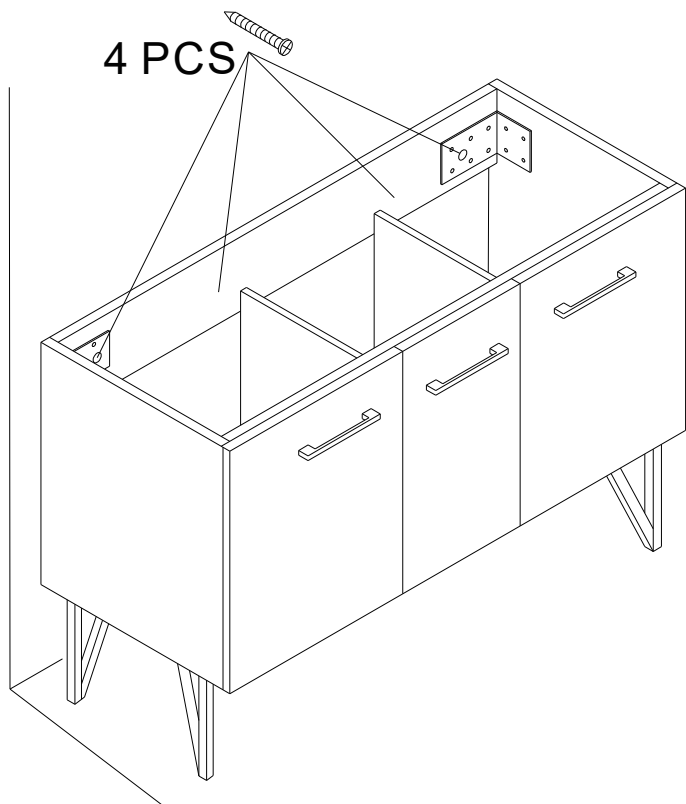
# Freestanding Vanity Installation

1.



\* Leave a 0.39" gap to the edge of the vanity.

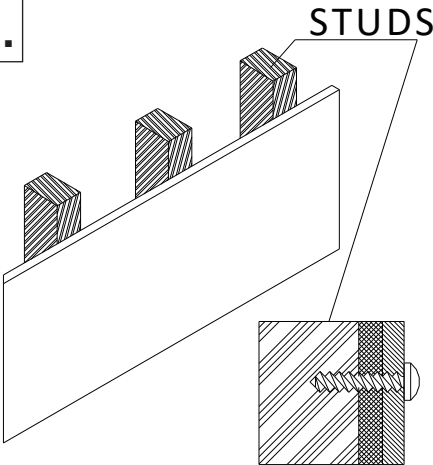
2.



# Wall Hung Vanity Installation

Select hardware that is best suited for your wall type.  
Important: Use "pan head" or "round head" screws with seat washers.  
Seat screws tightly against back rail or panel without driving into back rail or panel material.

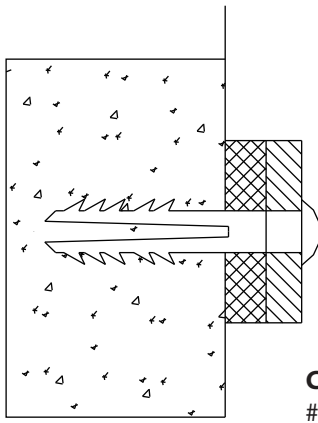
1.



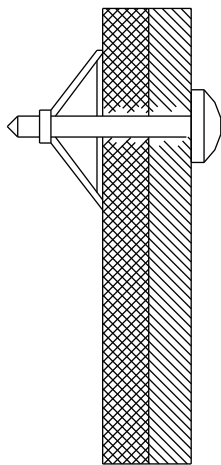
**STUDS**

**STUDS:** Secure to wall with #10" x 3" screws at stud location. Locate at least 2 wall studs.

- Use at least 4 wall anchors when installing a 24" and 30" cabinet.
- Use at least 6 wall anchors when installing a 36" and 48" cabinet.

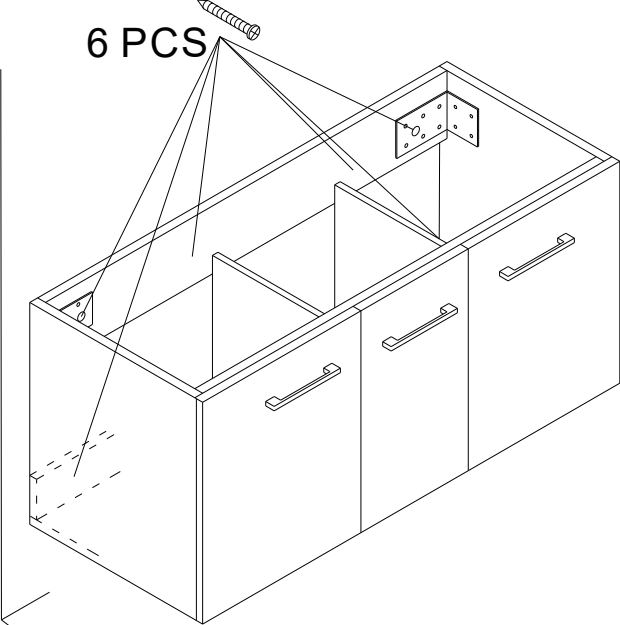


**CONCRETE:** Drill 1/4" holes, insert #10 wall anchors and secure to wall with #10" x 3" screws.

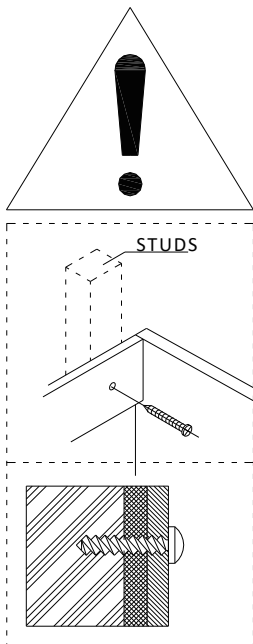


**DRYWALL:** Drill holes and secure to wall with toggle bolts.  
**Note:** Use toggle bolts only when cabinet cannot be attached to a wall stud.

2.



**6 PCS**

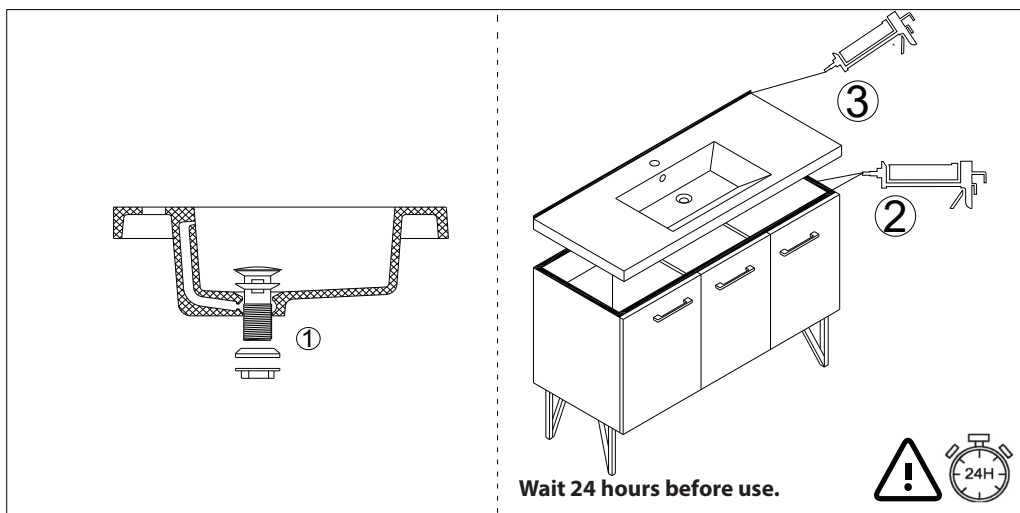


**STUDS**



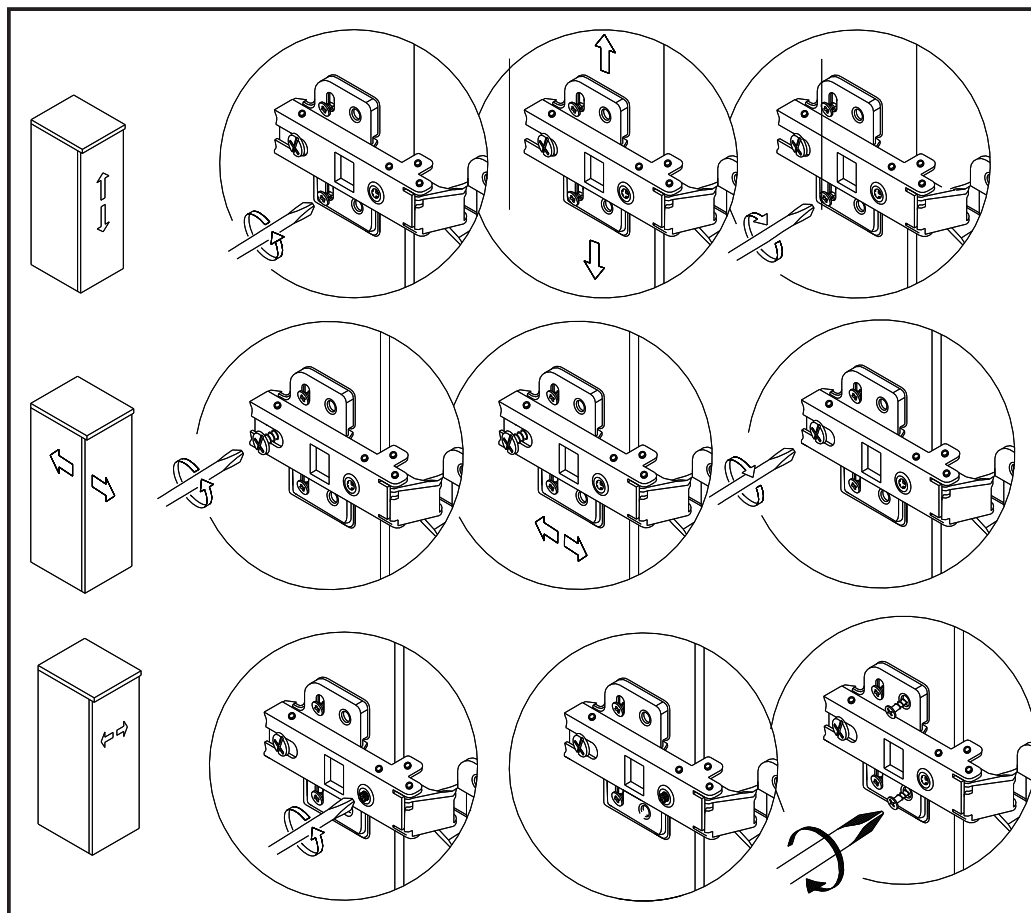
## Vanity Top Installation

1. Install the faucet per manufacturer's installation instructions.
2. Hand tighten the pop-up drain with a wrench. Be careful not to over-tightening the pop-up drain. Over tightening may cause cracks on the marble top.
3. Set the vanity top on top of the vanity base, checking the location of the p-trap and drain.
4. Remove vanity top from vanity base. Apply a thin bead of silicone compound around the vanity base and set the vanity top carefully in place.
5. Remove any excess silicone compound with a wet cloth.



## Hinge/Door Adjustment and Realignment (if applicable)

- If adjustment or realignment is needed, follow the instructions provided in the following chart.





## ONE YEAR LIMITED WARRANTY

1-434-MADISON

(623-4766)

19 Stults Rd., Dayton, NJ 08810

[www.swissmadison.com](http://www.swissmadison.com)

Swiss Madison® products are made with quality materials and excellent craftsmanship to provide the customers a long lasting product. In the case of any defects in materials or craftsmanship under regular use were inspected in the first year of purchase, Swiss Madison® will provide replacement parts at no charge, or at its option, replace any product or part of the product that is deemed defective, under normal installation, use, service and maintenance. This warranty applies only to the original purchaser. Proof of purchase will be required in the case of a claim.

Swiss Madison® recommends the installations to be made by a licensed, professional plumber. Swiss Madison® will not be held responsible for any damage or product failure due to improper installation, misuse, or failure to use a licensed professional. Swiss Madison® is not responsible for any removal or installation cost.

This One Year Limited Warranty will be voided if:

- The installation recommendations were not followed.
- The product has been moved from it's initial place of installation.
- The product has been modified.
- The product has been subjected to improper maintenance, abuse, misuse, excessive use of chemicals, accident or other damages.

Swiss Madison® makes no implication that products comply with any or all local building or plumbing codes. It is the consumer's responsibility to determine local code compliance. This warranty extends to the original purchaser and first consumer.

Swiss Madison® is not liable for any incidental, consequential or special damages associated with the return, replacement, installation or use of your product. This includes freight costs, labor, travel time, lost profit, home damages and other contingent liabilities and costs (including, without limitation, costs associated with experts, investigations, analyses, attorneys and other professionals and services).

The Swiss Madison® warranty is a comprehensive and explicit limit of liability, and all items outside of it are not addressable by or the responsibility of Swiss Madison®. Certain states have variances regarding implied warranties and in those situations we remain fully compliant.

In the case of any questions or a claim contact us directly at 1-434-MADISON (623-4766).

**WARNING:** Content may contain sharp and other possibly harmful pieces and may cause hazard to children and adults, Swiss Madison® is not responsible in any way for personal damage.