

## friend or foe?

### A general pest and beneficial insect field guide

Promoting beneficial insects that are pollinators and/or natural predators can be an important component of managing your organic agricultural system. Natural predators provide a biological service by preying on insects that are considered pests — those insects that have a negative impact on your health, quality of life, or crops.

To effectively manage your insect populations, it is important to first be able to distinguish between our friends and foes. Please use this insect field guide to assist you with general insect identification. For insect identification for your specific location, be sure to contact your local state extension office for more information!

#### Cole Crop Pests – FOE

*Broccoli, Brussels Sprout, Cabbage, Cauliflower, Kale, Kohlrabi*



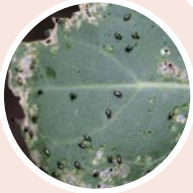
Cabbage Looper<sup>3</sup>



Diamondback Moth<sup>4</sup>



Imported Cabbageworm<sup>5</sup>



Flea Beetles<sup>2</sup>



Seedcorn Maggot<sup>2</sup>

#### Cucurbit Crop Pests – FOE

*Cucumber, Melon, Squash, Pumpkin, Watermelon*



Aphids<sup>1</sup>



Cucumber Beetles<sup>2</sup>



Squash Bugs<sup>2</sup>



Whiteflies<sup>2</sup>

#### Solanaceous Crop Pests – FOE

*Eggplant, Pepper, Tomato*



Armyworm Complex<sup>1</sup>



Hornworms<sup>6</sup>



Stink Bugs<sup>7</sup>



Thrips<sup>2</sup>

#### Beneficials – FRIEND



Assassin Bugs<sup>8</sup>



Bees



Big-Eyed Bugs<sup>4</sup>



Braconid Wasps<sup>9</sup>



Ground Beetles<sup>10</sup>



Hoverflies<sup>11</sup>



Lacewing Larvae<sup>2</sup>



Lady Beetle Larvae<sup>1</sup>



Spined Soldier Bug  
(Predatory Stink Bugs)<sup>12</sup>



Spiders<sup>4</sup>

#### Image credits:

- Clemson University - USDA Cooperative Extension Slide Series, Bugwood.org;
- Whitney Cranshaw, Colorado State University, Bugwood.org;
- R.J. Reynolds Tobacco Company Slide Set, R.J. Reynolds Tobacco Company, Bugwood.org;
- Russ Ottens, University of Georgia, Bugwood.org;
- Ansel Oommen, Bugwood.org;
- Eddie McGriff, University of Georgia, Bugwood.org;
- Kristie Graham, USDA ARS, Bugwood.org;
- Susan Ellis, Bugwood.org;
- Gerald J. Lenhard, Louisiana State University, Bugwood.org;
- John C. French Sr., Retired, Universities: Auburn, GA, Clemson and U of MO, Bugwood.org;
- Steven Katovich, USDA Forest Service, Bugwood.org;
- Frank Peairs, Colorado State University, Bugwood.org.