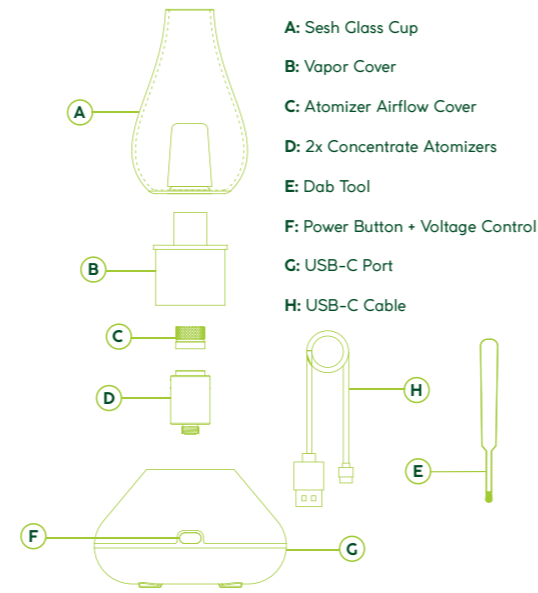




let's sesh
Let's Sesh
 let's sesh
Let's Sesh
 let's sesh
Let's Sesh

items included

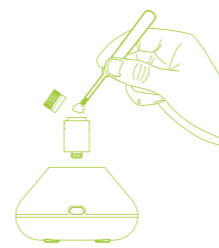


quick start

1 Charging

Fully charge your O.pen Sesh before the first use. Charging will take about 2 hours. The light above the power button will glow red while charging and turn green when fully charged.

- red = charging
- green = fully charged



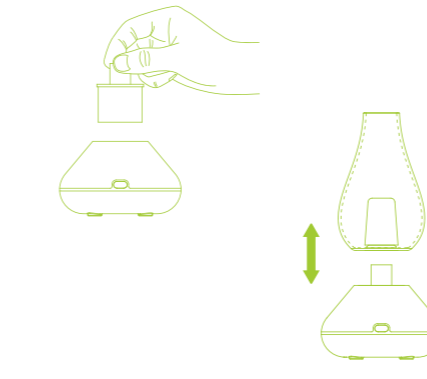
2 Preparing Your Sesh

Begin by disassembling the glass sesh cup and vapor cover. Then, use a dab tool to load concentrate directly into the concentrate atomizer. If you are using a 510-thread cartridge, screw it directly into the base of the O.pen Sesh.



3 Activate Your Sesh

Replace the vapor cover and glass once your desired concentrate or 510-thread cartridge have been loaded in.



4 Power Your Sesh

To turn the device on click 5x. Your O.pen Sesh is equipped with 4 voltage modes. You can cycle voltage modes by clicking 3x.

5x clicks (on/off)

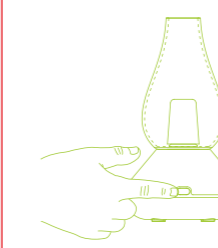


5 Temperature Settings

3x clicks to change temperature settings/LED color.

low med high dab
 2.7v 3.2v 3.6v 4.0v

3x clicks (cycle voltages)



6 Heat Your Sesh

Your Sesh comes with automatic heating. Simply press the power button 2x to begin automatic heating. To stop vapor production simply click 1x.

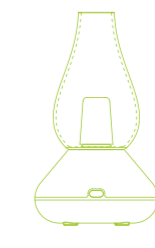
2x clicks (automatic heating)

1x click (stop automatic heating)



7 Enjoy Your Sesh

The O.pen Sesh produces smooth, flavorful vapor that can be enjoyed by lifting the glass cup off the base, sipping, enjoying and maybe even passing. Or simply, enjoy your sesh directly from the glass attached to the base.



quick reference guide

Vapor Chart

low medium high dab
 2.7v 3.2v 3.6v 4.0v

Click Guide

5x to turn on/off
 3x to cycle voltage modes
 2x to begin automatic vapor production
 1x to cease vapor production
 Press & hold for continuous vapor production

cleaning & maintenance:

1. Make sure the device is cool to the touch and then disassemble the glass vapor cup, vapor cover and atomizer.
2. Soak the glass and vapor cap in isopropyl alcohol. Use a wipe or cotton swab with isopropyl alcohol to clean out the atomizer. Thoroughly rinse the glassware with clean water.
3. Ensure all parts are dry before reassembly.
4. We recommend cleaning the atomizer in-between uses with a cotton swab or wipe. Always ensure the atomizer is cool to the touch before cleaning.



charging

Connect USB-C cable into charging port to start charging. The LED light will pulse red when it is charging. The LED light will turn to green when fully charged. Please do not use the device while charging.

Device Troubleshooting Indicator Lights

8 red flashes: low battery level; charge your device soon for better performance and battery life maintenance.
 2 red flashes: short-circuit or cartridge not detected. Please ensure you have a 510-thread cartridge or atomizer loaded. If you do and get 3 flashes, the loaded device is not working and needs to be replaced with a new component part.

important warnings

- Always allow to completely cool before touching, cleaning or placing back on the vaporizer base. Do not touch the metal components or chamber during use. NEVER vape while charging.
- Keep the main device dry and never expose it to water, moisture, liquids or high humidity.
- Store device in a cool dark place when not in use. Do not store the device in the carrying case with water in the glass bubbler.
- Do not expose to extreme temperature or direct sunlight.
- Do not drop or submerge in liquid.
- Do not modify the electronics in any way.

- Do not allow water in the bottom chamber of the atomizer.
- Do not charge or operate the device at ambient temperature below 32°F (0°C) or above 100°F (37°C)
- Do not sell, provide or allow access to minors.
- Keep all parts, concentrates, herbs and liquids away from children, pets and flammable materials.
- Dropping or submerging in liquid, improper cleaning, neglect, or any other damage that is not a result of defective materials or craftsmanship will void your warranty.

warranty

We offer a 1-year limited warranty for your O.pen Sesh Device. The 1-year warranty applies from the date of purchase and proof of purchase via an online order or physical receipt is required for all returns.

Your warranty covers but is not limited to, manufacturer defects such as:

- Persistent atomizer/510 connection issues preventing use
- Power button stops working and/or is not responsive
- Charging port no longer works
- Glass broken on arrival (must submit proof within 7 days of receipt)

Please visit openvape.com to learn more about our warranty and how to submit a claim.

If you purchased an O.pen Sesh at a physical retail location, a receipt is required for all warranty claims.

legal

Please strictly use as intended. This product should be used only by persons of legal age in congruence with state and federal law. We reserve the right to verify the age of the consumer prior to every purchase. This device is not intended for any use which is illegal under any state or federal law. Moreover, this product is not intended to diagnose, prevent, treat, or cure any disease or medical condition. If you are pregnant, nursing, taking medication for a medical condition, or suspect you have a medical condition, please consult your physician before using



Keep Out of Reach of Children

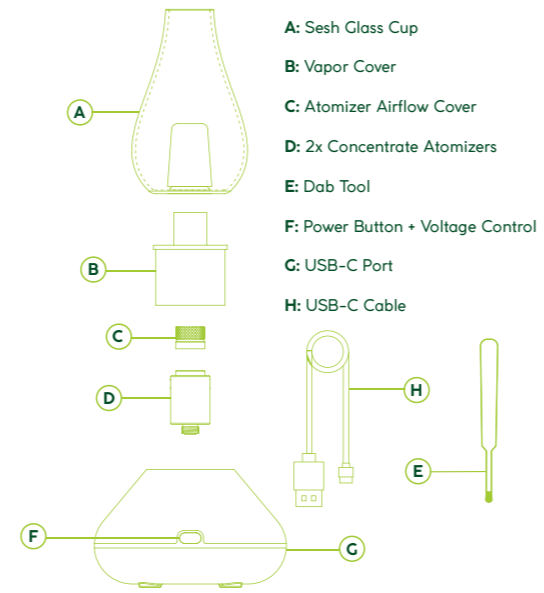
let's sesh
Let's Sesh
 let's sesh
Let's Sesh
 let's sesh
Let's Sesh





let's sesh
Let's Sesh
 let's sesh
Let's Sesh
 let's sesh
Let's Sesh

items included

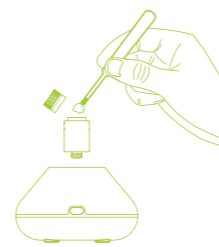


quick start

1 Charging

Fully charge your O.pen Sesh before the first use. Charging will take about 2 hours. The light above the power button will glow red while charging and turn green when fully charged.

- red = charging
- green = fully charged



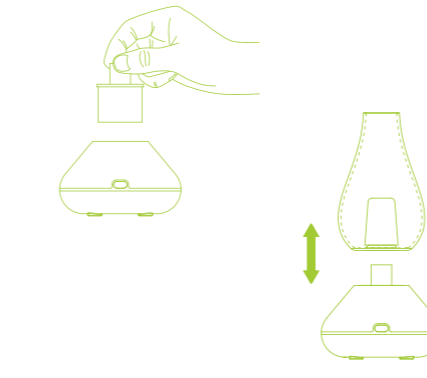
2 Preparing Your Sesh

Begin by disassembling the glass sesh cup and vapor cover. Then, use a dab tool to load concentrate directly into the concentrate atomizer. If you are using a 510-thread cartridge, screw it directly into the base of the O.pen Sesh.



3 Activate Your Sesh

Replace the vapor cover and glass once your desired concentrate or 510-thread cartridge have been loaded in.



4 Power Your Sesh

To turn the device on click 5x. Your O.pen Sesh is equipped with 4 voltage modes. You can cycle voltage modes by clicking 3x.

5x clicks (on/off)

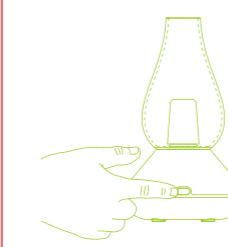


5 Temperature Settings

3x clicks to change temperature settings/LED color.

low med high dab
 2.7v 3.2v 3.6v 4.0v

3x clicks (cycle voltages)

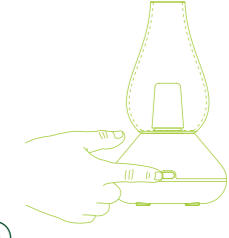


6 Heat Your Sesh

Your Sesh comes with automatic heating. Simply press the power button 2x to begin automatic heating. To stop vapor production simply click 1x.

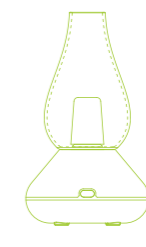
2x clicks (automatic heating)

1x click (stop automatic heating)



7 Enjoy Your Sesh

The O.pen Sesh produces smooth, flavorful vapor that can be enjoyed by lifting the glass cup off the base, sipping, enjoying and maybe even passing. Or simply, enjoy your sesh directly from the glass attached to the base.



quick reference guide

Vapor Chart

low medium high dab
 2.7v 3.2v 3.6v 4.0v

Click Guide

5x to turn on/off
 3x to cycle voltage modes
 2x to begin automatic vapor production
 1x to cease vapor production
 Press & hold for continuous vapor production

cleaning & maintenance:

- Make sure the device is cool to the touch and then disassemble the glass vapor cup, vapor cover and atomizer.
- Soak the glass and vapor cap in isopropyl alcohol. Use a wipe or cotton swab with isopropyl alcohol to clean out the atomizer. Thoroughly rinse the glassware with clean water.
- Ensure all parts are dry before reassembly.
- We recommend cleaning the atomizer in-between uses with a cotton swab or wipe. Always ensure the atomizer is cool to the touch before cleaning.



charging

Connect USB-C cable into charging port to start charging. The LED light will pulse red when it is charging. The LED light will turn to green when fully charged. Please do not use the device while charging.

Device Troubleshooting Indicator Lights

8 red flashes: low battery level; charge your device soon for better performance and battery life maintenance.
 2 red flashes: short-circuit or cartridge not detected. Please ensure you have a 510-thread cartridge or atomizer loaded. If you do and get 3 flashes, the loaded device is not working and needs to be replaced with a new component part.

important warnings

- Always allow to completely cool before touching, cleaning or placing back on the vaporizer base. Do not touch the metal components or chamber during use. NEVER vape while charging.
- Keep the main device dry and never expose it to water, moisture, liquids or high humidity.
- Store device in a cool dark place when not in use. Do not store the device in the carrying case with water in the glass bubbler.
- Do not expose to extreme temperature or direct sunlight.
- Do not drop or submerge in liquid.
- Do not modify the electronics in any way.

- Do not allow water in the bottom chamber of the atomizer.
- Do not charge or operate the device at ambient temperature below 32°F (0°C) or above 100°F (37°C)
- Do not sell, provide or allow access to minors.
- Keep all parts, concentrates, herbs and liquids away from children, pets and flammable materials.
- Dropping or submerging in liquid, improper cleaning, neglect, or any other damage that is not a result of defective materials or craftsmanship will void your warranty.

warranty

We offer a 1-year limited warranty for your O.pen Sesh Device. The 1-year warranty applies from the date of purchase and proof of purchase via an online order or physical receipt is required for all returns.

Your warranty covers but is not limited to, manufacturer defects such as:

- Persistent atomizer/510 connection issues preventing use
- Power button stops working and/or is not responsive
- Charging port no longer works
- Glass broken on arrival (must submit proof within 7 days of receipt)

Please visit openvape.com to learn more about our warranty and how to submit a claim.

If you purchased an O.pen Sesh at a physical retail location, a receipt is required for all warranty claims.

legal

Please strictly use as intended. This product should be used only by persons of legal age in congruence with state and federal law. We reserve the right to verify the age of the consumer prior to every purchase. This device is not intended for any use which is illegal under any state or federal law. Moreover, this product is not intended to diagnose, prevent, treat, or cure any disease or medical condition. If you are pregnant, nursing, taking medication for a medical condition, or suspect you have a medical condition, please consult your physician before using.



Keep Out of Reach of Children

let's sesh
Let's Sesh
 let's sesh
Let's Sesh
 let's sesh
Let's Sesh

let's sesh