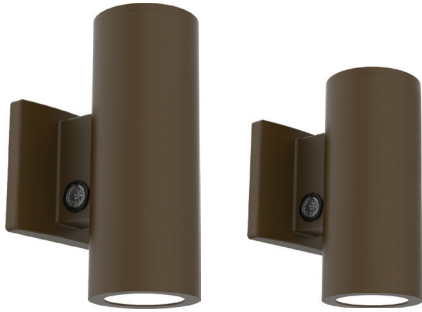


CONTRACTOR:	
PROJECT:	DATE:
PREPARED BY:	MODEL#:

**SERIES AND SPECIFICATIONS**



**SHN Series**

The SHN Wall Cylinder is a stylish architectural wall mount luminaire. It is ideal for accent lighting on building facades along walkways or near building entrances. Some typical installations include hotels, theaters and restaurants.



**FEATURES & SPECIFICATIONS**

**Intended Use**

Suitable for use in outdoor space.

**Construction**

ADC12 Aluminum heat sink, outdoor powder coating

**Dimming**

0-10 Volt dimming

**Lens**

High light transmittance PC + Glass

**Operating Temperature**

-40 - 40°C

**Listings**

UL listed to US and Canadian safety standards. Wet location listed.

**Photocell**

Integrated photocell with ON/OFF switch

**Warranty**

Guaranteed for five years from the purchase date of the product, against mechanical defects in manufacturing.

**NOTE:** Actual performance may differ as a result of end-user environment and application. All values are design or typical values, measured under laboratory conditions at 25 °C. Specifications subject to change without notice.

**PERFORMANCE SPECIFICATIONS**

**Input**

120-277V

**Power Factor**

>0.9

**Frequency**

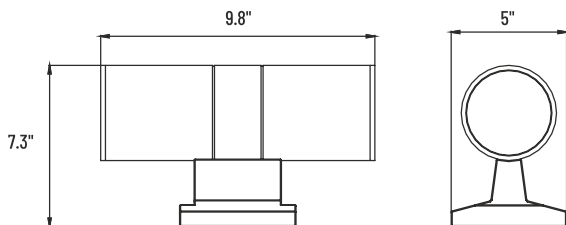
50/60Hz

**THD**

<20%

**LINE DRAWING**

SHN1 WSCS BZ 60




**ORDERING INFORMATION**

EXAMPLE: SHN2 WSCS BZ 60/60

SERIES	CONFIGURATION	WATTAGE	COLOR TEMP	FINISH	PRIMARY REFLECTOR	SECONDARY REFLECTOR*
SHN	[ 1 ] : Single Ended [ 2 ] : Double Ended	[ WS ] : Wattage Selectable 10/20/30W	[ CS ] : Color Selectable 3K/4K/5K	[ BZ ] : Bronze	[ 15 ] : 15 Degree [ 32 ] : 32 Degree [ 60 ] : 60 Degree	[ /15 ] : 15 Degree [ /32 ] : 32 Degree [ /60 ] : 60 Degree

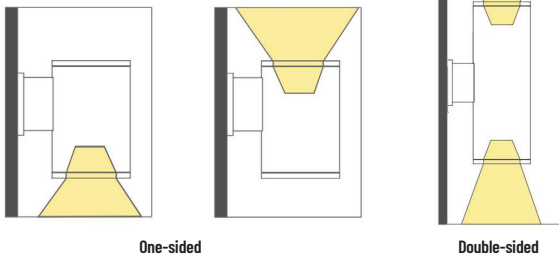
\*Applicable to double ended models only

**LIGHTING SPECIFICATIONS**

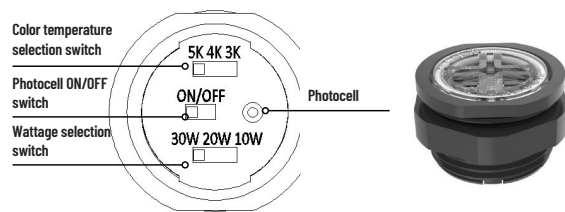
SERIES	LUMENS	LPW	WATTAGE	VOLTAGE	CRI
SHN1 WSCS BZ 60	2880.5(30W 5000K)	96.01	10-30W	120-277VAC	>70
SHN2 WSCS BZ 60/60	1642.2(30W 5000K)	54.74	10-30W	120-277VAC	>70

**CONTROL**

Lighting Schematic Diagram



Photocell Power Controller CCT



**PHOTOMETRICS**

