

# LED Linear Strip



## Product Description

Tanlite LED Linear Strip- fixture has a beautiful round tube design for commercial applications, combines the latest in LED technology 130lm/w brightness, 50000hrs high efficient led driver, beautiful light distribution optic lense and versatile installation like surface mount or chain hanging installation, with a typical saving energy of 80%, ideal for replacing 60-300W Metal Halide,



## Applications:

shopping center mall or other commercial indoor ceiling areas.



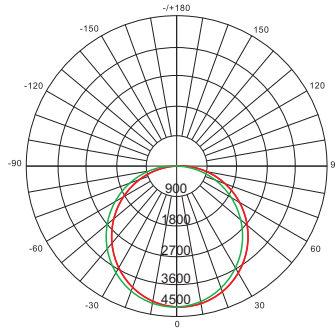
## Electric Characteristic:

Specification/Model	TE-LST4FT40W			
LED Chips	Lm80 HONGLI 2835LED			
Input power	40W			
Lumens output	5200LM			
Efficiency	130LM/W			
CRI	> 80Ra			
Color Temperature	3000K 4000K 5000K			
Input voltage	100-277V			
DIMMING	0-10V DIMMABLE			
Working temperature	-30~+60°C			
Total Harmonic Distortion	11.2%			
Power Factor	0.92			
Certificate	UL,cUL,DLC			
Equivalent	60-80W MH/HPS	80-200W MH/HPS	80-200W MH/HPS	200-300W MH/HPS

## DLC Ordering Model No Information

Product	Power	Replacement	Color Temperature	Options
TE-LST4FT40W	40W	80-200W MH/HPS	30K 3000K 40K 4000K 50K 5000K	LS=Linear strip 4FT=120CM

## Photometrics

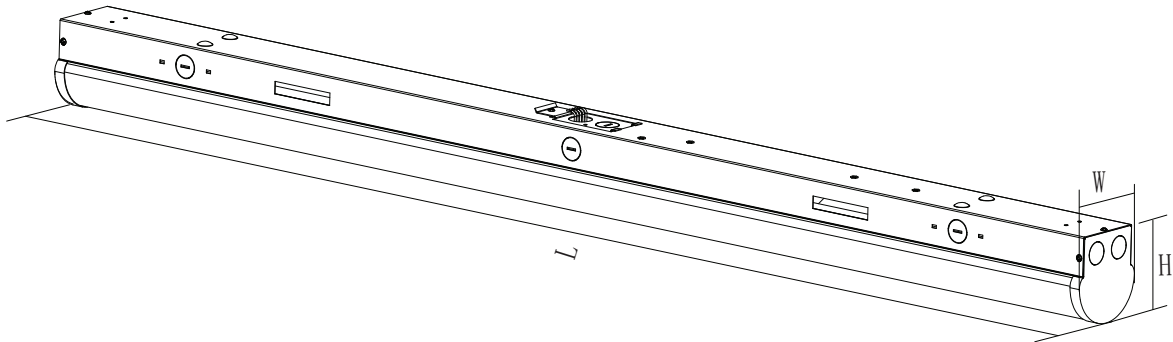


## Projected LED Lumen Maintenance

Operating hours	0	25000	50000
Lumen maintenance factor	1	0.91	0.8

Data references the extrapolated performance projections for the linear strip LED platform in a 25°C ambient, based on 10,000 hours of LED testing (tested per IESNA LM-80-08 and projected per IESNA TM-21-11).

## Dimensions:



Item	SIZE: L *W*H IN
LS-ST-4FT40W	48*3.3*3.5

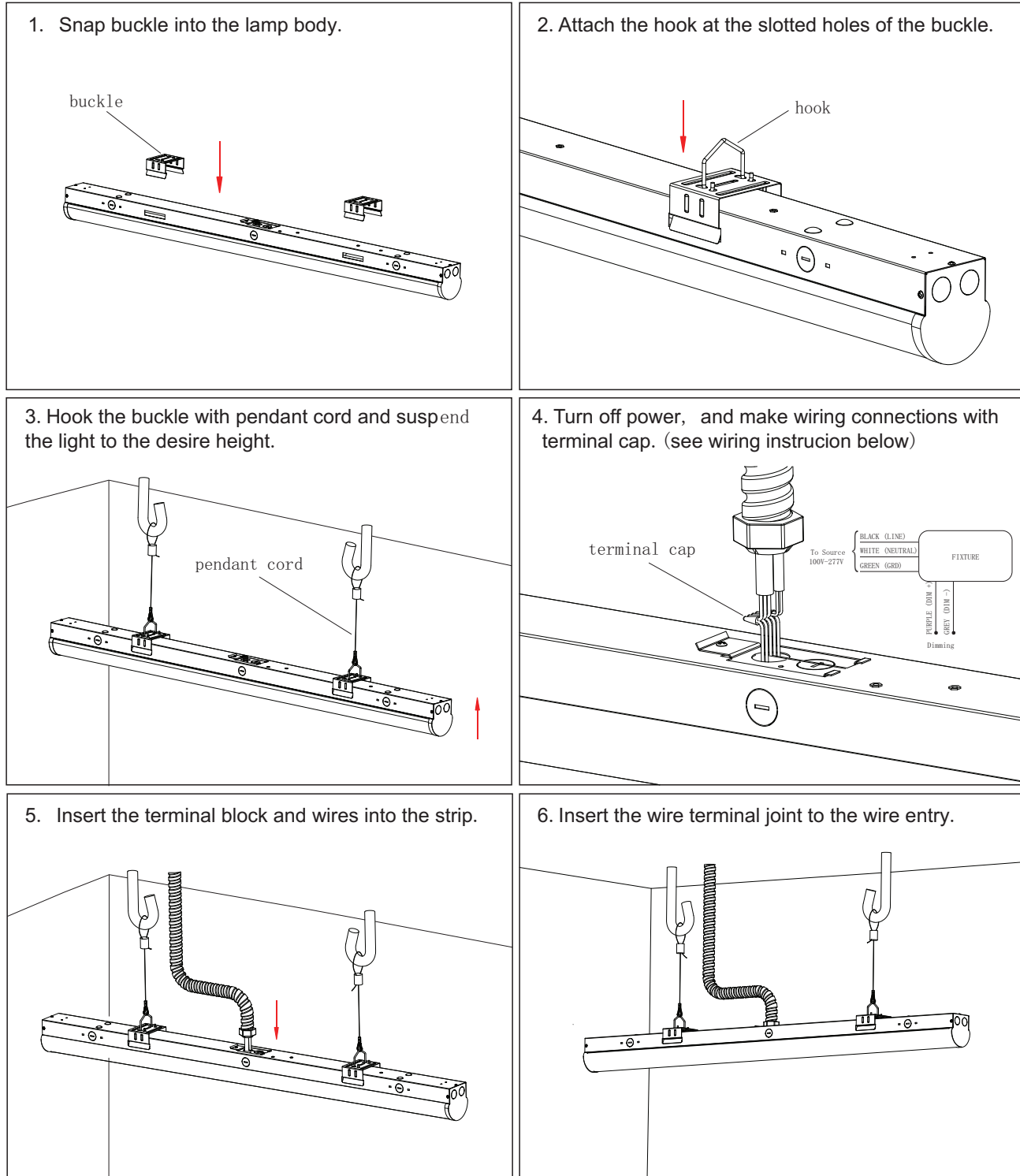
## After sale Service:

The product refers to electricians knowledge. Please don't disassemble it by yourself. If any quality problem happens, please contact the factory, for warranty details, contact factory.

NOTE: Actual performance may differ as a result of end-user environment and application. All values are without notice.

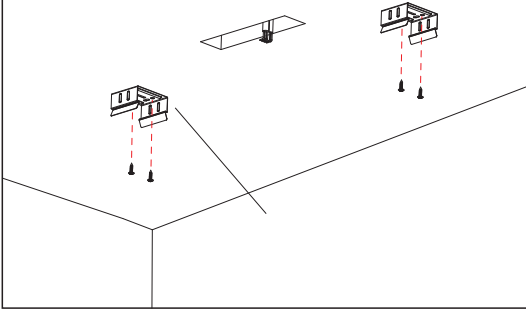
## INSTALLATION MANUAL

### Chain Installation

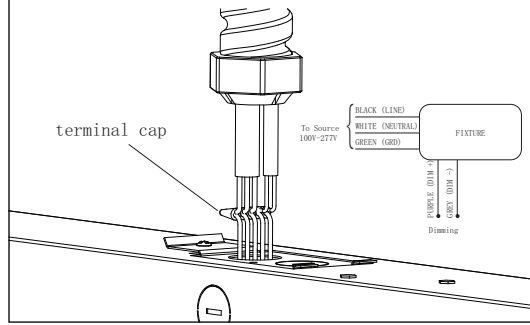


## Surface Mounted Installation

1. fix the buckles in parallel by screws with distance 641mm between each other.

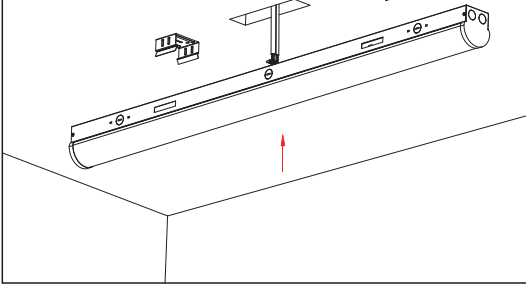


2. Turn off power, and make wiring connections with terminal cap. (see wiring instruction below).



3. Secure the strip with buckle.

buckle



4. Installation completed.

