

Corona

Pressure Compensating Online Drippers



2,1 LPH
(0.5 GPH)
PC



3,1 LPH
(0.8 GPH)
PC



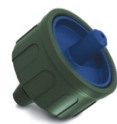
4,1 LPH
(1.0 GPH)
PC



8,1 LPH
(2.0 GPH)
PC



25,5 LPH
(6.7 GPH)
PC**



2,1 LPH
(0.5 GPH)
PCND



3,1 LPH
(0.8 GPH)
PCND



4,1 LPH
(1.0 GPH)
PCND



8,1 LPH
(2.0 GPH)
PCND

DRIPPER SPECIFICATIONS (DRAIN AND NO-DRAIN)

Flow Rate (LPH) @ 2 bar	Flow Path Width (mm)	Flow Path Depth (mm)	Flow Path Constant k* (atm)	Flow Exponent x	Coefficient of Variation (CV)	Friction Factor (Kd)	Required Filtration (mesh)
2,10	1,05	1,00	2,10	0,02	0,03	0,50	120*
3,10	1,05	1,20	3,10	0,02	0,04	0,50	120*
4,10	1,05	1,22	4,10	0,02	0,03	0,50	120*
8,10	1,30	1,25	8,10	0,03	0,04	0,50	120*
25,5 **	1,30	1,40	25,50	0,04	0,04	0,50	120*

* Disk or sand media filtration is required when organic contaminants are present.

** Cap available to diffuse stream on 25,5 LPH emitter.

Customer Benefits & Product Application

- Self-flushing mechanism flushes at every start-up ensuring reliable operation and less maintenance day-after-day for year - after - year usage.
- Large turbulent flow path emitters are injection moulded in our Inofyta, Greece facility, provide unmatched clogging resistance resulting in greater long term reliability and less maintenance even in poor water quality conditions.
- Industry leading CV performance and wide pressure compensating range (0,5 - 4 bar) delivers more consistent emission uniformity.
- No-drain (ND) models with 0,20 bar sealing pressure and 0,45 bar opening pressure, eliminates run-off puddling in uneven terrain or overhead drip applications.
- Highest quality plastic and silicone diaphragm, provide reliable performance in the toughest UV and chemical conditions.
- Ideal applications include vineyards, greenhouses, nurseries, and landscape over a wide range of inlet pressures and undulating terrain.

Abbreviations

ID = Inside Diameter

OD = Outside Diameter

LPH = Liters Per Hour

ND = No Drain

PC = Pressure Compensating



Eurodrip[®]
Install Confidence

55th Km National Road Athens-Lamia,

P.O. Box 34, 320 11 Inofyta, Greece

Tel.: +30 22620 54800, Fax: +30 22620 54801

e-mail: sales@eurodrip.gr

Website: www.eurodrip.org

Corona Specifications

