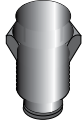


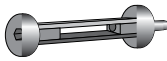
FITTINGS & ACCESSORIES

Air/Vacuum Valves



Part No.	Description	Color	Bag Qty./ Box Qty.	Wt. per 100 (lbs.)	Product Class
AVRV 50	1/2" Air/Vacuum release valve (1/2" MIPT inlet)	Black	25/100	1.6	21DI

Hole Punches



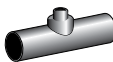
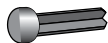
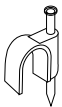
Part No.	Description	Color	Bag Qty./ Box Qty.	Wt. per 100 (lbs.)	Product Class
HP 100	Hole Punch for 1/8" Fittings. Insert Tool for BT 250, TT 250 Fittings	Blue	10/150	3.8	21DI
HP 125	Hole Punch for PC Plus™, Multi-Flo™, Aqua-Flo™, Dial-a-Flo™, Super-Flo™, Misti-Flo™ and 1/4" Fittings. Insert Tool for BT 250, TT 250 Fittings.	Green	10/150	3.8	21DI
HP 240	Hole Punch for Mono-Flo™ Emitters	Blue	10/50	4.1	21DI
PPT	Punch Pal™ Tool (Plastic Hole Punch Including Socket for Inerting Jets)	Orange	50/500	0.7	21DI

Emitter Access Boxes



Part No.	Description	Color	Bag Qty./ Box Qty.	Wt. per 100 (lbs.)	Product Class
EB 6	6" Emitter/Bubbler Access Box	Black	24/24	57.7	21DI
EBMD 6	6" Emitter/Bubbler Access Box with Metal Detection Capability	Black	24/24	61.6	21DI
EBDS 6	6" Emitter/Bubbler Access Box for Desert Landscaping	Tan	24/24	57.7	21DI
EBRC 6	6" Emitter/Bubbler Access Box for Reclaimed Water	Purple	N/A/24	57.7	21DI

Tubing Accessories and Miscellaneous



Part No.	Description	Color	Bag Qty./ Box Qty.	Wt. per 100 (lbs.)	Product Class
MC 250	1/4" Mounting Clamp (Fits A 220 and A 250 Tubing)	Black	100/4,000	0.2	21DI
MC 500	3/8" Mounting Clamp (Fits A 455 Tubing)	Black	100/1,500	0.4	21DI
MC 710	1/2" Mounting Clamp (Fits A 620 and A 700 Tubing)	Black	100/1,000	0.6	21DI
BP 250	Bug Plug for A 220 and A 250	Black	100/5,000	0.1	21DI
W 75	3/4" Vinyl Washer	Black	100/3,000	0.2	21DI
MTEE	1/4" Tee for Turbo-Flo™ Mister (TUR) (1/2" Slip x 1/2" Slip x 1/8" FIPT)	White	25/200	4.8	21DI
CAP 75	3/4" FHT Cap with Washer	Black	100/1,500	1.8	21DI
SAH	Adapter with Washer (3/4" FHT x 1/4" Barb)	Black	100/500	1.7	21DI
PHA 75	3/4" FHT Swivel x 3/4" FPT Swivel Adapter	Black	25/300	4.2	21DI
TNPH	3/4" Transition Nipple (3/4" MHT x 3/4" MPT)	Black	100/500	2.8	21DI