



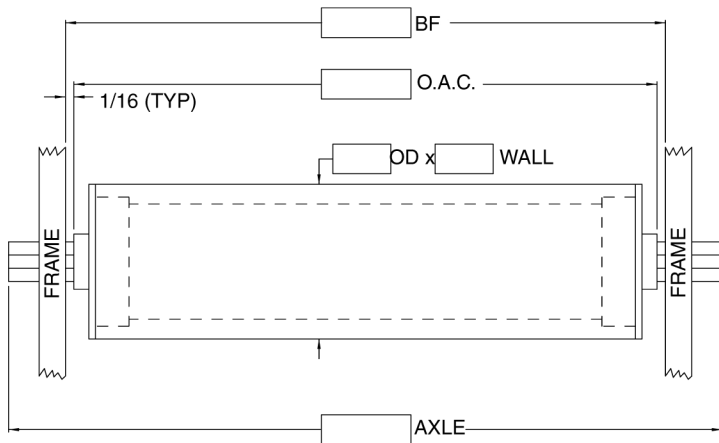
## ROLLER QUOTATION WORKSHEET

Company \_\_\_\_\_ Date \_\_\_\_\_  
 Contact \_\_\_\_\_ Quote Due \_\_\_\_\_ Desired Delivery \_\_\_\_\_  
 Phone No.: \_\_\_\_\_ Contact Email: \_\_\_\_\_ State \_\_\_\_\_  
 Omni Sales Contact: \_\_\_\_\_ Quote #: \_\_\_\_\_

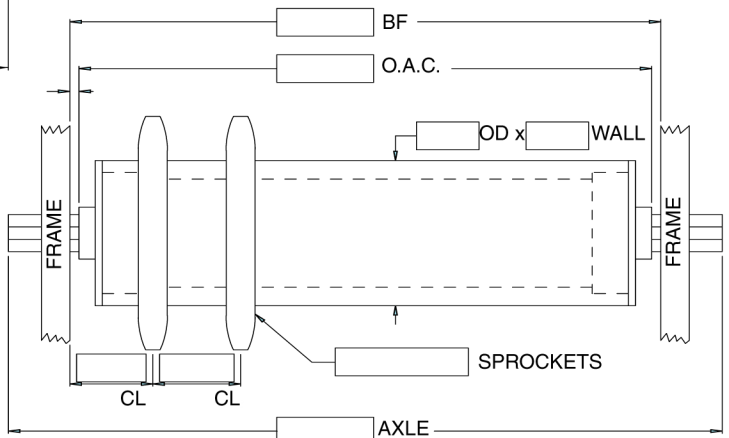
Quantity: \_\_\_\_\_  
 Between Frame Width (BF): \_\_\_\_\_  
 Overall Cone (OAC) (if roller is not in frame): \_\_\_\_\_  
 Roller Diameter: \_\_\_\_\_  
 Wall Thickness (Gauge): \_\_\_\_\_  
 Axle Size \_\_\_\_\_ (Hex or Round)  
 Axle Length \_\_\_\_\_ (or Standard)

Type of Bearing: \_\_\_\_\_  
 Pin Retained: \_\_\_\_\_  
 Spring Retained: \_\_\_\_\_  
 Groove Center Line: \_\_\_\_\_ (if applicable)  
 Sprocket Size: \_\_\_\_\_ (if applicable)  
 Load Capacity Required \_\_\_\_\_

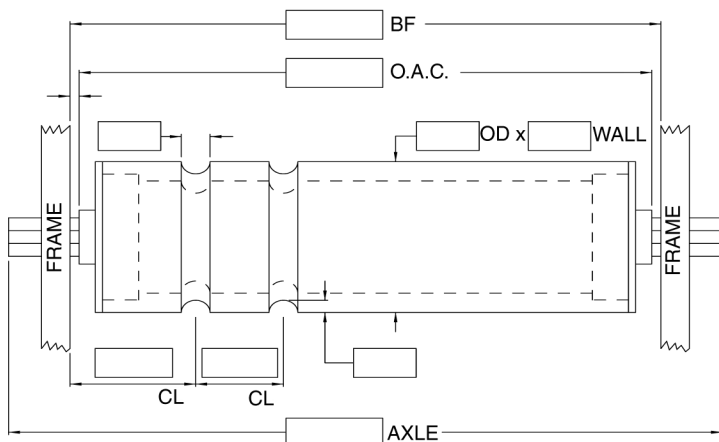
Note: Between Frame (BF) is the distance between the frames of the conveyor. The Between Frame measurement is needed to ensure proper fit into the conveyor. If the roller is not in conveyor provide the Overall Cone, the length of the roller from bearing tip to bearing tip. (See our Roller Measurement Guide for more information) Utilize the drawings below to depict more detailed specifications.



### GRAVITY ROLLER



### SPROCKETED ROLLER



### GROOVED ROLLER

Proposal Drawing Required:  Yes  No