

6V | 12V | 24V

GENIUSPRO50



A MULTI-VOLTAGE PROFESSIONAL BATTERY CHARGER.™

MULTI-VOLTAGE

6V, 12V, & 24V.

6-volt (50-amps), 12-volt (50-amps), and 24-volt (25-amps) for lead-acid automotive, marine, and deep-cycle batteries, including flooded, gel, AGM, and maintenance-free, plus lithium-ion.

0.0V

FORCE MODE.

For extremely dead batteries lower than 1-volt, manually turn on force mode to detect and charge batteries all the way down to zero volts.

24/7

ZERO OVERCHARGE.

Safely charge any battery year-round. Charge continuously without user intervention and with zero risk of overcharging your battery.

-40°C

ULTRA-FLEXIBLE CABLING.

Featuring ultra-flexible silicone cabling - down to -40°C - with protective nylon braided shielding for maximum protection against abrasion.



LEAD ACID



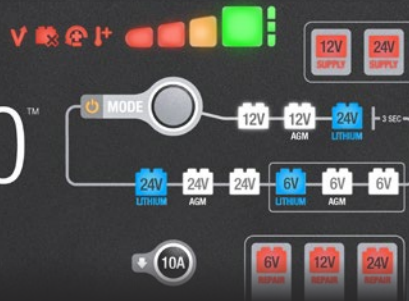
AUTO | MARINE | RV | POWERSPORT | LAWN & GARDEN

NOCO

30339 Diamond Parkway, #102
Glenwillow, OH 44139 | USA
1.800.456.6626

no.co

NOCO genius PRO 50™



CHARGING MODES

LEAD-ACID

Used for 6V, 12V, & 24V wet cell, gel, enhanced flooded, maintenance-free, & calcium batteries.



AGM

Used for 6V, 12V, & 24V AGM or maintenance-free batteries.



LITHIUM

Used for 6V, 12V, 24V lithium-ion batteries (including lithium iron phosphate). Only for batteries with Battery Management Systems (BMS).



REPAIR

Used to repair old, idle, damaged, stratified, or sulfated batteries.



SUPPLY

Converts to a DC power supply for 12V or 24V DC devices, or as a memory retainer when replacing a battery.



FORCE

Used to charge batteries below 1V. All charge mode LED's will flash and the selected mode will illuminate.

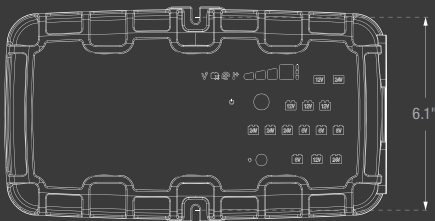


10A MODE

Allows the unit to operate at a lower charge current for smaller batteries or maintenance.

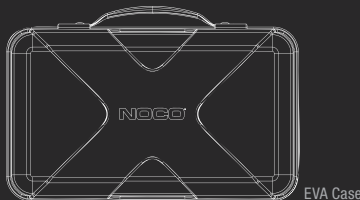


WHAT'S IN THE BOX

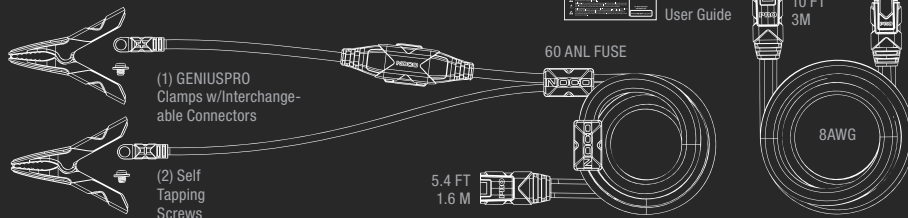


12.4" x 6.9" x 3.8" (316 x 176 x 97.5 cm)

*Accessories not to scale with GENIUSPRO50



EVA Case



(1) GENIUSPRO Clamps w/Interchangeable Connectors

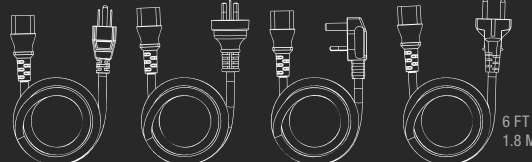
(2) Self Tapping Screws

Type A - NA

Type C - EU

Type I - AU

Type G - UK



NOCO

30339 Diamond Parkway, #102
Glenwillow, OH 44139 | USA
1.800.456.6626

no.co



THERMAL COMPENSATION.

The new integrated thermal sensor automatically monitors and adjusts the charging cycle based on fluctuations of ambient temperature. Avoids under-charging in cold weather down to -4°F and avoids over-charging in hot weather up to 122°F.

Battery Size CHARGING TIMES (based on 6V/12V modes)

50Ah	0.75hr	*Approximate charging times at 50% depth of discharge.
100Ah	1.5hr	
200Ah	3hr	
500Ah	6hr	
1000Ah	15hr	

TECHNICAL SPECIFICATIONS

CHARGING CURRENT:	50A (6V, 12V), 25A (24V)	
TYPES OF BATTERIES:	6V, 12V, 24V	
OUTPUT POWER:	750W	
CHARGING VOLTAGE:	Various	
WEIGHT:	5.0 lbs (2.26kg)	
INPUT/ WORKING VOLTAGE AC:	100-240 VAC, 50-60Hz	
LOW-VOLTAGE DETECTION:	1V (6V, 12V, 24V)	
BACK CURRENT DRAIN:	<0.5mA	
AMBIENT TEMPERATURE:	-4°F to +122°F (-20°C to +50°C)	
HOUSING PROTECTION:	IP20	
COOLING:	Forced Air	
VOLUMETRICS:	Retail Packaging: Dimensions: 18.11" x 11.22" x 9.65" Weight: 17.04lbs UPC: 0-46221-19051-6	Master Carton: Dimensions: 23.31" x 18.98" x 10.51" Weight: 36.49lbs Quantity: 2 UCC: 10046221190523
	Inner Carton: Dimensions: 16.93" x 9.92" x 7.76" Weight: 12.1lbs	Units Per Pallet: 48 Units



T 16A

ノコ・ジャパン合同会社

Intertek 5018876