

Puffer Coat

Size Conversion Chart:

Our Size	Womens UK Size	Mens UK Chest
X Small	6-8	32"
Small	8-10	36"
Medium	10-12	40"
Large	12-14	44"
X Large	16-18	48"

HOW TO MEASURE:

A - Sleeve Length:

This is measured from the shoulder seam to the end of the cuff.

B - Chest Width:

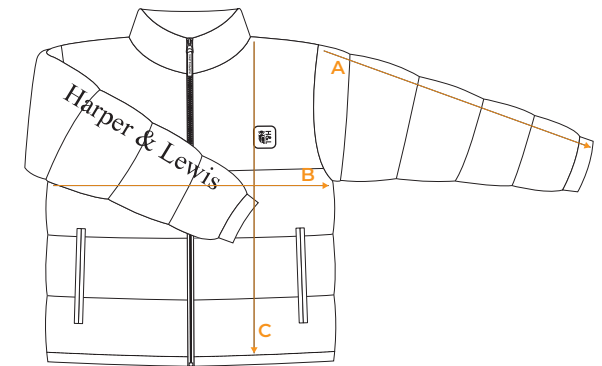
This is measured flat from seam to seam at the underarm.

C - Length:

Measured from the side of the neck to the bottom edge of the garment

Garment Measurements:

Our Size	Sleeve length	Chest width	Length
X Small	62cm	54cm	67cm
Small	63cm	57cm	68cm
Medium	64cm	60cm	69cm
Large	64cm	62.5cm	70cm
X Large	65cm	65cm	71cm



Full Length Fleece

Size Conversion Chart:

Our Size	Womens UK Size	Mens UK Chest
X Small	6-8	36"
Small	8-10	38"
Medium	10-12	40"
Large	12-14	44"
X Large	16-18	48"

HOW TO MEASURE:

A - Sleeve Length:

This is measured from the shoulder seam to the end of the cuff.

B - Chest Width:

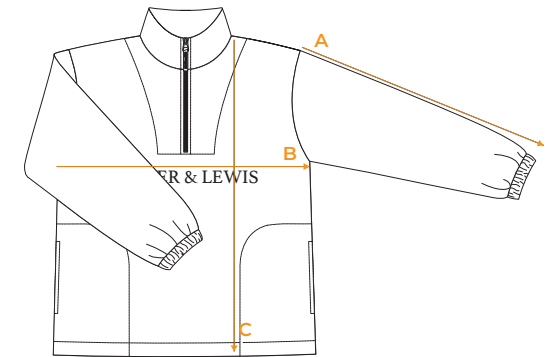
This is measured flat from seam to seam at the underarm.

C - Length:

Measured from the side of the neck to the bottom edge of the garment

Garment Measurements:

Our Size	Sleeve length	Chest width	Length
X Small	59cm	54cm	69cm
Small	60cm	56cm	71cm
Medium	61cm	60cm	73cm
Large	61cm	62cm	73cm
X Large	64cm	66cm	76cm



Cropped Fleece

Size Conversion Chart:

Our Size	Womens UK Size	Mens UK Chest
X Small	6-8	36"
Small	8-10	38"
Medium	10-12	40"
Large	12-14	44"
X Large	16-18	48"

HOW TO MEASURE:

A - Sleeve Length:

This is measured from the shoulder seam to the end of the cuff.

B - Chest Width:

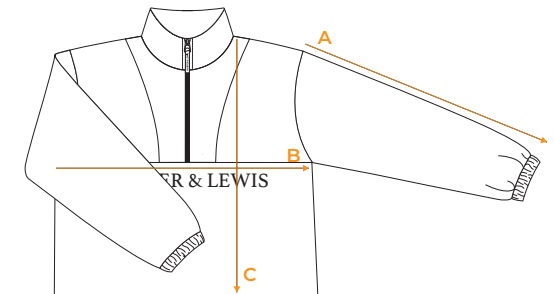
This is measured flat from seam to seam at the underarm.

C - Length:

Measured from the side of the neck to the bottom edge of the garment

Garment Measurements:

Our Size	Sleeve length	Chest width	Length
X Small	59cm	54cm	48cm
Small	60cm	56cm	49cm
Medium	61cm	60cm	50cm
Large	61cm	62cm	51cm
X Large	64cm	66cm	52cm



Sweatshirt

Size Conversion Chart:

Our Size	Womens UK Size	Mens UK Chest
X Small	6-8	32"
Small	8-10	36"
Medium	10-12	40"
Large	12-14	44"
X Large	16-18	48"

HOW TO MEASURE:

A - Sleeve Length:

This is measured from the shoulder seam to the end of the cuff.

B - Chest Width:

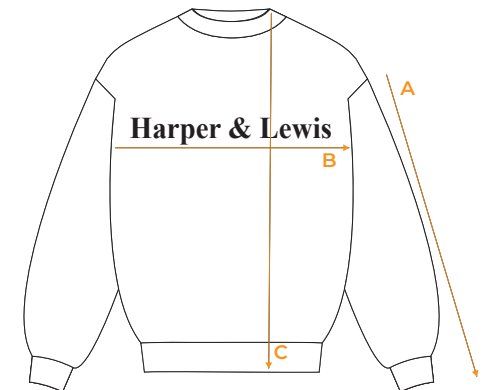
This is measured flat from seam to seam at the underarm.

C - Length:

Measured from the side of the neck to the bottom edge of the garment

Garment Measurements:

Our Size	Sleeve length	Chest width	Length
X Small	65cm	46cm	63cm
Small	66cm	50cm	64cm
Medium	66cm	55cm	65cm
Large	67cm	60cm	67cm
X Large	67cm	64cm	68cm



Hoodie

Size Conversion Chart:

Our Size	Womens UK Size	Mens UK Chest
X Small	6-8	32"
Small	8-10	36"
Medium	10-12	40"
Large	12-14	44"
X Large	16-18	48"

HOW TO MEASURE:

A - Sleeve Length:

This is measured from the shoulder seam to the end of the cuff.

B - Chest Width:

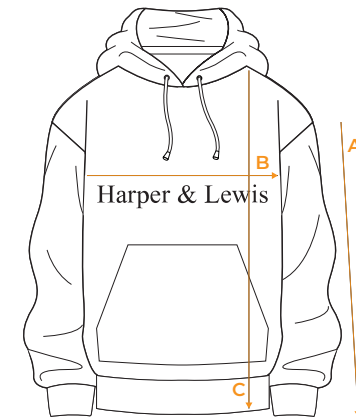
This is measured flat from seam to seam at the underarm.

C - Length:

Measured from the side of the neck to the bottom edge of the garment

Garment Measurements:

Our Size	Sleeve length	Chest width	Length
X Small	65cm	46cm	63cm
Small	66cm	50cm	64cm
Medium	66cm	55cm	64cm
Large	67cm	60cm	67cm
X Large	67cm	64cm	68cm



Sweatpants

Size Conversion Chart:

Our Size	Womens UK Size	Mens UK Waist
X Small	6-8	30"
Small	8-10	32"
Medium	10-12	34"
Large	12-14	36"
X Large	16-18	38"

HOW TO MEASURE:

A - Waist:

This is measured at the top of the waistband from one side to the other.

B - Thigh Width:

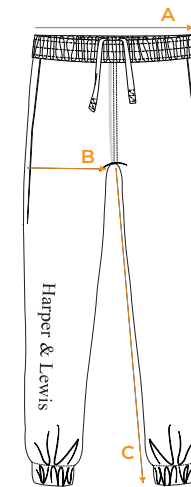
This is measured flat from edge to edge at the crotch

C - Length:

Measured at the inside leg from the crotch to the ankle.

Garment Measurements:

Our Size	Waist	Thigh Width	Length
X Small	27cm	29cm	75.5cm
Small	29.5cm	31cm	76cm
Medium	32cm	32cm	77.5cm
Large	34.5cm	33cm	78cm
X Large	37cm	34cm	78.5cm



Leggings

Size Conversion Chart:

Our Size	Womens UK Size
X Small	6-8
Small	8-10
Medium	10-12
Large	12-14
X Large	16-18

HOW TO MEASURE:

A - Waist:

This is measured at the top of the waistband from one side to the other.

B - Thigh Width:

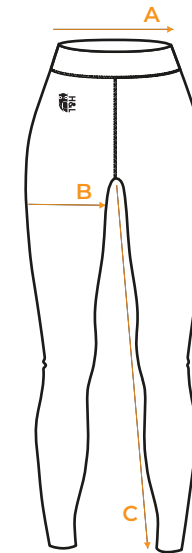
This is measured flat from edge to edge at the crotch

C - Length:

Measured at the inside leg from the crotch to the ankle.

Garment Measurements:

Our Size	Waist	Thigh Width	Length
X Small	30cm	18.5cm	59cm
Small	32.5cm	19.5cm	60cm
Medium	35cm	20.5cm	61cm
Large	37.5cm	21.5cm	62cm
X Large	40cm	22.5cm	62cm



Overshirt

Size Conversion Chart:

Our Size	Womens UK Size	Mens UK Chest
X Small	6-8	36"
Small	8-10	38"
Medium	10-12	40"
Large	12-14	44"
X Large	16-18	48"

HOW TO MEASURE:

A - Sleeve Length:

This is measured from the shoulder seam to the end of the cuff.

B - Chest Width:

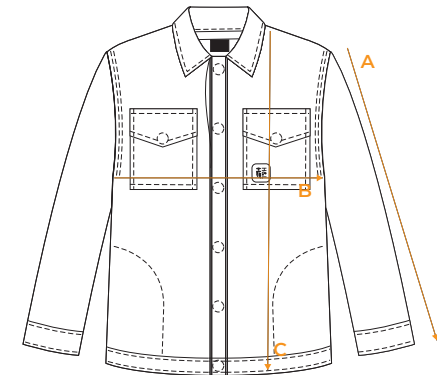
This is measured flat from seam to seam at the underarm.

C - Length:

Measured from the side of the neck to the bottom edge of the garment

Garment Measurements:

Our Size	Sleeve length	Chest width	Length
X Small	59cm	48cm	70cm
Small	59cm	50.5cm	71cm
Medium	59.5cm	53cm	72cm
Large	60cm	55.5cm	73cm
X Large	60.5cm	58cm	74cm



Rugby Shirt

Size Conversion Chart:

Our Size	Womens UK Size	Mens UK Chest
X Small	6-8	32"
Small	8-10	36"
Medium	10-12	40"
Large	12-14	44"
X Large	16-18	48"

HOW TO MEASURE:

A - Sleeve Length:

This is measured from the shoulder seam to the end of the cuff.

B - Chest Width:

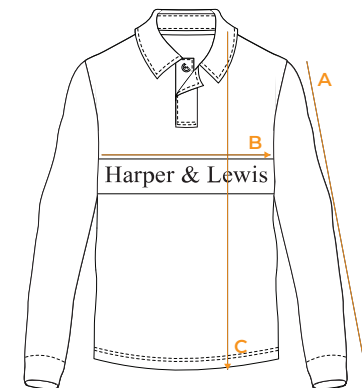
This is measured flat from seam to seam at the underarm.

C - Length:

Measured from the side of the neck to the bottom edge of the garment

Garment Measurements:

Our Size	Sleeve length	Chest width	Length
X Small	50cm	48cm	69cm
Small	51cm	50cm	71cm
Medium	52cm	52cm	73cm
Large	53cm	57cm	75cm
X Large	54cm	62cm	77cm



Shorts

Size Conversion Chart:

Our Size	Womens UK Size	Mens UK Waist
Small	8-10	32"
Medium	10-12	34"
Large	12-14	36"
X Large	16-18	38"

HOW TO MEASURE:

A - Waist:

This is measured at the top of the waistband from one side to the other.

B - Thigh Width:

This is measured flat from edge to edge at the crotch

C - Length:

Measured at the inside leg from the crotch to the ankle.

Garment Measurements:

Our Size	Waist	Thigh Width	Length
Small	31.5cm	29cm	23cm
Medium	34cm	30cm	24cm
Large	36.5cm	31cm	24cm
X Large	39cm	32cm	25cm

