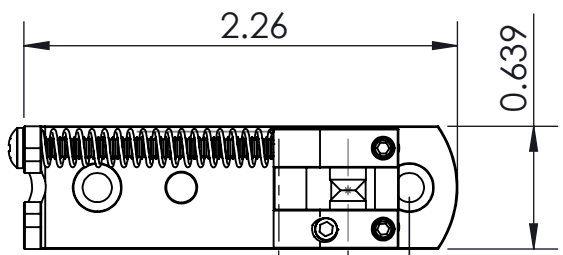
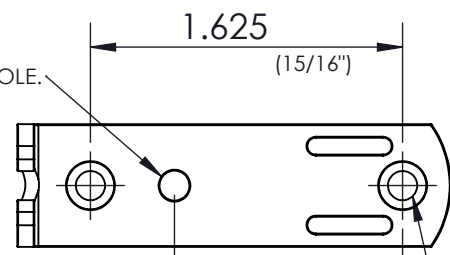


1 2 3 4 5 6

A

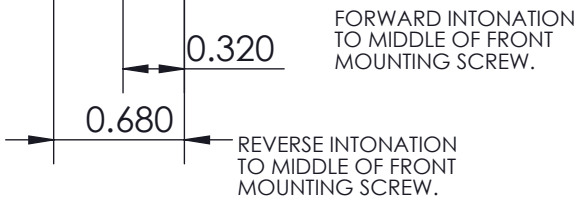


USE 5/32" DRILL FOR STRING THRU HOLE.



USE 3/32" PILOT DRILL (2 PLACES) LARGER DRILL MAY BE NEEDED FOR HARDWOOD.

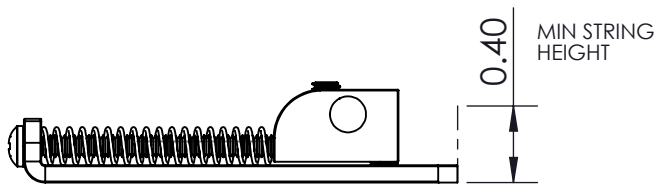
B



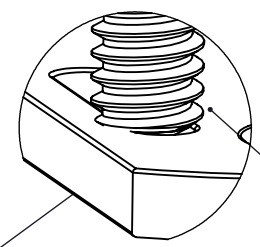
FORWARD INTONATION TO MIDDLE OF FRONT MOUNTING SCREW.

REVERSE INTONATION TO MIDDLE OF FRONT MOUNTING SCREW.

C

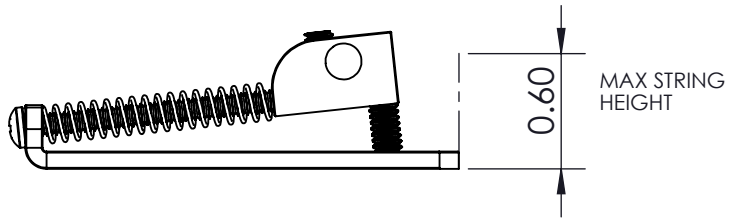


MIN STRING HEIGHT

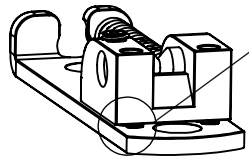


HEIGHT SCREW RESTS ON THE LIP OF THE GUIDE SLOT WITHOUT PASSING THROUGH

D



MAX STRING HEIGHT



THIS DRAWING IS THE SOLE PROPERTY OF HIPSHOT PRODUCTS, INC. ALL RIGHTS ARE RESERVED. DIMENSIONS AND PRODUCT FEATURES ARE SUBJECT TO CHANGE WITHOUT NOTICE.

UNLESS OTHERWISE SPECIFIED: DIMENSIONS ARE IN INCHES TOLERANCE: ± .005

IMAGE NOT DRAWN TO SCALE



8248 STATE ROUTE 96  
Interlaken, NY 14847 U.S.A.  
TEL: 607-532-9404 FAX: 607-532-9530  
E-MAIL: info@HipshotProducts.com

WEIGHT (WITH MOUNTING HARDWARE): 1.152 oz

SOLO Single String Bass Bridge

1 2 3