



MATERIAL TEST REPORT – Acrylic

PRODUCT - Ice Cube Clear and Ice Nuggets

Test Report

No. SHAEC1424663220

Date: 30 Dec 2014

Page 1 of 5

The following sample(s) was/were submitted and identified on behalf of the clients as : PMMA pellet

SGS Job No. : SP14-038204 - SH

Model No. : CM-211

Composition : PMMA

Date of Sample Received : 26 Dec 2014

Testing Period : 26 Dec 2014 - 29 Dec 2014

Test Requested : Selected test(s) as requested by client.

Test Method : Please refer to next page(s).

Test Results : Please refer to next page(s).

Conclusion : Based on the performed tests on submitted sample(s), the results of Lead, Mercury, Cadmium, Hexavalent chromium, Polybrominated biphenyls (PBBs), Polybrominated diphenyl ethers (PBDEs) comply with the limits as set by RoHS Directive 2011/65/EU Annex II; recasting 2002/95/EC.

Snow Business

The Snow Mill, Bridge Road, Ebley, Stroud,

Glos, GL5 4TR Tel: +44 (0) 1453 840088

www.snowbusiness.com

Reg in England, Co # 3188135. VAT # GB618344930





Test Results :

Test Part Description :

Specimen No.	SGS Sample ID	Description
SN1	SHA14-246632.020	Transparent plastic pellet

Remarks :

- (1) 1 mg/kg = 1 ppm = 0.0001%
- (2) MDL = Method Detection Limit
- (3) ND = Not Detected (< MDL)
- (4) "-" = Not Regulated

RoHS Directive 2011/65/EU

- Test Method :
- (1) With reference to IEC 62321-5:2013, determination of Cadmium by ICP-OES.
 - (2) With reference to IEC 62321-5:2013, determination of Lead by ICP-OES.
 - (3) With reference to IEC 62321-4:2013, determination of Mercury by ICP-OES.
 - (4) With reference to IEC 62321:2008, determination of Hexavalent Chromium by Colorimetric Method using UV-Vis.
 - (5) With reference to IEC 62321:2008, determination of PBBs and PBDEs by GC-MS.

Snow Business

The Snow Mill, Bridge Road, Ebley, Stroud,

Glos, GL5 4TR Tel: +44 (0) 1453 840088

www.snowbusiness.com

Reg in England, Co # 3188135. VAT # GB618344930



<u>Test Item(s)</u>	<u>Limit</u>	<u>Unit</u>	<u>MDL</u>	<u>020</u>
Cadmium (Cd)	100	mg/kg	2	ND
Lead (Pb)	1000	mg/kg	2	ND
Mercury (Hg)	1000	mg/kg	2	ND
Hexavalent Chromium (Cr(VI))	1000	mg/kg	2	ND
Sum of PBBs	1000	mg/kg	-	ND
Monobromobiphenyl	-	mg/kg	5	ND
Dibromobiphenyl	-	mg/kg	5	ND
Tribromobiphenyl	-	mg/kg	5	ND
Tetrabromobiphenyl	-	mg/kg	5	ND
Pentabromobiphenyl	-	mg/kg	5	ND
Hexabromobiphenyl	-	mg/kg	5	ND
Heptabromobiphenyl	-	mg/kg	5	ND
Octabromobiphenyl	-	mg/kg	5	ND
Nonabromobiphenyl	-	mg/kg	5	ND
Decabromobiphenyl	-	mg/kg	5	ND
Sum of PBDEs	1000	mg/kg	-	ND
Monobromodiphenyl ether	-	mg/kg	5	ND
Dibromodiphenyl ether	-	mg/kg	5	ND
Tribromodiphenyl ether	-	mg/kg	5	ND
Tetrabromodiphenyl ether	-	mg/kg	5	ND
Pentabromodiphenyl ether	-	mg/kg	5	ND
Hexabromodiphenyl ether	-	mg/kg	5	ND
Heptabromodiphenyl ether	-	mg/kg	5	ND
Octabromodiphenyl ether	-	mg/kg	5	ND
Nonabromodiphenyl ether	-	mg/kg	5	ND
Decabromodiphenyl ether	-	mg/kg	5	ND

Notes :

(1) The maximum permissible limit is quoted from directive 2011/65/EU, Annex II

Snow Business

The Snow Mill, Bridge Road, Ebley, Stroud,

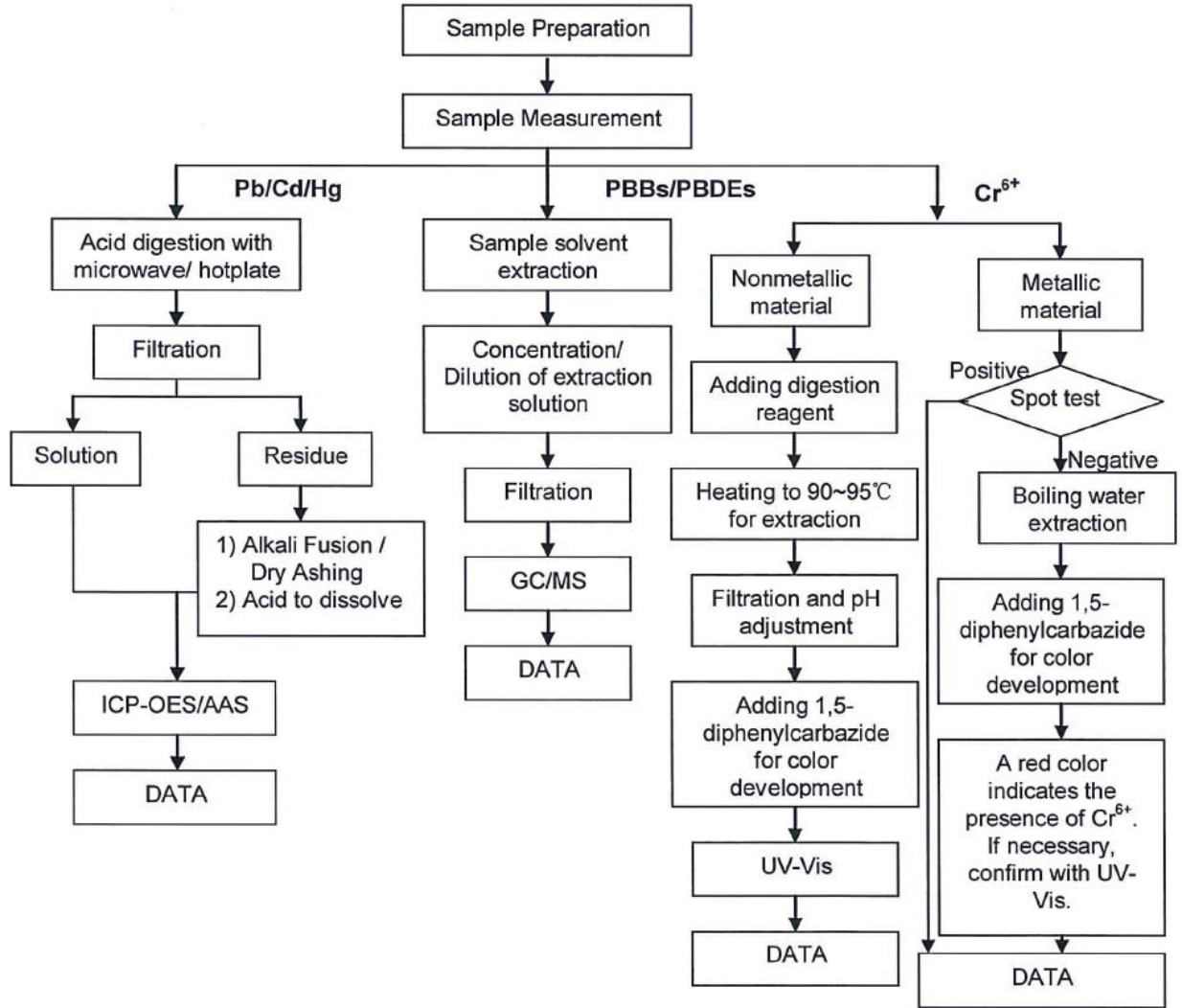
Glos, GL5 4TR Tel: +44 (0) 1453 840088

www.snowbusiness.com

Reg in England, Co # 3188135. VAT # GB618344930

ATTACHMENTS

RoHS Testing Flow Chart

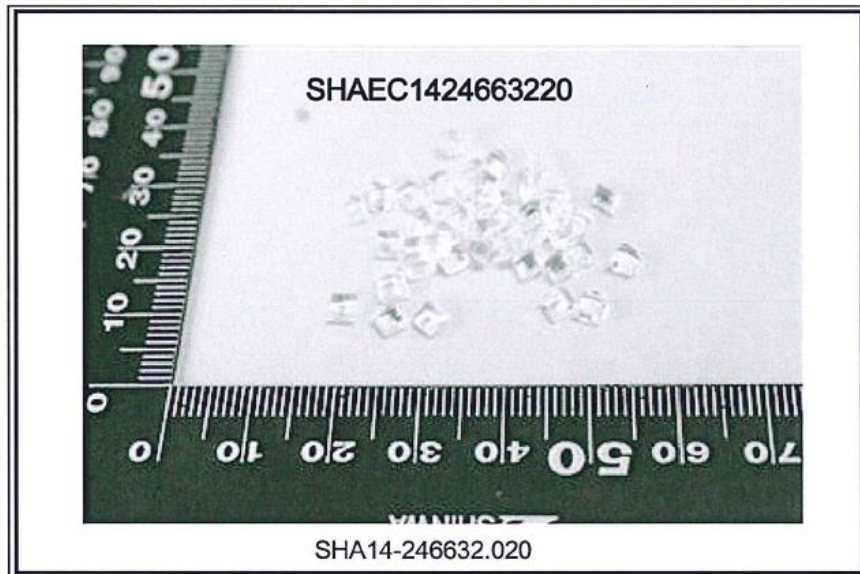


Snow Business

The Snow Mill, Bridge Road, Ebley, Stroud,
Glos, GL5 4TR Tel: +44 (0) 1453 840088
www.snowbusiness.com

Reg in England, Co # 3188135. VAT # GB618344930

Sample photo:



Test Date: 30 December 2014

Reviewed S Doliczny 14 June 2016

The statements in this bulletin were made to the best of our knowledge and are as accurate as possible. They are given for information only. They do not constitute a contractual guarantee of a product's properties. They must neither be altered nor transferred to other products.

Snow Business

The Snow Mill, Bridge Road, Ebley, Stroud,

Glos, GL5 4TR Tel: +44 (0) 1453 840088

www.snowbusiness.com

Reg in England, Co # 3188135. VAT # GB618344930