



DIAMONDBACK

DiamondBackCovers.com / 800 935 4002

BED RAIL CAP SHIMS

on '20-up Jeep Gladiator

INSTALLATION GUIDE

MISC-20

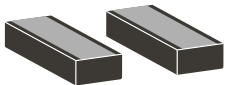
45 minutes
Normal install time

Keep an eye out for these icons:

! IMPORTANT!
Important installation information

★ Helpful Hints
Tips to assist installation

PARTS INCLUDED:



Shims
(8, including 2 extras)

TOOLS REQUIRED:



Ratchet
Wrench



8 mm
Socket



Butter
Knife



Pliers



Soap & Water



Rubbing
Alcohol



Clean, Lint-
Free Cloth

WANT TO SAVE TIME?

It's a slog to remove your bed rail caps without breaking some of their retaining clips. Each cap does have enough clips that breaking a few of them won't compromise the caps' reinstallation. But if you wish to expedite the shims installation, consider proactively buying replacement bed rail caps (Mopar 68343262AB & 68343263AB at ~\$20/ea) to allow for faster, rougher removal of the existing caps than described below.

WHY SHIMS?

Without these shims, clamp-mounting your cover may deform your bed rail caps, which in turn may compromise the cover's weather seal.

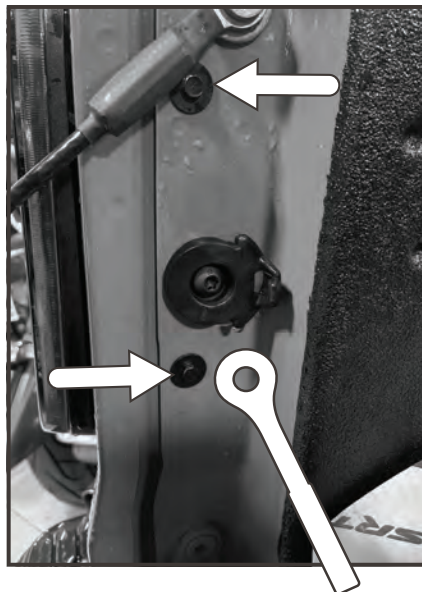
REMOVE BED RAIL CAPS

! To ensure the shims stick, make sure the surface temperature of your Gladiator's bed rails is at least 50°F and will remain so for at least a day.



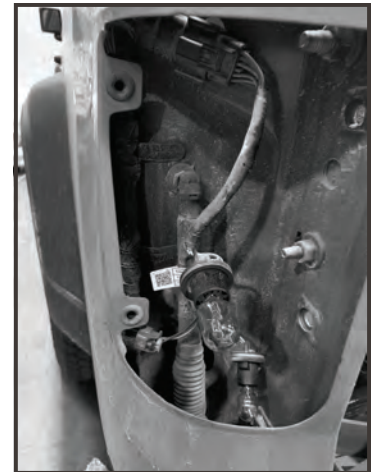
1 Open the tailgate.

2 On the driver side, remove the two taillight mounting screws using an 8 mm socket. Set aside for now.



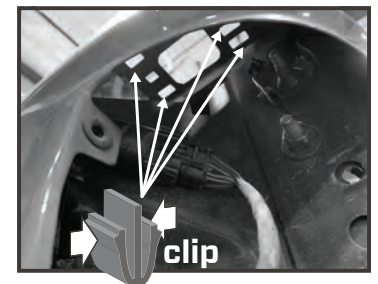
3 Remove the taillight by pulling it straight tailward until its retention tabs are released.

4 Disconnect and remove the taillight.



5 Inside the taillight recess, release the four bed-rail-cap retaining clips by pinching their tabs while pushing up on the bed rail cap.

! It's easy to break the retaining clips. Be careful.



6 Locate the rest of cap's retaining clips underneath the main length of the bed rail.

7 From outside the bed, insert a butter knife under the cap in line with the rearmost of these clips.



8 Use the knife's tip to push the outboard wing of the outboard clip inward and pry the cap upward until the wing passes up through its hole.

9 Maintain upward pressure on the cap with your left hand as you approach the outboard clip's inboard wing with the knife parallel to the rail in your right hand.

10 Use the knife's spine to push the inboard wing of the outboard clip toward the clip's center shaft and pull the cap upward until the wing passes through its hole.

11 Reach around and under the bed rail lip, squeeze both wings of the inboard clip, and pull up the cap upward until the inboard clip passes through its hole.



12 Repeat steps 7-11 for each pair of retaining clips, working from tail to cab.

★ Not every outboard clip is paired with an inboard clip. Naturally, skip repeating step 11 in those cases.

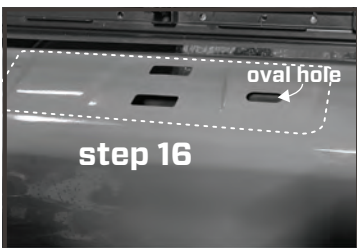
13 Remove the bed rail cap, using pliers to break the final, flat, white retaining piece at front. Set the cap aside for now.

14 Repeat steps 1-13 on the passenger side (with the knife in your left hand).

AFFIX SHIMS & REINSTALL CAPS

15 Clean the tops of both bed rails thoroughly. Allow to dry.

16 Find the oval location pin hole on the bed rail above the rear wheels. (It's the only oval hole in this area. It's slightly behind the center line of the rear axle.) Prep the flat area around this hole, the depression just rearward of it of with the two rectangular holes, and the next flat area behind that for shim adhesion by wiping them down with rubbing alcohol. Allow to dry.



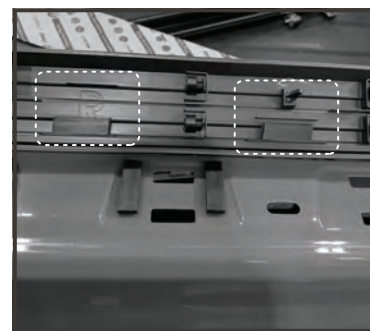
17 In each of the prepped trapezoidal hollows, affix two shims perpendicular to the rail: one as far toward the cab as it'll go and one as far toward the tail as it'll go.



★ Another way of stating these shims' correct orientation: Align one corner of the shim with each inboard corner of the trapezoids.

! Don't align the shims with the angled sides of the hollows. Keep them at a right angle to the rails.

18 Affix two shims to the underside of each bed rail cap along its inboard wall parallel to its length, one against the thin support ridge nearest the bottom for the letter "L" or "R" and one against the ridge in line with the location pin.



★ To clarify shim position, all shims should end up under the center panel of your DiamondBack cover.

19 Reinstall each bed rail cap by snapping its clips back into their holes, working from cab to tail.



20 Reinstall the taillight. Secure it with its mounting screws.