



# DIAMONDBACK

DiamondBackCovers.com / 800 935 4002

'19-up Ford Ranger



# INSTALLATION GUIDE

CVR-6

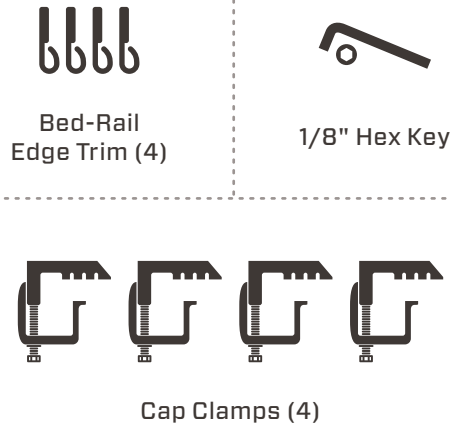
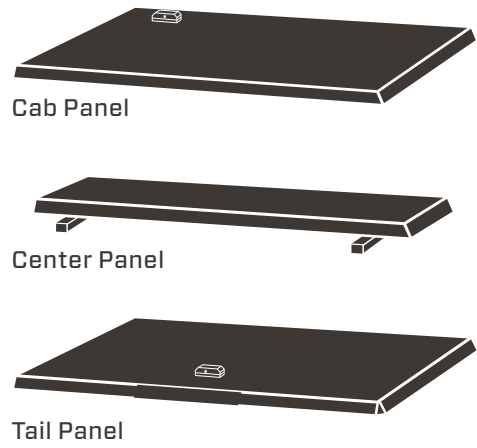
**45 minutes**  
Normal install time

Keep an eye out for these icons:

**IMPORTANT!**  
Important installation information

**Helpful Hints**  
Tips to assist installation

## PARTS INCLUDED:



## TOOLS REQUIRED:



## PRE-INSTALLATION NOTES:

If you're installing a **cab guard** or **headache rack**, mount it prior to mounting the cover. Refer to its installation guide for details.

Affix the included **bulkhead weatherstrip** to the bulkhead before beginning. Refer its installation guide for details.

It's possible for one person to install a the cover solo, but the whole process is much easier with two people.

## MOUNT THE PANELS

**1** Place the **center panel** across the center of the bed, cheated slightly toward the tailgate.

**!** Since the cover is slightly tapered, make sure the arrow sticker on the underside of the center panel is pointing toward the tailgate.

**2** Loosely affix the center panel to the truck by finger-tightening a **cap clamp** at each of the four interior corners of the underside of the center panel.

**3** Attach the **tail panel** by angling it 90° from the bed rails, sliding its driver-side, loop-shaped hinge knuckle fully onto the corresponding center-panel hinge pin, then dropping its passenger-side, C-shaped hinge knuckle fully onto its corresponding pin.

**4** Lower the tail panel into the closed position.

**!** To avoid hinge damage, make sure the drop-on hinge is fully mated before beginning to close the panel.

**5** Repeat steps 3-4 for the **cab panel**, starting this time with the loop-shaped hinge knuckle on the passenger side.

**6** Position the cover front to back so that the leading edge of the closed cab panel lines up with the outside edge of the center of the bulkhead.

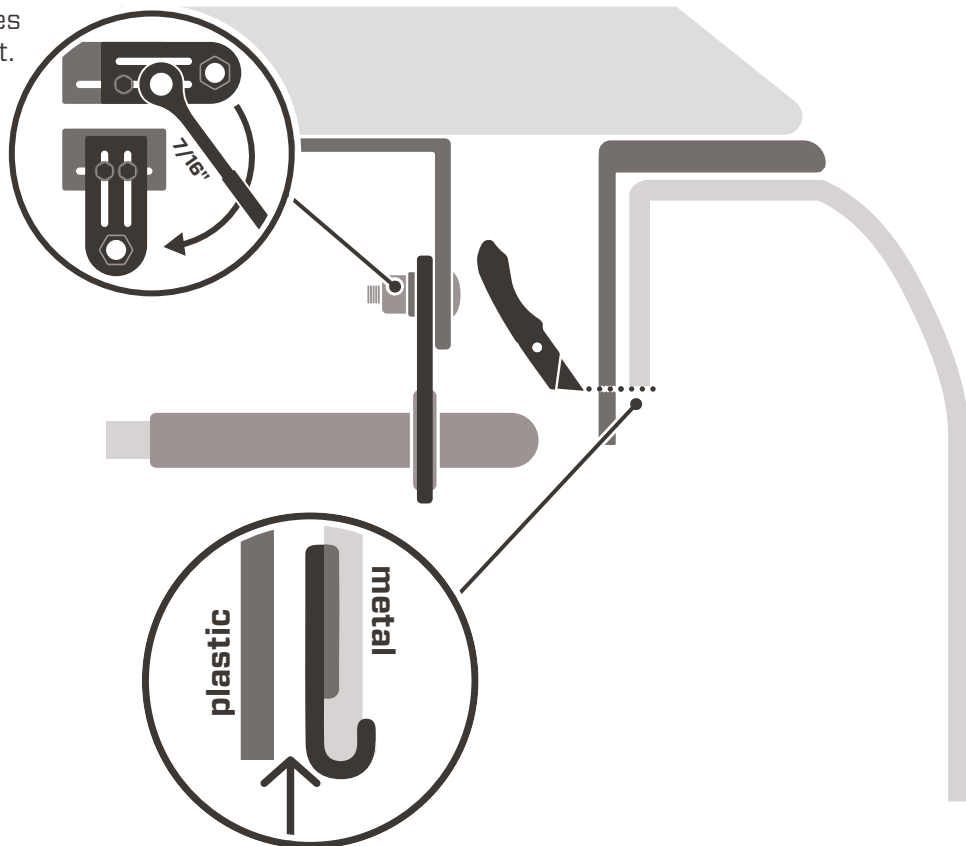
**7** Center the cover side to side on the truck.

**8** Tighten the cap clamps with a 9/16" socket.

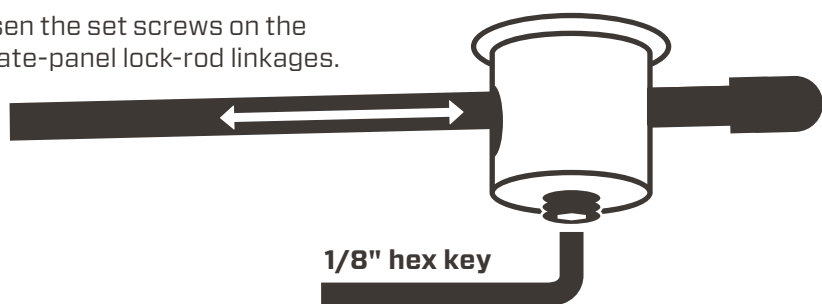
**!** Road vibration can loosen your clamps. Retighten them after 100 miles. Check them every time you haul on top.

## PREP FOR THE LOCK RODS

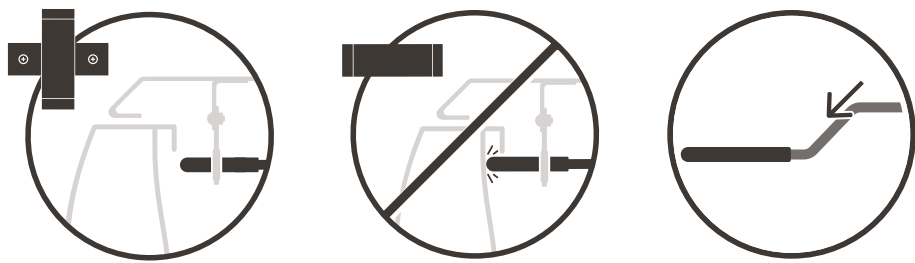
- 9 If a DiamondBack HD, unpin each of the four lock-rod guide-bracket slide plates by using a 7/16" socket to move one of its bolts to the second, unoccupied slot.
  - 10 If plastic extends beyond the bottom of the vertical face of the metal bed rails, trim a two-inch length of it flush with the bed rail's bottom edge at each of the four points where a lock rod will pass under the rails.
  - 11 Peel the red adhesive backing from the edge trim pieces. Affix them to the metal bed rail at the four points where a rod will pass underneath, the bottom curl of their 'j's touching the bottom edge of the rail.
- ! Affix the edge trim to the painted metal only, *behind* the plastic bed liner or bed rail cap, if present.
  - ★ You may need to pull the plastic bed rail cap away from the metal bed rail to provide enough clearance to get the edge trim on.
  - ★ Using a tool to widen the curl of the 'j' can make this step easier.

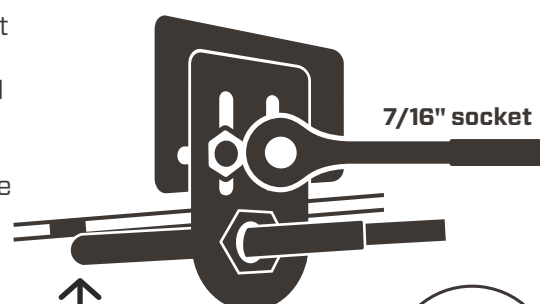


## ADJUST THE LOCK RODS

- 12 Loosen the set screws on the tailgate-panel lock-rod linkages.
 

- 13 Adjust the lock rods and retighten their set screws so that
  - A. with the lock handle in the open position, the rod tips clear the bed rails,
  - B. with the handle in the closed position, the rod tips do not strike the bed walls, and
  - C. the first bend in the rods points downward.



- 14 Position the lock rods tight against the underside of the bed rails so that they'll draw the panels down and compress the weatherstrip. Tighten the rod guide brackets with a 7/16" socket.
 

- ! For best weather protection, have a second person press down on the cover while you adjust the lock rods.
- ★ Using the access panels is easiest when you press down as you open or close them.

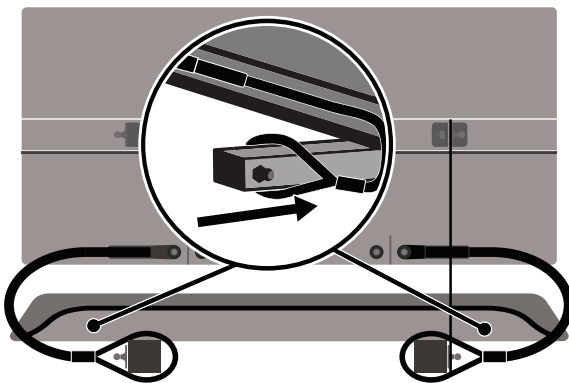
- 15 Repeat steps 12 through 14 for the cab panel.

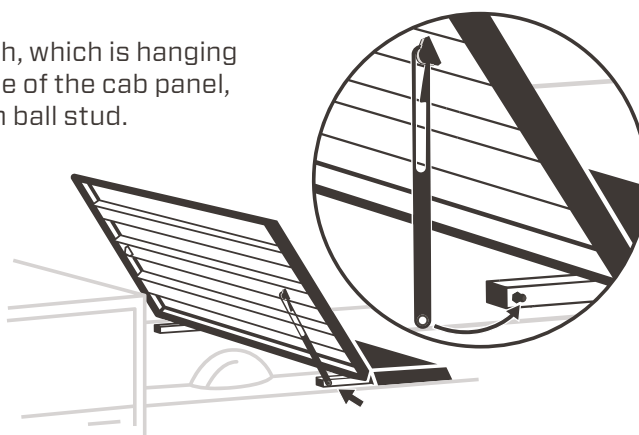
- ★ Your panels should be hard to operate at first. After finishing install below, leave the panels closed as much as possible for 3-4 days to break in the weatherstrip. After that period, you should find that the panels open and close without difficulty.

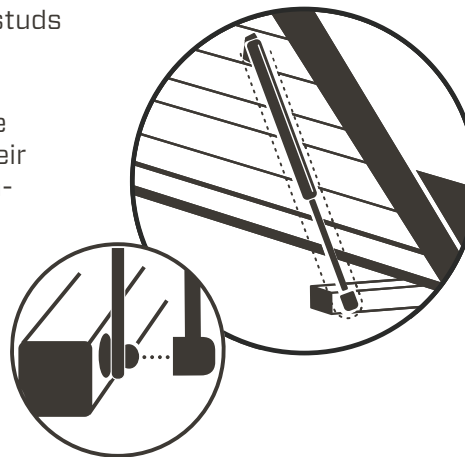
- ★ If you are also installing a **Cross Bin**, do so now. Refer to the **Cross Bin Installation Guide** for details.

## ATTACH THE SAFETY CATCH & GAS SPRINGS

- 16 Open the cab panel. Have a second person support it in the open position.

- 17 Slip the looped ends of the cable tethers that are attached to the underside of the cab panel around the center-panel ball stud arms, well past the ball studs.
 

- 18 Fit the safety catch, which is hanging from the driver side of the cab panel, around the bottom ball stud.
 

- 19 Attach a **gas spring** to the ball studs alongside the safety catch.
 

- ★ If some of your gas springs have heavier poundage printed on their sides than others, use the stronger ones on the cab panel.

- ! To avoid premature failure of your gas springs, attach them barrel up, shaft down.

- 20 Attach the three remaining gas springs (barrel up, shaft down).

- 21 Leave the cover closed and locked for 24 hours to allow the weatherstrip adhesive, which is pressure-sensitive, to fully cure.

 **24 hours**  
Adhesive cure time