

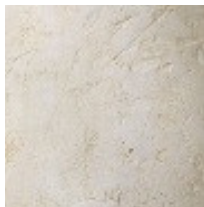
# Natal Floor Lamp

Copyright © 2024 Bofred (Pty) Ltd



Sand-Cement

Bone



THE NATAL FLOOR LAMP IS A SCULPTURAL PIECE INSPIRED BY THE NATAL CYCAD. ITS BASE IS CRAFTED FROM A SAND AND CEMENT COMPOSITE IN COLLABORATION WITH ARTIST FERDINAND KIDD, COMPLEMENTED BY A FABRIC LAMPSHADE.

## Product Dimensions

17.7" (W) x 17.7" (D) x 59" (H)

Weight: 22 lb - Base: 17.6 lb Shade: 4.4 lb (This product ships in two parts)

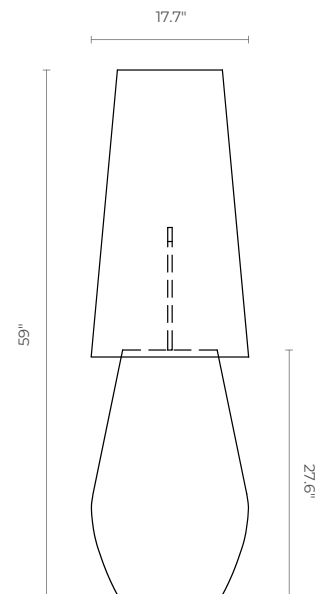
118" White cord with footswitch and plug included.

Lightbulb not included - Recommended: E27 Fitting / LED 3W / Warm White

## Material Shown

Base: Sand-Cement Composite

Shade: Bone Fabric



*Each casting is manufactured in small batches. Slight variations will occur.*

*Note: Lamps are manufactured and approved to meet the safety standards for use with 230 v electrical outlets (standard in Europe/Africa/Australasia). We are not able to adjust the wiring for US outlets - lamp will need rewiring.*

BOFRED

# Natal Floor Lamp

Copyright © 2024 Bofred (Pty) Ltd

Materials Shown: Sand-Cement Composite Base with a Bone Fabric Shade



*Colours and weight of natural materials will vary.*

BOFRED