

James Mudge



MINIMALIST SIDEBOARD

JAMES MUDGE FURNITURE STUDIO

James Mudge



SPECIFICATIONS :

oak grey oil | 2000 x 560 x 900mm high | (option B)

doors and drawers with antique brass fronts | birch ply drawer inners

with plinth base

James Mudge



SPECIFICATIONS :

iroko grey oil | 2000 x 560 x 900 mm high | (option B)

with timber doors and drawer fronts and birch ply inner

with the rounded-leg base

James Mudge



SPECIFICATIONS :

left: oak grey oil finish | optional filing drawer system

details of brass handles and traditional finger joint drawer detail

right: iroko grey oil finish | inner shelf at adjustable heights

James Mudge



SPECIFICATIONS :

oak dark charcoal finish & antique brass doors | custom size

rounded leg base | made with optional solid brass linear handles

extra length made with discreet central leg

James Mudge



SPECIFICATIONS :

iroko grey oil finish | 2000 x 560 x 900mm high | (option A)

with solid timber doors and ply interior shelves (adjustable heights)

with plinth base

James Mudge



SPECIFICATIONS :

oak grey oil | 2000 x 560 x 900 mm high | (option B)

with timber drawer fronts and birch ply inner

with plinth base

James Mudge



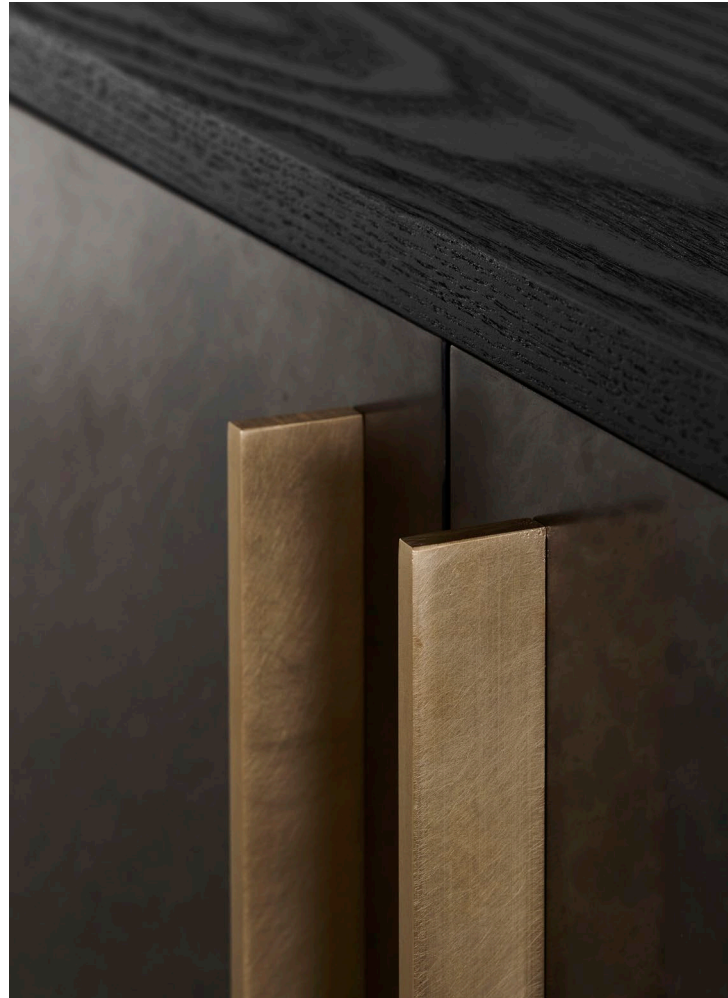
SPECIFICATIONS :

walnut clear oil finish | 2000 x 560 x 900mm high | custom-made

with solid walnut drawer fronts and birch ply drawer inners

on the plinth base | pictures with the Windsor chair in gunmetal

James Mudge



SPECIFICATIONS :

left: oak grey oil finish with antique brass door & drawer fronts

right: oak dark charcoal finish & optional solid brass linear handles

James Mudge



SPECIFICATIONS :

oak gunmetal | 1800 x 400 x 900mm high | custom-made

with solid timber drawer fronts and open shelves | birch ply backing

on a rounded-leg base

James Mudge

MINIMALIST SIDEBOARD :

The Minimalist Sideboard is a contemporary classic design offering ample storage. We make this piece in many different sizes and configurations giving diverse functionality for the dining room, bedroom, kitchen or office. It is available in various timber and finish options and can optionally be made with Brass fronts as an alternative to the timber drawers and doors. This design is suitable for indoor use only.

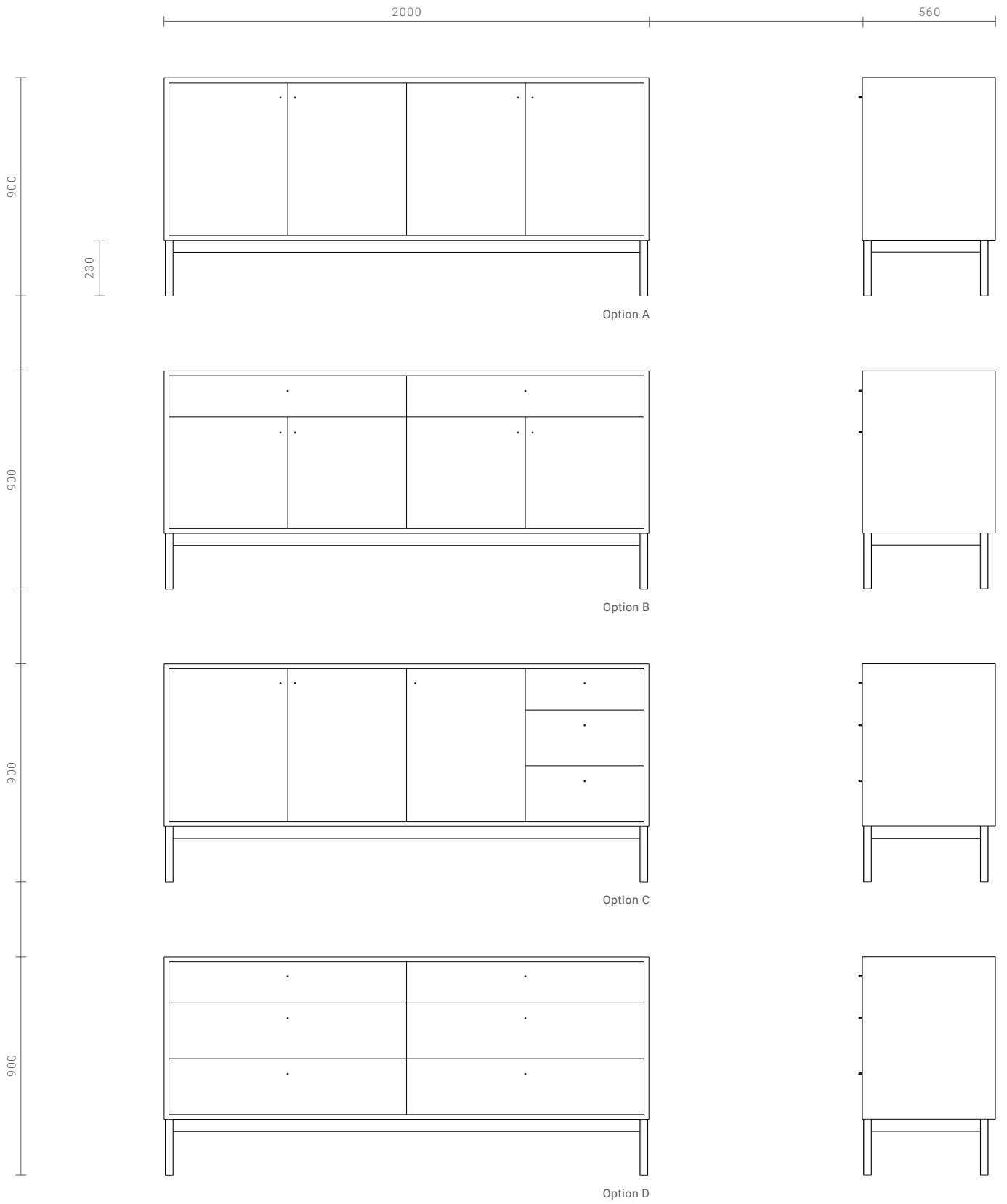
The Minimalist Sideboard is made with either a rounded-leg base or plinth base, as per the drawings below. This does not affect the price, but does change the number of drawers or storage available.

Please note that this design is intended to be placed against a wall and has a Birch Ply backing. Should you require a piece to stand in the middle of a room and be viewed from both sides please enquire for pricing variation.

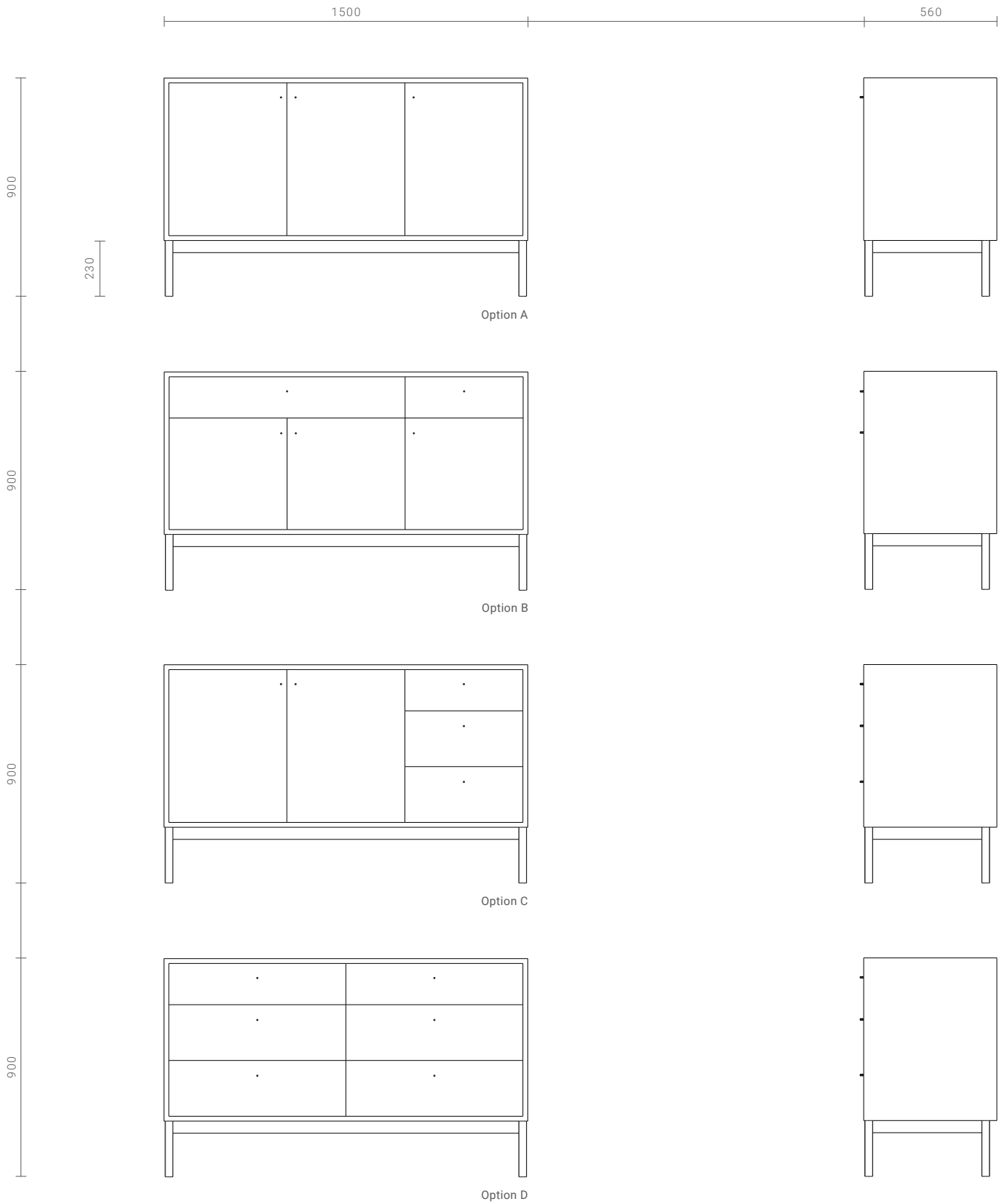
STANDARD SIZES :

Large	-	2000 x 560 x 900mm high
Medium	-	1500 x 560 x 900mm high
Small	-	1000 x 560 x 900mm high

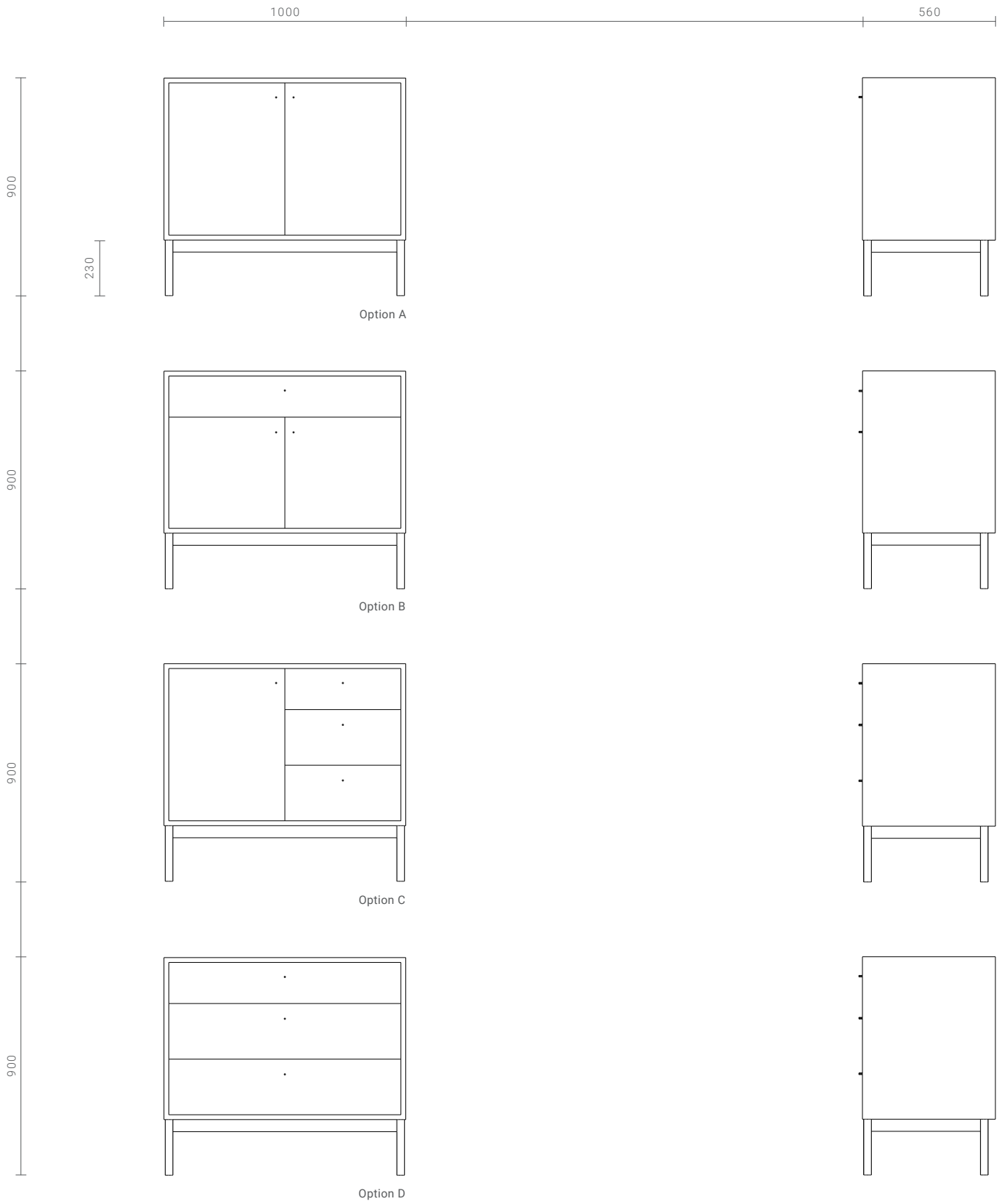
MINIMALIST SIDEBOARD - ROUNDED LEG BASE (L) :



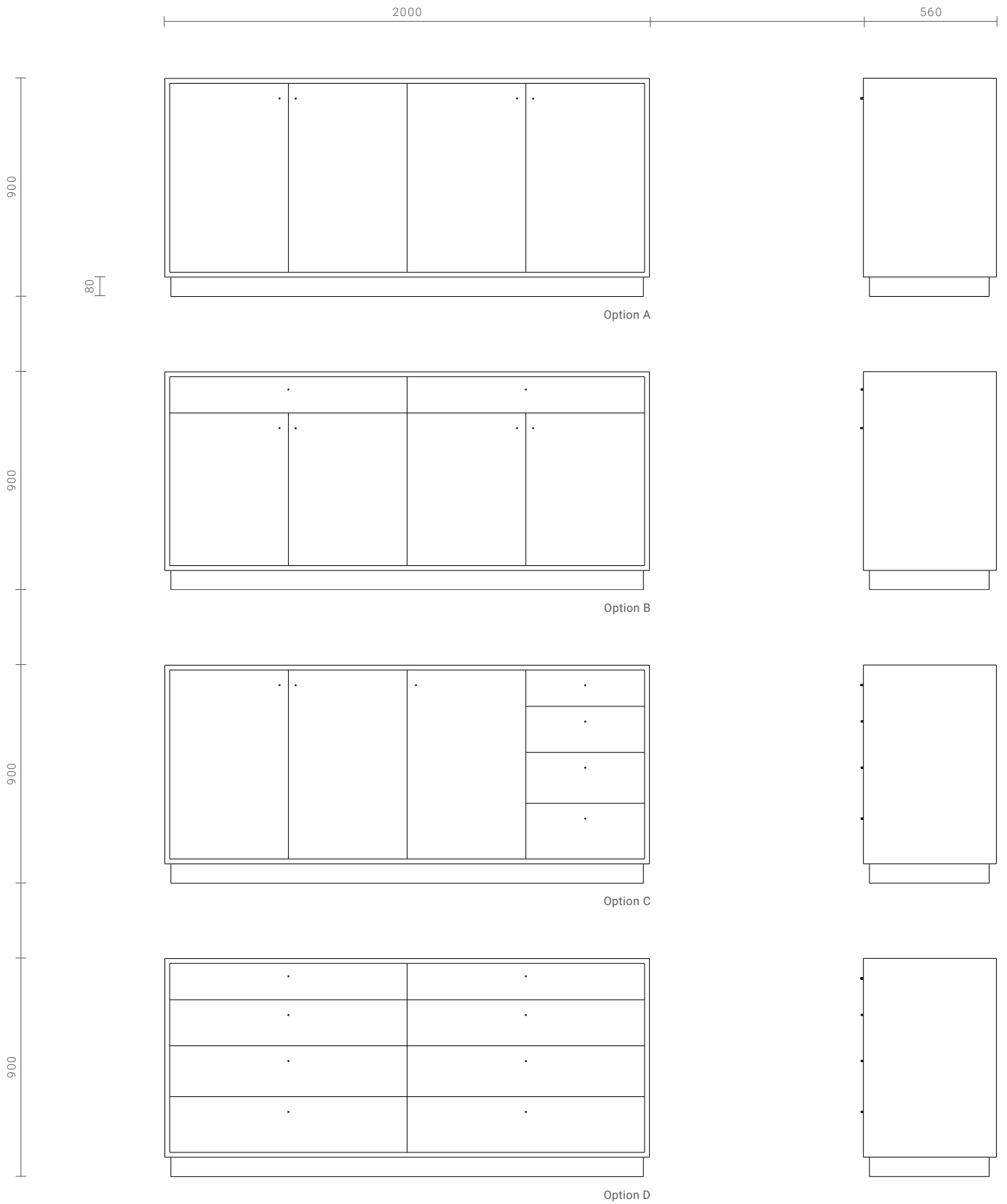
MINIMALIST SIDEBOARD - ROUNDED LEG BASE (M) :



MINIMALIST SIDEBOARD - ROUNDED LEG BASE (S) :



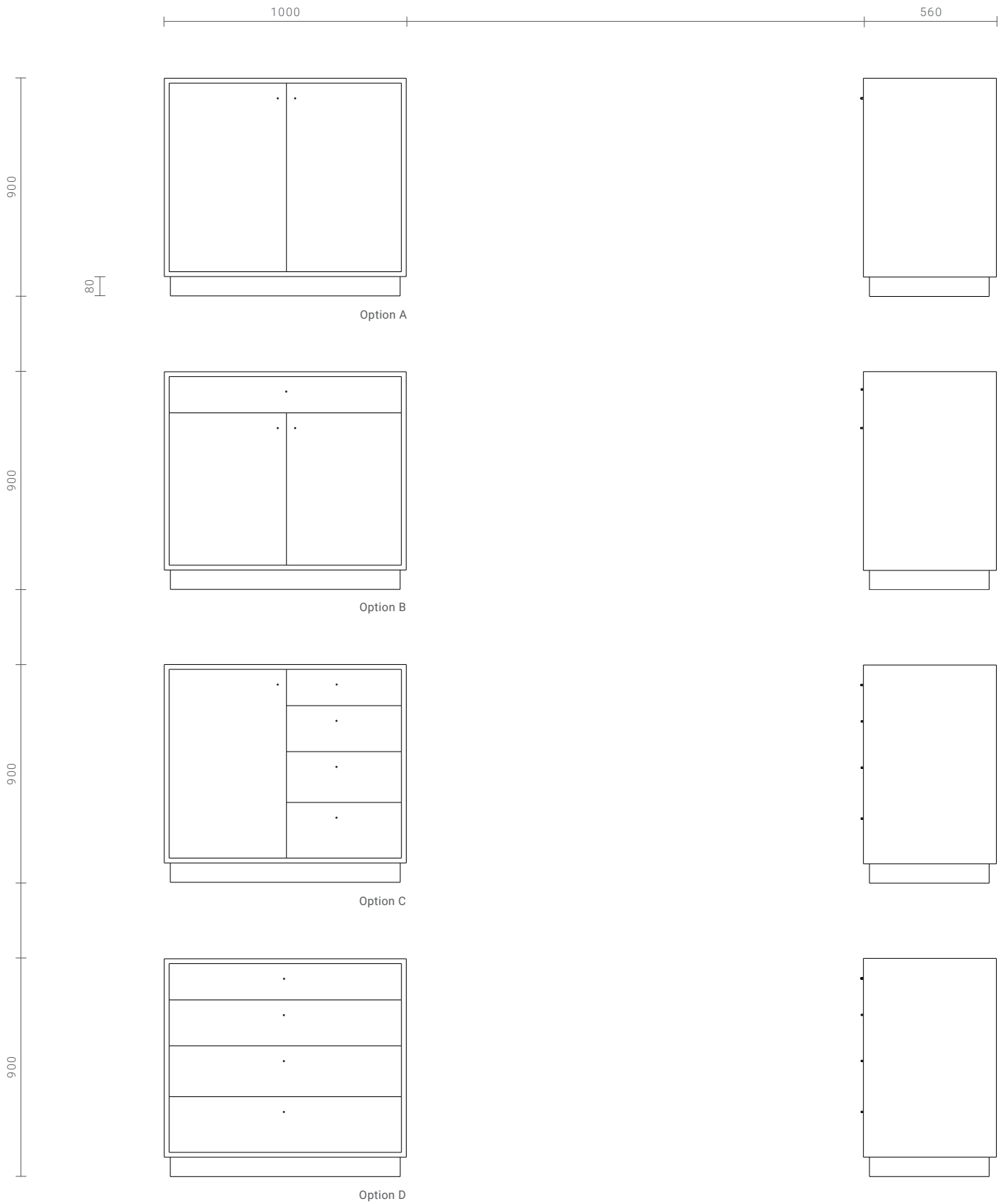
MINIMALIST SIDEBOARD - PLINTH BASE (L) :

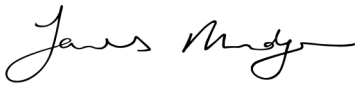


MINIMALIST SIDEBOARD - PLINTH BASE (M) :



MINIMALIST SIDEBOARD - PLINTH BASE (S) :





CARE INSTRUCTIONS - SOLID WOOD INDOOR FURNITURE :

you will need:

soft cloths / rags | water | soap

optional recommended soap: ProNature Plant Soap

DAILY CARE :

All the finishes we offer provide good protection to the timber. However, no finish can offer bullet-proof resistance to staining or scratches and your furniture will not be impervious to damage. But if you follow the instructions laid out below, it should be sufficient for normal, everyday use.

After use, wipe down the wood surfaces with a slightly damp soft cloth to preserve and protect the wood coating. Dry with another cloth if a lot of water remains. Do not expose these products for any extent of time to pools of water. If the products get wet you should dry them off as soon as possible. Most specifically oil, vinegar and fatty foods should be wiped up immediately using a mild solution of soapy water on a well-rung out damp cloth. Spills should not be left overnight as they will sink in and mark.

Never use Ammonia (ie Handy Andy) or oil/silicone based cleaners (ie Mr Min) on solid wood furniture as they will damage the finishes and can create cloudy marks.

Placing hot items on the wood may result in damage or burning. We recommend that you use coasters and trivets to protect the table tops from hot dishes.

We do not recommend that you place indoor furniture outdoors for any period of time. Outdoor furniture, even for covered outdoor areas, is specially designed to be able to withstand the dramatic temperature changes and moisture in the air. Exposing indoor furniture to outdoor environments could lead to warping, cracks, discolouration and ultimately will weaken the structural integrity of the design over time. Please enquire about our outdoor range if you are in need of outdoor or semi-outdoor furniture.

When used indoors, avoid placing solid wood furniture in full, everyday sun as exposure to sun/UV can cause yellowing, bleaching and light surface cracks.

Heavily airconditioned environments require the use of an humidifier to restore the natural humidity of the air, as extremely dry air will result in cracking / warping of the timber. This is also the case with central heating in cold climate countries.

MAINTENANCE :

When properly taken care of, your indoor piece of furniture should not need much maintenance beyond the above. All of our indoor tables receive a final coat of clear varnish to increase protection from liquids and foods. As such, you cannot re-oil your indoor furniture without first fully sanding off this layer of varnish.

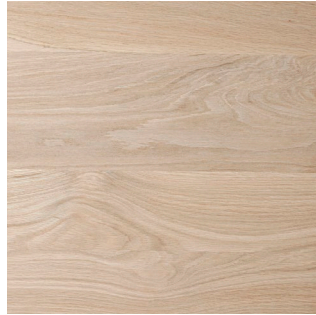
Should you need to sand and re-oil your piece of furniture please contact us first so that we can recommend the course of action particular to your chosen design, timber and finish.

We work with a local oil manufacturer who produces top quality environmentally friendly and non-toxic oil finishes which we can recommend to you based on your order.

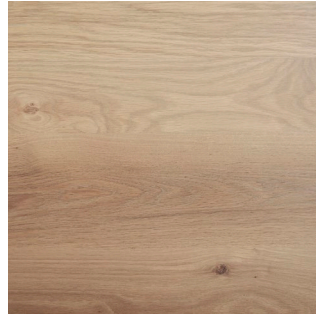
TIMBER SAMPLES :



ash - natural



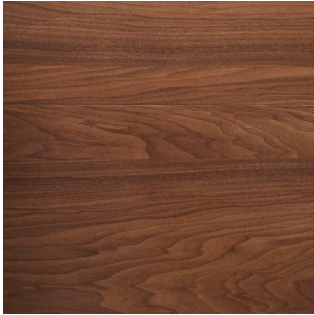
oak - natural



oak - grey oil



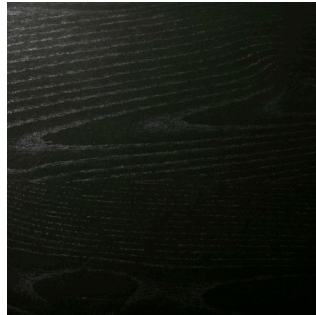
iroko - grey oil



walnut - clear oil

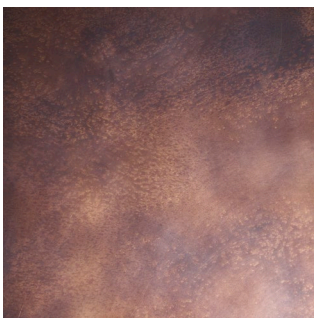


oak - gunmetal

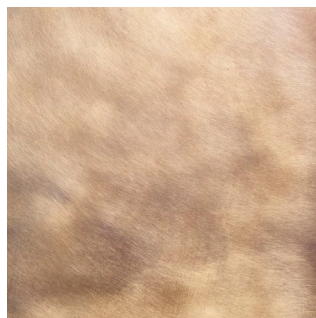


oak - dark charcoal

BRASS SAMPLES :



antique brass



brushed brass



bright brass