

James Mudge



BRASS TOP DESK | SERVER

JAMES MUDGE FURNITURE STUDIO

James Mudge



SPECIFICATIONS :

1200 x 500 x 750 mm high | tapered legs

oak base dark charcoal finish | antique brass inlay top

with one drawer

James Mudge



SPECIFICATIONS :

left : oak natural | tapered legs | antique brass inlay top

right: oak natural | drawer and handle detail

James Mudge



SPECIFICATIONS :

2000 x 900 x 750 mm high | tapered legs

oak base dark charcoal finish | antique brass inlay top

with one drawer

James Mudge



SPECIFICATIONS :

1500 x 500 x 750 mm high | tapered legs

walnut base clear oil finish | antique brass inlay top

with one drawer | pictured with a walnut hardwood chair

James Mudge



SPECIFICATIONS :

2000 x 450 x 800 mm high | tapered legs

walnut base clear oil finish | antique brass inlay top

with two drawers | optional extra low level shelf

James Mudge



SPECIFICATIONS :

left: oak base dark charcoal finish | turned legs | antique brass

right: oak base dark charcoal finish | tapered legs | antique brass

James Mudge



SPECIFICATIONS :

1800 x 700 x 750 mm high | turned legs

oak base natural finish | antique brass inlay top

with two drawers

James Mudge



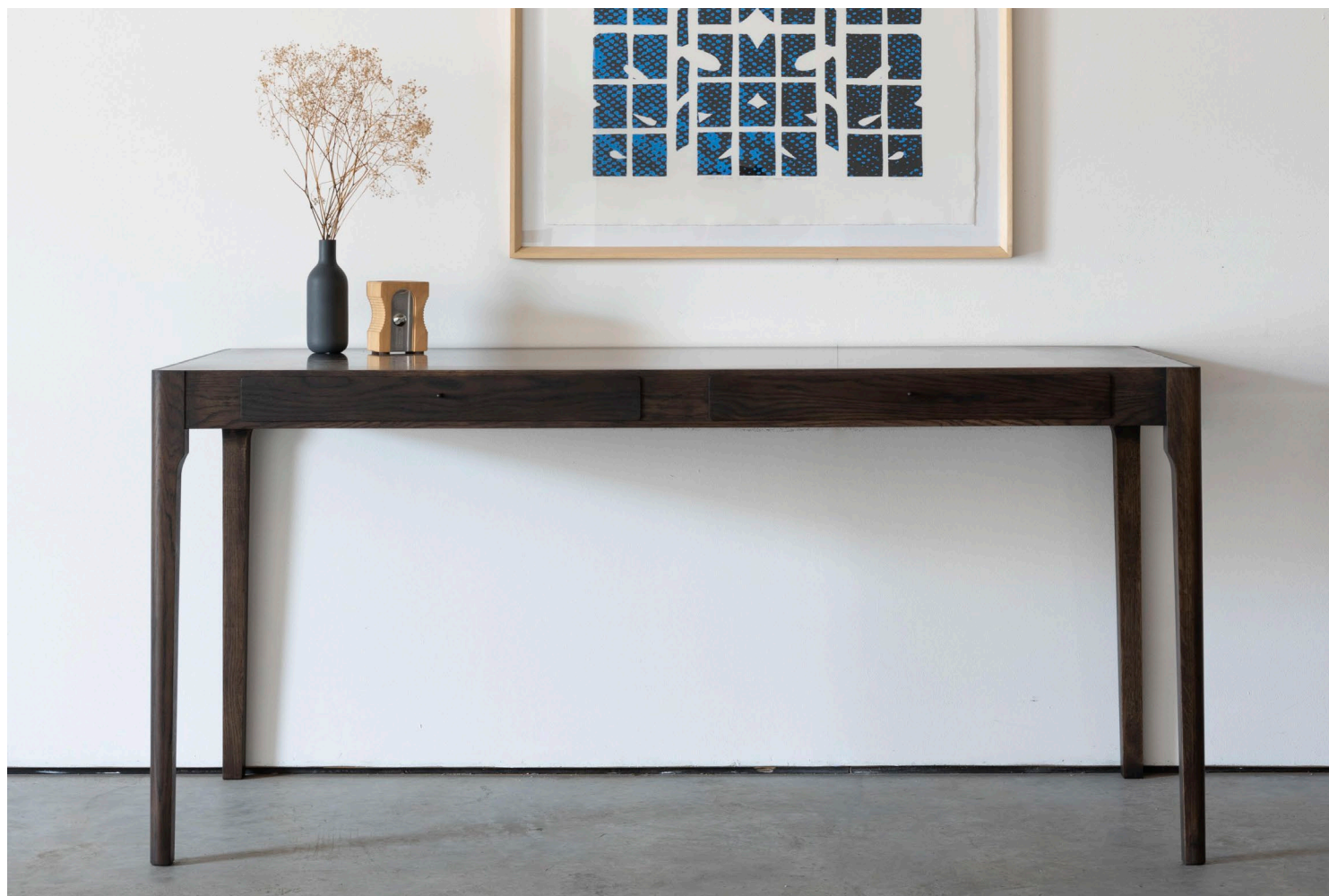
SPECIFICATIONS :

1200 x 500 x 750 mm high | turned legs

oak base natural finish | antique brass inlay top

with minimalist chest of drawers

James Mudge



SPECIFICATIONS :

1500 x 500 x 750 mm high | tapered legs

oak base gunmetal finish | antique brass inlay top

with two drawers

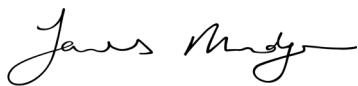
James Mudge



SPECIFICATIONS :

left: oak natural base | turned legs | antique brass top

right: oak natural | birch ply drawer detail



BRASS TOP DESKS | SERVERS :

The Brass Top Series, which includes side tables, dining tables and coffee tables among others, are a combination of brass and solid hardwood. The brass provides an interesting departure from solid timber whilst maintaining the material integrity of our designs. Brass is historically used in furniture and architecture and develops a worn-in patina over time. With use, scratches and scuffmarks will appear. For us this forms part of the warmth and charm of the antiquated brass finish, reminiscent of hotel bar-counters. The Brass finish is done by hand and patterns & tonal variation will all be unique.

Due to the size of the brass sheets, tables longer or wider than 2x1m will be made with joins in the brass top. While discreet and even, these joins are visible. The Fenix inlay can be done without joins. As with all of our table designs, we manufacture this design to order and to size in increments of 100mm. If you have a custom size in mind, please let us know and we will quote you accordingly. The minimum length to incorporate a drawer along the side is 750mm long, and the minimum for two drawers is 1400mm long.

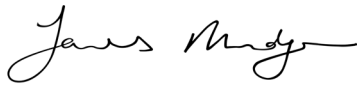
We can make this design with an optional extra low level shelf for additional storage and display requirements. Please enquire for pricing.

This design is suitable for indoor use only and, additionally, even indoors it should not be placed in full, direct sunlight everyday.

STANDARD SIZES SERVERS | SMALL DESKS :

		mm (L W H)
1 drawer	-	800 x 400 x 750
1 drawer	-	900 x 500 x 750
1 drawer	-	1000 x 500 x 750
1 drawer	-	1200 x 400 x 750
1 drawer	-	1200 x 500 x 750
1 drawer	-	1400 x 400 x 750
1 drawer	-	1400 x 500 x 750
1 drawer	-	1600 x 400 x 750

Continued on page 13.



STANDARD SIZES SERVERS | SMALL DESKS (CONT.) :

	includes drawer	mm (LWH)
	1 drawer	- 1600 x 500 x 750
	1 drawer	- 1800 x 400 x 750
	1 drawer	- 1800 x 500 x 750
	1 drawer	- 2000 x 400 x 750
	1 drawer	- 2000 x 500 x 750

STANDARD SIZES EXECUTIVE DESKS :

		mm (LWH)
	2 drawers	- 1400 x 700 x 750
	2 drawers	- 1400 x 800 x 750
	2 drawers	- 1600 x 700 x 750
	2 drawers	- 1600 x 800 x 750
	2 drawers	- 1600 x 900 x 750
	2 drawers	- 1800 x 700 x 750
	2 drawers	- 1800 x 800 x 750
	2 drawers	- 1800 x 900 x 750
	2 drawers	- 2000 x 800 x 750
	2 drawers	- 2000 x 900 x 750
	2 drawers	- 2000 x 1000 x 750

DESIGN OPTIONS :

base timbers : oak, ash, iroko, walnut (walnut priced separately)

timber finishes : natural, grey oil, gunmetal, or dark charcoal

design : tapered legs or turned legs

brass inlay : antiqued, brushed or bright brass

fenix inlay : white, black, deep grey, or london grey

BRASS EXAMPLES :



antique brass + oak natural



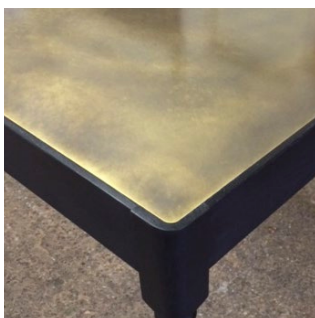
antique brass + oak dark charcoal



antique brass + oak gunmetal



brushed brass + oak grey oil



brushed brass + oak dark charcoal



bright brass + oak natural



bright brass + oak dark charcoal

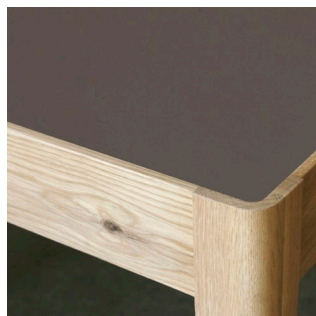


joins in antique brass

FENIX EXAMPLES :



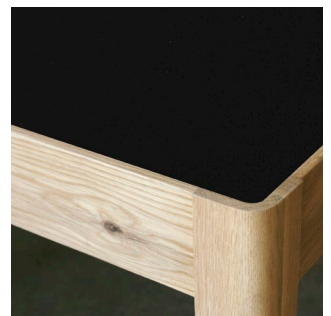
white fenix + oak natural



london grey fenix + oak natural



deep grey fenix + oak natural



black fenix + oak natural

James Mudge

CARE INSTRUCTIONS - BRASS SURFACES :

you will need:

microfibre soft cloths | rags

cobra wax polish (alternatively bees wax)

DAILY CARE :

Our brass topped tables have been designed to wear - with use scratches, scuff marks and ring marks will appear. For us this forms part of the charm of the antiquated brass finish, reminiscent of hotel bar-counters. However, to protect your table and minimize the impact of marks we recommend that you place rubber or felt pads underneath any medium weight or sharp object placed on top of the table such as lamps, sculptures, computers etc. We also recommend the use of coasters at all times if possible. Water, wine, sugary liquids, oils and vinegars should not be allowed to pool on the surface of the brass, nor should the brass be exposed to extreme heat (ie pots off the stove) as this will cause marks. Please be aware that unglazed ceramics (such as the underside of plates) are very abrasive - so you may want to use placemats.

After general day-to-day use, wipe down the brass surface with a slightly damp cloth to preserve the wax polish, then dry with a clean soft cloth. Slightly soapy water can be used to remove sticky surfaces.

Like all of our indoor furniture, the brass topped tables should not be used outdoors or placed in direct everyday sun. The solid wood will react to the sunlight, temperature changes, and moisture in the air, causing the wood to move and warp. The brass will expand and can warp if placed in full everyday sun. Exposure to UV will cause yellowing of the timber and surface cracking.

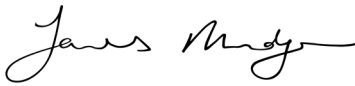
Use a humidifier to counteract the effects of airconditioning, especially if pointed directly at the table. Air conditioners dry out the air in a room and a humidifier will restore the moisture.

MAINTENANCE :

To prolong the protection of the brass finish, regularly apply Cobra Wax. This can be done as often as once every two weeks. Using a lint-free microfibre soft cloth gently rub on a small amount of wax, then use another clean, dry lint-free soft cloth to polish in circular motions. Make sure to remove all excess wax thoroughly to prevent a build up of wax. If you do not polish your brass surface regularly, then 2 or more coats could be needed to restore shine between long periods of neglect.

It is important that you do not use Brasso, Handy Andy or any other abrasive-based substance on the brass surfaces, as it will remove the antiqued patina resulting in bright gold spots. Do not place any other cleaning product on the brass (such as Mr Min) as the chemicals will cause a reaction on the surface and cause discolouration.

A good alternative to Cobra Wax polish is a beeswax polish or Pronature Wax Balm. These can be applied in the same way as is outlined above.



CARE INSTRUCTIONS - SOLID WOOD INDOOR FURNITURE :

you will need:

soft cloths / rags | water | soap

optional recommended soap: ProNature Plant Soap

DAILY CARE :

All the finishes we offer provide good protection to the timber. However, no finish can offer bullet-proof resistance to staining or scratches and your furniture will not be impervious to damage. But if you follow the instructions laid out below, it should be sufficient for normal, everyday use.

After use, wipe down the wood surfaces with a slightly damp soft cloth to preserve and protect the wood coating. Dry with another cloth if a lot of water remains. Do not expose these products for any extent of time to pools of water. If the products get wet you should dry them off as soon as possible. Most specifically oil, vinegar and fatty foods should be wiped up immediately using a mild solution of soapy water on a well-rung out damp cloth. Spills should not be left overnight as they will sink in and mark.

Never use Ammonia (ie Handy Andy) or oil/silicone based cleaners (ie Mr Min) on solid wood furniture as they will damage the finishes and can create cloudy marks.

Placing hot items on the wood may result in damage or burning. We recommend that you use coasters and trivets to protect the table tops from hot dishes.

We do not recommend that you place indoor furniture outdoors for any period of time. Outdoor furniture, even for covered outdoor areas, is specially designed to be able to withstand the dramatic temperature changes and moisture in the air. Exposing indoor furniture to outdoor environments could lead to warping, cracks, discolouration and ultimately will weaken the structural integrity of the design over time. Please enquire about our outdoor range if you are in need of outdoor or semi-outdoor furniture.

When used indoors, avoid placing solid wood furniture in full, everyday sun as exposure to sun/UV can cause yellowing, bleaching and light surface cracks.

Heavily airconditioned environments require the use of an humidifier to restore the natural humidity of the air, as extremely dry air will result in cracking / warping of the timber. This is also the case with central heating in cold climate countries.

MAINTENANCE :

When properly taken care of, your indoor piece of furniture should not need much maintenance beyond the above. All of our indoor tables receive a final coat of clear varnish to increase protection from liquids and foods. As such, you cannot re-oil your indoor furniture without first fully sanding off this layer of varnish.

Should you need to sand and re-oil your piece of furniture please contact us first so that we can recommend the course of action particular to your chosen design, timber and finish.

We work with a local oil manufacturer who produces top quality environmentally friendly and non-toxic oil finishes which we can recommend to you based on your order.

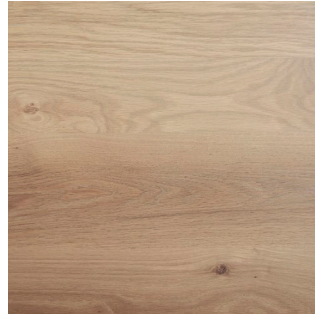
TIMBER SAMPLES :



ash - natural



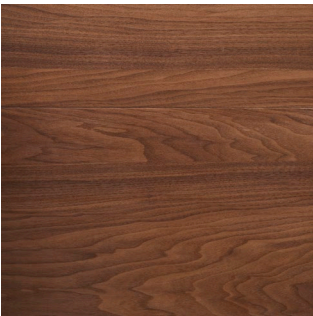
oak - natural



oak - grey oil



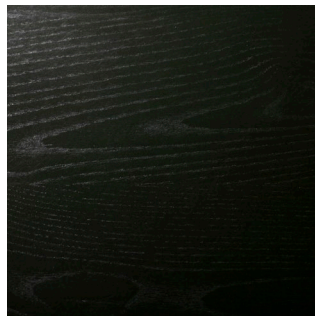
iroko - grey oil



walnut - clear oil

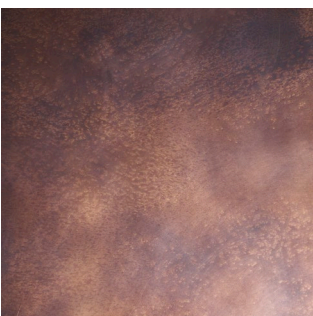


oak - gunmetal

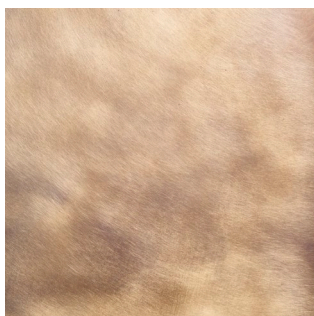


oak - dark charcoal

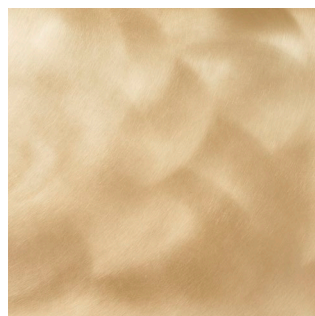
BRASS SAMPLES :



antique brass

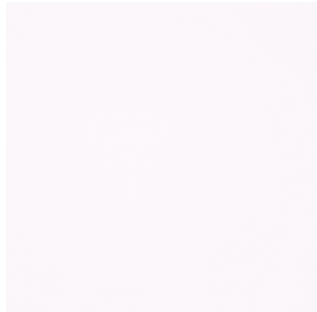


brushed brass

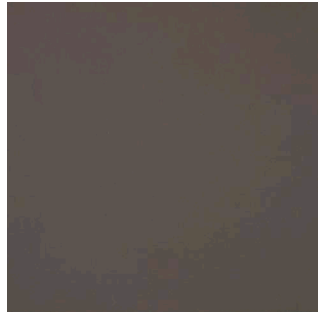


bright brass

FENIX SAMPLES :



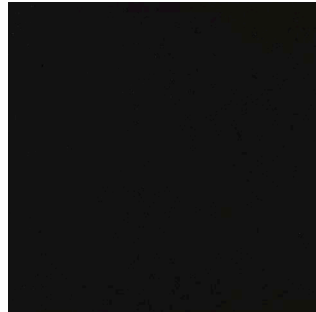
fenix - alaska white



fenix - london grey



fenix - deep grey



fenix - indigo black

ABOUT FENIX :

The external surface of FENIX NTM involves the use of nanotechnology and its decor is obtained through next generation resins developed by Arpa Industriale.

The use of next generation thermoplastic resins means that FENIX NTM has a closed surface structure. As a result the surface has a very low light reflectivity (a surface specular reflectance of 1.5 at 60°) and is soft to the touch. Along with the low light reflectivity, FENIX NTM has an extremely matt surface which does not show fingerprints, combined with the ability for thermal healing of micro-scratches.

FENIX properties include: Low light reflectivity, extremely matt surface; Anti-fingerprint; Soft touch; Thermal healing of micro scratches; Resistant to scratches and abrasions; Enhanced anti-bacterial properties; Hygienic; Suitable for contact with food; Easy to clean; Mold resistant; Anti static; Hydro-repellent; Dimensional stability even at high temperature changes; Resistant to impact; Lightfastness; Resistance to dry heat; High resistance to acid solvents and household reagents.

For more information visit :

<https://www.youtube.com/watch?v=SyXVHBO80lg>

CARE AND MAINTENANCE :

Although very durable, the surface of Fenix must never be treated with products containing abrasive substances, abrasive sponges or unsuitable products, such as sandpaper or steel wool. Products with a high acid or very alkaline content should be avoided because they can stain the surface. When using solvents (acetone) the white cloth used must be perfectly clean so as not to leave stains on the Fenix surface. Avoid furniture polishes and wax-based cleaners in general, because they tend to form a sticky layer on the dense Fenix surface, to which dirt adheres.

Your Fenix surface should be cleaned regularly, but does not require any special maintenance, just a damp cloth with warm water or mild soapy detergents. Almost all normal household cleaning products or disinfectants are perfectly well tolerated. It is suggested to use a melamine foam sponge - also known as magic sponge - for the normal cleaning and maintenance of the surface. In case of dirt which cannot be cleaned with normal household detergents, due to the irregular topography and closed surface of Fenix, the use of non-aggressive aromatic solvents (acetone) is suggested. In case of micro scratches, please refer to the specific surface thermal healing instructions.

For thorough instructions on how best to clean your Fenix surface please refer to the separate document for Fenix cleaning and maintenance. This gives specialised information pertaining to the types of dirt in question, with solutions to these specific types.