

*James Mudge*



THE CAMPARI CABINET

JAMES MUDGE FURNITURE STUDIO



**SPECIFICATIONS :**

---

interior detail showing floating french oak shelves

---

brass and mirror back panels

---

and complex mitre joins on the doors

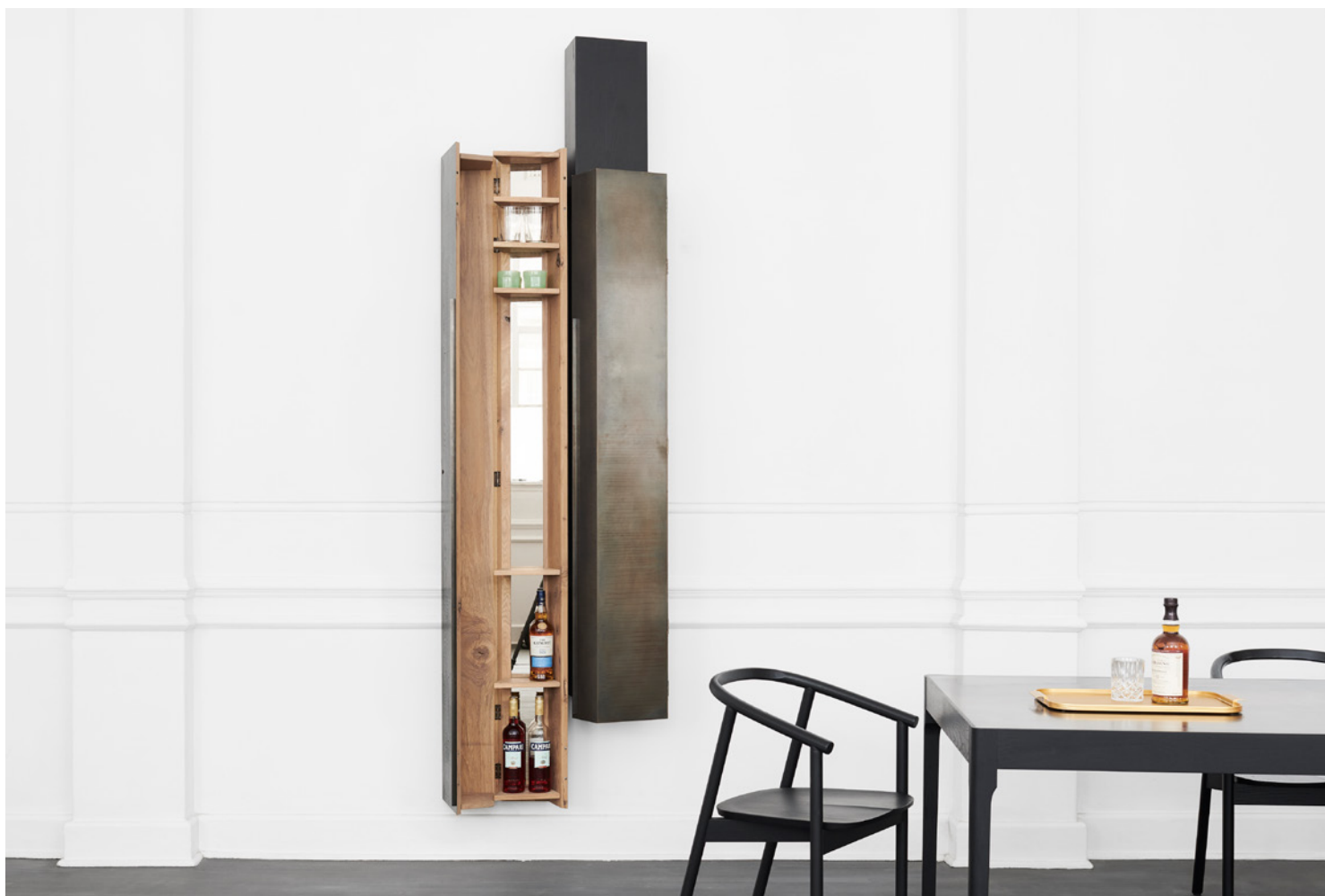
---

---

---

---

James Mudge



**SPECIFICATIONS :**

wallmounted drinks cabinet pictured here with

the brass top dining table and hardwood dining chairs

both in the oak dark charcoal finish

James Mudge



**SPECIFICATIONS :**

---

(from left )

---

detail of french oak timber with bronzed mirror backing

---

brass interior with french oak shelf and hing detail

---

James Mudge



**SPECIFICATIONS :**

---

(from left )

---

detail of solid brass handles with antique brass door

---

floating french oak shelves with grey mirror backing

---

James Mudge



**SPECIFICATIONS :**

(from left )

fully open and closed

DETAILS :

THE CAMPARI CABINET :

---

Inspired while sipping Negroni's on the Venice lagoon, this striking cabinet displays not only the high level of craftsmanship required to produce a piece of this magnitude, but also represents the romanticism of the ancient city waterways and long-lasting architectural design. From the original concept from which an all-timber version was made, a second piece evolved where we introduced brass and blacked oak, as seen in these pictures. Brass is historically used in furniture and architecture and is representative of an Italian interior style and energy. These two pieces together, the inside and the outside, convey the rich atmosphere of the Venice experience.

Kindly note that the Brass finish is done by hand and patterns & tonal variation will all be unique. Similarly, French Oak is a very characterful timber: large knots and cracks in the wood as well as discolourations are what this specific timber are known and admired for. It has been specifically selected for this cabinet design to allude back to the origin of the idea - the ancient Venice buildings, the old timber with its beautiful long-standing putrefaction.

This design is for use indoors only and should not be placed in full, direct sunlight everyday. This cabinet can be wall-mounted onto standard masonry wall only.

STANDARD SIZES :

---

---

all timber - 550 x 400 x 2400mm high

---

timber & brass - 550 x 400 x 2400mm high

---

---

---

## CARE INSTRUCTIONS : BRASS + SOLID WOOD

### YOU WILL NEED :

---

---

2 or more lint-free soft cloths

---

---

cobra wax polish or similar (a good alternative is beeswax)

---

### DAILY CARE :

---

The Brass top surfaces have been designed to wear - with use scratches, scuff marks and ring marks will appear. For us this forms part of the charm of the antiquated brass finish, reminiscent of country hotel bar-counters. On the cabinet doors, which will not get any direct use, this will not be very aparent. However the interior bright brass will develop a beautiful worn-in patina with use.

Like all of our indoor furniture, this design should not be used outdoors or placed in direct everyday sun. The solid wood will react to the sunlight, temperature changes, and moisture in the air, causing the wood to move and warp. The brass will expand and can warp if placed in full everyday sun. Exposure to UV will cause yellowing of the timber and surface cracking.

Use a humidifier to counteract the effects of airconditioning, especially if pointed directly at the table. Air conditioners dry out the air and a humififier will restore the moisture. Slightly soapy water can be used to remove sticky surfaces.

Slightly soapy water can be used to remove sticky surfaces.

### BRASS MAINTENANCE :

---

To prolong the protection of the brass finish, regularly apply Cobra Wax. This can be done as often as once every two weeks. Using a lint-free soft cloth gently rub on a small amount of wax, then use another clean, dry lint-free soft cloth to polish in circular motions. Make sure to remove all excess wax thoroughly to prevent a build up of wax. If you do not polish your brass surface regularly then 2 or more coats could be needed to restore shine between long periods of neglect.

It is important that you do not use Brasso, Handy Andy or any other abrasive-based substance on the brass surfaces, as it will remove the antiqued patina resulting in bright gold spots. Do not place any other cleaning product on the brass (such as Mr Min) as the chemicals will cause a reation on the surface and cause discolouration.

A good alternative to Cobra Wax polish is a beeswax polish or Pronature Wax Balm. This can be applied as outlined above.

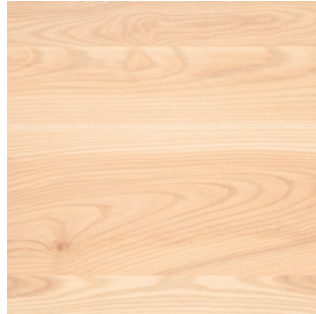


TIMBER SAMPLES :

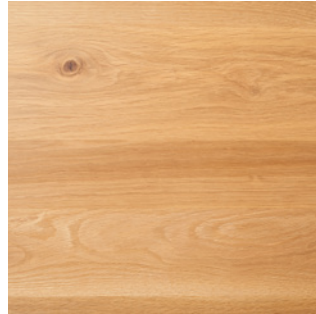
---



ash - natural



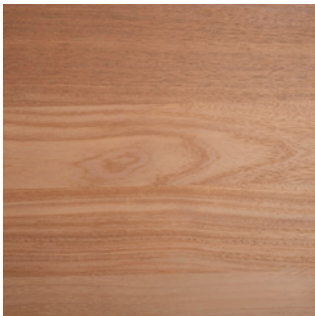
ash - grey oil



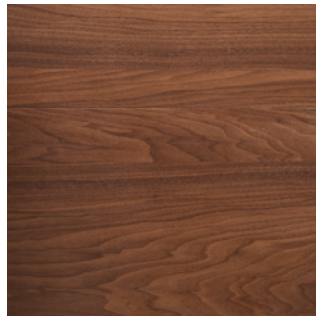
oak - natural



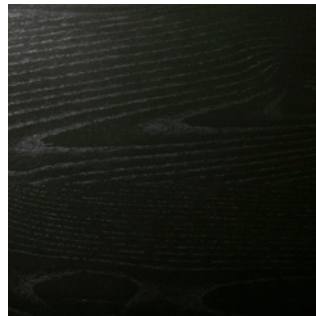
oak - grey oil



iroko - grey oil



walnut - natural



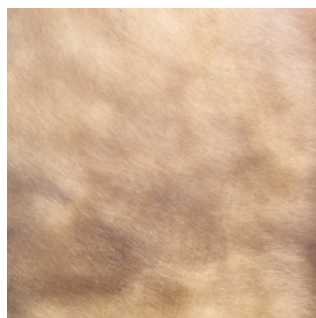
oak - dark charcoal

BRASS SAMPLES :

---



antique brass



brushed brass



bright brass