

James Mudge



ROUND THREEFOLD DINING TABLE

JAMES MUDGE FURNITURE STUDIO

James Mudge



SPECIFICATIONS :

1400 Ø x 750mm | 44mm thick top | 5 - 6 seater

antique brass top with joined timber frame | oak grey oil finish

with hardwood chairs | various painted finishes

James Mudge



SPECIFICATIONS :

1400 Ø x 750mm high

detail of the antique brass inlay top made in 3 sections

James Mudge



SPECIFICATIONS :

1200 Ø x 750mm | 44mm thick top

solid timber base and top | oak gunmetal finish

with dark charcoal riempie chairs

James Mudge



SPECIFICATIONS :

left: base detail | oak grey oil finish

right: top detail | antique brass inlay made in three sections

James Mudge



SPECIFICATIONS :

left: solid timber top | oak gunmetal finish

right: threefold table with minimalist cabinet

ROUND THREEFOLD TABLE :

Designed with an asymmetrical base, the Threefold Table gives you a fresh new look from each angle. The quiet, rounded details of the legs provide a delicacy and softness which is contrasted by its undeniably contemporary aesthetic. A striking design, the Threefold Table is a statement piece of furniture and, aside from a fantastic dining table, will offer a strong focal point and wow factor to your entrance hall.

The Round Threefold Table is made with either a brass inlay top or with a solid wood top. When made with a brass top, three sections of brass join together to form a triangular detail. Although these joins are visible, they do not detract from the fine craftsmanship of this piece but rather form an intricate design detail. The brass is then bordered by a solid wood timber frame, keeping the edges smooth and warm to the touch.

As this design is made with a central leg it is easy to configure chairs evenly around it, and can thus seat between 4 and 8 chairs (size dependent). However, it is good to note that tables such as this will always look more elegant with fewer chairs placed around them, to better be able to see the base and overall balance of the design.

Due to the complexity of this design, we only make it in the below listed sizes.

Kindly note that this design is suitable for indoor use only and, when made with a brass inlay top or the dark charcoal finish, you should avoid placing the table in full, everyday sun, even indoors.

STANDARD SIZES DINING :

		mm (D H)
4 - 5 seater	-	1200 Ø x 750
5 - 6 seater	-	1400 Ø x 750
6 - 8 seater	-	1600 Ø x 750

Please see overleaf seating arrangement layout drawings.

SEATING LAYOUT :

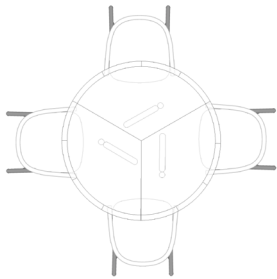
When choosing the size of your dining room table it is important to consider the style and size of the chairs you will be using, as well as the leg placement of the table design. The Round Threefold Table has a central base with a 300mm overhang, making it easy to place chairs around the table evenly without the legs getting in the way. Due to the complexity of this design, we only make the Threefold Table in three sizes. As you can see below, you will be able to fit various quantities of chairs around a single size, depending on the chair sizes and also your requirements. As with all table designs, fewer chairs placed permanently around the table will give a more elegant look and feel to the dining arrangement.

The below seating layouts use our Hardwood Chair, which is a good measure of a medium size chair with armrests. If the chair you select is wider than 600mm you may require a custom layout drawing to make sure that your seating arrangement will fit, if you are trying to fit the maximum number of chairs around one of the three given table sizes.

4 Seater

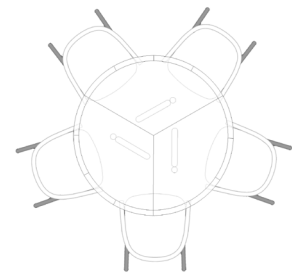
1200 Ø x 750mm high | chairs 540mm wide
Overhang: 300mm

4 - 5



5 Seater

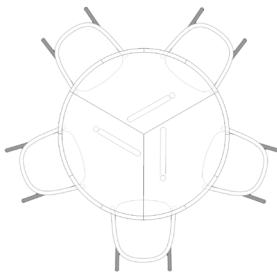
1200 Ø x 750mm high | chairs 540mm wide
Overhang: 300mm



5 Seater

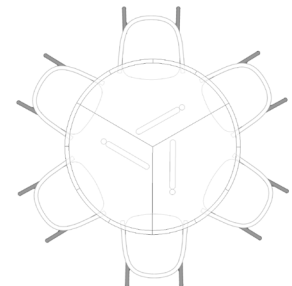
1400 Ø x 750mm high | chairs 540mm wide
Overhang: 300mm

5 - 6



6 Seater

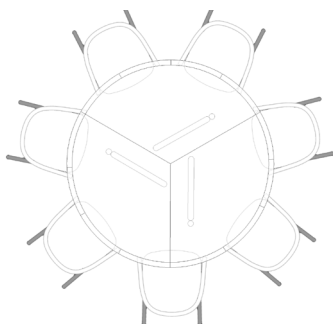
1400 Ø x 750mm high | chairs 540mm wide
Overhang: 300mm



7 Seater

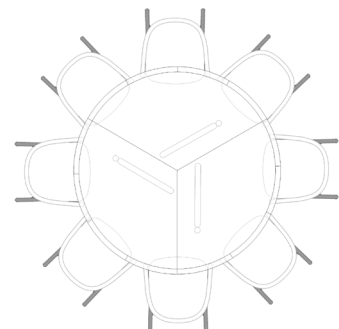
1600 Ø x 750mm high | chairs 540mm wide
Overhang: 300mm

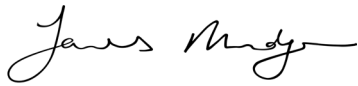
7 - 8



8 Seater

1600 Ø x 750mm high | chairs 540mm wide
Overhang: 300mm





CARE INSTRUCTIONS - BRASS SURFACES :

you will need:

microfibre soft cloths | rags

cobra wax polish (alternatively bees wax)

DAILY CARE :

Our brass topped tables have been designed to wear - with use scratches, scuff marks and ring marks will appear. For us this forms part of the charm of the antiquated brass finish, reminiscent of hotel bar-counters. However, to protect your table and minimize the impact of marks we recommend that you place rubber or felt pads underneath any medium weight or sharp object placed on top of the table such as lamps, sculptures, computers etc. We also recommend the use of coasters at all times if possible. Water, wine, sugary liquids, oils and vinegars should not be allowed to pool on the surface of the brass, nor should the brass be exposed to extreme heat (ie pots off the stove) as this will cause marks. Please be aware that unglazed ceramics (such as the underside of plates) are very abrasive - so you may want to use placemats.

After general day-to-day use, wipe down the brass surface with a slightly damp cloth to preserve the wax polish, then dry with a clean soft cloth. Slightly soapy water can be used to remove sticky surfaces.

Like all of our indoor furniture, the brass topped tables should not be used outdoors or placed in direct everyday sun. The solid wood will react to the sunlight, temperature changes, and moisture in the air, causing the wood to move and warp. The brass will expand and can warp if placed in full everyday sun. Exposure to UV will cause yellowing of the timber and surface cracking.

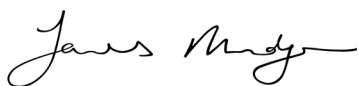
Use a humidifier to counteract the effects of airconditioning, especially if pointed directly at the table. Air conditioners dry out the air in a room and a humidifier will restore the moisture.

MAINTENANCE :

To prolong the protection of the brass finish, regularly apply Cobra Wax. This can be done as often as once every two weeks. Using a lint-free microfibre soft cloth gently rub on a small amount of wax, then use another clean, dry lint-free soft cloth to polish in circular motions. Make sure to remove all excess wax thoroughly to prevent a build up of wax. If you do not polish your brass surface regularly, then 2 or more coats could be needed to restore shine between long periods of neglect.

It is important that you do not use Brasso, Handy Andy or any other abrasive-based substance on the brass surfaces, as it will remove the antiqued patina resulting in bright gold spots. Do not place any other cleaning product on the brass (such as Mr Min) as the chemicals will cause a reaction on the surface and cause discolouration.

A good alternative to Cobra Wax polish is a beeswax polish or Pronature Wax Balm. These can be applied in the same way as is outlined above.



CARE INSTRUCTIONS - SOLID WOOD INDOOR FURNITURE :

you will need:

soft cloths / rags | water | soap

optional recommended soap: ProNature Plant Soap

DAILY CARE :

All the finishes we offer provide good protection to the timber. However, no finish can offer bullet-proof resistance to staining or scratches and your furniture will not be impervious to damage. But if you follow the instructions laid out below, it should be sufficient for normal, everyday use.

After use, wipe down the wood surfaces with a slightly damp soft cloth to preserve and protect the wood coating. Dry with another cloth if a lot of water remains. Do not expose these products for any extent of time to pools of water. If the products get wet you should dry them off as soon as possible. Most specifically oil, vinegar and fatty foods should be wiped up immediately using a mild solution of soapy water on a well-rung out damp cloth. Spills should not be left overnight as they will sink in and mark.

Never use Ammonia (ie Handy Andy) or oil/silicone based cleaners (ie Mr Min) on solid wood furniture as they will damage the finishes and can create cloudy marks.

Placing hot items on the wood may result in damage or burning. We recommend that you use coasters and trivets to protect the table tops from hot dishes.

We do not recommend that you place indoor furniture outdoors for any period of time. Outdoor furniture, even for covered outdoor areas, is specially designed to be able to withstand the dramatic temperature changes and moisture in the air. Exposing indoor furniture to outdoor environments could lead to warping, cracks, discolouration and ultimately will weaken the structural integrity of the design over time. Please enquire about our outdoor range if you are in need of outdoor or semi-outdoor furniture.

When used indoors, avoid placing solid wood furniture in full, everyday sun as exposure to sun/UV can cause yellowing, bleaching and light surface cracks.

Heavily airconditioned environments require the use of an humidifier to restore the natural humidity of the air, as extremely dry air will result in cracking / warping of the timber. This is also the case with central heating in cold climate countries.

MAINTENANCE :

When properly taken care of, your indoor piece of furniture should not need much maintenance beyond the above. All of our indoor tables receive a final coat of clear varnish to increase protection from liquids and foods. As such, you cannot re-oil your indoor furniture without first fully sanding off this layer of varnish.

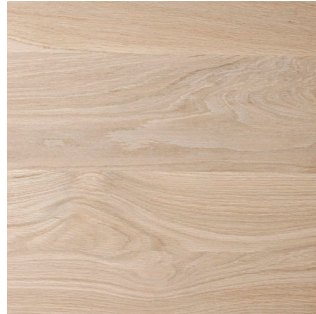
Should you need to sand and re-oil your piece of furniture please contact us first so that we can recommend the course of action particular to your chosen design, timber and finish.

We work with a local oil manufacturer who produces top quality environmentally friendly and non-toxic oil finishes which we can recommend to you based on your order.

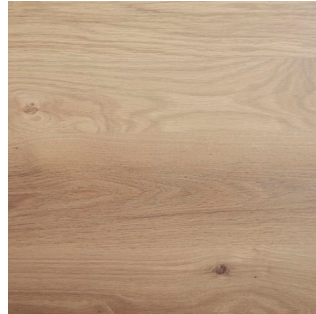
TIMBER SAMPLES :



ash - natural



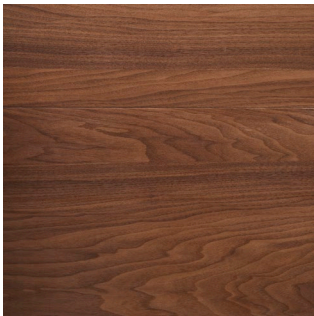
oak - natural



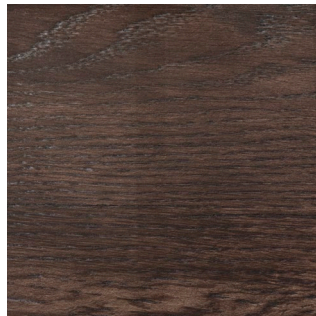
oak - grey oil



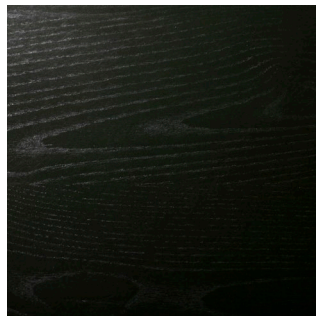
iroko - grey oil



walnut - clear oil

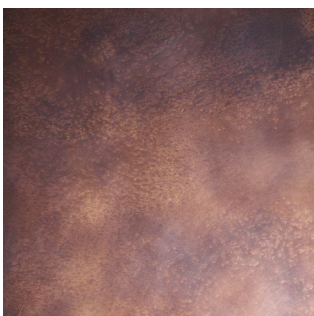


oak - gunmetal

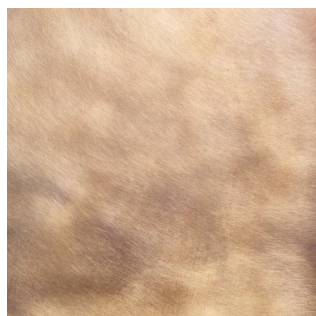


oak - dark charcoal

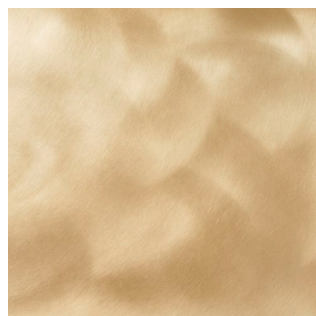
BRASS SAMPLES :



antique brass



brushed brass



bright brass