

*James Mudge*



ROUND ARTICULATED TABLE

JAMES MUDGE FURNITURE STUDIO



SPECIFICATIONS :

---

1850mm diameter x 750mm high | 70mm thick top

---

french oak with a grey oil finish

---

with dark charcoal riempie chairs

---

James Mudge



**SPECIFICATIONS :**

---

---

1600mm diameter x 750mm high | 60mm thick top

---

french oak with a grey oil finish

---

---

---

James Mudge

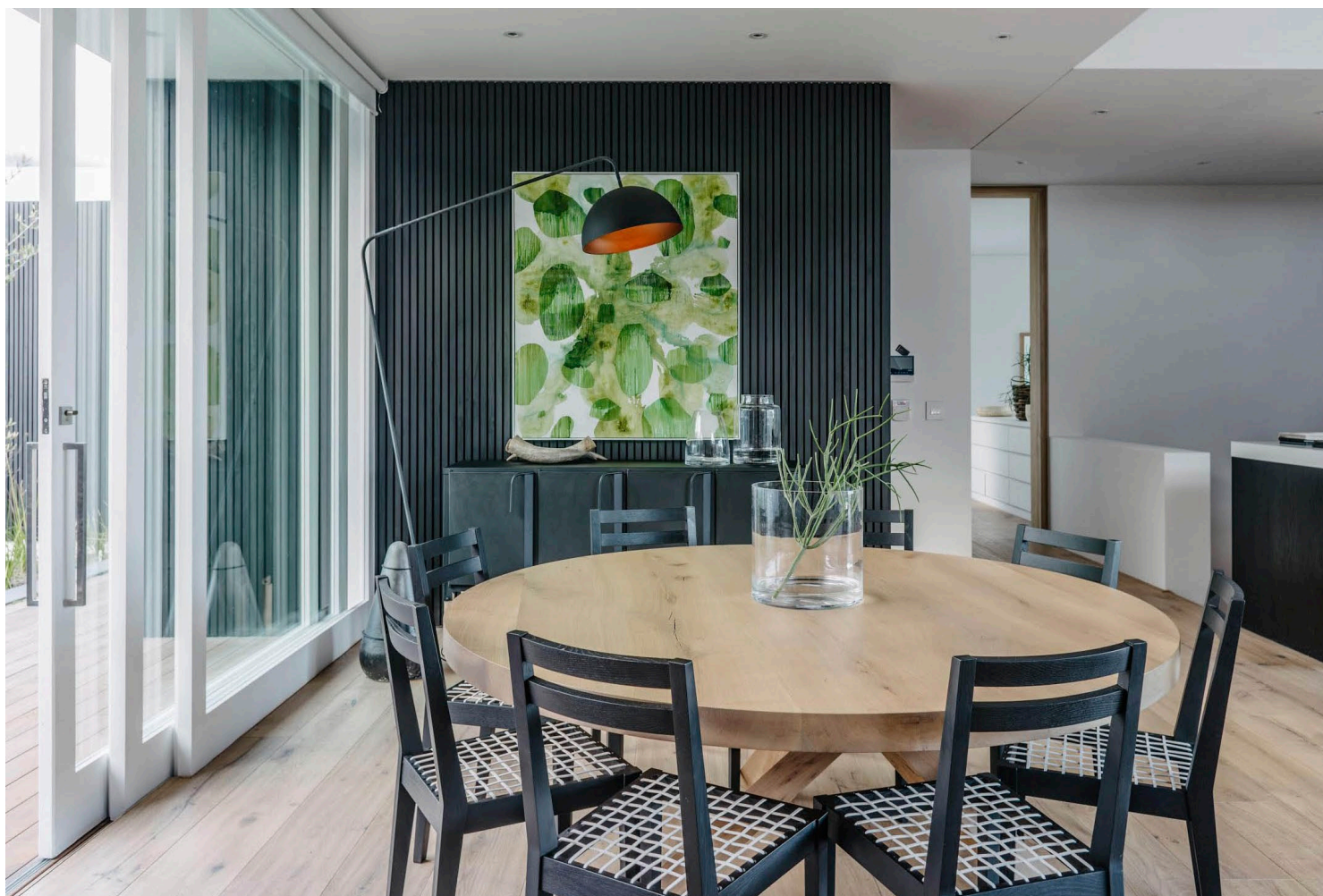


**SPECIFICATIONS :**

1850mm diameter x 750mm high | 70mm thick top

iroko with a grey oil finish





**SPECIFICATIONS :**

---

---

1850mm diameter x 750mm high | 70mm thick top

---

---

french oak with a grey oil finish

---

---

with dark charcoal riempie chairs

---

James Mudge



**SPECIFICATIONS :**

---

---

1600mm diameter x 750mm high | 70mm thick top

---

french oak with a grey oil finish

---

detail of traditional timber joinery

---

---



James Mudge



**SPECIFICATIONS :**

---

1600mm diameter x 750mm high | 60mm thick top

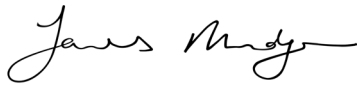
---

french oak with a grey oil finish

---

detail showing the charateristic knots and cracks of french oak

---



**ROUND ARTICULATED TABLE :**

---

The Round Articulated Table is a commanding piece of furniture and a striking design.

The asymmetry of the base and top is a feat of structural engineering and creates the illusion of a thick, solid wood floating top - almost defying gravity. Each angle of the table offers a unique viewpoint, making this design a real show-stopper.

The Round Articulated Table is available in two timbers French Oak or Iroko. Please note that French Oak is a very characterful timber and characteristics such as knots, cracks and discolouration should not be considered defects, but rather make up the essence and natural beauty of this particular timber. Iroko timber, on the other hand, offers a very straight grain with few knots and develops a nutty brown colour over time.

Due to the complexity of the Articulated Table, we currently only manufacture it in two sizes, as listed below. When made 1600mm diameter, we make the base and top slightly thinner so as to keep the design in proportion. The top is 60mm thick on the 1600mm diameter and 70mm thick on the 1850mm diameter option.

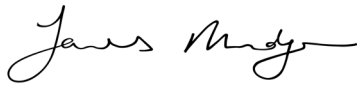
This design is suitable for indoor use only.

**STANDARD SIZES DINING :**

---

70mm top		mm ( D H )
6 seater	-	1600 Ø x 750
8 seater	-	1850 Ø x 750
This design is made in the above two sizes only.		





CARE INSTRUCTIONS - SOLID WOOD INDOOR FURNITURE :

---

you will need:

soft cloths / rags | water | soap

optional recommended soap: ProNature Plant Soap

---

DAILY CARE :

---

All the finishes we offer provide good protection to the timber. However, no finish can offer bullet-proof resistance to staining or scratches and your furniture will not be impervious to damage. But if you follow the instructions laid out below, it should be sufficient for normal, everyday use.

After use, wipe down the wood surfaces with a slightly damp soft cloth to preserve and protect the wood coating. Dry with another cloth if a lot of water remains. Do not expose these products for any extent of time to pools of water. If the products get wet you should dry them off as soon as possible. Most specifically oil, vinegar and fatty foods should be wiped up immediately using a mild solution of soapy water on a well-rung out damp cloth. Spills should not be left overnight as they will sink in and mark.

Never use Ammonia (ie Handy Andy) or oil/silicone based cleaners (ie Mr Min) on solid wood furniture as they will damage the finishes and can create cloudy marks.

Placing hot items on the wood may result in damage or burning. We recommend that you use coasters and trivets to protect the table tops from hot dishes.

We do not recommend that you place indoor furniture outdoors for any period of time. Outdoor furniture, even for covered outdoor areas, is specially designed to be able to withstand the dramatic temperature changes and moisture in the air. Exposing indoor furniture to outdoor environments could lead to warping, cracks, discolouration and ultimately will weaken the structural integrity of the design over time. Please enquire about our outdoor range if you are in need of outdoor or semi-outdoor furniture.

When used indoors, avoid placing solid wood furniture in full, everyday sun as exposure to sun/UV can cause yellowing, bleaching and light surface cracks.

Heavily airconditioned environments require the use of an humidifier to restore the natural humidity of the air, as extremely dry air will result in cracking / warping of the timber. This is also the case with central heating in cold climate countries.

MAINTENANCE :

---

When properly taken care of, your indoor piece of furniture should not need much maintenance beyond the above. All of our indoor tables receive a final coat of clear varnish to increase protection from liquids and foods. As such, you cannot re-oil your indoor furniture without first fully sanding off this layer of varnish.

Should you need to sand and re-oil your piece of furniture please contact us first so that we can recommend the course of action particular to your chosen design, timber and finish.

We work with a local oil manufacturer who produces top quality environmentally friendly and non-toxic oil finishes which we can recommend to you based on your order.

*James Mudge*

TIMBER SAMPLES 70 TOP :

---



french oak - grey oil



iroko - grey oil

FRENCH OAK CHARACTER

---



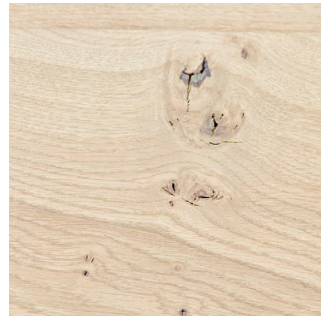
cracks



sticker marks



medullary rays



knots