

James Mudge



MINIMALIST CHEST OF DRAWERS

JAMES MUDGE FURNITURE STUDIO

James Mudge



SPECIFICATIONS :

iroko grey oil | 1000 x 510 x 900 mm high

with timber drawer fronts and birch ply inner

with plinth base

James Mudge



SPECIFICATIONS :

walnut clear oil finish | 1800 x 510 x 900mm high | custom

with hardened steel pin handles

pictured with the Windsor Chair in oak gunmetal finish

James Mudge



SPECIFICATIONS :

oak grey oil | 1500 x 510 x 550mm high

with timber drawer fronts and birch ply inners

with rounded leg base

James Mudge



SPECIFICATIONS :

oak grey oil | 1500 x 510 x 550mm high

with timber drawer fronts and birch ply inners

interior detail

James Mudge



SPECIFICATIONS :

left: detail showing antique brass fronts on the sideboard version

right: made as a bedside table | 500 x 450 x 630 mm high

oak grey oil finish

James Mudge



SPECIFICATIONS :

oak natural | 500 x 510 x 600 mm high | with plinth base

with timber drawer fronts and birch ply inners

pictured with brass top side table

James Mudge



SPECIFICATIONS :

1000 x 510 x 900 mm high | with rounded-leg base

with custom brass handles (available by request)

oak grey oil | timber drawer fronts and birch ply inners

James Mudge



SPECIFICATIONS :

left : the works drinks cabinet in iroko grey oil finish with antique

brass door fronts serves to illustrate the brass finish available.

right: minimalist server in oak dark charcoal finish with brass fronts

MINIMALIST CHEST OF DRAWERS :

The Minimalist Chest of Drawers is a simple and classic design offering ample storage for the home and office. We make this piece in many different sizes and configurations which give diverse functionality for the bedroom, sitting room or office. For office use the drawers can be adapted to incorporate a hanging file solution, or locks - please advise us if this is something you need.

The Minimalist Chest of Drawers is available in various timber and finish options and can be made with brass covered fronts as an alternative to the solid timber drawer fronts.

The Minimalist Chest of Drawers is made with either a rounded-leg base or a plinth base, as per the drawings below. This does not affect the price but it can affect the number of drawers available.

Please note that this design is intended to be placed against a wall and has a Birch Ply backing. Should you require a piece to stand in the middle of a room and be viewed from both sides please enquire for the pricing variation.

This design is suitable for indoor use only.

STANDARD SIZES :

MINIMALIST CHEST OF DRAWERS - ROUNDED LEG BASE

1000 x 510 x 900mm high

800 x 510 x 900mm high

700 x 510 x 700mm high

500 x 510 x 700mm high

MINIMALIST CHEST OF DRAWERS - ROUNDED LEG BASE (LOW)

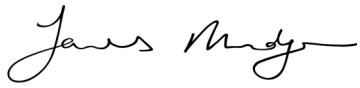
1800 x 510 x 550mm high

1500 x 510 x 550mm high

1200 x 510 x 550mm high

700 x 510 x 550mm high

500 x 510 x 550mm high



STANDARD SIZES :

MINIMALIST CHEST OF DRAWERS - PLINTH BASE

1000 x 510 x 900mm high

800 x 510 x 900mm high

700 x 510 x 600mm high

500 x 510 x 600mm high

MINIMALIST CHEST OF DRAWERS - PLINTH BASE (LOW)

1800 x 510 x 500mm high

1500 x 510 x 500mm high

1200 x 510 x 500mm high

700 x 510 x 500mm high

500 x 510 x 500mm high

MINIMALIST CHEST OF DRAWERS
ROUNDED LEG BASE:



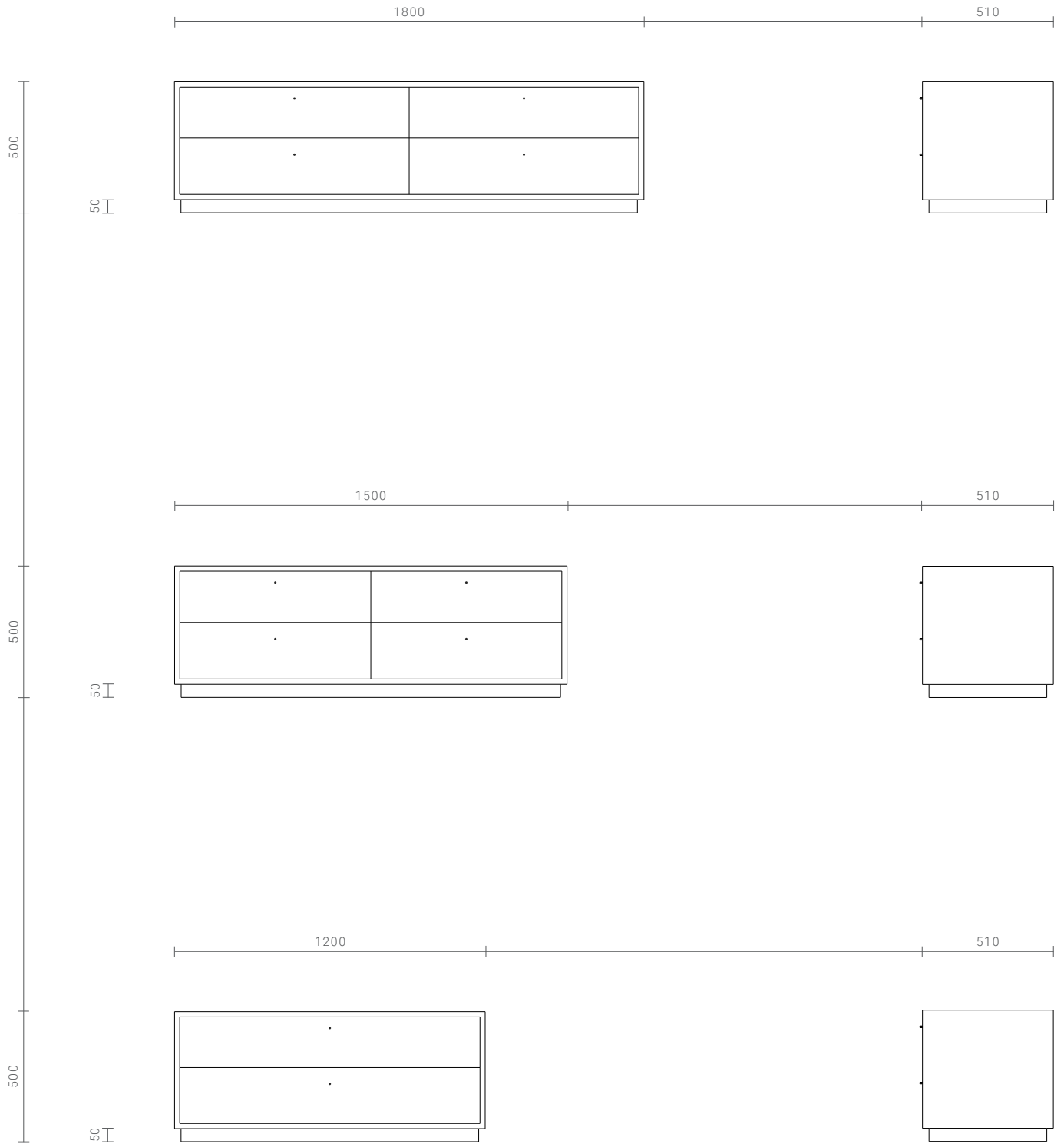
MINIMALIST CHEST OF DRAWERS
ROUNDED LEG BASE (LOW) :

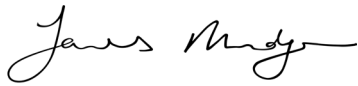


MINIMALIST CHEST OF DRAWERS
PLINTH BASE :



MINIMALIST CHEST OF DRAWERS
PLINTH BASE (LOW) :





CARE INSTRUCTIONS - SOLID WOOD INDOOR FURNITURE :

you will need:

soft cloths / rags | water | soap

optional recommended soap: ProNature Plant Soap

DAILY CARE :

All the finishes we offer provide good protection to the timber. However, no finish can offer bullet-proof resistance to staining or scratches and your furniture will not be impervious to damage. But if you follow the instructions laid out below, it should be sufficient for normal, everyday use.

After use, wipe down the wood surfaces with a slightly damp soft cloth to preserve and protect the wood coating. Dry with another cloth if a lot of water remains. Do not expose these products for any extent of time to pools of water. If the products get wet you should dry them off as soon as possible. Most specifically oil, vinegar and fatty foods should be wiped up immediately using a mild solution of soapy water on a well-rung out damp cloth. Spills should not be left overnight as they will sink in and mark.

Never use Ammonia (ie Handy Andy) or oil/silicone based cleaners (ie Mr Min) on solid wood furniture as they will damage the finishes and can create cloudy marks.

Placing hot items on the wood may result in damage or burning. We recommend that you use coasters and trivets to protect the table tops from hot dishes.

We do not recommend that you place indoor furniture outdoors for any period of time. Outdoor furniture, even for covered outdoor areas, is specially designed to be able to withstand the dramatic temperature changes and moisture in the air. Exposing indoor furniture to outdoor environments could lead to warping, cracks, discolouration and ultimately will weaken the structural integrity of the design over time. Please enquire about our outdoor range if you are in need of outdoor or semi-outdoor furniture.

When used indoors, avoid placing solid wood furniture in full, everyday sun as exposure to sun/UV can cause yellowing, bleaching and light surface cracks.

Heavily airconditioned environments require the use of an humidifier to restore the natural humidity of the air, as extremely dry air will result in cracking / warping of the timber. This is also the case with central heating in cold climate countries.

MAINTENANCE :

When properly taken care of, your indoor piece of furniture should not need much maintenance beyond the above. All of our indoor tables receive a final coat of clear varnish to increase protection from liquids and foods. As such, you cannot re-oil your indoor furniture without first fully sanding off this layer of varnish.

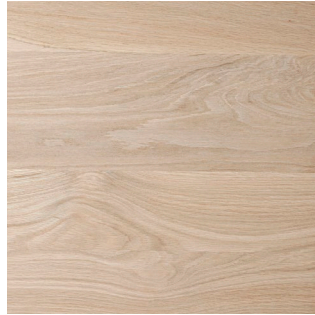
Should you need to sand and re-oil your piece of furniture please contact us first so that we can recommend the course of action particular to your chosen design, timber and finish.

We work with a local oil manufacturer who produces top quality environmentally friendly and non-toxic oil finishes which we can recommend to you based on your order.

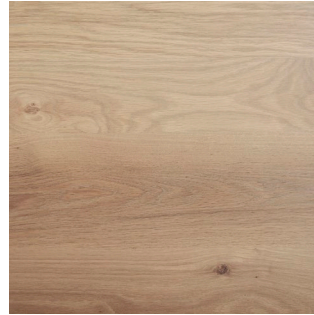
TIMBER SAMPLES :



ash - natural



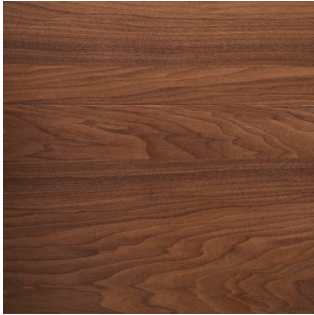
oak - natural



oak - grey oil



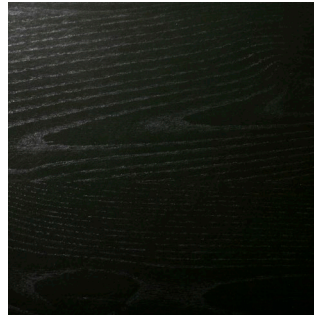
iroko - grey oil



walnut - clear oil

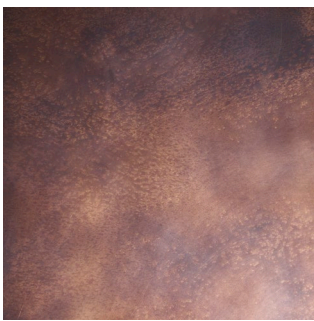


oak - gunmetal

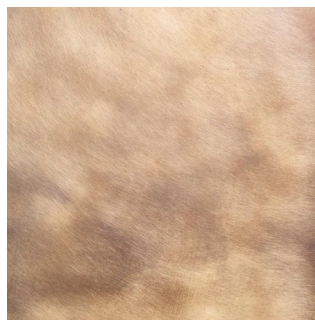


oak - dark charcoal

BRASS SAMPLES :



antique brass



brushed brass



bright brass