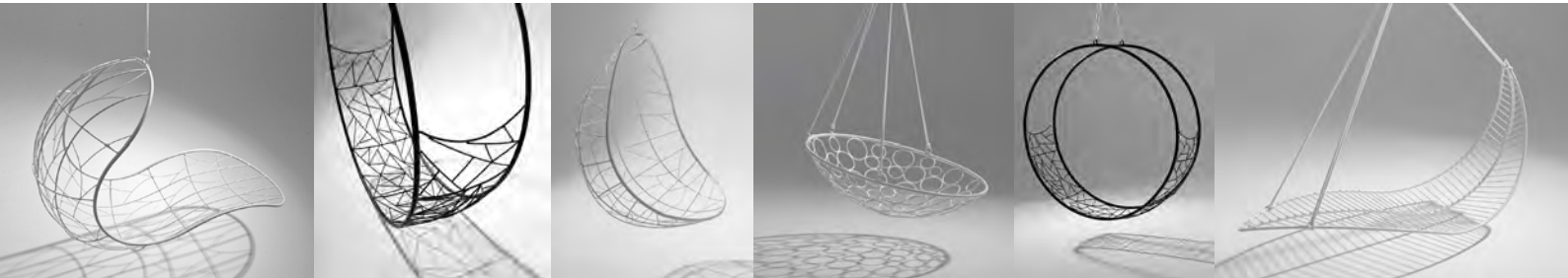






Beautiful hanging swing chairs, loungers and daybeds are the passion of Studio Stirling. They are made from steel and are strong and durable. Each one is made by hand and it allows for each piece to have individualism and uniqueness in some of the pattern detailing due to the variance of craftsmanship. They are ideal for inside or outside use and look gorgeous on a deck, patio, hanging from a branch of a tree or anywhere indoors. They are comfortable and oh so relaxing. A variety of designs and cushion and fabric choices are available. Custom and exclusive designs can be discussed.



Bubble Hanging Chair: Star pattern



Bubble Hanging Chair: Sun pattern - right & Star pattern - left



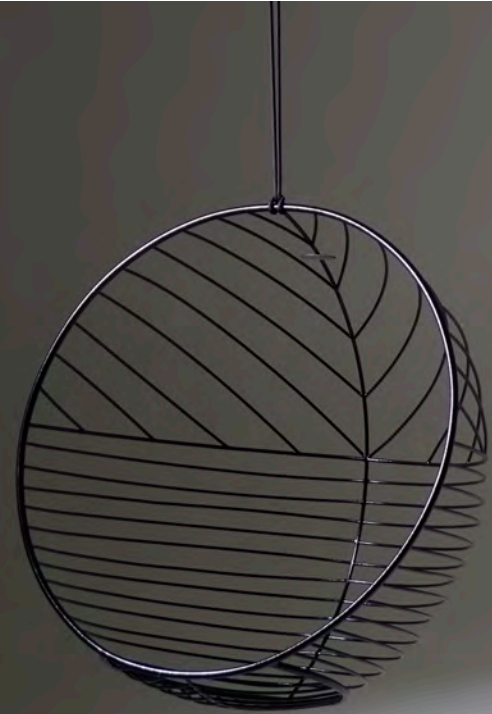
Bubble Hanging Chair: Star pattern in Silver

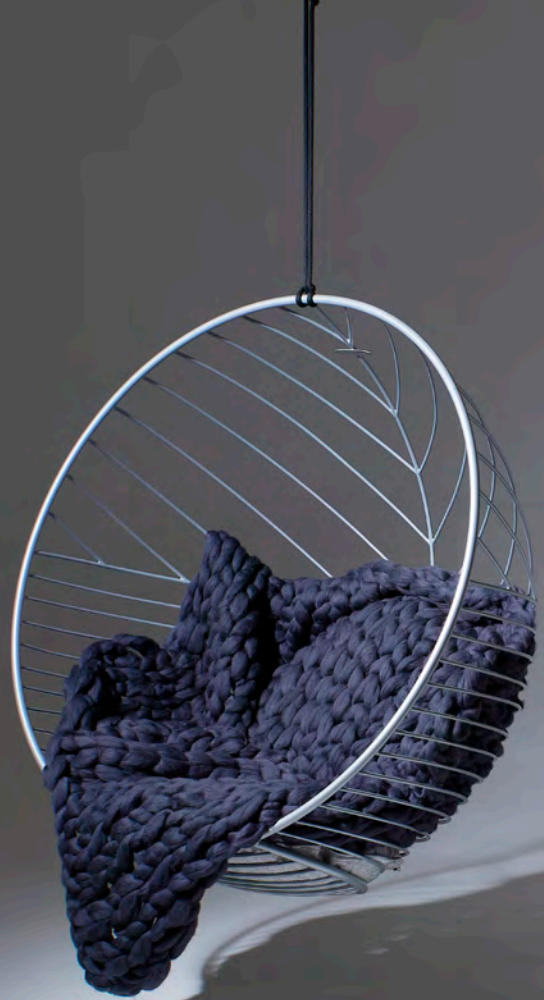


Bubble Hanging Chair: Sun pattern - left & Star pattern - right



Bubble Hanging Chair: Star - left, Sun - middle & Star pattern - right







Bubble Hanging chair - inside patterns: Star, Sun, Lined & Half n Half

Star



Sun



Lined



Half & Half





















Roger Ballen

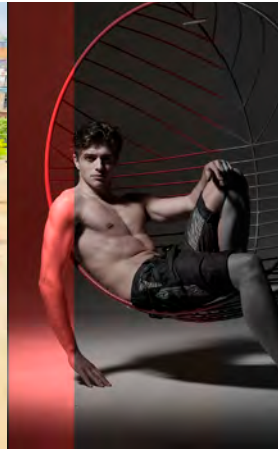
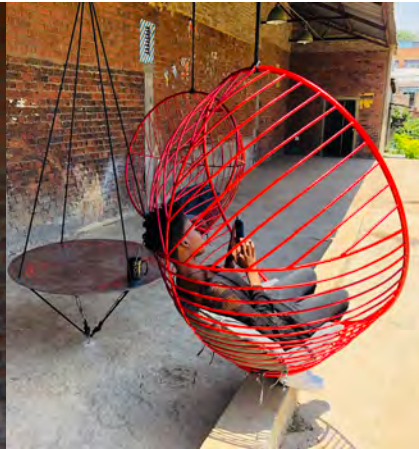
GROWERS AND  
MAKERS MARKET  
< UP STAIRS >  
UPPER PRECINCT >

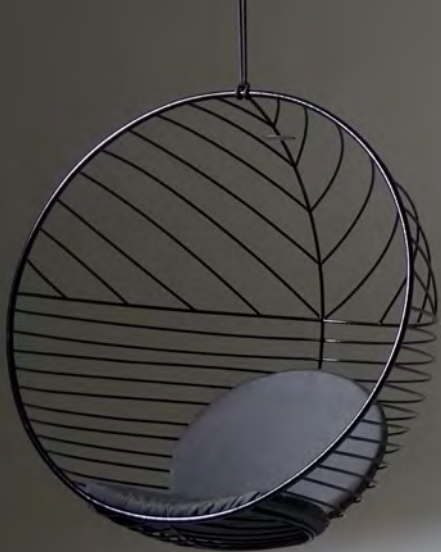
Bubble Hanging Chair: Lined pattern - left & Star pattern - right



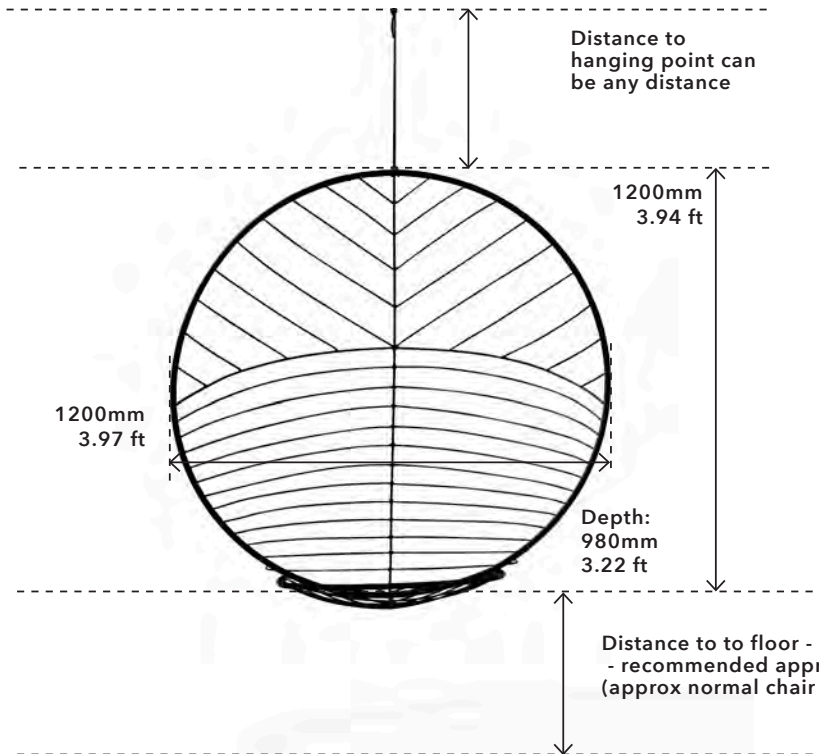


Bubble hanging chair - everyone's happy place :)





## Bubble-specific tions



### Size:

Length - 1200mm	3.94 ft
Width - 1200 mm	3.94 ft
Depth - 980mm	3.22 ft

### Mild Steel

or

Stainless Steel (recommended for high moisture humid salty sea conditions)

Durable

Long lasting

Airflow

Rust protection treatment on mild steel (similar to what is done on chassis of a car)

Powder Coated to international standards

Non flammable

## FULL CIRCLE Stand

- can be made in parts for ease of transport & for smaller crate size (for freight costing)
  - stainless steel recommended when made in parts
- L (facing front/side to side/left to right) 3200 mm / 126"  
W (front to back) 3500 mm / 138"  
H (top to bottom) 3000 mm / 119"







## FULL CIRCLE Stand

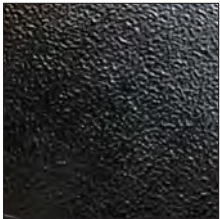
- can be made in parts for ease of transport & for smaller crate size (for freight costing)
- stainless steel recommended when made in parts





Various stands are available - contact us at SARZA for more information.

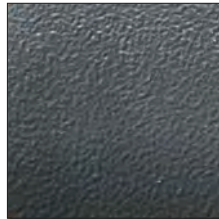
Standard powder coating colours



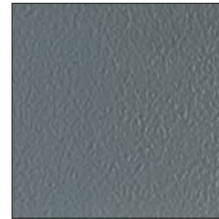
Black Ferrotex



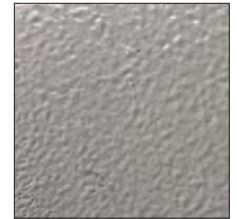
Black Ferrograin



Grey (autumn)



Grey (admarality)



Grey (ocean)



Silver



Antique Silver



White Ferrotex



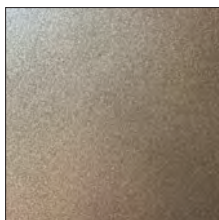
White Ferrograin



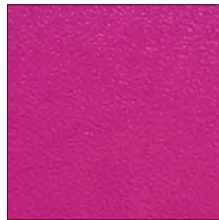
Red Ferrotex



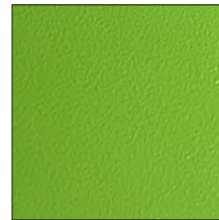
Bronze



Gold



Pink Ferrotex



Green Ferrotex (lime)



Blue Ferrotex

\* Note: Colours may appear different from device to device.

\* Enquire for availability of other colours / or special mixes