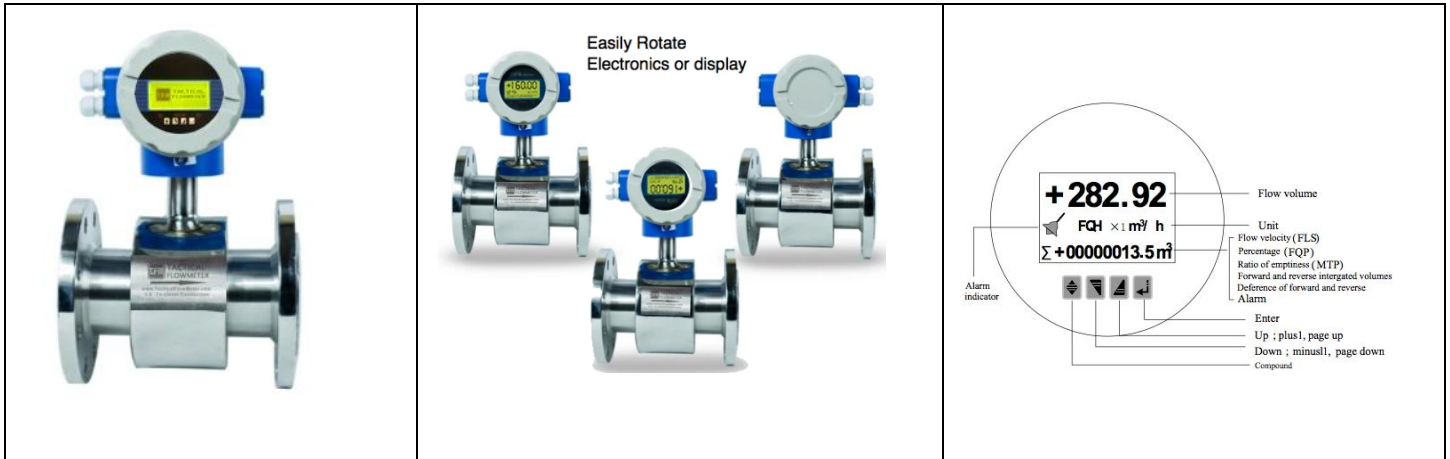


4" 304 SS ANSI 600# RFF MAG meter CutSheet

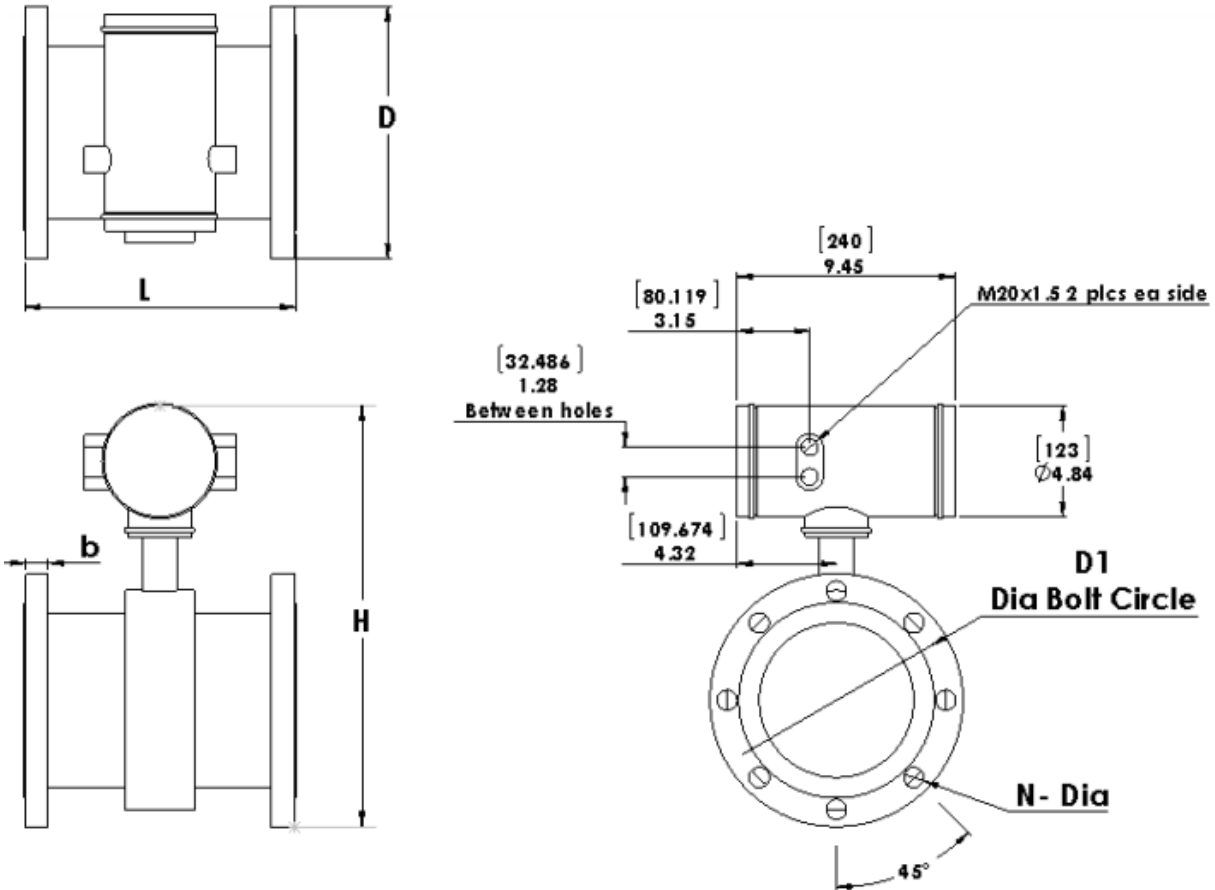


Specifications.

- Electrode Material: 316L SS
- Wetted Materials Teflon, 304 SS, & 316 SS
- Flow Body Material 304 SS
- Flow Velocity .01 - 15 m/s Nominal 0 - 3 m/s
- Water flow ranges from from 0-124 GPM to 0-1866 GPM and anywhere between
- Accuracy: +/- 0.5% of reading in water.
- Repeatability of +/- 0.15% of reading
- 4" 600# ANSI Flange Connections.
- LCD Display
- Temperature:
 - Gas: 14°F (-10°C) to 350°F (180°C)
 - Ambient: 14°F (-10°C) to 140°F (60°C)
- Power Requirement: 24 VDC 20 Watts maximum;
- Output signals: Modbus RTU, 4–20 mA; transmit up to 3000 feet
- 0-10 KHz for flow rate indication
- Digital communications: Modbus RTU
- Proof Pressure 10 MPa, 1,450 PSIG.
- Display: Flow rate, Flow Rate 0-100%, and Total flow
- Wiring connection to enclosure size: M20 x 1.5
- Integral Electronics installation
- Electronics Enclosure: IP65
- Stainless steel electrodes in Teflon

4" 304 SS ANSI 600# RFF MAG meter CutSheet

METER DIMENSIONS



600# ANSI Size	DN Size	GPM @ 10 m/s	L		b		N-Dia		N (# Bolts)	H		D	
			L (Pipe length)		C (flange thick)		Flange Bolt Dia			Meter height		Flange OD	
			inches	mm	inches	mm	inches	mm	inches	mm	inches	mm	inches
4"	100	1244	9.843	250	1.752	44.5	8.504	216	8@ 0.98"	15.35	390	10.63	270

Contact Info:

Tactical Flow Meter

22642 Indian Springs Road

Salinas, CA 93908

 email: Dave.Korpi@TacticalFlowMeter.com

Phone: (831) 455-0418

 Web: <https://www.tacticalflowmeter.com>