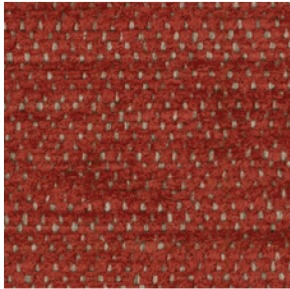
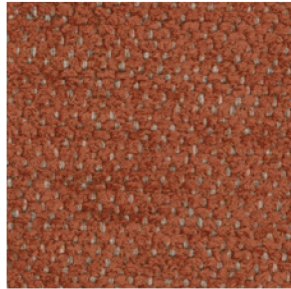




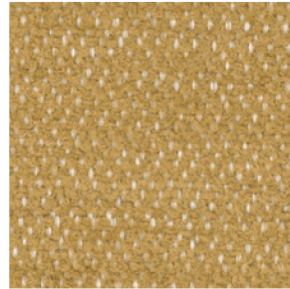
PBLE08 Talc



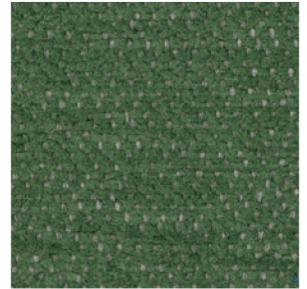
PBLE06 Magma



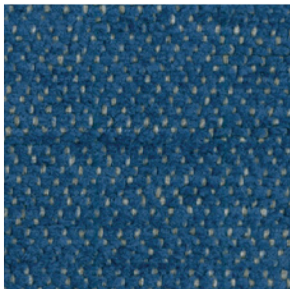
PBLE01 Amber



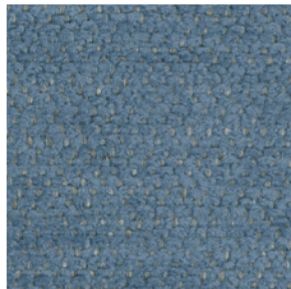
PBLE07 Sandstone



PBLE05 Moss



PBLE09 Topaz



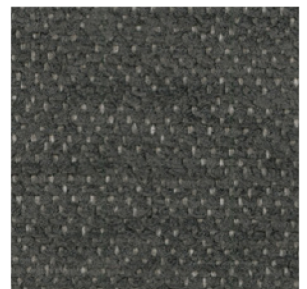
PBLE10 Zircon



PBLE02 Chalk



PBLE04 Gravel



PBLE03 Coal

# Pebble

<b>Application</b>	Chair
<b>Content</b>	55% Polyester, 45% Olefin
<b>Width</b>	54"
<b>Weight</b>	16 ounces per linear yard
<b>Backing</b>	Acrylic
<b>Abrasion</b>	57,000 double rubs (W)
<b>Flame Resistance</b>	NFPA 260 (UFAC Class 1), California TB 117-2013, Section 1 compliant.
<b>Maintenance</b>	W: Clean with upholstery shampoo or mild dry cleaning solvent
<b>Manufacturer</b>	HON

ACT Registered Certification 