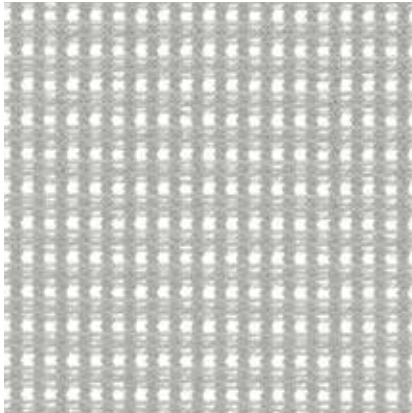


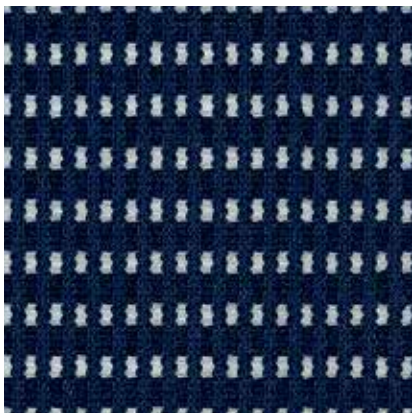
IC Charcoal



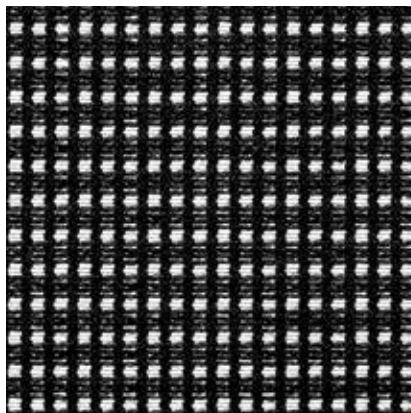
IF Fog



IH Chai



IY Navy



IM Black

ilira®-stretch M4

Application	Chair
Content	63% Polyester, 37% Elastomeric Yarn
Flame Resistance	NFPA 260 (UFAC Class 1), California TB 117-2013, Section 1 compliant, Compatible with California TB 133 (CAL 133) when ordered as an FC option.
Maintenance	Avoid cleaning with strong detergents, solvents and hot steam.
Notes	Models, upholstery, finishes are subject to change without notice.
Manufacturer	HON

ACT Registered Certification 