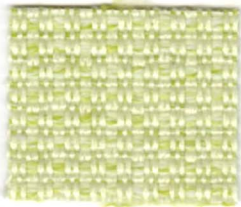
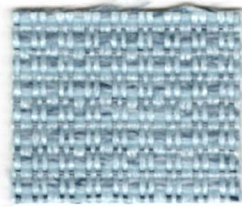


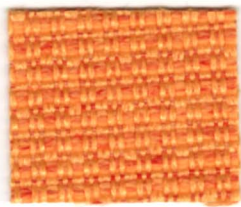
HAML14 Lilac



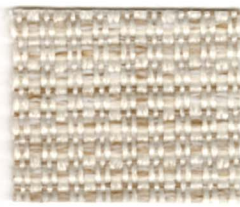
HAML03 Fresh



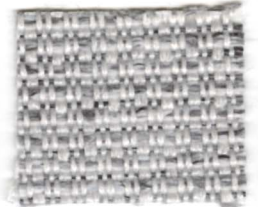
HAML12 Powder



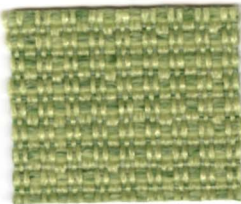
HAML01 Sunrise



HAML11 Biscotti



HAML15 Pepper



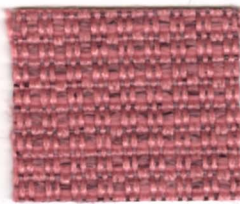
HAML04 Fern



HAML21 Carolina



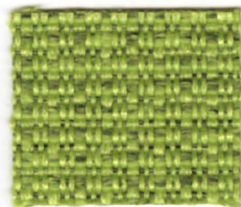
HAML02 Passion Fruit



HAML07 Dusty Rose



HAML18 Cloud



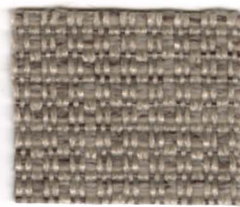
HAML05 Lime



HAML10 Azure



HAML09 Lipstick



HAML19 Granola



HAML16 Dane



HAML06 Esmeralda



HAML20 Oxford



HAML08 Cabernet




HAML13 Chocolate



HAML17 Charcoal

# Hamilton

<b>Application</b>	Chair
<b>Content</b>	100% Polyester
<b>Width</b>	54"
<b>Weight</b>	20.5 ounces per linear yard
<b>Abrasion</b>	100,000 double rubs (W)
<b>Flame Resistance</b>	NFPA 260 (UFAC Class 1), California TB 117-2013, Section 1 compliant, Compatible with California TB 133 (CAL 133) when ordered as an FC option.
<b>Maintenance</b>	W: Clean with water based shampoo or foam upholstery cleaner
<b>Manufacturer</b>	HON

ACT Registered Certification 

**HON**<sup>®</sup>  
The HON Company  
200 Oak Street  
Muscatine, IA 52761  
800.833.3964  
hon.com

© 2021 The HON Company. Form No. H5120 (03/21)  
Repreve is a trademark of Unifi, Inc. and is registered with U.S. Patent  
and Trademark office and with others.  
Models, upholstery, and finishes are subject to change without notice.

**REPREVE**  
  
**REPREVE<sup>®</sup> recycled polyester  
diverts 13 plastic bottles  
per yard from landfills**