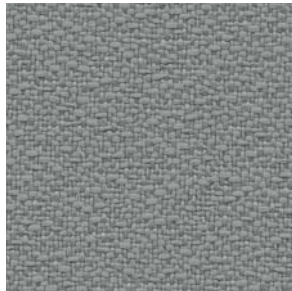


CU66 Tomato



CU22 Frost



CU24 Morel



CU26 Caramel



CU82 Olivine



CU46 Tangerine



CU42 Poppy



CU62 Berry



CU49 Espresso



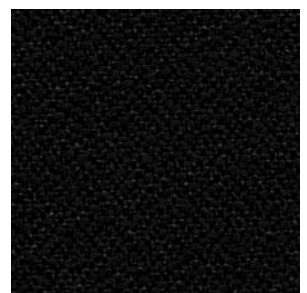
CU96 Glacier



CU90 Cerulean



CU19 Iron Ore



CU10 Black

Fabric Specifications

Flammability

State of California (CS-191-53)
Tech. Bulletin 117, Section E;
This textile is compatible with California Technical Bulletin #133 (CAL 133) when ordered as an FC option.

Fabric Content

100% Polyester

Abrasion

750,000 cycles (cotton duck method)

Lightfastness

40 hours (Class 4.0)

Pattern Repeat

NA

Weight (as woven)

13 oz./linear yd.

Additional Data

Crocking: 3.0 wet, 4.0 dry
Resistance to yarn slippage: Warp - 73; Filling - 82
Tensile strength: Warp - 315; Filling - 200
Tear strength: Warp - 37; Filling - 33

Stain Resistant

Fabric is stain resistant.

Cleaning Code

*W

*(W) Use only water-based cleaning agents or foam. Mix 2 tablespoons ammonia or ammoniated detergent to a quart of water. Wipe stain gently with a cloth dampened with this solution. Continue turning the cloth so you're always using a clean portion.

Color may vary due to screen quality. To ensure complete color accuracy, please order a memo sample.



The HON Company
200 Oak Street
Muscatine, IA 52761
800.833.3964
hon.com

