



Imported by:
STEPHANIE MCNEIL CORPORATION

250 Augusta Avenue - Suite 204
Toronto, Ontario, M5T 2L7
Canada
(647) 879-7837

info@studiotitanamerica.com

studiotitanamerica.com

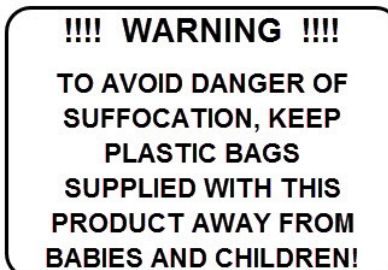
Made in: South Korea



CAUTION: Use supplied leather work gloves and safety glasses when handling the box, when opening the box and when assembling the product.

HAZARD: Strapping is under tension and can jump when cut. Strapping and Buckles, Protective Edging, Plastic Walls, Plastic Caps and Product Components and parts should be handled with care. Work slowly, use extra caution to avoid any sharp edges.

Additional Tools may be Required: The essential tools are included. The following tools are recommended to be on site: Box Cutter, Scissors, Screw Driver, Pliers or Adjustable wrench, Metric Hex / Allen Key set





Transit Damage:

Each package is inspected prior to being shipped from the warehouse to insure that it is in perfect condition. The shipping boxes are constructed using extra thick cardboard. Some packaging includes engineered plastic walls and dense foam to protect and absorb energy from reasonable drops and impacts. If handled without care the boxes will show signs of transit damage. While following the Assembly Steps, carefully inspect the contents.

If anything seems unusual, !!!STOP!!! Send images to: info@studiotitanamerica.com for a second opinion. If there are damaged OR Loose parts, do not assemble the product, you may injure yourself. If the damage is noticeable such as cracks or loose or broken parts contact your dealer for exchange. If the damage is minor or cosmetic and does not compromise the safe assembly or operation of the product send images of the parts that are affected to: info@studiotitanamerica.com. Arrangements will be made to provide you with replacement parts to restore the product to new condition.



Product Identification:



Product Nameplate / Label is located on the vertical column assembly.

The label information is indicated below:

STUDIO TITAN AMERICA

No.[Model Number] - [Manufacture Date]

Imported by / Importe par

STEPHANIE MCNEIL CORPORATION

250 Augusta Ave, Suite 204

Toronto, ON M5T 2L7 CANADA

Manufactured in / Fabrique en

SOUTH KOREA

Label examples are indicated below:





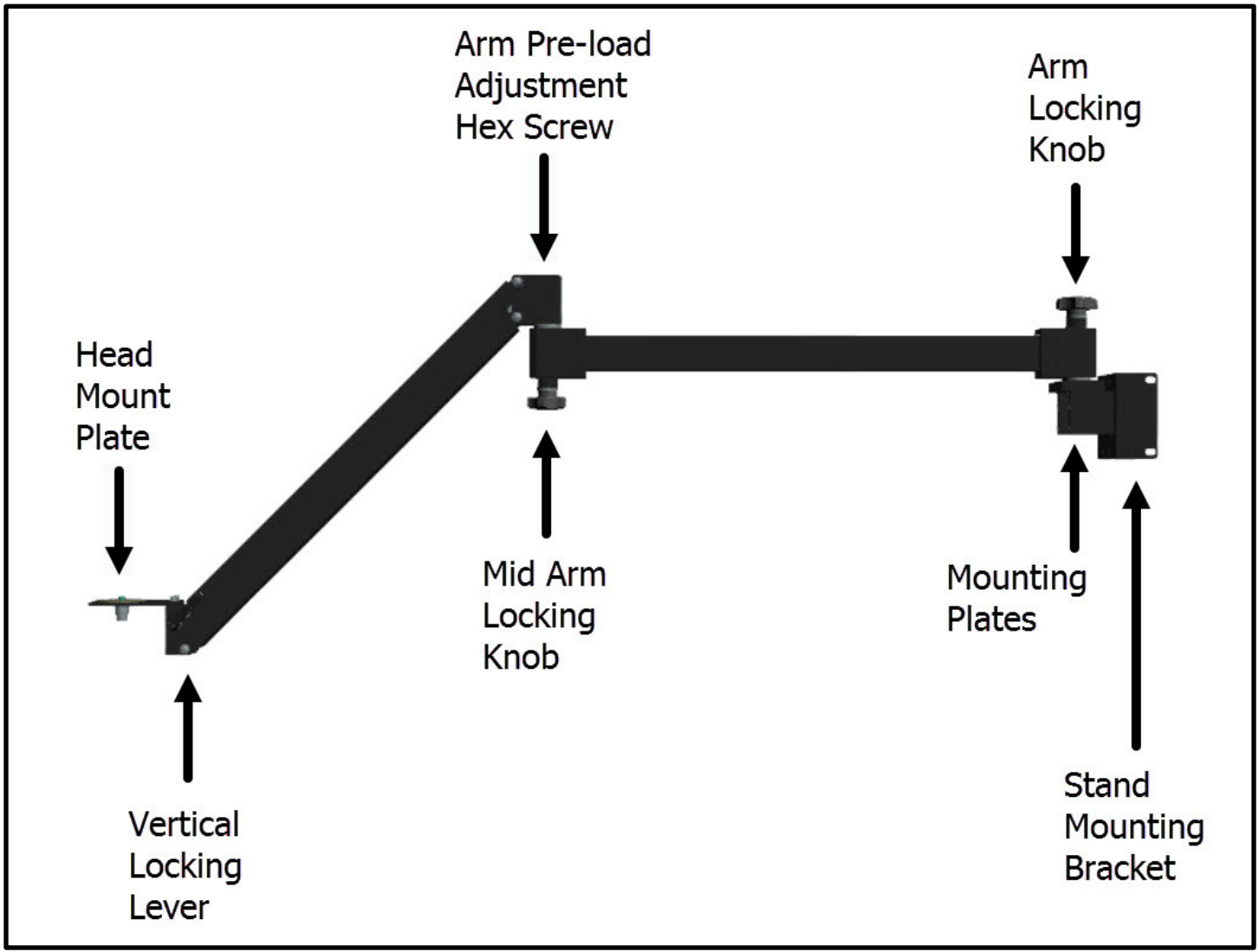
Intended use:

This product is intended for use by professional and commercial photographers in a studio environment with a high ceiling. The products are designed to be used indoors on a floor that is smooth, hard, flat and unobstructed.

CAUTION: This product is not recommended for use by hobbyists or in a household environment with a low ceiling or carpeted floors. Carpeting or pitted surfaces are not recommended because of the increased rolling resistance which can cause the stand to tip over. If the surface is not ideal, the stand must be moved with **CAUTION**, very slowly, using both hands one at the top and the other at the bottom to steady the stand in order to prevent the stand from tipping over. If the surface is not ideal, lower the load to waist level before moving the stand. When using accessories with the stand we also recommend the use of sandbags or optional leg weights attached to the legs at the base to prevent tipping over. Ultimately it's the users responsibility to understand how the stand operates and to use the stand within its specification limits, as intended to insure their own safety and the safety of their equipment. It is also recommended to use a short tether cable to secure the camera to the stand in the event that the head, head plate, attachment stud or camera adapter plate comes loose or fails. Some assembly may be required, we recommend using an assistant during the initial product assembly. Please read all documentation prior to assembly.



Component Identification: STA 06-105 Folding Arm



WARNING
READ ALL INSTRUCTIONS PRIOR TO ASSEMBLY AND OPERATION

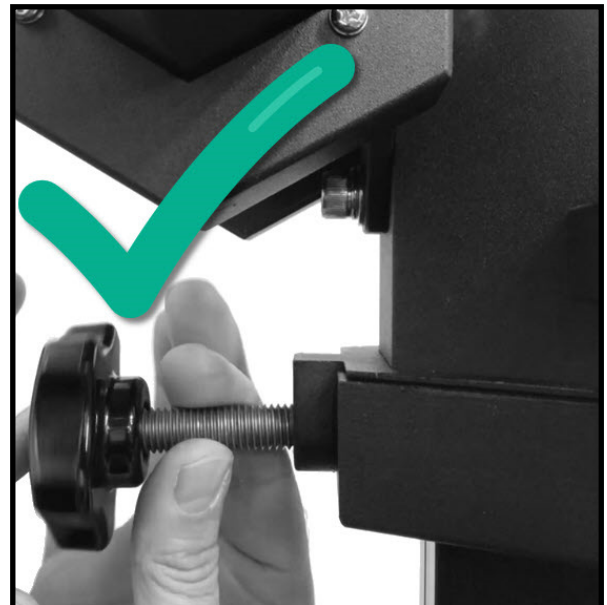
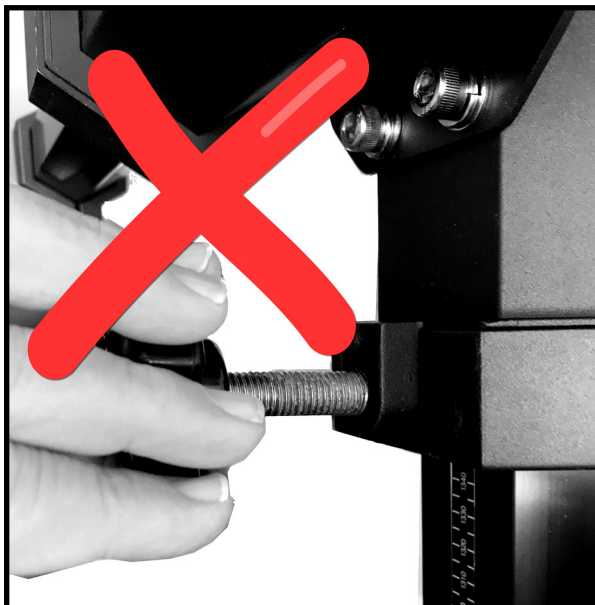
! CAUTION ! Cross Threading Components:

Cross-threading components during assembly is not covered under warranty.

Cross-threading is a term that describes damage that is caused when a misaligned screw or knob thread is forced into a threaded hole. When this occurs, threads are damaged and are no longer capable of proper operation. The remedy is replacement or repair of the damaged component/s.

AVOID cross-threading of mounting screws and knobs during assembly using this easy to follow procedure:

While standing in front of and looking into the threaded hole. Place the screw or knob thread against the threaded hole. Using one hand, hold the thread between your fingers. With the other hand hold the hex key like a pencil or place your index finger in the center of the knob. Align the screw or knob with the hole as indicated in the picture with the checkmark below. Slowly turn it counter-clockwise or left, several turns, until you hear a click or feel the start of the thread. Then proceed slowly, turning clockwise or right, gently using only finger force to tighten the screw or knob. If you feel increased resistance, the threads are not aligned, remove and start procedure from the beginning again.




Component Identification: STA 06-105

 **Studio Titan**
AMERICA

**Arm Pre-load Adjust-
ment Hex Screw**

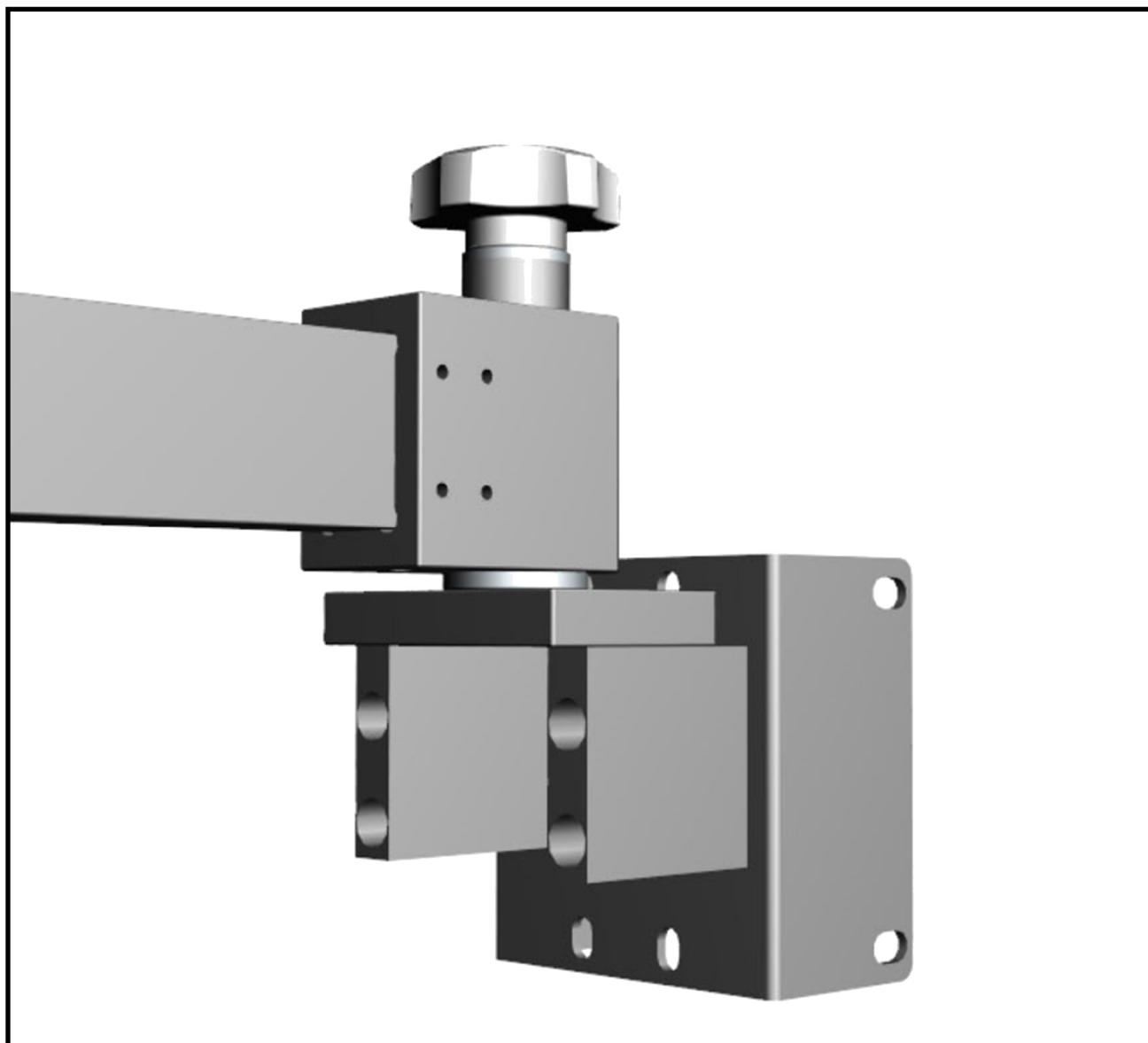


 **WARNING**
READ ALL
INSTRUCTIONS PRIOR
TO ASSEMBLY AND
OPERATION

Component Identification: STA 06-105



Mounting Plates



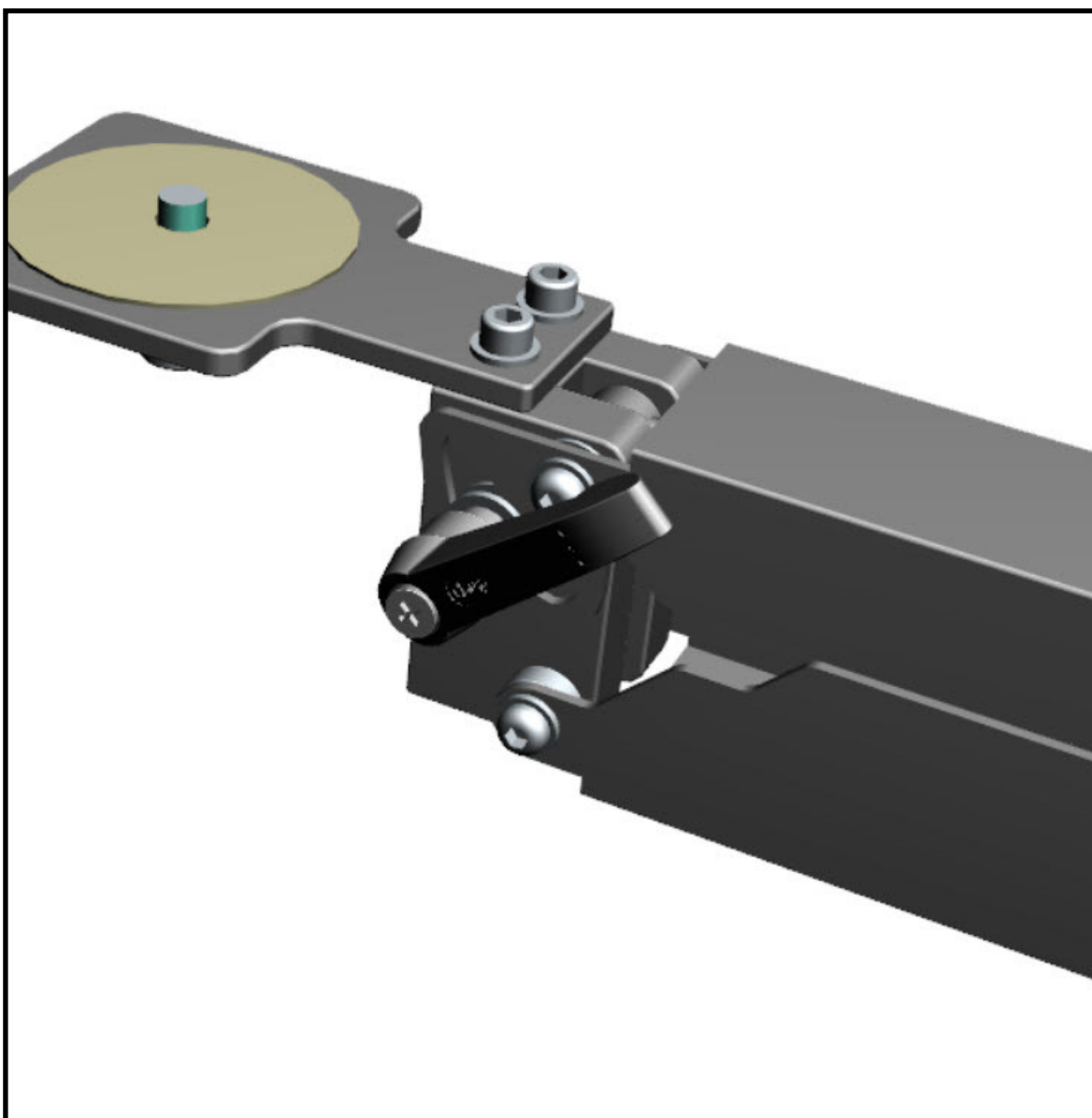
⚠ WARNING

READ ALL
INSTRUCTIONS PRIOR
TO ASSEMBLY AND
OPERATION

Component Identification: STA 01-350R-MK2



Vertical Locking Lever and Head Mount Plate



⚠ WARNING
READ ALL
INSTRUCTIONS PRIOR
TO ASSEMBLY AND
OPERATION

Assembly Steps:



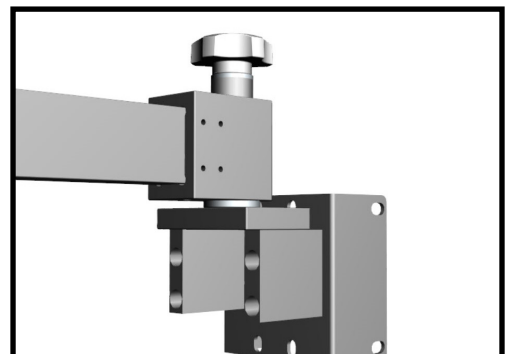
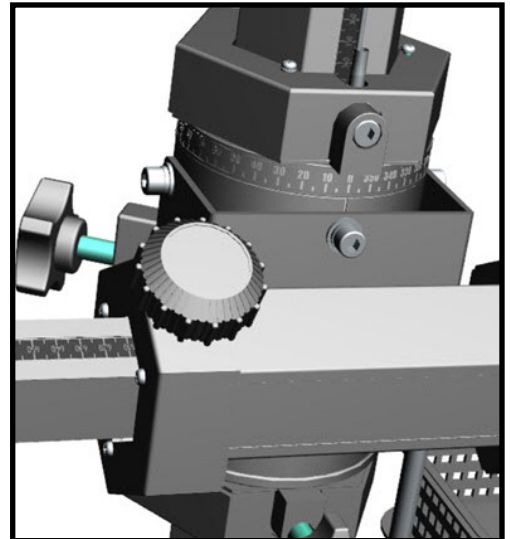
1. The STA 06-105 Folding Arm is designed to be used with the STA 01-350R-MK2 (Rotation) Commercial Studio Camera Stand. The STA 06-105 folding arm can be attached to the Vertical carriage in two configurations, explained below and on the next page.

Configuration A: This configuration is recommended if the STA 06-105 folding arm will be used as the primary arm. In this configuration the internal counterweight will be able to assist with load balancing.

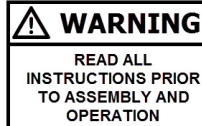
2. Configuration A: Remove the supplied STA 06-105 folding arm mounting bracket. Locate the original Mounting bracket for the Horizontal Arm / Bar that was supplied with the STA 01-350R-MK2 (Rotation). Remove the Horizontal Arm / Bar from the bracket and put the hardware aside. Turn the Arm Locking knob counter-clockwise to detach the Mounting plates from the STA 06-105 folding arm. With the supplied hardware and hex key tool, attach the STA 06-105 folding arm Mounting plates to the STA 01-350R-MK2 (Rotation) Mounting Bracket.

3. Re-attach the Mounting Bracket to the STA 01-350R-MK2 (Rotation) Vertical Carriage. Re-attach the STA 06-105 folding arm to the mounting plates and turn the Arm Locking knob clockwise.

Configuration: A



Assembly Steps:

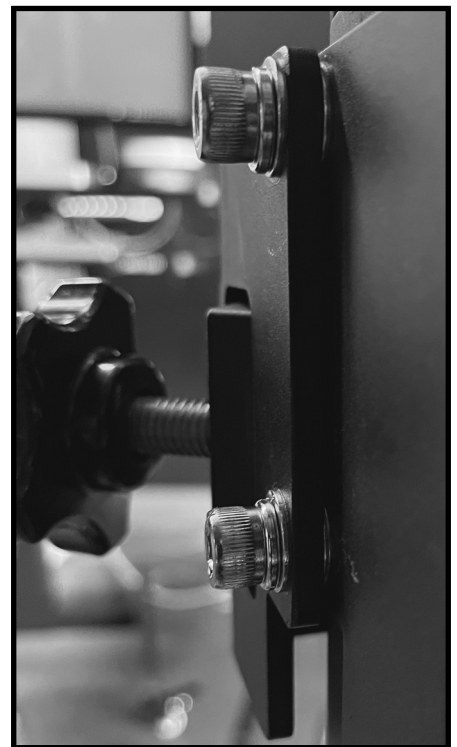


Configuration B: This configuration is recommended when the supplied horizontal arm is NOT used as the primary arm. In this configuration the internal counterweight will not be as effective with load balancing. This configuration allows rapid removal or attachment of the STA 06-105 folding arm.

4. Configuration B: This configuration uses the Mounting bracket that is supplied with STA 06-105 folding arm. This Mounting bracket will be attached to the rear of the stand sharing the same rear mounting holes of the Mounting bracket for the Horizontal Arm / Bar that was supplied with the STA 01-350R-MK2 (Rotation). Use the hardware that is supplied with the STA 06-105 folding arm Mounting bracket. Turn the Arm Locking knob counter-clockwise to detach the Mounting plates and Mounting bracket from the STA 06-105 folding arm.

5. Remove only the 4 Hex bolts and washers [2 on each side of the Horizontal Arm / Bar Mounting bracket] from the STA 01-350R-MK2 (Rotation). Place the 4 Hex bolts and washers in a plastic bag. Remove the 4 hex bolts and washers supplied with the STA 06-105 folding arm Mounting bracket. Place the STA 06-105 folding arm Mounting bracket overtop the Horizontal Arm / Bar mounting bracket, aligning the mounting holes. Hand tighten the 4 hex bolts. Order: bolt, lock washer and flat washer. Note the gap between both mounting brackets. Using 4 flat washers from the hardware in the plastic bag. Insert one flat washer in-between the mounting brackets in each bolt location. Align the brackets and tighten using the supplied hex key with maximum hand force. 105 folding arm Mounting plates to the STA 01-350R-MK2 (Rotation) Mounting Bracket. Re-attach the STA 06-105 folding arm to the mounting plates and turn the Arm Locking knob clockwise.

Configuration: B



Operation, Use & Maintenance:



WARNING

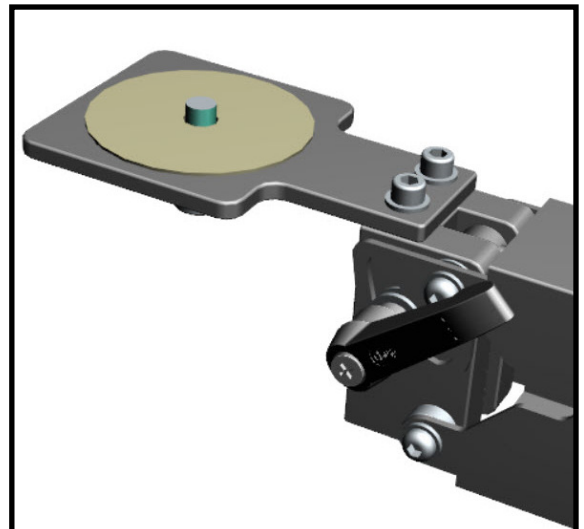
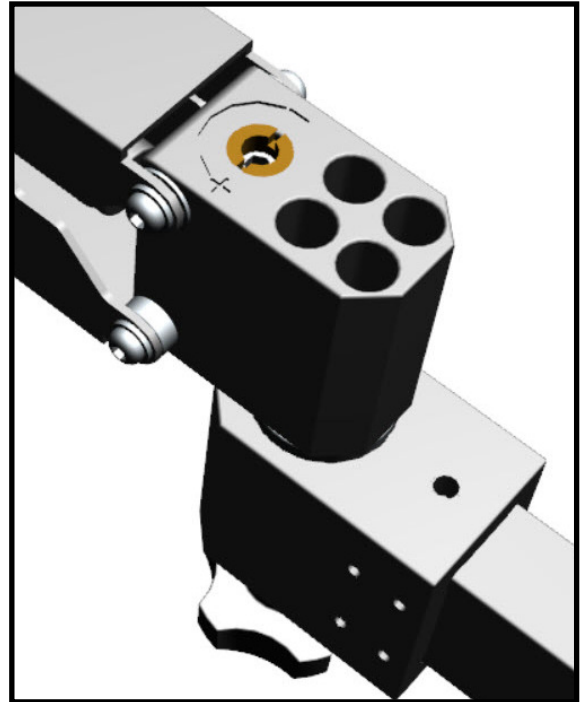
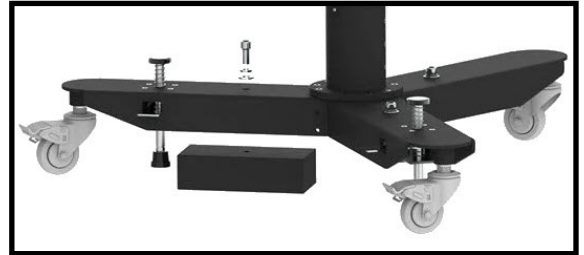
READ ALL
INSTRUCTIONS PRIOR
TO ASSEMBLY AND
OPERATION

6. The STA 06-105 folding arm must be used in conjunction with the optional leg weight set. The recommended leg weight set is: Leg Weight Set STA-01-350LW-15. Without the optional leg weight set the STA 06-105 folding arm may cause the Camera Stand to tip over when extended and loaded.

7. ARM Pre-load Adjustment Hex Screw. With the supplied hex key rotate clockwise to decrease counterweight. Rotate clockwise to increase counterweight. Located inside the arm is a pneumatic cylinder which is used to counterbalance the load / camera that is placed on top of the head mount plate. The process of adjustment is based on trial and error. When balanced, the camera moves both up and down very easily and when released, holds its vertical position.

Adjustment Steps:

- A. Release Vertical locking lever. Add load to head mount plate. IF the load falls, THEN rotate Hex Screw one turn Counter-Clockwise. IF the load goes upwards, THEN rotate Hex Screw one turn Clockwise.
- B. Test and repeat until balanced.
- C. Lock Vertical locking lever.



Operation, Use & Maintenance:



WARNING

READ ALL
INSTRUCTIONS PRIOR
TO ASSEMBLY AND
OPERATION

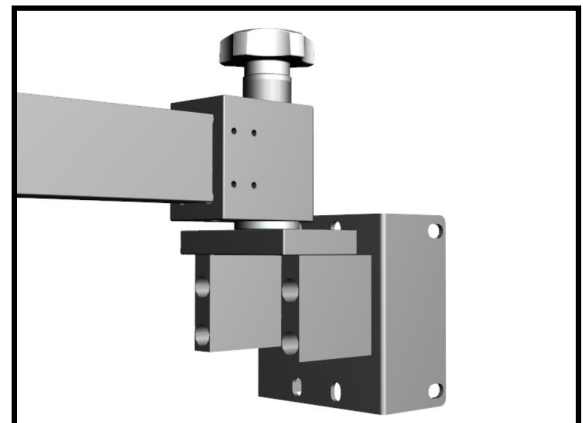
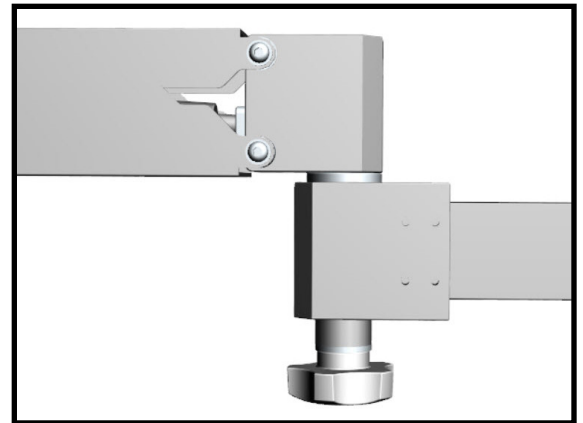
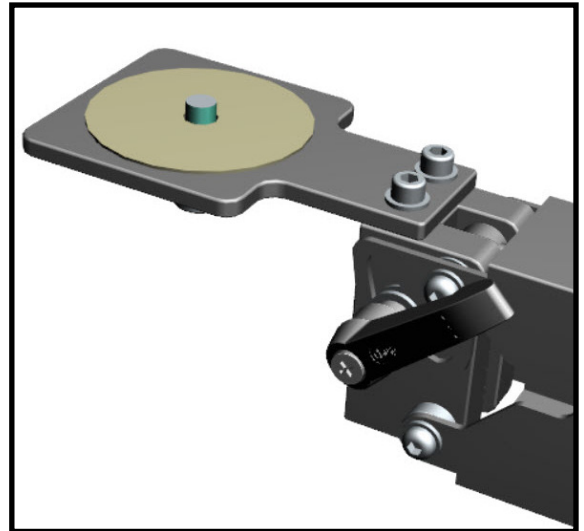
8. Vertical Locking Lever: Turn Counter Clockwise to unlock. Turn Clockwise to lock. When unlocked the ARM can be moved vertically between its upper and lower travel range.

9. Mid Arm Locking Knob: Turn Counter Clockwise to unlock. Turn Clockwise to lock. When unlocked the MID-ARM-JOINT is free to rotate within its circular range of motion..

10. Arm Locking Knob: Turn Counter Clockwise to unlock. Turn Clockwise to lock. When unlocked the ARM-JOINT is free to rotate within its circular range of motion.

11. When not in use store in the upper most "Parking Position". Review this manual with all Studio personnel prior to operation.

12. Re-tighten all fasteners AGAIN. Re-tighten fasteners after the first shoot. Tighten yearly.



Theory of Operation:



The STA 06-105 folding arm was developed in conjunction with the MET in NYC, USA. The primary design objective was to facilitate 360 spin photography of large permanent statues and installations using two 180 degree set-ups around the subject. It is also used for 360 spin photography using one camera in conjunction with a rotary table. Other applications include forensic studies and Industrial Dual Image Correlation applications.

The Design of STA 06-105 folding arm allows the head mount plate to remain parallel with the floor as the arm is adjusted both vertically and horizontally around the subject. The integrated internal counterbalance is user adjustable. When the Camera is counterbalanced it can be moved without effort, easily and precisely into position. When the user releases the camera it holds its vertical position.

The Arm Locking knobs when released allow the arm to be manipulated within the circular range of motion. When locked the Arm remains stationary or holds its position.



STA 01-350R-MK2 Options and Accessories



• **Options and accessories can be purchased through your preferred authorized retailer or the studiotitanamerica.com website.**

Options:

STA 01-350LW-15 [3 x 15KG/33lb /ea BOLT UNDER - steel leg weights for 01-350MK2 series]

STA 06-105 Specification & Directions for Materials Recycling



- **Total Overall Length:** 1,629mm / 64.13 in
- **Arm Length A from center of camera plate to mid rotary joint of arm:** 797mm / 31.37 in
- **Arm Length B from mid rotary joint to end rotary joint:** 750mm / 29.52 in
- **Counterweight cylinder pressure:** 100kg / 220 lbs
- **Maximum travel angle upwards:** 45 degrees
- **Maximum travel angle downwards:** 45 degrees
- **Camera plate angle:** 0 degrees or parallel to floor (Camera plate angle does not change during movement of Arm)
- **Weight :** 8kg / 17.6lbs
- **Recommended General load capacity :** 4.5kg (10lbs)
- **Camera Plate Hardware:** 3/8th inch - 16 thread
- **Includes one Camera Head Mount Plates as shown**

Options:

-STA-01-390 3-way head

Material composition: The Vertical and Horizontal columns are made of aluminum. Counter weight is S20C steel. The nuts and bolts are made of steel. The casters are polyurethane. This product does not contain lead.

STUDIO TITAN KOREA RESERVES THE RIGHT TO MAKE PRODUCT CHANGES AND PRODUCT ENHANCEMENTS. PRODUCTS SUPPLIED MAY NOT BE DELIVERED EXACTLY AS ADVERTISED OR SHOWN ON THE WEBSITE OR IN THE MANUAL.

- The column box blue outer plastic material is Polypropylene, abbreviated as PP, is a recyclable thermoplastic polymer widely used in many different products. PP is rugged. PP's resin identification code is 5, and it is recyclable.

- Plastic bags are made of LDPE (Low-Density Polyethylene) – Recyclable plastic (check Local Authority) LDPE can be recycled. However, check with your Local Authority to ensure it is recycled in your area. This is described as a hard flexible plastic.

- The Corrugated cardboard box can be recycled at depots, in municipal curbside collection programs and through private recyclers.