



Imported by:  
STEPHANIE MCNEIL CORPORATION

250 Augusta Avenue - Suite 204  
Toronto, Ontario, M5T 2L7  
Canada  
(647) 879-7837

info@studiotitanamerica.com  
studiotitanamerica.com

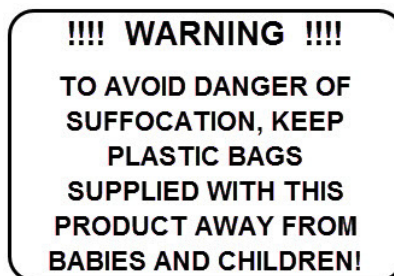
Made in: South Korea



**CAUTION:** Use leather work gloves and safety glasses when handling the box, when opening the box and when assembling the product.

**HAZARD:** Strapping is under tension and can jump when cut. Strapping and Buckles, Protective Edging, Plastic Walls, Plastic Caps and Product Components and parts should be handled with care. Work slowly, use extra caution to avoid any sharp edges.

**Additional Tools may be Required:** The essential tools are included. The following tools are recommended to be on site: Box Cutter, Scissors, Screw Driver, Pliers or Adjustable wrench,





**Rough Handling:**

Each package leaves the facility in perfect condition. The Column boxes are constructed using thick cardboard, some packages include engineered plastic walls, end caps and banded protection corners. The column is packed using dense foam to protect against reasonable impacts. If the box is handled roughly it will show signs of transit damage. Carefully inspect all components prior to assembly. If there are damaged parts, do not assemble the stand. If the damage is noticeable such as cracks or broken off parts contact your dealer for exchange. You can also contact Studio Titan America by email with images if you require a second opinion.

## Intended use:

This product is intended for use by professional and commercial photographers in a studio environment with a high ceiling. The wheels are designed to be used indoors on a floor that is smooth, hard, flat and unobstructed. The Studio Stands with internal counterweight are designed to be used at all times with a load (Camera or laptop shelf or both).

**CAUTION:** This product is not recommended for use by hobbyists or in a household environment with a low ceiling or carpeted floors. Carpeting or pitted surfaces are not recommended because of the increased rolling resistance which can cause the stand to tip over. If the surface is not ideal, the stand must be moved with **CAUTION**, very slowly, using both hands one at the top and the other at the bottom to steady the stand in order to prevent the stand from tipping over. If the surface is not ideal, lower the load to waist level before moving the stand. We also recommend the use of a sandbag or weight attached at the base when conditions are not ideal to prevent tipping over. Ultimately it's the users responsibility to understand how the stand operates and to use the stand within its specification limits, as intended to insure their own safety and the safety of their equipment. It is also recommended to use a short tether cable to secure the camera to the stand in the event that the head, head plate, attachment stud or camera adapter plate comes loose or fails. Please read all documentation prior to assembly.



## Product Identification:

Product Nameplate / Label is located on the vertical column assembly.

The label information is indicated below:

### STUDIO TITAN AMERICA

No.[Model Number] - [Manufacture Date]

Imported by / Importe par

STEPHANIE MCNEIL CORPORATION

250 Augusta Ave, Suite 204

Toronto, ON M5T 2L7 CANADA

Manufactured in / Fabrique en

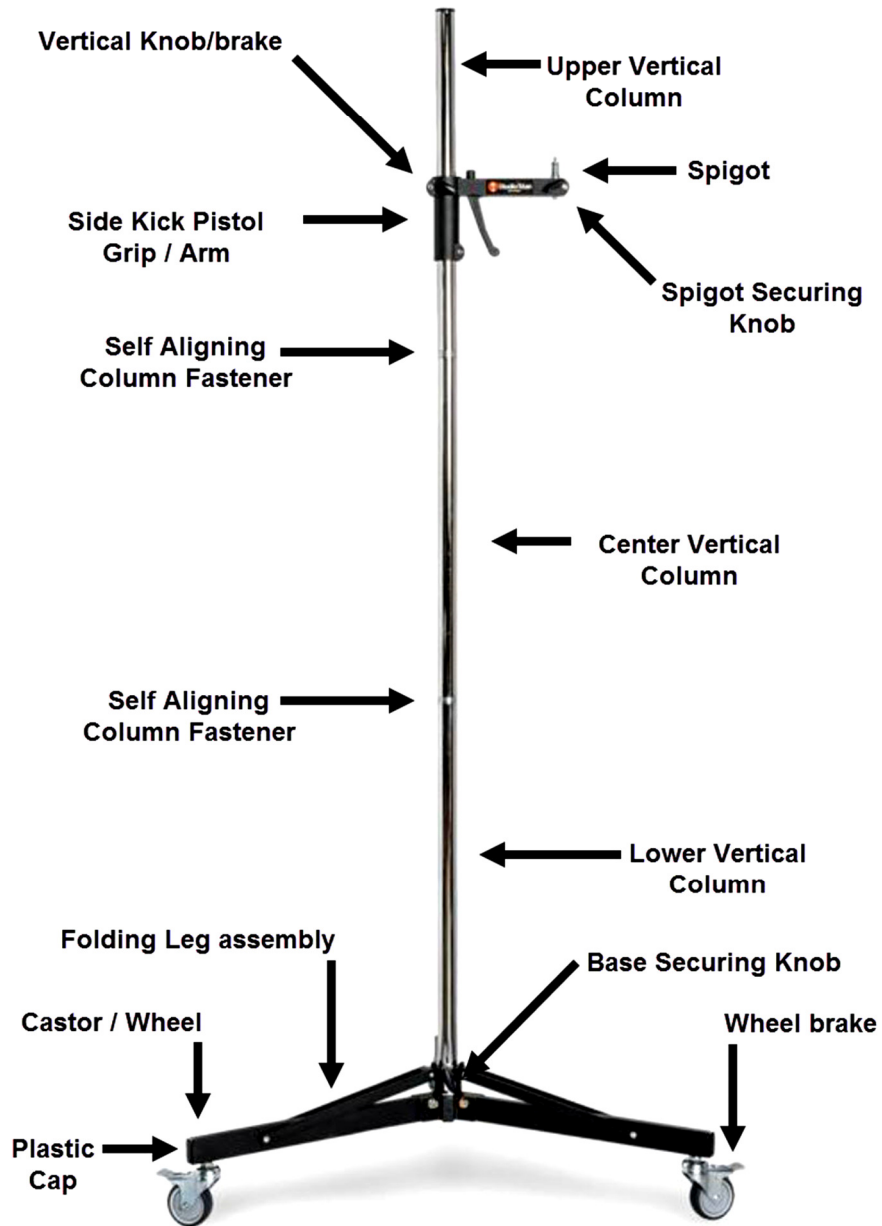
SOUTH KOREA

Label examples are indicated below:



**Component Identification: STA 06-093**

STA 06-093



**Component Identification: STA 06-093**



**Column Sections**



**Self Aligning Column Fastener**

**Component Identification: STA 06-093**



**Complete Kit [assembly of the wheel casters is required]**



**Complete Kit Packed [assembly of the wheel casters is required]**



**Component Identification: STA 06-093**



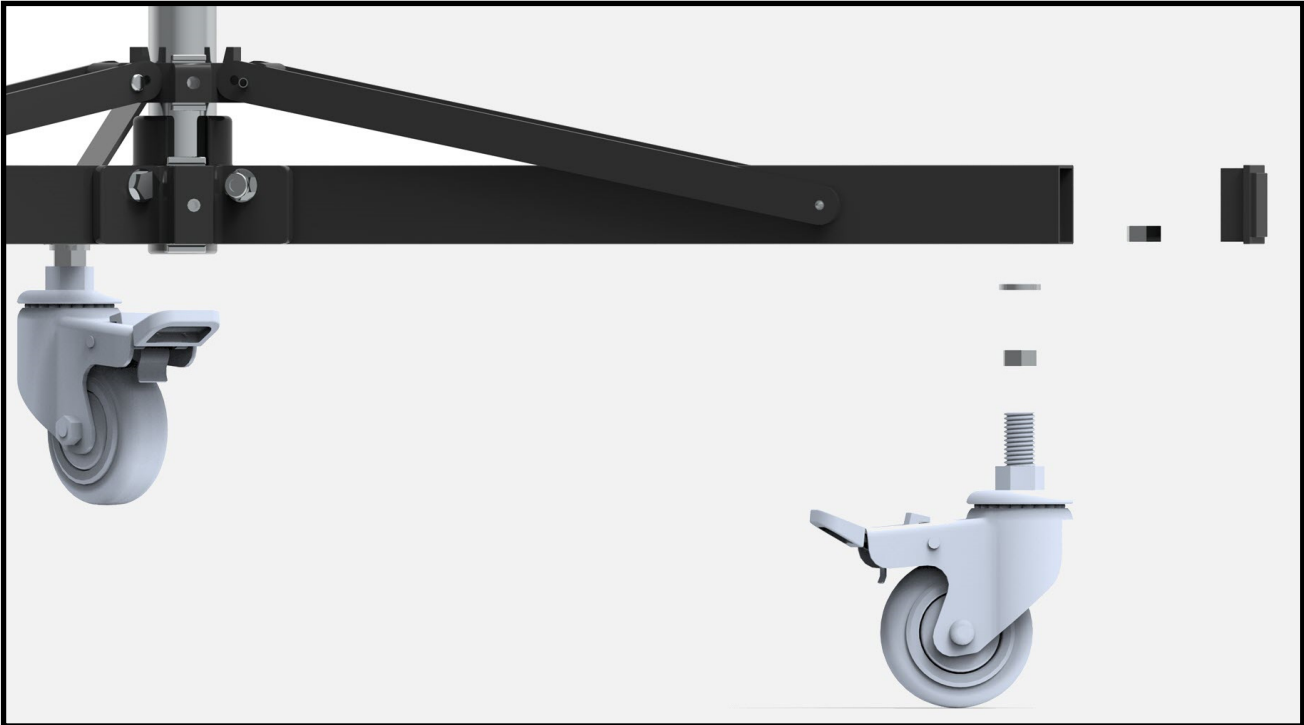
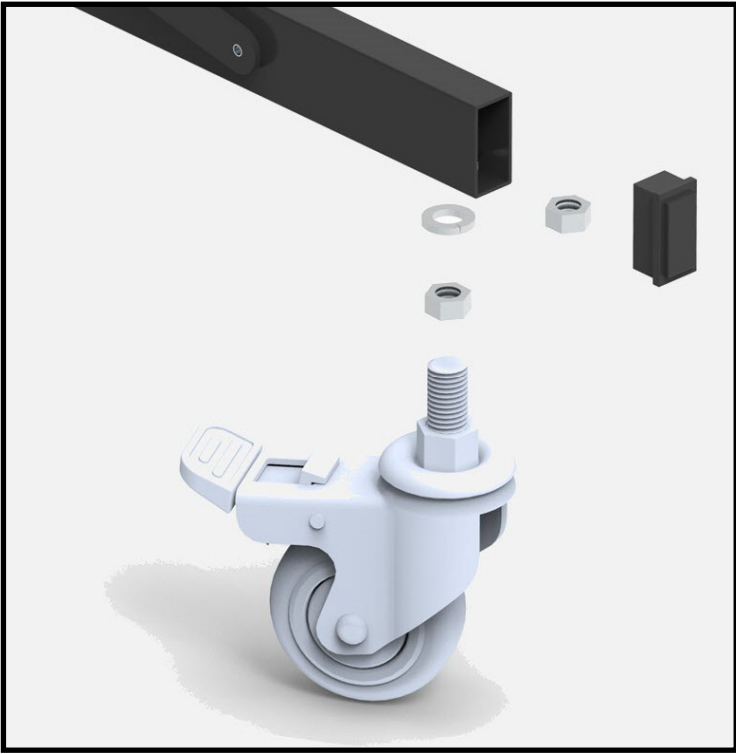
**Current production wheel casters**



**Current production Pistol Grip**



**Component Identification: STA 06-093 Castor Assembly**





**Assembly Steps:**

1. The Stand is supplied with three loose castor wheels which require assembly to the folding legs. Locate the small box with the caster wheels, hardware, plastic cap and tool. Each castor wheel requires two nuts and one washer. Assemble the castor wheel assemblies by attaching and tightening one nut and washer onto the threaded shaft by hand. Insert the second nut into the end of the leg tube and hold it in place over the caster shaft hole. Attach the castor wheel assembly to the leg by inserting the threaded shaft into the caster shaft hole. Rotate the threaded shaft clockwise into the second nut until it is hand tight, using the supplied open ended box wrench tool. Tighten the nut that is fixed to the caster wheel assembly, clockwise until it is hand tight. Insert the black plastic cap into the end of the leg tube. [refer to page 9]
2. Insert the center vertical column Self Aligning Fastener into the Lower Vertical Column receiver and hand tighten. [refer to page 5 & 6]
3. Insert the upper vertical column Self Aligning Fastener into the center Column receiver and hand tighten [refer to page 5 & 6]
4. Place the Side Kick Arm onto the Vertical Column. Pull the pistol grip lever to position it along the Vertical Column. [refer to page 5 ]
5. Secure the Vertical position of the Side Kick Arm by Turning the Vertical Knob/Brake Clockwise. [refer to page 5 ]
6. Secure the Spigot of the Side Kick Arm by Turning the Spigot Securing knob Clockwise. [refer to page 5 ]





**Theory of Operation:**

A studio stand is used by professional and commercial photographers to capture images accurately and repeatably. It provides a rigid and stable platform for professional DSLR imaging cameras. It allows the photographer to focus on the subject matter and image composition instead of holding the camera. It provides a variety of creative options that are unachievable when hand holding a camera. A studio stand is a tool. It provides the user with added technical process steps that brings out the best in High Resolution Sensors. A studio stand reduces vibration which increases image sharpness and clarity. With a head, it allows the user to accurately zero or datum the camera and then maintain camera to subject flatness of field the vertical planes of travel. The flatness of field is maintained as the user moves the stand vertically.

**Tip Over Hazard:**

Caution must be used when moving the stand to prevent tip over. Move the stand slowly and avoid uneven surfaces as well as low and high level objects. Additional caution must be used when the Side Kick Arm with load (Camera ) is used in the upper area above the midpoint of the stand.





**STA 06-093 Specification**

- **Total Height** : 199cm / 78.5" in
- **Working Height Maximum** : 198cm / 78 in (measured from top of PISTOL GRIP to floor)
- **Working Height Minimum** : 31cm / 13.5 in (measured from top of PISTOL GRIP to floor)
- **Shaft Diameter** : 35mm / 1.378 in (material: Steel)
- **Weight Stand - Pistol Grip** : 7kg / 15.5 lbs - 0.7kg / 1.5 lbs
- **Suggested Wheels** : 01-090-20-023
- **Base Diameter** :100cm / 39.3 in
- **Recommended General load capacity** : **20kg (44lbs)**
- **Camera Attachment Stud** : **3/8th inch - 16 thread**
- **Pistol Grip** : distance from center of vertical column to center of Spigot: 19cm / 7.5 inches
  
- **Pistol Grip:** Includes Pistol grip with 5/8th inch spigot [camera can be attached directly to top of spigot using the 3/8th inch x 16 thread]
  
- **Suggested Wheels** : 01-090-20-023 [contact STA for model identification prior to replacement. Updated Casters were introduced mid 2019 and are NOT interchangeable due to the larger thread size. A larger hole is required in the folding leg assembly to accommodate the larger thread size. We recommend that clients replace worn casters with the same caster as originally supplied. We do not recommend modification of stands as it may affect intended / safe operation.]
  
- **Studio Titan RESERVES THE RIGHT TO MAKE CHANGES AND PRODUCT ENHANCEMENTS. PRODUCTS SUPPLIED MAY NOT BE EXACTLY AS ADVERTISED OR SHOWN ON THE WEBSITE OR IN THE MANUAL.**

- Plastic bags are made of LDPE (Low-Density Polyethylene) – Recyclable plastic (check Local Authority) LDPE can be recycled. However, check with your Local Authority to ensure it is recycled in your area. This is described as a hard flexible plastic.
  
- The Corrugated cardboard box can be recycled at depots, in municipal curbside collection programs and through private recyclers.