



Conjure up bewitching baubles with four abracadorable projects!

**★ Jinxed Jewel Ring**

**1** Using one 8" length of cord, thread enough seed beads to wrap around your finger.

**2** Thread both ends of the cord through a starburst paillette, heart shaped crystal bead, and seed bead.



**3** Tie an overhand knot to secure beads. Trim the excess cord.

**4** Marvel at your magical Jinxed Jewel Ring!

**★ Cosmic Charm Bracelet**

**1** Using one length of cord about 18", thread twelve seed beads.

**2** Thread both ends of cord through a larger bead of choice.



**3** Thread six seed beads on each cord, followed by a larger bead of choice. Repeat approximately six times or until desired wrist length.

**4** Slide the bead through the loop to close the bracelet. Trim any excess cord. Cherish your charming cosmic bracelet!



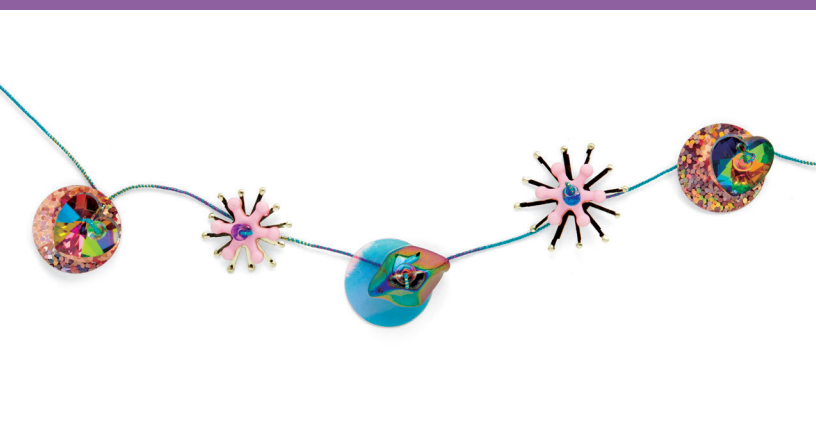


### 3 *Starry Sorceress Necklace*

**1** Using one full length of elastic cord, thread a paillette of your choosing and add a special bead on top of the paillette.



**2** Thread a seed bead of your choosing to hold the special bead in place. Loop the elastic cord back down through the special bead and paillette.



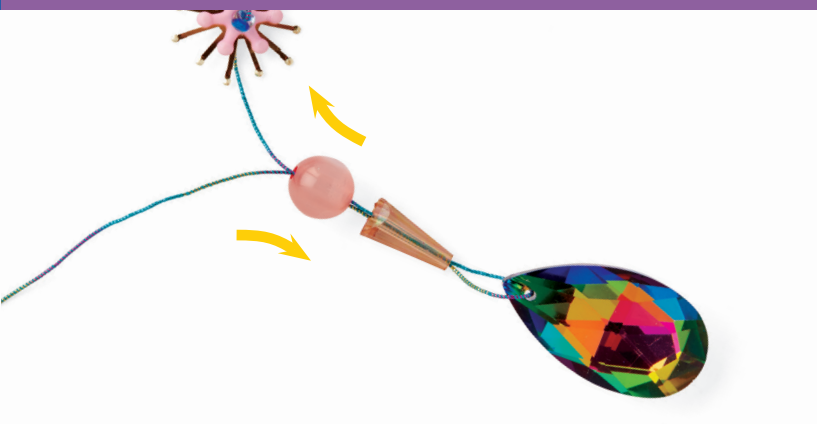
**3** Repeat steps 1 and 2 five times, leaving about 1" in between each beaded section.



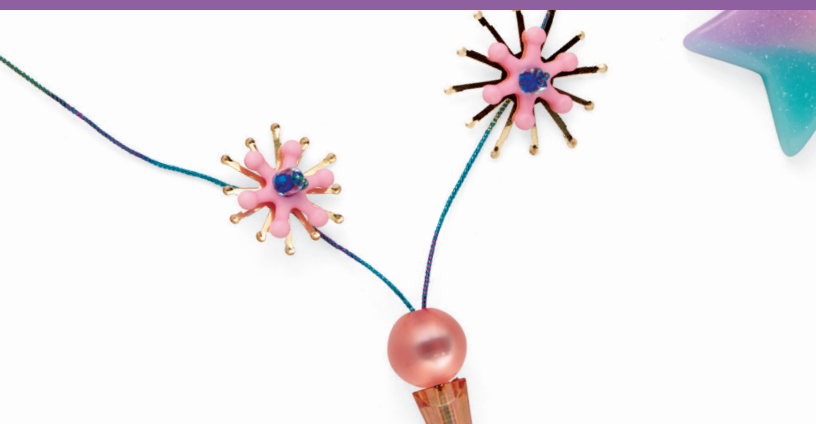
**4** Thread five seed beads and add the star pendant. Thread the cord back up through the five seed beads.



**5** Repeat steps 1 and 2.



**6** Thread a round bead, a cone shaped bead, and the crystal pendant onto the cord. Loop the cord back up through the round and cone shaped beads.



**7** Repeat steps 1 and 2.



**8** Repeat step 4 using the moon pendant. Repeat steps 1 and 2 five times, and tie the ends to finish your necklace! Stargaze upon your luminous Starry Sorceress Necklace!

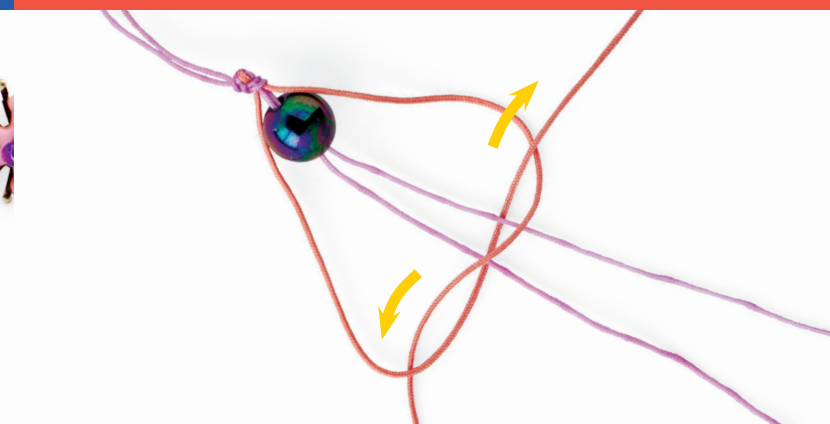


### 4 *Spellbinding Spiral Bracelet*

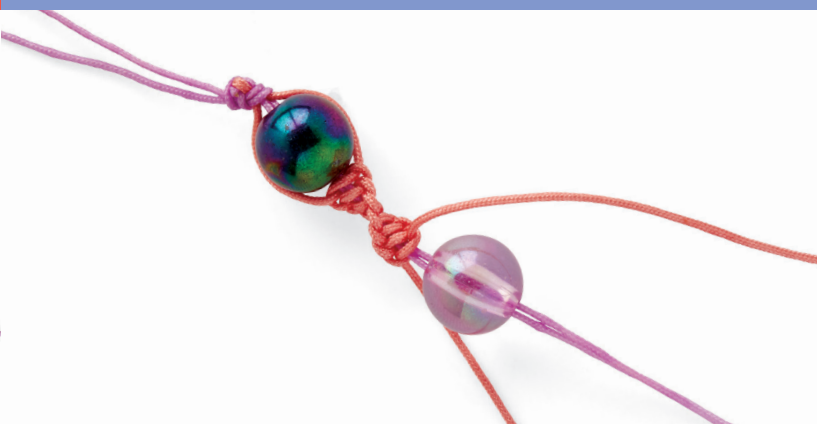
**1** Fold two full length cords in half. Wrap an 8" strand around the two long strands at the midpoint.



**2** Hold the strands together and tie an overhand knot. Thread a round holographic chrome bead on the middle strands.



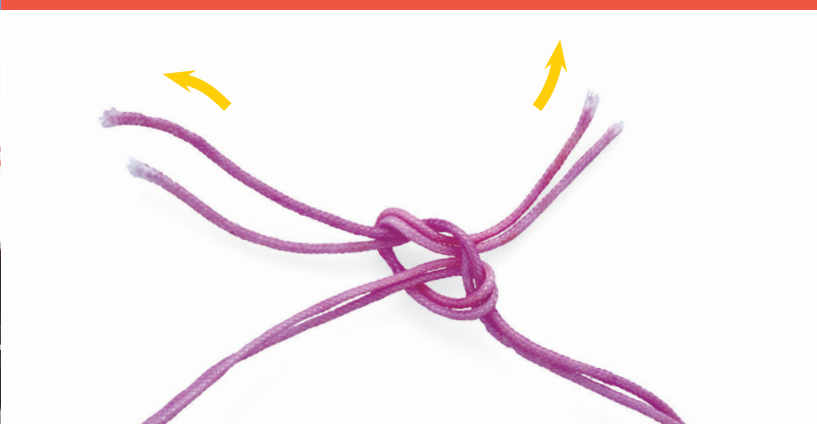
**3** Cross the rightmost strand over the two middle strands and under the leftmost strand. Bring the leftmost strand under the middle strands and over the rightmost. Tighten.



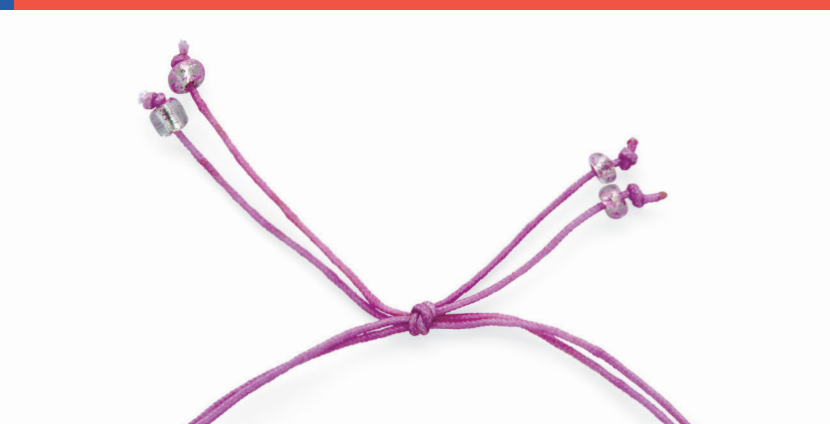
**4** After completing step 3 eight times, add a round bead of choice to the two middle strands.



**5** Repeat steps 3 and 4 four times. Tie an overhand knot and trim to finish.



**6** Tie a double knot to secure the bracelet.



**7** Add seed beads and make knots at the ends of the strands.



**8** Cast a spell with this Spellbinding Spiral Bracelet!