

CA-700

User Manual



Operation Instruction

1. Press on the power button to power on
Insert the test chip to the Test-Chip slot
2. Prepare the coffee for measurement
3. Run the Coffee Analyzer app on your smart phone
Click "START" on the app
4. Use quantitative dropper for sampling coffee
Put the coffee sample to the reagent for chemical mixture
**Use Pipette dropper for higher accurate result
5. Shake the mixture for at least 10 seconds
6. Use another dropper for the mixture
7. Drop the mixture on the reacting area of the Test Chip
Make sure the reacting area is fully covered with the mixture
8. Waiting the result display on the app
Chlorogenic: CGA mg/dl
Caffeine: CAF mg/dl

Product Introduction

The CA-700 portable Coffee Caffeine / Chlorogenic Acid (CGA) Analyzer is an accurate instrument for measuring the caffeine and CGA of coffee with its advanced mobility, accuracy, easy-to-operate feature, you can get the Caffeine and CGA value displayed on your smart phone app within 1 minute.

Package Contents

- CA-700 x1
- 5V Power Adapter x 1
- USB type C charging cable
- Test Chip package x 10
 - Test Chip x 1
 - Reagent x 1
 - Dropper x 1 (for mixing reagent)
 - Quantitative dropper x 1 (for coffee)
- User Manual with Limited Warranty Page x 1

Major Features

- One-click quick measurement
- Premix reagent
- Result in 1 minute
- Bluetooth connection for iOS/Android app

Specification

Reading Range	Caffeine 10 – 500 mg/dL
	CGA
Sampling Size	0.1ml
	Dropper tolerance * Pipette +/- 6% (25 degree C)
	Dropper tolerance * Dropper +/- 12% (25 degree C)
Working Hour	2 – 3 continuous working hour per full charge
Weight	370g
Operating temperature	15~35°C
Storage temperature	5~45°C
Dimension	L: 202mm
	W: 78mm
	H: 40mm
Power adapter	110-240V, 50/60Hz
Charging input	5V, 0.5A, USB Type C

App installation

- iOS: Search "Coffee Analyzer" on App Store
- Android: Search "Coffee Analyzer" on Google Play



Classification of hazardous info.



WARNING

Substance: Coffee detection reaction solution

Hazardous ingredients: Sulfuric acid, oxalic acid, citric acid

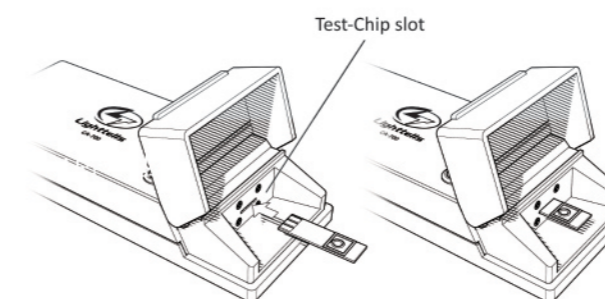
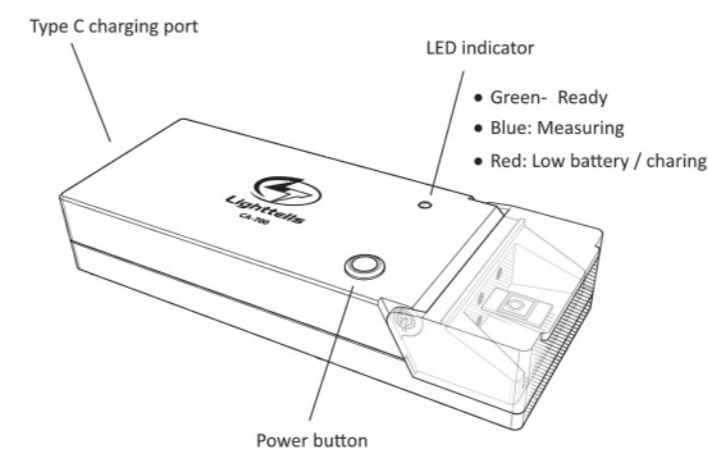
Hazard warning message: Warning

Health hazard: Corrosive/irritating skin substances

Hazard prevention:
 Please operate the product in a well-ventilated place. It is strictly forbidden from eating or drinking during the testing process, if the reagent contacts the eyes or skin, promptly wash (irrigate) the eyes with large amounts of water or seek medical attention as soon as possible.

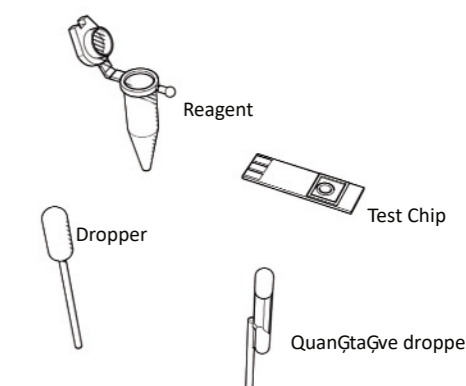
Manufacturer:
 (1) Company : Lighttells Corp.. Ltd.
 (2) Address : 5F, No. 27, Xienzheng 3rd St., Zhubei city, Hsinchu county, Taiwan, R.O.C.
 (3) TEL : +886-3-555-1389

CA-700 Hardware



- Side up the test-chip, plug into the testing slot

Package Contents



Notice

- The testing pack is for Single-Use only, reuse IS NOT RECOMMENDED.
- For stable accurate result, it is not recommended charging while testing. Please stay the CA-700 on a stable plane.

Limited Warranty Card

Model Name: CA-700 Coffee Caffeine Chlorogenic Acid Analyzer

Serial Number: _____

Date of Purchase: _____ YY
 _____ MM _____ DD

Customer Name: _____

Customer Address: _____

Authorized Dealer Name / Stamp: _____

Warranty Information

This Limited Warranty applies to LIGHTTELLS product model name CA-700 purchased from an authorized LIGHTTELLS dealer by the original purchaser for normal use and not for resale. LIGHTTELLS warrants that a CA-700 product is free from defects in materials and workmanship, with the exceptions stated below. This limited warranty lasts for 1 year from date of purchase, depending on when and where it was originally purchased. A valid proof of purchase may be required to prove eligibility. If you do not have a valid proof of purchase, the limited warranty period will be measured from the date of sale from LIGHTTELLS to the authorized distributor.

The limited warranty does not cover damage resulting from improper or unreasonable use or maintenance, misuse, accident, modification or alteration to hardware or software, tampering, unsuitable physical or operating environment beyond product specifications, or failure caused by a product for which LIGHTTELLS is not responsible. There is no warranty of uninterrupted or error-free operation. There is no warranty for product with removed or altered identification labels. LIGHTTELLS DOES NOT PROVIDE ANY OTHER WARRANTIES OF ANY KIND, INCLUDING, BUT NOT LIMITED TO, THE IMPLIED WARRANTIES OR CONDITIONS OF MERCHANTABILITY AND FITNESS FOR A PARTICULAR PURPOSE. SOME JURISDICTIONS DO NOT ALLOW THE LIMITATION OF IMPLIED WARRANTIES, SO THIS LIMITATION MAY NOT APPLY TO YOU. LIGHTTELLS is not responsible for returning to your product which is not covered by this limited warranty.