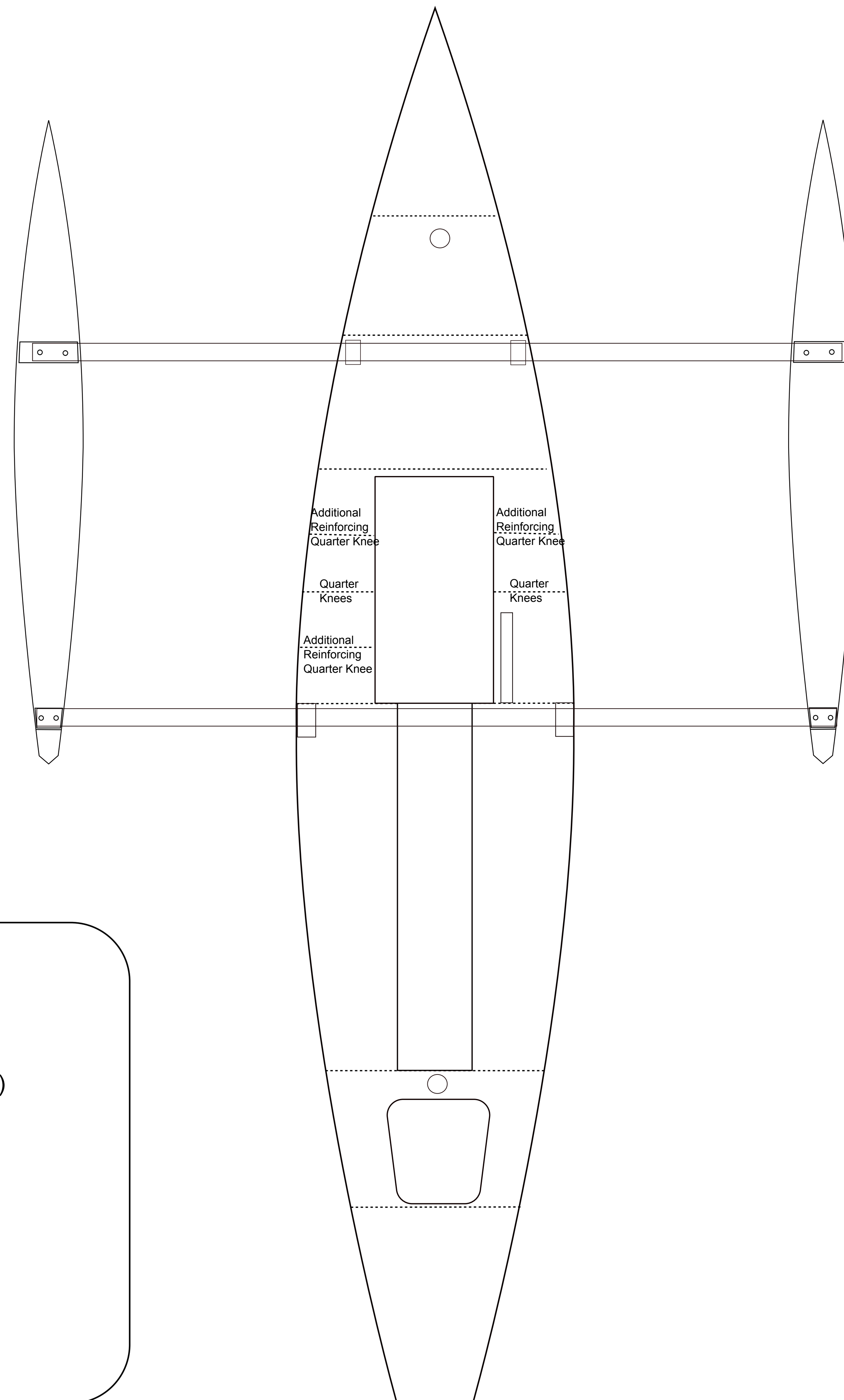


RowCruiser Auxiliary Sailing System Plans



Plans Index

- 1) Study Plans
- 2) Ama Mounts
- 3) Mast Supports (Plans)
- 4) Mast Supports (Kits)
- 5) Foils Templates
- 6) Ama Hull Panels and Foils (large sheet)

Ama Characteristics

Length Overall:	8'	(244 cm)
Beam:	10.5"	(26.7 cm)
Weight (each):	9.8 lbs	(4.5 kg)
Displacement:	2.1 cubic feet	(60 liters)

Additional Characteristics

Weight of Akas:	9.4 lbs
Total Sail Area:	78 sq. ft
Main Sail Area:	48 sq. ft
Mizzen Mast Sail Area:	30 sq. ft
Total Weight of Fully Rigged Sailing RowCruiser:	230 lbs