

Single sheave truck, cast aluminum revolving, non-fouling, internal halyard truck

1/8" x 7x19 Mil-C-5424
Stainless steel aircraft cable

Model ECA30 IH LFP

Standard flag arrangement: 5' x 8'

Neoprene coated 2" diameter
steel counterweight

Nylon beaded retainer ring

Gearless, self locking direct
drive winch with six
tumbler cylinder lock

Aluminum flash collar

3000 PSI concrete

Hardwood wedges
(supplied by others)

Dry sand tightly tamped
after aligning pole

Foundation sleeve -16 ga
hot dip galvanized steel

Steel centering wedges

1/4" Steel base plate

1/4" Steel support plate
welded to grounding spike

Exposed height: 30'-0"

Tapered portion: 17'-3"

Overall length: 33'-0"

Access door: 4' - 0"

Foundation: 3'-6"

3'-0"

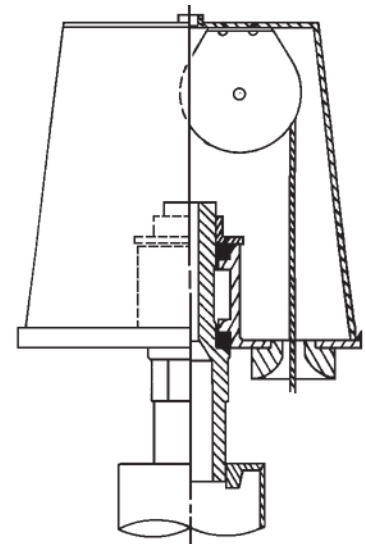
Straight portion: 15'-9"

6"

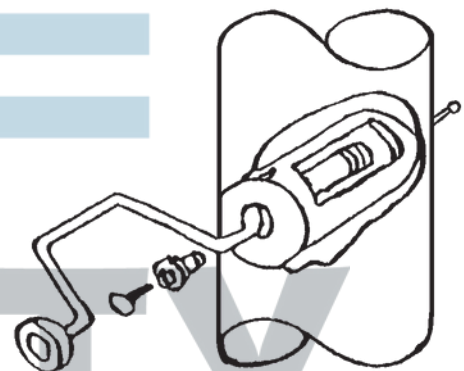
12"

16"

30"



Revolving non-fouling internal halyard truck, cast aluminum body, 26 stainless steel ball bearings, and 2-1/2" diameter plated steel sheave.

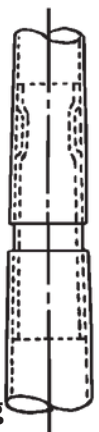


Winch Detail

All shafts with overall
length of more than
38'-6" are shipped in
two sections.

Each section matched marked
for field assembly. Exposed
portion of jam sleeve must
be well lubricated prior to
assembly.

1-1/2" maximum shop
gap allowed for field fitting
(ram for tight joint)



Project:	Ground set tapered aluminum flagpole: ALLOY: 6063T6	www.LibertyFlagpoles.com	Date:
Location:	Exposed height: 30'-0" Overall height: 33'-0"	800-314-2392	Revision:
Architect:	Ship in 1 section Butt diameter: 6"	9 Commercial Dr	
Contractor:	Top diameter: 3-1/2" Wall thickness: .156"	Hampden MA 01036	
Customer:	Finish: 100 grit polish	sales@Libertyflagpoles.com	Job: