



Installation Instructions

AQ-4000-DVPI Countertop Water Filter

White, Black, and Brushed Steel finishes

Welcome to the Aquasana experience. You are about to enjoy clean, clear water and the peace of mind that comes from knowing award winning filter technology is working for you.

Installation must comply with state and local laws.

Contents



Filter unit with snap-on cover



Filter cartridges (A & B) pre-installed in filter unit (Model no. AQ-4035)



Threaded cartridge caps (A & B) and "O" rings pre-installed in filter unit



Metal faucet adapters (2 sizes), rubber washers* (not included in or covered by the system certification)



Faucet diverter valve and hose assembly



High sediment pre-filters

Model: AQ-4000-DVPI

Replacement cartridge: AQ-4035

Rated service flow: 0.5 gpm

Max working pressure: 80 psi (5.62 kg/cm²)

Min working pressure: 20 psi (1.40 kg/cm²)

Max operating temp: 90° F (32.2° C)

Min operating temp: 40° F (4.44° C)

Max capacity: 1,700 Liters



System tested and certified by NSF International against NSF/ANSI Standard 42 and 53 for the reduction of the claims specified on the Performance Data Sheet and at www.nsf.org.



System tested and certified by WQA against NSF/ANSI 42 and 53 for the reduction of the claims specified on the Performance Data Sheet.

Do not use with water that is microbiologically unsafe or of unknown water quality without adequate disinfection before or after the system. Systems certified for cyst reduction may be used on disinfected waters that may contain filterable cysts.



The AQ-4000-DVPI is available in three finishes.

Stop! Does your faucet have a pullout sprayer?

Unfortunately, Aquasana drinking water filters do not fit on these faucets. In order to have filtered water in your home, please consider our Under Counter filter with a faucet that matches your decor!

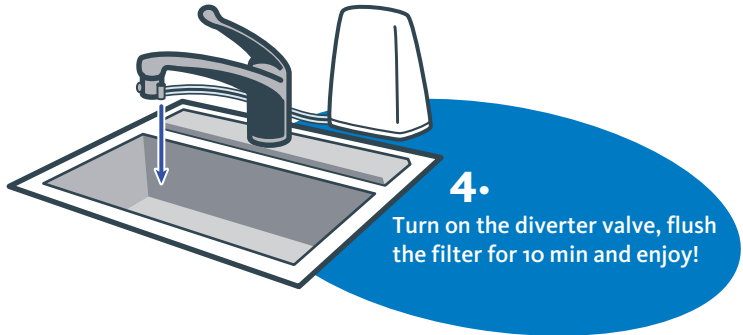
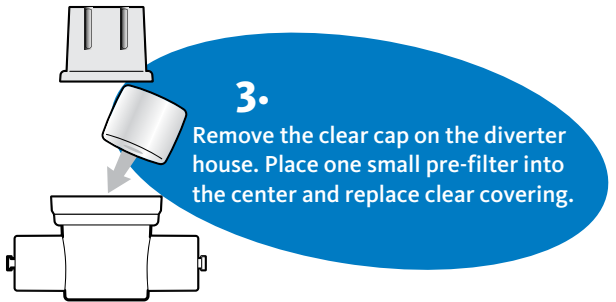
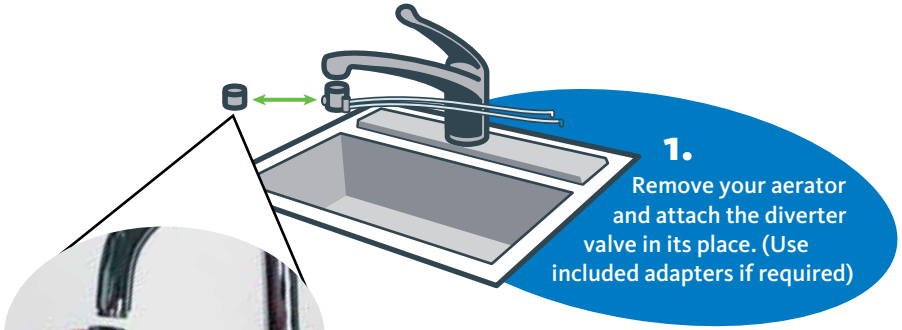




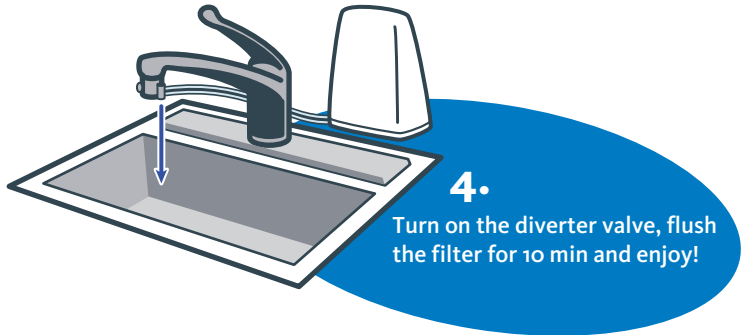
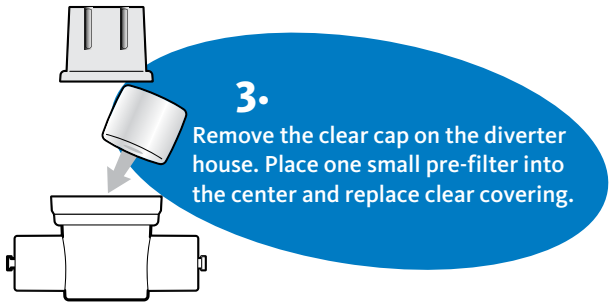
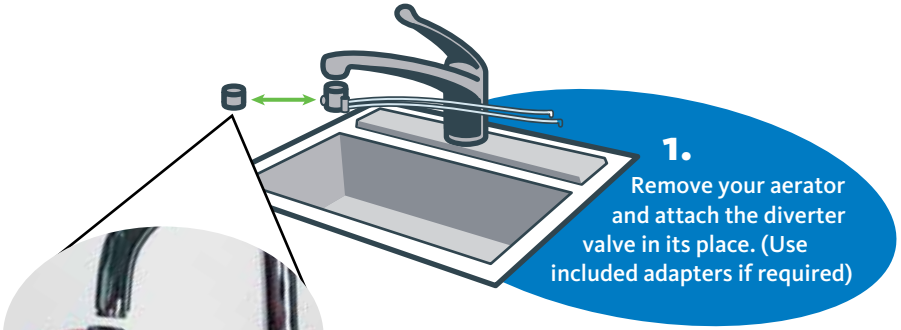
AQ-4000-DVPI in white finish shown

For the first 72 hours, the faucet diverter valve will drip intermittently, until the filters become fully saturated. Once they are saturated you should anticipate a residual flow of water each time you use the filter, as the system is vented and designed to clear the line.

Easy to install



Easy to install



Operating

Your filter comes pre-assembled with cartridges you won't need to change for six months, or 1,700 Liters.



Turn on **cold** water.

Pull pin on diverter valve for clean water. Turn water off when done. If pull pin does not retract, push pin in once water is off.



Precautions:

Aquasana is not liable for consequential or incidental damages due to improper installation.

- **Filter is only to be used with cold water.**
- Never use this system on constant-pressure applications such as ice makers or drinking fountains.
- If the faucet diverter valve does not fit, you will need to install one of the metal faucet adapters before attaching it.
- Make sure the rubber washer is in place inside the chrome swivel collar on the diverter valve.
- If you experience a leak at the hose connection, disconnect and re-seat the hose.
- * Supplied metal faucet adapters and seals are not included in or covered by the system certification.



Pure Satisfaction

You will enjoy a one-year warranty on your purchased product. Thank you for choosing Aquasana!

Don't Void Your Warranty:

This filter system is designed and tested for use with genuine Aquasana parts including replacement filters and all hardware (diverter valve). Use of parts from other manufacturers may result in loss of contaminant reduction performance, system damage or failure. Use of parts from other manufacturers will also void your warranty. Please contact our local distributor or call 2601 1101 for all replacement parts.



Manufacturer:

Aquasana, Inc.

6310 Midway Road, Haltom City, Texas 76117, USA

Sole Distributor in China, Hong Kong and Macau:

Computime China Distribution (Hong Kong) Limited

9/F, Tower One, Lippo Centre, 89 Queensway, Hong Kong

Customer Service Hotline: (852)2601 1101

Email: enquiry@aquasana.com.hk

