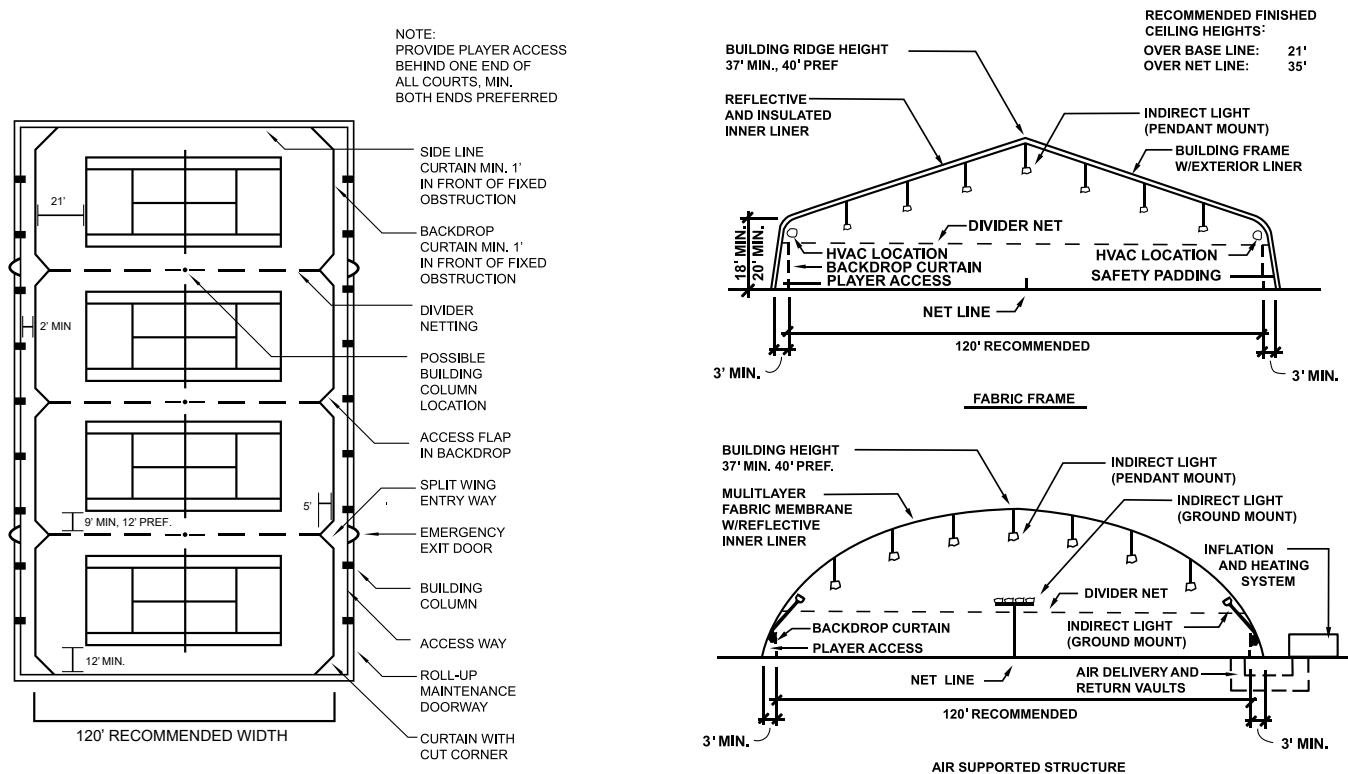


# General Measurement Instructions

Always start with a written layout of the facility.

- All dimensions must be on the layout.
- Take measurements and view every dimension from courtside, looking at backdrop and walls.
- All walkways behind the curtains must have a specified width.
- Start taking dimensions from one end wall. This is usually the clubhouse end, but not always.
- The position of divider curtains between courts must be determined and marked on the layout.
- With cable systems, older cable must be tightened before any height measurements are taken.
- Cable height for backdrops must be measured. Cable height for divider curtains must be measured as well. Frequently, these are different because of construction details.
- All divider curtains have a natural droop that occurs between fasteners of 1"-2" as they hang. This is normal.
- All measurements of height must take into account the fasteners to be used. For example, snaps will add 1 3/4" and will affect both backdrops and divider curtains.
- All emergency exit doors must be identified and provision made to allow unfettered access to these doors.

## MEASURING FOR INDOOR PRODUCTS



Reprinted from Tennis Facilities Construction and Maintenance Manual by permission of the American Sports Builders Association. Drawings are illustrations only and we accept no responsibility for their use.