

2016

ClayTech Maintenance Manual



1.877.4.HAR-TRU



Table of Contents

Introduction	4
ClayTech Surface	5
What to Expect	6
Court Evaluation	7-8
Irrigation System	8
Final Tennis Court Preparations	9
Algae & Weed Control	9
ClayTech Maintenance	10-11
Continuing Education	12
Safe Chemical Additives	13
Indoor ClayTech Courts	14-17
ClayTech Specifications	18
Membrane Repair Guidelines	19
Line Refreshment	20-27
Playing Line dimensions	28
Tennis Court Maintenance Budget Worksheet	29
Warranty	30
Product Registration	31
Most Frequently Asked Questions	32
Support Contact	33

Introduction

Congratulations on installing your new ClayTech court. Your ClayTech system is made up of polypropylene membrane that is fully glued to an asphalt or concrete base. Court lines are embedded in the membrane by a special application using a 2-part ClayTech Line Filler specifically formulated to withstand constant wear during the heaviest of play seasons. The system is then topped with a layer of Har-Tru material and brushed in, leaving the look and feel of a true clay court.

ClayTech is very easy to maintain and easy to repair. Maintenance on Claytech is simple. A quick brushing and you are ready for play. Court lines are also very durable but in time you will need to refresh the lines by applying a thin layer of ClayTech Line Filler to worn areas. You can also refresh your court lines periodically with a good grade latex paint to brighten the lines and give your ClayTech a fresh appeal.

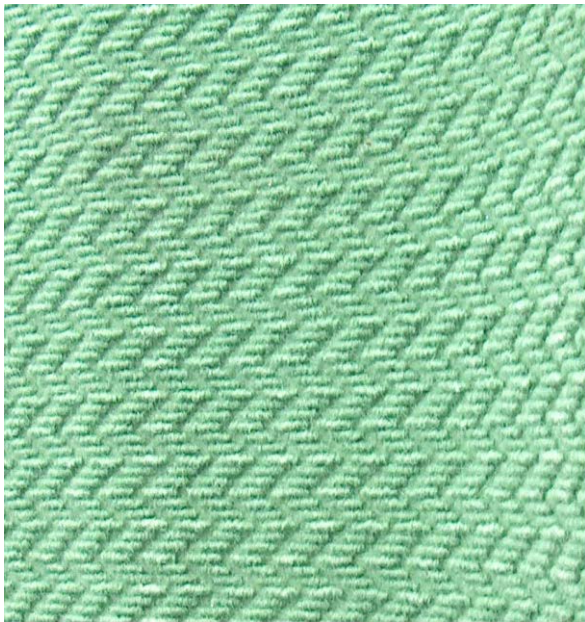
Both Har-Tru and Har-Tru Coarse Blend are made up of different particle sizes of stone which act in harmony with each other to give you the best playability. As these stone particles rub against each other, they will break down in time and you will experience more of the finer particles and less of the larger ones. The larger particles help to maintain slide on ClayTech courts. It will be necessary to replace the larger particles periodically. This is done by the addition of Har-Tru Coarse Blend. The finer particle will eventually migrate off of the court through natural migration during rain and irrigation of the courts as the courts are sloped to give you the right amount of water run off and drainage.

Please take the time to read this manual fully. It will explain everything necessary to maintain your ClayTech courts and give you the proper knowledge to prevent or troubleshoot any problems that may occur.

ClayTech Surface

ClayTech is unique in the fact that it has the look and feel of a Har-Tru clay tennis court as well as health benefits that help to eliminate overstressing the knees, back and lower extremities. Maintaining the right amount of Har-Tru Surface Material will be an important factor both in how the courts play and how the courts wear.

ClayTech is installed with Har-Tru Surface Material applied to the top of the ClayTech membrane fibers. Maintaining this amount of surface material will ensure proper wear during the lifespan of your ClayTech court. ClayTech courts experience some surface settling as the Har-Tru surface first applied will continue to fall into place within the spaces of the membrane. This will occur over the first 6-8 months as the membrane fills to capacity. Once the membrane is completely filled, you will need to add small amounts of Har-Tru Surface Material periodically to maintain and comply with the manufacturer's warranty. See Warranty Card for warranty details.



ClayTech Membrane before Har-Tru material is added.



ClayTech Surface after Har-Tru material has been added.

What To Expect

Now that your ClayTech court has been installed, some ongoing maintenance will be required. The following timelines will help to educate you on what will take place so that you can identify the issues and follow up, keeping your ClayTech courts looking and feeling great.

3 Months after installation

During the first months of ClayTech, the Har-Tru material will slowly migrate into the membrane. It may be necessary to add Har-Tru Coarse Blend periodically until migration is complete and the membrane has filled.

You may need to add Har-Tru Coarse Blend after 3 months. Remember, the amount of Har-Tru surface material is a preference and you can regulate that amount according to your desired state.

6 Months after installation

You may need to add Har-Tru Coarse Blend if surface migration is still taking place.

12 Months after installation

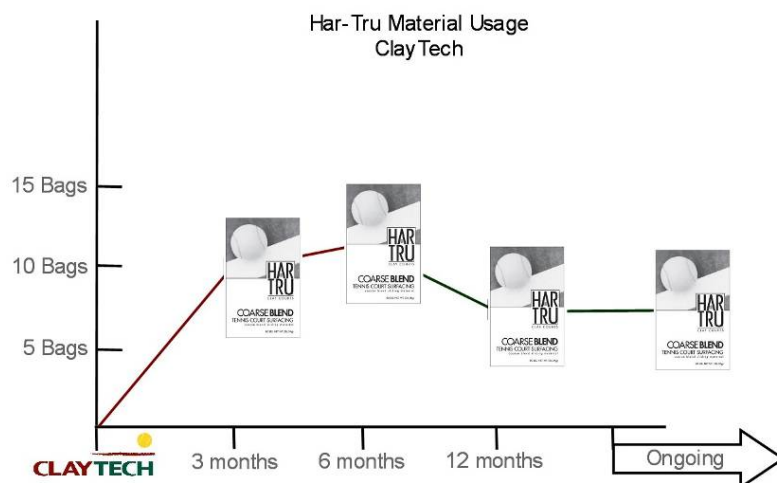
Har-Tru material addition should be minimal as the process of material migration into the membrane is fully complete. Add Har-Tru coarse blend periodically to keep your desired slide preference.

Court Lines may need to be refreshed with paint if a refreshed look is desired.

On-Going

Add Har-Tru coarse blend periodically to keep your desired slide preference.

Court Line refreshment may be needed according to wear. Applying a thin layer of ClayTech Line Filler every 3-5 years or as needed, will keep your lines looking great. It will only be necessary to apply ClayTech Line Filler to those areas in need. Refresh the entire court lines by painting them.



This chart shows approximate Har-Tru material addition amounts in respective to a timeline of 12 months. Har-Tru material will infiltrate the membrane and continue to fill voids within the membrane for approximately 6 months. Then addition amounts should drop to a consistent level.

Court Evaluation

COURT EVALUATION

Evaluate tennis court conditions in terms of preventive maintenance. Identify and correct potential problems before playing season begins. Inspect fencing, court surfacing, court amenities and court equipment as described below.

A. FENCING

1. Bottom, Intermediate and Top Rails secured at the proper height above the court surface and evenly parallel around the court.
2. Line, Corner and Terminal Posts are plumb and vertical with End Caps in place and secure.
3. Fencing Fabric evenly stretched and secured to the upright posts. Height of fence bottom approximately $\frac{3}{4}$ " above the court surface.
4. Bottom Tension Wire should be tied to fence bottom with "hog rings" spaced every 24 inches.
5. Gate Frame tension bars, Post Hinges and Latching Devices should be inspected and secured.
6. Court numbers in place.

B. COURT SURFACE

Evaluate the tennis court surface and determine if the addition of Har-Tru Coarse Blend is needed according to the amount of surface material present.

C. COURT LINES

Evaluate the tennis court lines and determine if a Line Refreshment is necessary either with a thin layer of ClayTech Line Filler application or by a coat of paint.

C. COURT AMENITIES

Inspect condition of the following amenities:

<u>Amenity</u>	<u>Condition</u>
Center Strap Anchors	
Center Straps and Hooks	
Court Numbers	
Nets	
Net Posts	
Net Post Reels	
Tennie Two-Step	
Tidi-Court	
Windscreens	
Fasteners	
Ty-Wraps	
Plastic Snaps	

D. COURT EQUIPMENT

Inspect condition of the following equipment:

<u>Equipment</u>	<u>Condition</u>
ClayTech Drag Brush	
Stainless Steel Drag Brush	
Line Scrub	
Line Sweepers	
Lute Scarifiers	
Aussie Clean Sweep	

Irrigation System

ACTIVATE IRRIGATION SYSTEM

Inspect irrigation system equipment.

<u>Equipment</u>	<u>Condition</u>
Controller	
Risers	
Sprinkler Heads	
Valves	
Valve Boxes/Lids	

Activating the irrigation system is a two step process, inspection of main feed lines and inspection of the zone valves and sprinkler heads.

1. Determine if any breaks exist in the irrigation lines leading to the tennis courts by activating the main supply line while keeping the zone control valve to the courts turned off. Ensure that the pressure booster pump is not operating during this process. If a leak does exist, the water will be forced up to the surface in a very short time and a repair can be made.
2. Test and adjust the performance of each sprinkler head. You may have to adjust the alignment of each sprinkler head from time to time to ensure proper and consistent water coverage.

Final Tennis Court Preparations

FINAL TENNIS COURT PREPARATIONS

1. Remove net post foundation hole caps or protective covers. Remove foreign debris that may have fallen down into the net post holes.
2. Re-install net posts.
3. Hang windscreens. Use ty-wraps, plastic snaps and fasteners where necessary.
4. If necessary, remove Har-Tru material from inside net center anchor.
5. Install tennis net. Attention to details such as correct lacing and the tightness of the net against the net poles makes for a clean fitting net.
6. Measure net and ensure center strap is straight and is not twisted.

Algae, Moss & Mold Control

ALGAE & MOSS CONTROL

ClayTech courts could experience some algae and Moss growth in shaded and moist areas. Agitation is the best method to prevent these growths. However, if growth is imminent, perform the following procedures.

ALGAE & MOLD

Surface agitation is the only method of preventative and removal of Algae and Mold infestation. Consistent agitation by brushing will help to prevent these growths.

ClayTech Maintenance

DAILY MAINTENANCE

The objective of this document is to define the maintenance routine in order to provide optimal playing condition. Use of ClayTech approved tools is required to maintain the manufacturer warranty.

Brushing / Grooming: The court should be brushed / groomed a minimum of once per day. Tools for grooming include the following:

- A. ClayTech Drag Brush
- B. Aussie Clean Sweep (#118)

Line sweeping: The lines should be swept a minimum of once per day with a Lee Line Master (#123) or a Deluxe Proline line sweeper (#120).

Watering:

Outdoor - The objective of watering is to keep the playing surface damp. The court should be watered on an “as needed” basis. A typical irrigation routine is to water the court at the end of the days play after the surface has been groomed or overnight with the assistance of an automatic, clock driven irrigation system. Another effective method for irrigation is to water the court for 1 to 3 minutes before each match’s play.

Indoor – During the indoor season when the courts are bubbled, the objective is to only water prior to play and as needed. Applying an overabundance of water could contribute to surface compaction as the courts do not have sun and wind to maintain the appropriate amount of moisture.

PERIODIC MAINTENANCE

Steel Bristle Drag Brush – Use the Steel Bristle Drag Brush, no more than 3 times per week during indoor play to help deter surface compaction and build-up of surface on membrane fibers. This brush is not meant to be used as a grooming tool, rather to keep the surface from creating a hard pan layer.

Light top-dressing: It may become necessary to apply a light coating of Har-Tru Coarse Blend in areas of heavy play during the playing season. The surface should be dry before application. Apply using a drop-type spreader. Apply uniformly after the surface has been brushed and groomed. Water lightly after the application has been made and the lines have been swept.

Magnesium Chloride or Calcium Chloride application: We do not recommend Magnesium Chloride or Calcium Chloride on ClayTech courts. Using this product could contribute to surface buildup on membrane fibers as well as compaction

ANNUAL MAINTENANCE

Top-dressing: The surfacing should be maintained at a 0.04” (1 mm) above the top of the membranes fibers. Apply only the amount of surfacing required to achieve the specified height above the membranes fibers. The surface should be dry before procedure begins. First scrape off any worn or “dead” granular infill. Then, after the surface has been brushed and groomed, apply new infill uniformly using a drop-type spreader. Brush and Water lightly after each application has been made and the lines have been swept.

Line Painting: Repaint lines only when necessary using approved line paint and application recommendations from Lee Tennis.

3-5 Year Reconditioning

Depending on the amount of surface contamination from nearby trees, shrubs, grasses, weeds, pollution, etc., it may become necessary to rejuvenate the ClayTech surfacing. If necessary, the procedures outlined below should be followed:

- A. Remove all granular infill from the ClayTech membrane using approved tools and procedures by Har-Tru Sports.
- B. Re-paint line tapes using approved line paint and application procedures by Har-Tru Sports.
- C. Redress the membrane using 3-4 tons of Har-Tru HydroBlend followed by a thorough brushing and watering.
- D. Let the surface dry, brush smooth and apply Har-Tru Coarse Blend as needed followed by thorough brushing and watering.

WINTERIZING THE IRRIGATION SYSTEM

1. Turn off main water supply.
2. Ensure manual valves at base of sprinkler heads are open.
3. With an air compressor, blow out the irrigation lines by activating each zone separately for approximately 5 minutes, do not exceed 60 psi. Open each zone valve box cover and inspect valves for any needed repairs while the system is being blown out.
4. Repeat step 3 until all water has been blown through the system.
5. Remove any debris from inside the valve boxes.
6. Replace valve box lids.
7. Note any repairs or improvements needed for the system before the next season

Continuing Education

CONTINUING EDUCATION

Several educational aids are available for staff training; the General Maintenance Outline for Har-Tru Tennis Courts, the Maintenance Video, the maintenance DVD and other resources. Visit our web-site at www.hartru.com for additional information. These products are ideal for keeping your staff informed, on a regular basis about the most efficient methods of Har-Tru tennis court maintenance.

Safe Chemical Additives

Magnesium Chloride

We do not recommend using Magnesium Chloride or Calcium Chloride on ClayTech courts. Doing so may promote surface compaction as the courts do not experience weather related moisture which helps to reduce build-up of these products.

Indoor Courts

Indoor Environment

ClayTech indoors is a great way to experience tennis year round. Installing ClayTech in a closed building will provide a year round playing season. When installing a ClayTech indoors, there are important factors to consider. Having the proper combination of heat, ventilation and air flow will make for a successful environment. ClayTech is a semi-Clay Court that will need moisture periodically, just as Har-Tru courts need water. This moisture indoors will need to be controlled and regulated through environment control.

How is this done? The use of heat, airflow and ventilation will play a big part in the building's environment. Having the appropriate HVAC system and ventilation, is essential to maintain the correct environment necessary for ClayTech courts. There is a balance of temperatures, airflow and humidity levels that if not correct can cause mold and mildew.

An HVAC system along with an appropriate ventilation system will need to be designed and installed by professionals.

The following are terms and descriptions that will help in communication and understanding when making environment design decisions for ClayTech indoors.

Ventilating

Ventilating is the process of "changing" or replacing air in any space to control temperature or remove moisture, odors, smoke, heat, dust and airborne bacteria. Ventilation includes both the exchange of air to the outside as well as circulation of air within the building. It is one of the most important factors for maintaining acceptable indoor air quality in buildings. Methods for ventilating a building may be divided into mechanical/forced and natural types. Ventilation is used to remove unpleasant smells and excessive moisture, introduce outside air, and to keep interior building air circulating, to prevent stagnation of the interior air.

Mechanical or forced ventilation

"Mechanical" or "forced" ventilation is used to control indoor air quality. Excess humidity, odors, and contaminants can often be controlled via dilution or replacement with outside air. However, in humid climates much energy is required to remove excess moisture from ventilation air.

Indoor Court Maintenance

ClayTech Maintenance for indoor courts is similar to outdoor court maintenance, except for the periodic use of the Stainless Steel Drag Brush. We recommend to use the Stainless Steel Drag Brush no more than 3 times a week to prevent surface compaction or build-up on membrane fibers which could create a hardpan layer. Use the Claytech brush for all daily grooming. Please follow the ClayTech Maintenance guide found in this manual for Daily, Periodic and Annual maintenance.

The amount of water necessary on your indoor Claytech will vary with the indoor environment. Heat and airflow may determine how much water will be needed daily. Regulating the water use and moisture levels in the building will help to keep mold and mildew at bay along with the proper HVAC system and ventilation.

ClayTech Specifications

Membrane	Needle punched sports surface in 100% structured homogenous polypropylene fiber, topped with granular aggregate infill
Infill	Har-Tru HydroBlend and Har-Tru Coarse Blend
Outdoor Adhesive	Isotec Isobond DM01178 polyurethane adhesive
Use	Indoor and outdoor tennis and bocce courts
Color	American Red or Har-Tru Green
Thickness	0.34" +/- 10% (8.5 mm)
Roll Dimensions	6'-8" (2.08 m) wide by 60'-4" (18.3 m) long
Line Medium	ClayTech Line Filler and ClayTech Line Paint
ITF Classification	Category 1 (slow), Type B
Warranty	2 year (see warranty statement for details)

Membrane Repair Guide

The following steps should be used if excessive wear or surface coarse layer movement creates the need to replace a section of the ClayTech membrane.

- Step 1: Vacuum out the granular infill from the area to be patched and mark the area.
- Step 2: Overlay that area with a new piece of ClayTech membrane. Be sure to align the pattern of the new membrane so it properly matches with the existing court's membrane.
- Step 3: Double cut through both the replacement and existing membranes. Keep your knife blade at a 90° angle to the surface.
- Step 4: Pull/scrape up and discard existing area of membrane to be replaced. If adhesive is still attached to the surface course layer below, scrape excess off with a putty knife or hand scraper. If the adhesive can not be removed by scraping, use MEK or Xylene solvent to clean the asphalt or concrete of the excess adhesive. Then wait until solvent has evaporated completely. Be careful to not apply solvent directly to ClayTech membrane.
- Step 5: Apply a fine layer of new Isotech Isobond DM01178 adhesive to the newly cleaned asphalt or concrete surface course layer. Be careful not to get adhesive on the top of the ClayTech membrane.
- Step 6: Roll membrane with a 100 to 200 lb hand roller. Multiple rolling's may be necessary as the adhesive expands during its curing time.
- Step 7: Re-apply any court lines needing to be replaced using Claytech Line Filler.
- Step 8: Work in new Har-Tru HydroBlend infill and Har-Tru Coarse Blend as needed to replicate the surface consistency of the surrounding playing areas.
- Step 9: Brush court in order to blend the Har-Tru materials.
- Step 10: Allow 24 hours before play resumes.

Membrane Repair products can be supplied through you Har-Tru dealer.

Line Refreshment

ClayTech Court Lines are applied to the ClayTech membrane using a 2-part ClayTech Line Filler specifically formulated to withstand constant wear during the heaviest of play seasons. Court Lines should be refreshed using a re-application of ClayTech Line Filler every 3-5 years or as needed. This application would be a thin layer and only applied to those areas in need. If color refreshment is necessary, apply a coat of high quality acrylic paint periodically.

It is important to follow the application directions when applying Clay Tech Line Filler.

When do I need to refresh?

The existing court lines have a life expectancy of approximately 3-5 years. Of course the life span of the court lines will be determined by how much wear and tear that the courts get throughout the playing season. You may want to refresh the court lines periodically. There are 2 ways to refresh your existing court lines on a ClayTech Tennis Court.

- Refresh by Painting
- Refresh by applying a light coat of Line Filler

Refresh by Painting

Examine your ClayTech court lines. You may want to refresh your courts annually to give the optimum aesthetics possible by applying a coat of a high quality acrylic paint. This will give the court lines a new fresh look and will fill in minor cracks and crevices. Use this method when you want to refresh the color.

Refresh by Applying Line Filler

Examine your ClayTech court lines. You may want to refresh your courts periodically with ClayTech Line Filler to fill in court lines that are experiencing excessive wear. This can happen when courts are extremely busy during the playing season. You will notice areas of the court lines that are cracked, worn, and with inconsistent edges. Use this method when you want to fill in worn and cracked lines.



Line Refreshment Kits

Refreshment List of Products for Painting

✓	Line Paint 100% acrylic
✓	2" Masking Tape high adhesive
✓	2-1/2" – 3" Paint roller
✓	Paint tray
✓	Mixing Paddle

Refreshment List of Products for Applying Line Filler

Included in kit	Description
✓	ClayTech Line Filler
✓	ClayTech Line Filler Hardener (4 oz. per gallon)
✓	2" Masking Tape high adhesive
✓	2-1/2" Trowel or Putty knife
✓	Mixing Paddle 3/4"
✓	Containers (to separate Line Filler into 3 equal parts)

Always store adhesives, line fillers and line paint out of the sun and heat while on the jobsite. Make sure that these products are stored in a climate controlled environment when not on the jobsite. Temperatures should range between 65 degrees to 85 degrees. Never allow these products to freeze.



Take safety precautions with all flammable products such as Line Fillers and Paint.

Line Refreshment Tool List

This list of tools should be on the jobsite prior to the start of refreshing the lines. This list consists of tools needed for ClayTech refreshment either for Paint or Liner Filler processes.

Qty	Tools	Description
1	Broom or Vacuum Cleaner	This will be used to remove or sweep the Har-Tru surface away from the line areas.
1	Drill (Battery operated if no outlet available)	This will be used to mix the Paint or Line Filler thoroughly.
1 pkg	Gloves	Gloves should be used when working with Line filler.
1	Safety Glasses w/ side shields	Use safety glasses when mixing or applying Line Filler or paints.
1	2" Paint Roller w/extension pole	Paint Roller included in kits, extension pole is not included in kits.
2	Paint Trays	Included in kits.
1	30" Lutes	Used to spread and work Har-Tru back into the membrane.
1	ClayTech Brush	This will be used to brush the entire courts after lines have been refreshed.

Line Refreshment Safety

Please use caution when working with Flammable liquids and chemicals

The following are safety signs and warnings that you will see throughout this manual. Please take the time to review these signs and warnings and make sure you have the appropriate personal protective equipment available.



This sign cautions you to be aware that there is potential danger.



This sign cautions you to be aware of the dangers of flammable products. Use precaution when handling these products.



This sign cautions you to wear safety glasses when performing the task or in an area necessary to wear safety glasses.



This sign cautions you to wear gloves while handling some products during this installation.



This sign cautions you to be aware of the dangers of smoking while in the installation area.



This sign cautions you to be aware of the dangers of chemicals that could potentially get into eyes or on to skin.



This is the Material Safety Data Sheet sign which will indicate a need for you to review these sheets on the jobsite. Always have the MSDS sheets available on the jobsite in case of an emergency.

PPE

Personal Protective Equipment

Wearing the appropriate Personal Protective Equipment during the installation process is essential for proper safety. Please follow all safety recommendations throughout this document and refer to the MSDS sheets for more detailed information which recommends the appropriate PPE.



Always wear safety glasses with side shields when working with; adhesives, Line Fillers, Xylene and Mineral Spirits or any other chemicals or liquids, to prevent these products from getting into eyes. If any of these products do get into eyes, flush eyes with water. Please read the MSDS sheets for Hazard Identification.

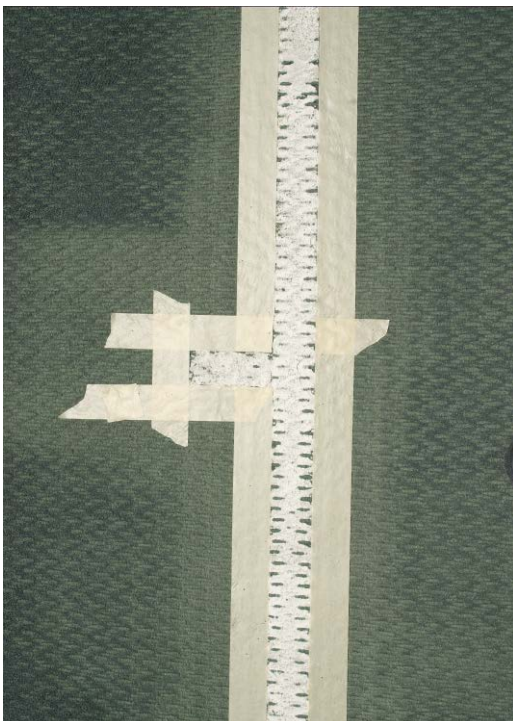
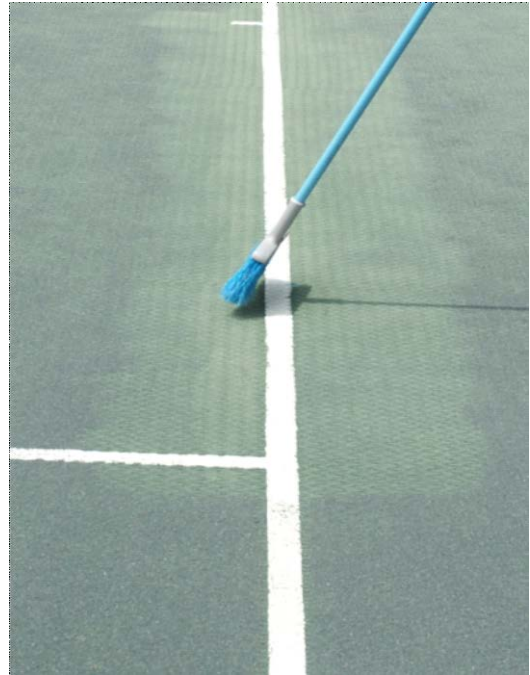


Always wear Gloves when working with; adhesives, Line Filler, Xylene and Mineral Spirits or any other chemical or liquids to prevent any of these products from getting onto skin. Wash off immediately if this occurs. Please read the MSDS sheets for Hazard Identification.

Line Refreshment Site Preparation

Remove court material from line Area

Prepare your ClayTech courts by sweeping the the Har-Tru material away from the court lines at least 6" away from each side of the existing court lines. Try to contain the Har-Tru within the area as you will need to pull the surface material back into place once the Court Line Refreshment process is complete.



Tape off existing court lines

Use the masking tape included in your Refreshment kit to tape off the court lines. Make sure to apply the masking tape along the edges of the existing court lines in a straight and consistent manner. This step will be important because you will want the court lines to remain straight and consistent.

Line Refreshment Mixing & Applying

Once the court lines are taped off, prepare the Paint or Line Filler, whichever product you are using.

Paint Refreshment

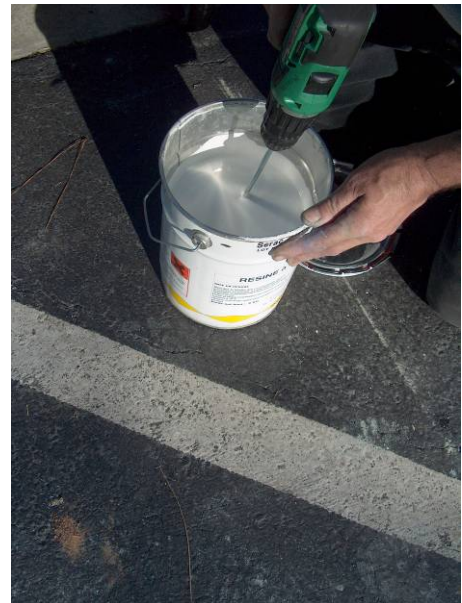
When mixing paint, use the mixing paddle included in your refreshment kit to thoroughly mix the paint.

Line Filler Refreshment

ClayTech Line Filler is a 2-part mixture that includes the ClayTech Line Filler (Part A) and the catalyst or hardener (Part B). The container of catalyst (Part B) is pre-measured for the 1-gallon container of Line Filler (Part A).

When mixing the Line Filler, use the mixing paddle included in your refreshment kit to thoroughly mix the Line Filler before adding the catalyst. Use the mixing paddle to mix the catalyst in the line Filler thoroughly, approximately 2-3 minutes.

Note: We recommend to mix half of the 1-gallon container at a time using a separate container. If you do, simply measure half of both the 1-gallon container of Line filler (Part A) and half of the container of Catalyst (Part B).



Note:

You will have approximately 15 minutes to work with the Line Filler after the catalyst has been added. Mix only one of the containers of ClayTech line Filler at a time. This will help to prevent waste.



Wear safety gloves and safety glasses during the gluing process. This area should be a no smoking area while applying adhesives.

Apply ClayTech Line Filler

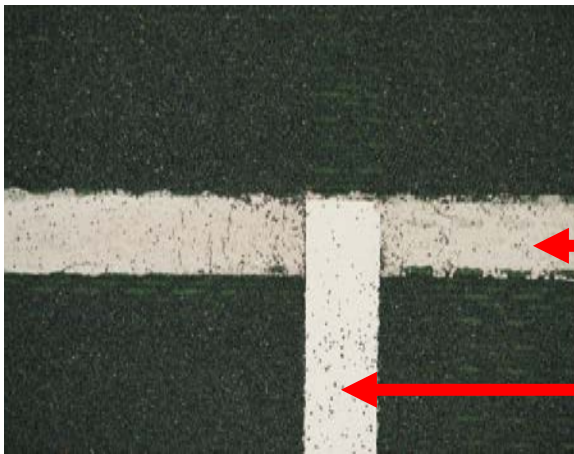
Apply a thin, consistent layer of Line Filler to the taped off court lines using the putty knife. Make sure to apply the Line Filler smoothly along the entire width of the taped off court lines. Continue to apply the Line Filler along the entire length of the court line that is being refreshed. Stop only at the ends of each court line you are refreshing.

Note: Do not leave any bumps or raised areas in the line areas as this will cause sliding problems.

Remove the Masking Tape

Once the ClayTech Line Filler or Paint has been applied, pull the tape away from the court lines before they have been allowed to dry.

Note: Allowing the ClayTech Line Filler to dry may make it difficult to remove the tape from the court lines.



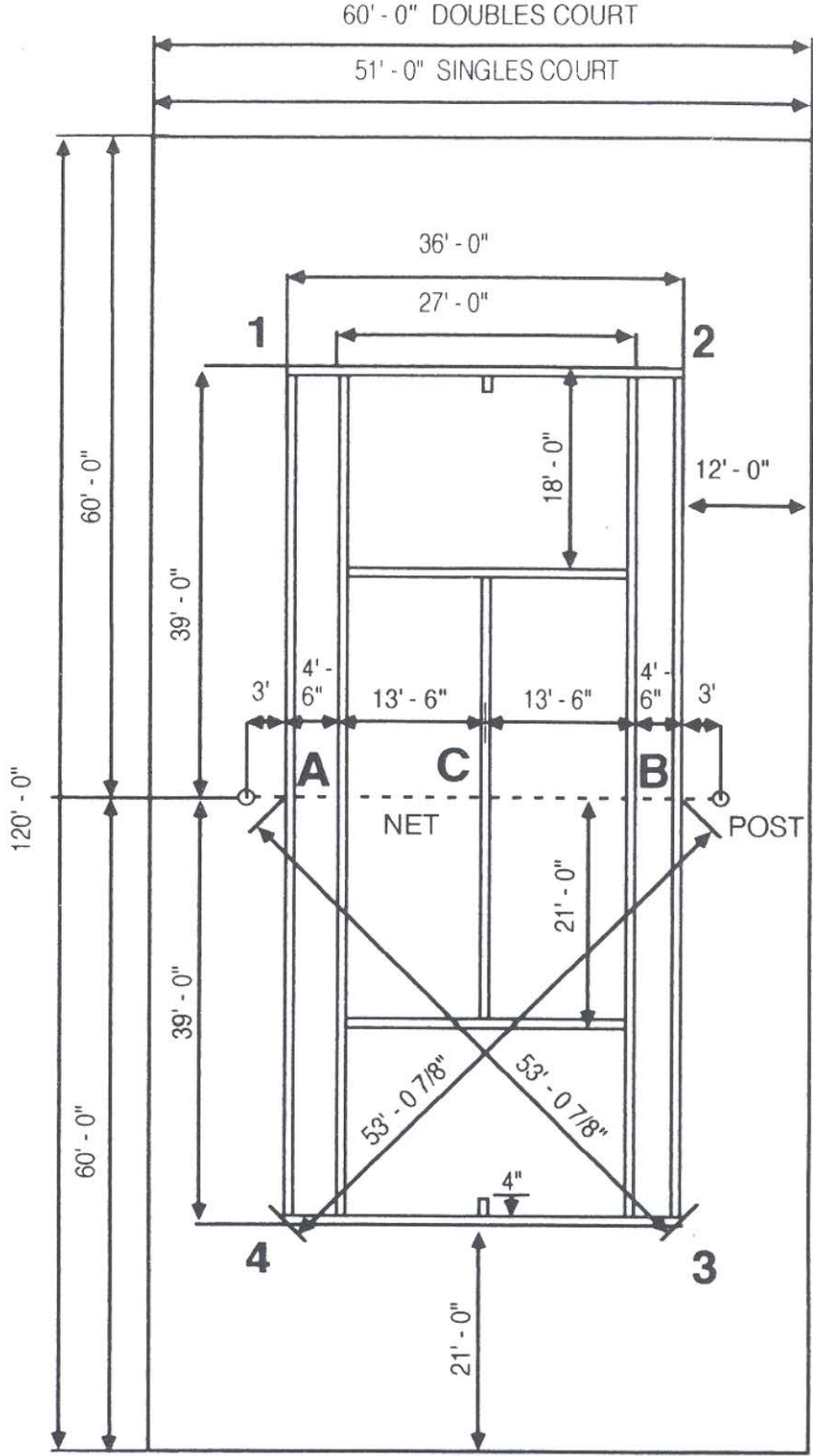
Court Line needing to be refreshed with ClayTech Line Filler. Notice the worn edges.

Court Line that has been refreshed with ClayTech Line Filler. Edges are crisp and consistent.

Allow 24 hours for the painted lines or newly refreshed ClayTech Line Filler to harden and cure before adding Har-Tru material back onto the courts.

Line Refreshment Kits can be ordered through your Har-Tru dealer.

Playing Line Dimensions



TENNIS COURT DIMENSIONS

TENNIS COURT MAINTENANCE
BUDGET WORKSHEET

<u>Inventory</u>	<u>Condition</u>	<u>Needed</u>	<u>Budget</u>
Aussie Clean Sweep			
Benches			
Center Strap Anchor			
Center Strap/Hook			
Coolers & Stands			
Court Numbers			
ClayTech Drag Brush			
Line Sweepers			
Lute Scarifier			
Nets			
Net Posts & Reels			
Sprinkler Heads			
Tennie Two-Step			
Tidi-Court			
Tru-Flow Spreader			
Windscreens			
Fasteners			
Ty-Wraps			
Plastic Snaps			
Har-Tru Material			
Line Refreshment			
Magnesium Chloride			
Other			

Manufacturer's Limited Warranty

Har-Tru, LLC warrants that if the ClayTech membrane proves to be defective in material resulting in premature wear, during normal and ordinary use of the product for the express purpose of playing tennis within 2 years from the date of completion of installation, Har-Tru, LLC will, at Har-Tru, LLC option, either repair or replace the affected area without charge, to the extent required to meet the warranty period (but no cash refunds will be made). This warranty does not come into effect unless the Certificate of Completion is sent for validation to the head office of Har-Tru, LLC indicated below within 30 days of installation. This warranty is limited to the remedies of repair or replacement, which shall constitute the exclusive remedies available under this warranty, and all other remedies or recourses which might otherwise be available are hereby waived by the Buyer. Har-Tru, LLC will have no other obligations or liability for damages arising out of or in connection with the use or performance of the product including but without limitation, damages for personal injury or economic losses.

This limited warranty does not cover:

1. Damage resulting from accident, force majeure, misuse, abuse, and neglect or from other than normal and ordinary use of the product.
2. Damage resulting from failure to maintain an amount of Har-Tru Surface Material above the ClayTech membrane fibers.
3. Damage resulting from failure to maintain the court in accordance with the maintenance and use instructions provided to the buyer.
4. Damage resulting from repair or attempted repair or maintenance by anyone other than Har-Tru, LLC or an authorized distributor or authorized third party serviceman.
5. Damage due to external causes which include but are not limited to the application or chemicals or cleaning agents, adhesive backing, dirt, traffic, normal matting, abuse, misuse, negligence, vandalism, fire, flood, windstorm, acts of God, and improper care.
6. Failure of improper design or repair of base.
7. Use of improper footwear, to include any type of other than normal rounded edged clay type tennis shoes.
8. Use of improper maintenance tools not recommended and approved by Har-Tru, LLC.

We disclaim liability for incidental and consequential damages for breach of any express or implied warranty, including any implied warranty of merchantability, with respect to the product. In the event that the product is used for purposes other than normal tennis play, it being understood that the product has only been tested for this activity and not other uses, Har-Tru, LLC shall not be responsible for any and all damages incurred and this limited warranty as well as all legal warranties shall become null and void. Any product repairs or replacements performed under the terms of this guarantee shall not lead to any extension whatsoever of the guarantee.

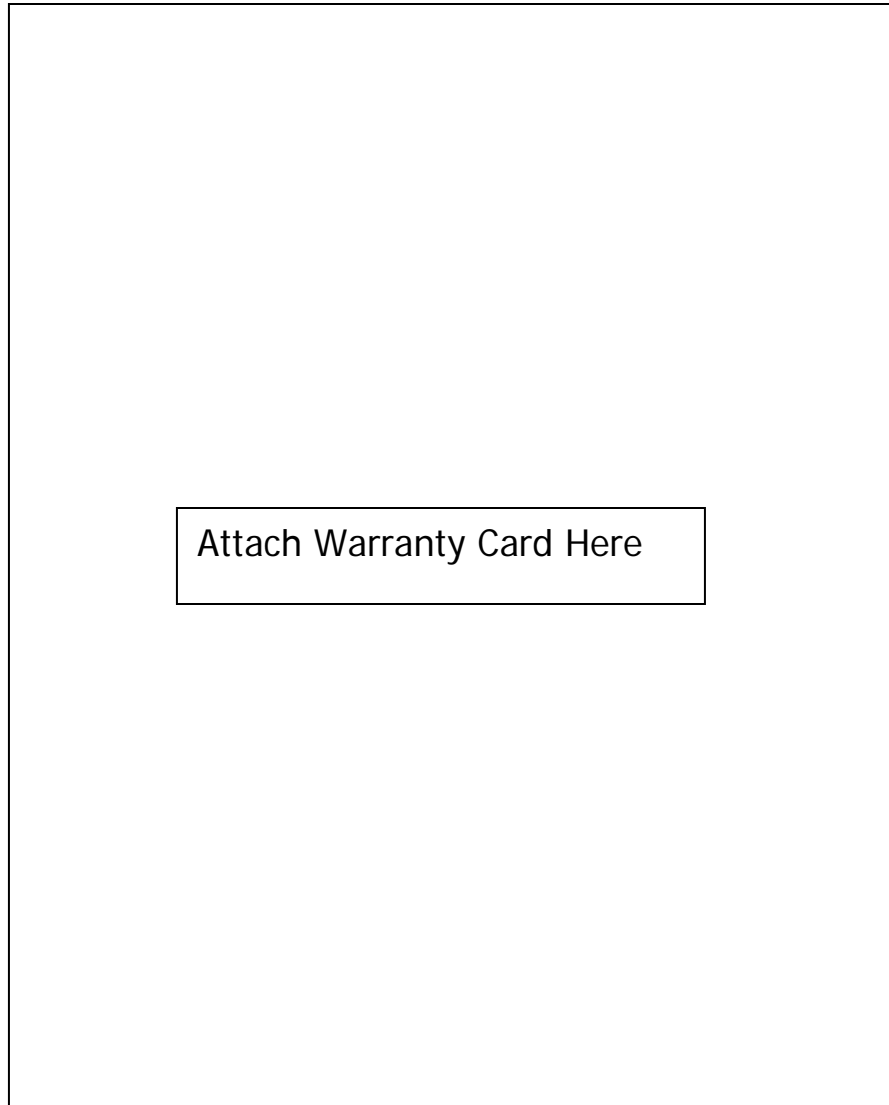
THE ABOVE EXPRESS WARRANTIES ARE IN LIEU OF ANY OTHER WARRANTIES, EXPRESS OR IMPLIED, INCLUDING, WITHOUT LIMITATION, ANY WARRANTIES OF MERCHANTABILITY OR FITNESS FOR A PARTICULAR PURPOSE. THERE ARE NO WARRANTIES BEYOND THOSE EXPRESSLY SET FORTH ABOVE.

BUYER'S REMEDIES ARE LIMITED TO REPLACEMENT OR REPAIR OF THE DEFECTIVE PRODUCT, IN HAR-TRU'S SOLE DISCRETION. NEITHER HAR-TRU NOR ANY PARENT OR AFFILIATE OF HAR-TRU IS LIABLE FOR INDIRECT, SPECIAL, INCIDENTAL OR CONSEQUENTIAL DAMAGES IN CONNECTION WITH THE PRODUCTS COVERED BY THIS WARRANTY.

SOME STATES DO NOT ALLOW LIMITATION OF WARRANTIES OR EXCLUSIONS OF INCIDENTAL OR CONSEQUENTIAL DAMAGES, SO THE ABOVE LIMITATIONS AND EXCLUSIONS MAY NOT APPLY TO YOU. THIS WARRANTY GIVES YOU SPECIFIC LEGAL RIGHTS, AND YOU MAY ALSO HAVE OTHER RIGHTS WHICH VARY FROM STATE TO STATE.

Product Registration

Register your ClayTech court today by detaching the Registration Card and sending it to the manufacturer for Product Support and Warranty.



Most Frequently Asked Questions

Can Magnesium Chloride be used on ClayTech?

Magnesium Chloride or Calcium Chloride application: Har-Tru, LLC does not recommend the use of Magnesium Chloride or Calcium Chloride on ClayTech courts. Using this product could contribute to surface buildup on membrane fibers as well as compaction.

Can localized areas on a ClayTech court be repaired or replaced?

Yes, if you have an area where the membrane has worn excessively, patch the membrane by cutting the worn area and replacing with new membrane. Follow ClayTech Membrane Repair Guide in this manual.

Support Contact

If you need assistance with this product, contact Har-Tru, LLC at 877-4-HAR-TRU or go online to www.hartru.com or contact your local distributor.



Har-Tru, LLC
2200 Old Ivy Road
Suite 100
Charlottesville, VA 22903
877-4-HAR-TRU • fax 434-971-6995
www.hartru.com

Roy Hey 8/2016