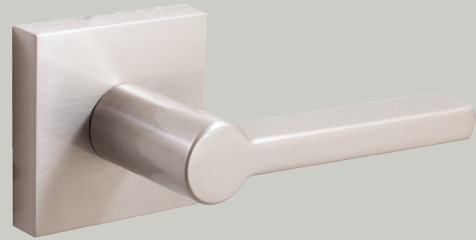




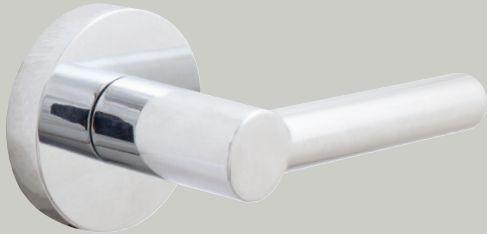
Munich

This bold, contemporary design is perfect for modern homes.



Vienna

With its linear design, the Vienna lever brings a sophisticated and welcoming feel to any home.



Zurich

Old-world sophistication meets contemporary styling in the Zurich levers.



Cedar Brook

Elegant arches are a perfect fit for transitional styles.



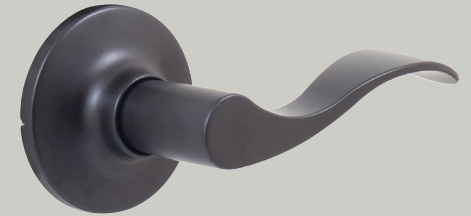
Mill Creek

Graceful lines and classic styling come together in this handle set.



Willow Park

Its crisp, clean appearance suits all styles.



Beaverton

Smooth, gentle curves fit beautifully in your hand and add a subtle elegance to any room.



Chatham

Delicate curves are perfect for a home with classic styling.



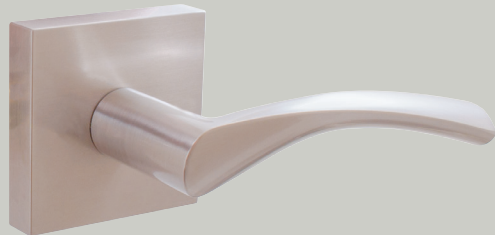
Memphis

Fine details make a bold statement in any room.



Contemporary Round Deadbolt

Keep your home secure without sacrificing style. The low profile of this deadbolt complements both contemporary and mid-century tastes.



Turin

The Turin lever features a sleek, elegant design that fits beautifully in your hand and your home.



Highland

With its refined silhouette, the Highland is an instant classic.



Springhill

This smooth, oval knob brings a luxurious air to any decor.



Tucson

Sleek, fast lines create a crisp, modern feel.



Contemporary Square Deadbolt

Dress up your front door with the square contemporary deadbolt. Its low profile is ideal for contemporary and mid-century homes.



Bonn

With its sleek, cylindrical design, the Bonn knob is a perfect fit for the modern home. Choose from square or round rosettes to create your ideal look.



Ball

Retro, modern, or traditional, this knob suits any style.



Tulip

With a classic style, this knob coordinates with traditional and modern decor.



Single & Double Cylinder Deadbolts

Security meets style. These deadbolts are a perfect match in any home.



DOOR LOCKS



FINISH CHART

Polished Brass (03)	Antique Brass (05)	Vintage Bronze (11P)	Satin Nickel (15)	Polished Chrome (26)	Satin Chrome (26D)	
Matte Black (19)						
			Polished Brass	Antique Brass	Vintage Bronze	Satin Nickel
			Matte Black	Polished Chrome	Satin Chrome	

Ball			X	X	
Beaverton	X		X	X	X
Bonn				X	X
Cedar Brook			X	X	
Chatham			X		
Highland			X	X	X
Memphis			X	X	
Mill Creek			X	X	X
Munich			X	X	X
Springhill			X	X	
Tucson			X	X	X
Tulip		X			
Turin				X	X
Vienna			X	X	X
Willow Park			X	X	X
Zurich			X	X	X
Deadbolt, Single Cylinder	X		X	X	X
Deadbolt, Double Cylinder	X		X	X	
Deadbolt, Contemporary Square			X	X	X
Deadbolt, Contemporary Round			X	X	X
Deadbolt, Single-Sided			X	X	X
Round Pocket Door Lock	X	X	X	X	X
Contemporary Square Pocket Door Lock			X	X	X
Square Pocket Door Lock	X	X	X	X	X
Tall Pocket Door Lock			X	X	

Whether you want the warm, classic look of polished brass or the sleek, modern feel of polished chrome, you're sure to find your perfect match with Stone Harbor locks.

© Stone Harbor Hardware LLC
Rev. April 2022
877-556-8483
www.stoneharborhardware.com

SH-0002



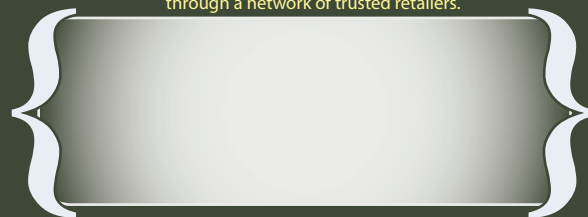
The best of both worlds. We created a solid lock for an amazing value, giving you security that's as stylish as it is practical.

It's what's on the inside that counts. With an improved latchbolt and sturdy, double-spring construction, our locks are designed for durability.

Smart and stylish. Stone Harbor locks feature a smooth, contoured design that helps bring a room together. With popular styles and finishes that coordinate with the rest of the Stone Harbor line, you're sure to find the perfect look – and the perfect lock – for your home.

Worry-free from start to finish. With easy-to-install, reversible levers and adjustable latches, Stone Harbor locks are a dream come true. Add in our lifetime mechanical warranty, and you have an unbeatable value.

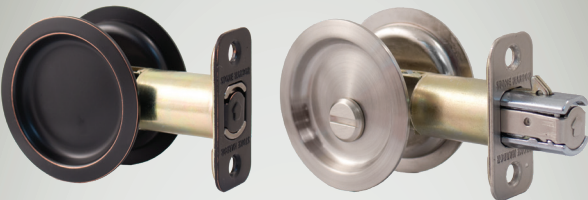
Stone Harbor Hardware is available through a network of trusted retailers.



We stand behind our locks.

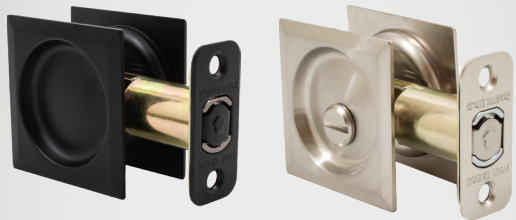


Stone Harbor locks come with a lifetime mechanical warranty and a five-year finish warranty. It's our way of promising that you'll love these locks just as much as we do.



Round Pocket Door Locks

Our best-selling pocket door lock is perfect for those small spaces. They are available with either a 2-3/8" or a 2-3/4" backset and fit a standard 2-1/8" crossbore.



Contemporary Square Pocket Door Locks

A modern option for small spaces, our contemporary square pocket door locks fit a standard 2-1/8" crossbore. They are available with either a 2-3/8" or a 2-3/4" backset.



Square Pocket Door Locks

Make all your doors match with our coordinating passage and privacy pocket door locks. They measure 2-3/4" tall by 2-1/2" wide and fit a 2-1/4" x 1-3/4" cutout.



Tall Pocket Door Locks

Perfect for those spaces that need a little something more. Our tall pocket door locks measure 3-1/4" tall by 2-1/4" wide and fit a 2-3/4" x 1-3/4" cutout.