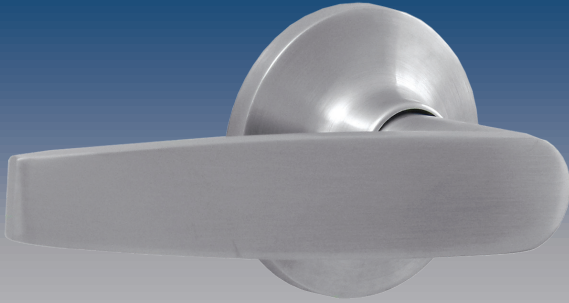


Tucson Lever



Functions:

Passage/Hall/Closet

Both levers are always free.

Privacy/Bed/Bath

Both levers are locked and unlocked by a turn button on the inside lever. The exterior lever can be unlocked with an emergency key.

Keyed Entry

Both levers are locked and unlocked by a turn button on the interior side or a key on the exterior side.

Surface-Mounted Dummy

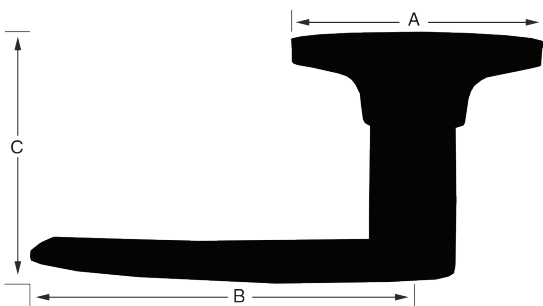
For use as a pull or a decorative knob. No operation.

Tucson Lever Dimensions:

A: 2 5/8"

B: 4 1/8"

C: 2 1/2"



Available Finishes:

- Bright Brass (3)
- Vintage Bronze (11P)
- Satin Chrome (26D)

Specifications:

Door Prep

2 1/8" cross bore

1" edge bore

1" x 2 1/4" latch face

Backset

Easily adjustable latch from 2 3/8" to 2 3/4."

Door Thickness

Fits 1 3/8" to 1 3/4" standard doors.

Cylinder

KW1 or SC1 keyways are available.

Latch Faceplates

Tucson levers come standard with round corner faceplates.

Strikes

Includes a 2 1/4" tall, full lip 1/4" round corner strike.

Bolt

1/2" throw

Door Handing

Fits both left and right-hand doors.

ANSI/BHMA

Meets A156.2 Grade 3 requirements.

Stone Harbor Locks

P.O. Box 1961 • Appleton, WI 54912-1961
www.stoneharborlocks.com • 877-556-8483

© 2010 Stone Harbor Lock Company