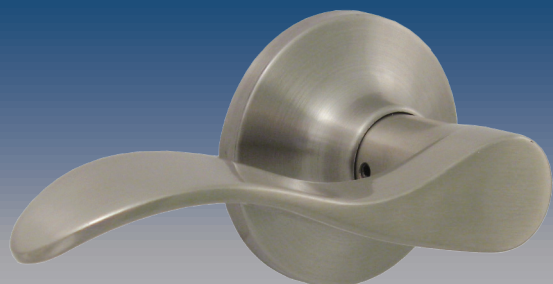


Beaverton Lever



Functions:

Passage/Hall/Closet

Both levers are always free.

Privacy/Bed/Bath

Both levers are locked and unlocked by a turn button on the inside lever. The exterior lever can be unlocked with an emergency key.

Keyed Entry

Both levers are locked and unlocked by a turn button on the interior side or a key on the exterior side.

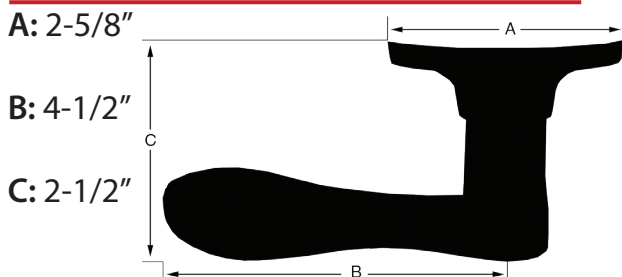
Surface-Mounted Dummy

For use as a pull or a decorative lever. No operation.

Handleset Trim

For use on the inside of an exterior handleset. Includes a lever and deadbolt thumb turn.

Beaverton Lever Dimensions:



Available Finishes:

Polished Brass (3) Matte Black (19)
Antique Brass (5)
Vintage Bronze (11P)
Satin Nickel (15)

Specifications:

Door Prep

2-1/8" cross bore

1" edge bore

1" x 2-1/4" latch face

Backset

Easily adjustable latch from 2-3/8" to 2-3/4."

Door Thickness

Fits 1-3/8" to 1-3/4" standard doors.

Cylinder

KW1 and SC1 keyways are available.

Latch Faceplates

Beaverton levers come standard with round corner, square corner and drive-in faceplates.

Strikes

Includes a 2-1/4" tall, full lip 1/4" round corner strike.

Bolt

1/2" throw

Door Handing

Passage, privacy and entry levers fit both left and right-hand doors. Dummy pulls and handleset trims are handed.

ANSI/BHMA

Meets A156.2 Grade 3 requirements.

Handleset Trims

15 Series trims fit 10 Series handlesets (Willow Park, Mill Creek, and Cedar Brook).

Stone Harbor Hardware

P.O. Box 1961 • Appleton, WI 54912

www.stoneharborhardware.com • 877-556-8483

© 2011 Stone Harbor Hardware LLC