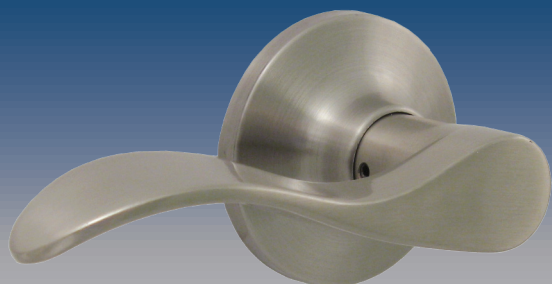


# Beaverton Lever



## Functions:

### Passage/Hall/Closet

*Both levers are always free.*

### Privacy/Bed/Bath

*Both levers are locked and unlocked by a turn button on the inside lever. The exterior lever can be unlocked with an emergency key.*

### Keyed Entry

*Both levers are locked and unlocked by a turn button on the interior side or a key on the exterior side.*

### Surface-Mounted Dummy

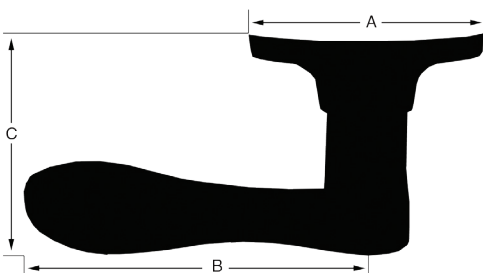
*For use as a pull or a decorative knob. No operation.*

## Beaverton Lever Dimensions:

A: 2 5/8"

B: 4 1/2"

C: 2 1/2"



## Available Finishes:

- Bright Brass (3)
- Antique Brass (5)
- Vintage Bronze (11P)
- Satin Nickel (15)

## Specifications:

### Door Prep

*2 1/8" cross bore*

*1" edge bore*

*1" x 2 1/4" latch face*

### Backset

*Easily adjustable latch from 2 3/8" to 2 3/4."*

### Door Thickness

*Fits 1 3/8" to 1 3/4" standard doors.*

### Cylinder

*KW1, SC1 and WR5 keyways are available.*

### Latch Faceplates

*Beaverton levers come standard with round corner, square corner and drive-in faceplates.*

### Strikes

*Includes a 2 1/4" tall, full lip 1/4" round corner strike.*

### Bolt

*1/2" throw*

### Door Handing

*Passage, privacy and entry levers fit both left and right-hand doors. Dummy pulls and handleset trims are handed.*

### ANSI/BHMA

*Meets A156.2 Grade 3 requirements.*

## Stone Harbor Locks

P.O. Box 1961 • Appleton, WI 54912-1961  
www.stoneharborlocks.com • 877-556-8483

© 2010 Stone Harbor Lock Company