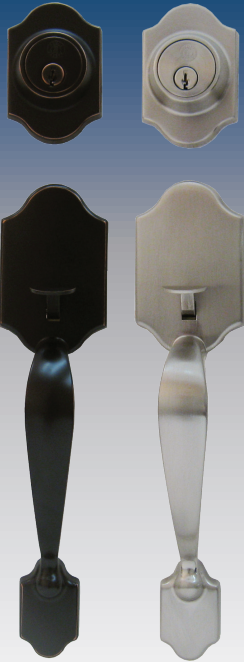


Cedar Brook



Functions:

Handleset with Single Cylinder Deadbolt

The deadbolt is operated by a key outside and a turn button inside. The handle latch is operated by a thumb piece outside and passage knob or lever on the inside.

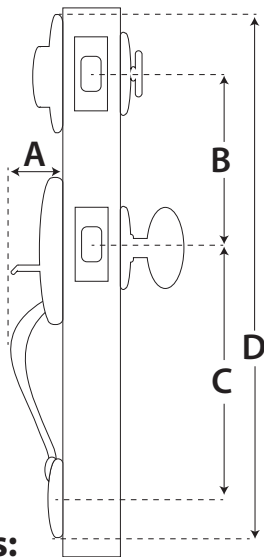
Cedar Brook Handleset Dimensions:

A: 2 1/2"

B: 5 1/2"

C: 8 1/2"

D: 17"



Available Finishes:

Vintage Bronze (11P)

Satin Nickel (15)

Specifications:

Door Prep

2 1/8" cross bore

1" edge bore

1" x 2 1/4" latch face

Backset

Easily adjustable latch from 2 3/8" to 2 3/4."

Door Thickness

Fits 1 3/8" to 1 3/4" standard doors.

Cylinder

KW1 and SC1 keyways are available.

Latch Faceplates

Trim packs for Cedar Brook handlesets come standard with round corner and square corner faceplates.

Strikes

Trim packs for Cedar Brook handlesets include a 2 1/4" tall, full lip 1/4" round corner strike for the handle latch and a 1" x 2 1/4" round corner strike for the deadbolt.

Bolt

1/2" handle throw

1" deadbolt throw

Door Handing

Fits both left and right-hand doors.

ANSI/BHMA

Meets A156.2 Grade 3 requirements.

Stone Harbor Hardware

P.O. Box 1961 • Appleton, WI 54912

www.stoneharborhardware.com

© 2011 Stone Harbor Hardware LLC