

Art Template for Clear R6 Vissually Stunning Plastic cup.

Live Area: ALL critical text or images must be within the green outline. 8.72x3.1

- If there is a lid on the cup;

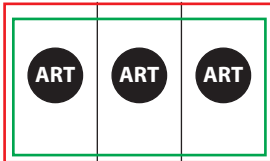
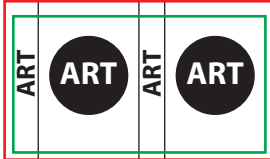
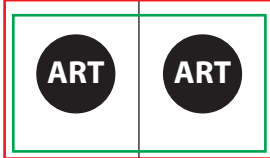
P2 Lid: Keep critical text or images below the cyan line.

All Other Lids: Keep critical text or images below the magenta line.

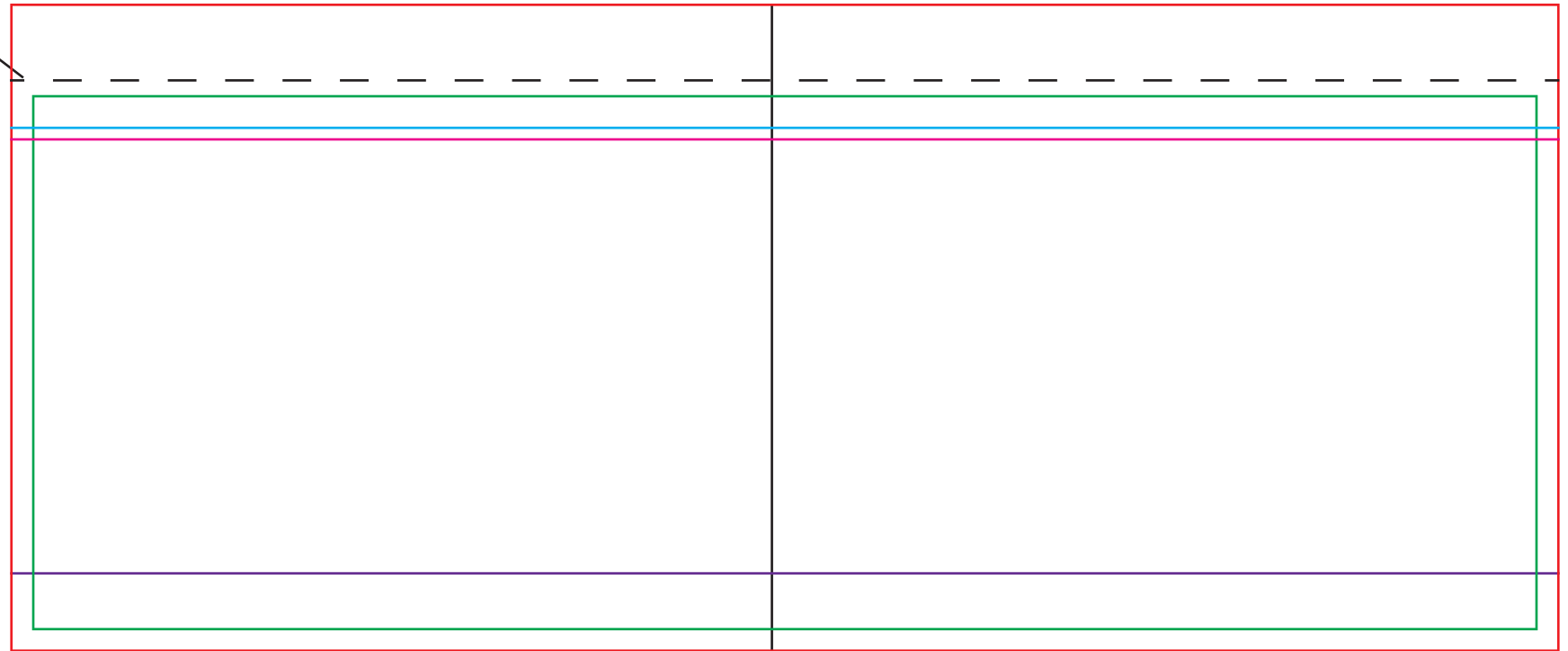
White Plate: All art below the purple line must have solid white behind it.

Total Print Area: The red outline. For art with a full bleed, art must extend out to the red outline. 8.97x3.75

Common art layouts.



This is the cup rim line.



Center Line