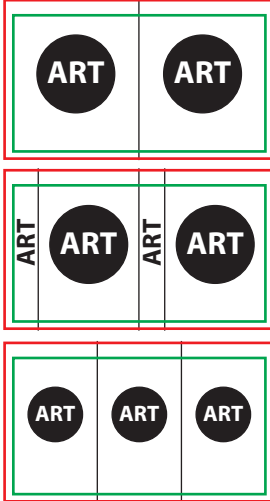


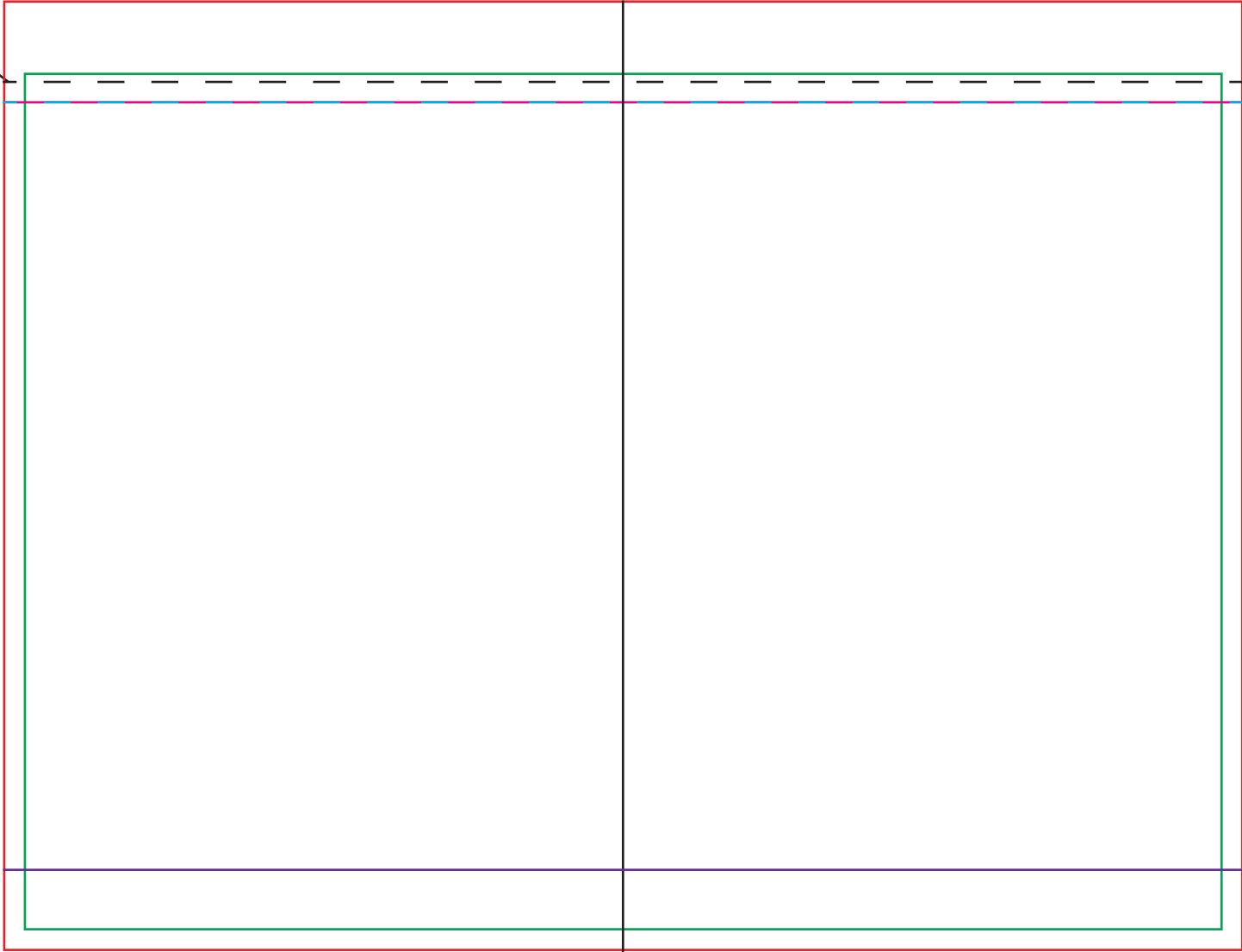
Art Template for Clear 21 Vissually Stunning Plastic cup.

Live Area: ALL critical text or images must be within the green outline. 7.25x5.18
- If there is a lid on the cup;
P2 Lid: Keep critical text or images below the cyan line.
All Other Lids: Keep critical text or images below the magenta line.
White Plate: All art below the purple line must have solid white behind it.
Total Print Area: The red outline. For art with a full bleed, art must extend out to the red outline. 7.5x5.75

Common art layouts.



This is the cup rim line.



Center Line